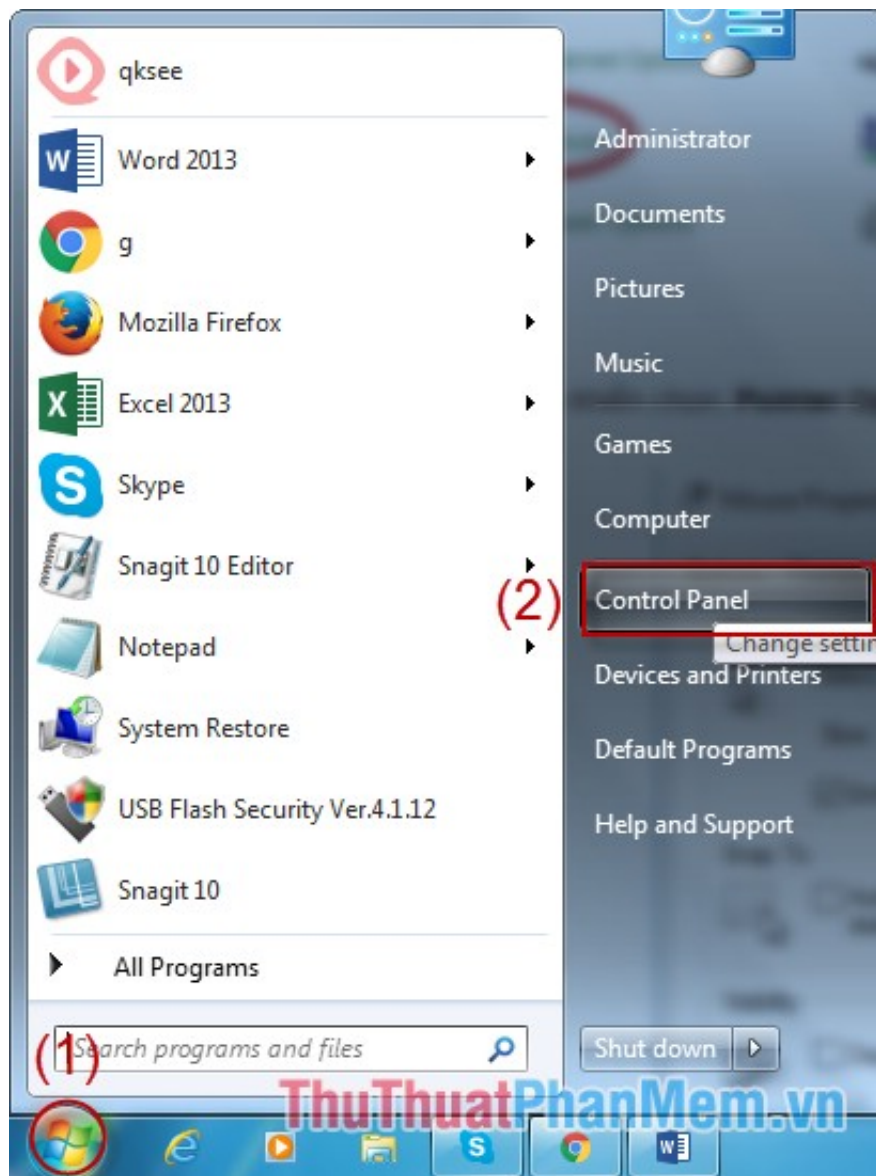


Adjust the speed of the mouse on the computer screen

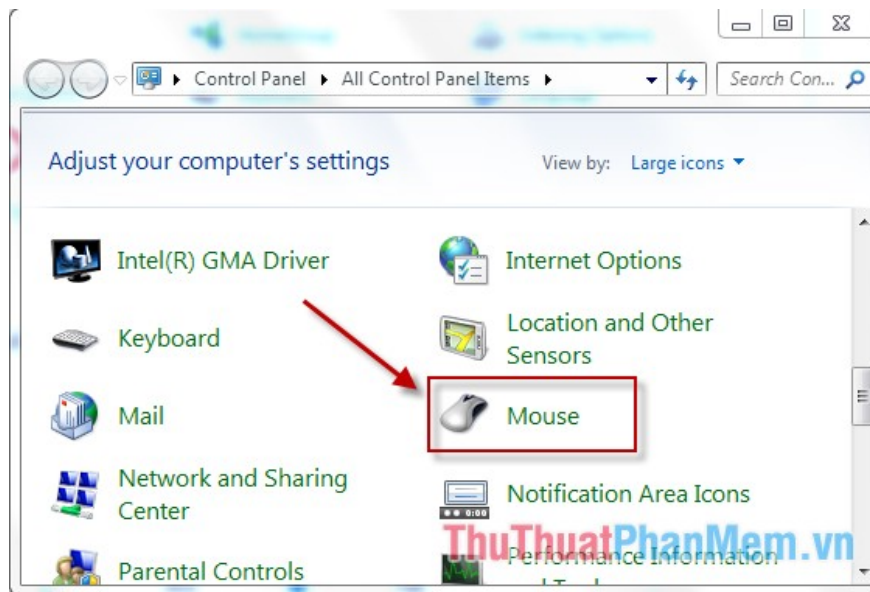
During the process of working with your computer, if you feel the mouse dragging feels too fast or too slow, please adjust the speed accordingly. The following article details instructions on how to adjust the speed of the mouse on the computer screen.

During the process of working with your computer, if you feel the mouse dragging feels too fast or too slow, please adjust the speed accordingly. The following article details instructions on how to adjust the speed of the mouse on the computer screen.

Step 1: Click your mouse on **Start -> Control Panel** .



Step 2: A dialog box appears and select **Mouse** .

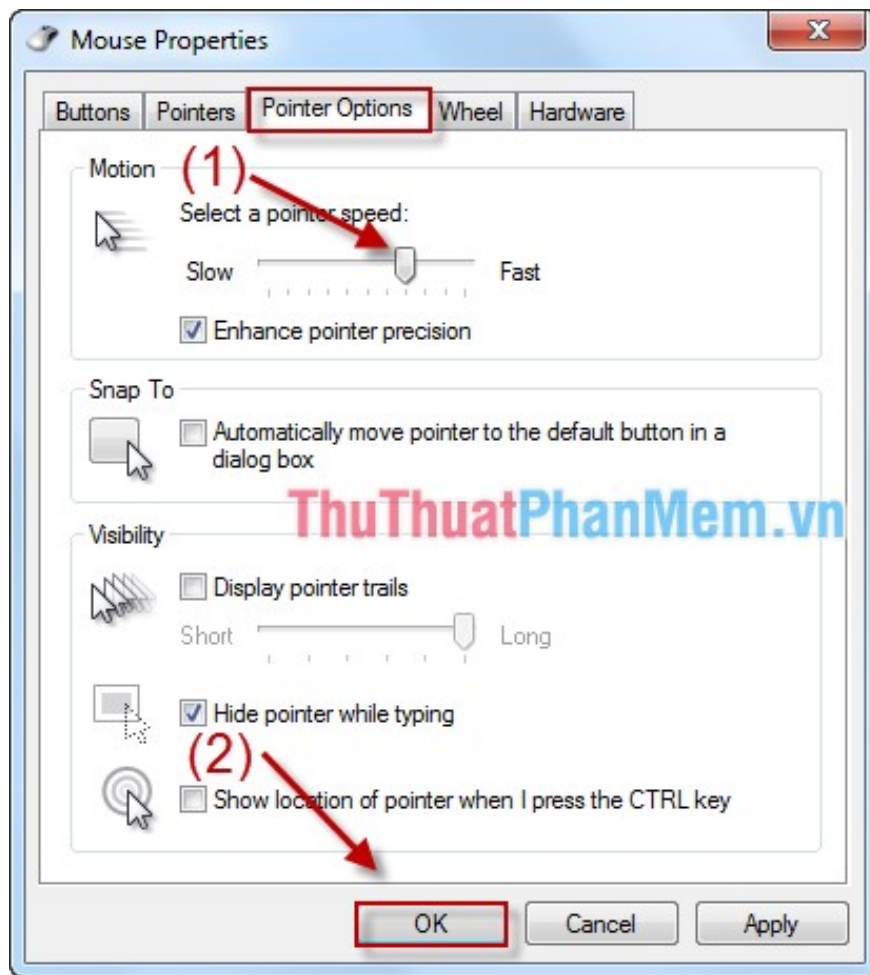


Step 3: A dialog box appears, select the **Pointer Options** tab -> move the arrow to adjust the drag:

- **Fast:** Fast speed.

- **Slow:** Slow speed.

If you want faster mouseover speed move to **Fast** side , if you want slow move to **Slow** side . Finally, click **OK** to finish.



Above is how to adjust the speed of the mouse for the computer. Hopefully with this article, you can adjust the speed of your computer mouse to best suit.

Good luck!

You finished reading the article "**Adjust the speed of the mouse on the computer screen**" edited by the [TipsMake](#) team. We hope this article has provided you with many useful tech tips and tricks. You can search for similar articles on tips and guides. Thank you for reading and for following us regularly.