

# Adjust the screen brightness of your Windows laptop using keyboard shortcuts.

Screen brightness that is too high or too low can affect your eyes and laptop battery life. Below are ways to increase or decrease screen brightness on a Windows laptop, from keyboard shortcuts and system settings to supporting software.

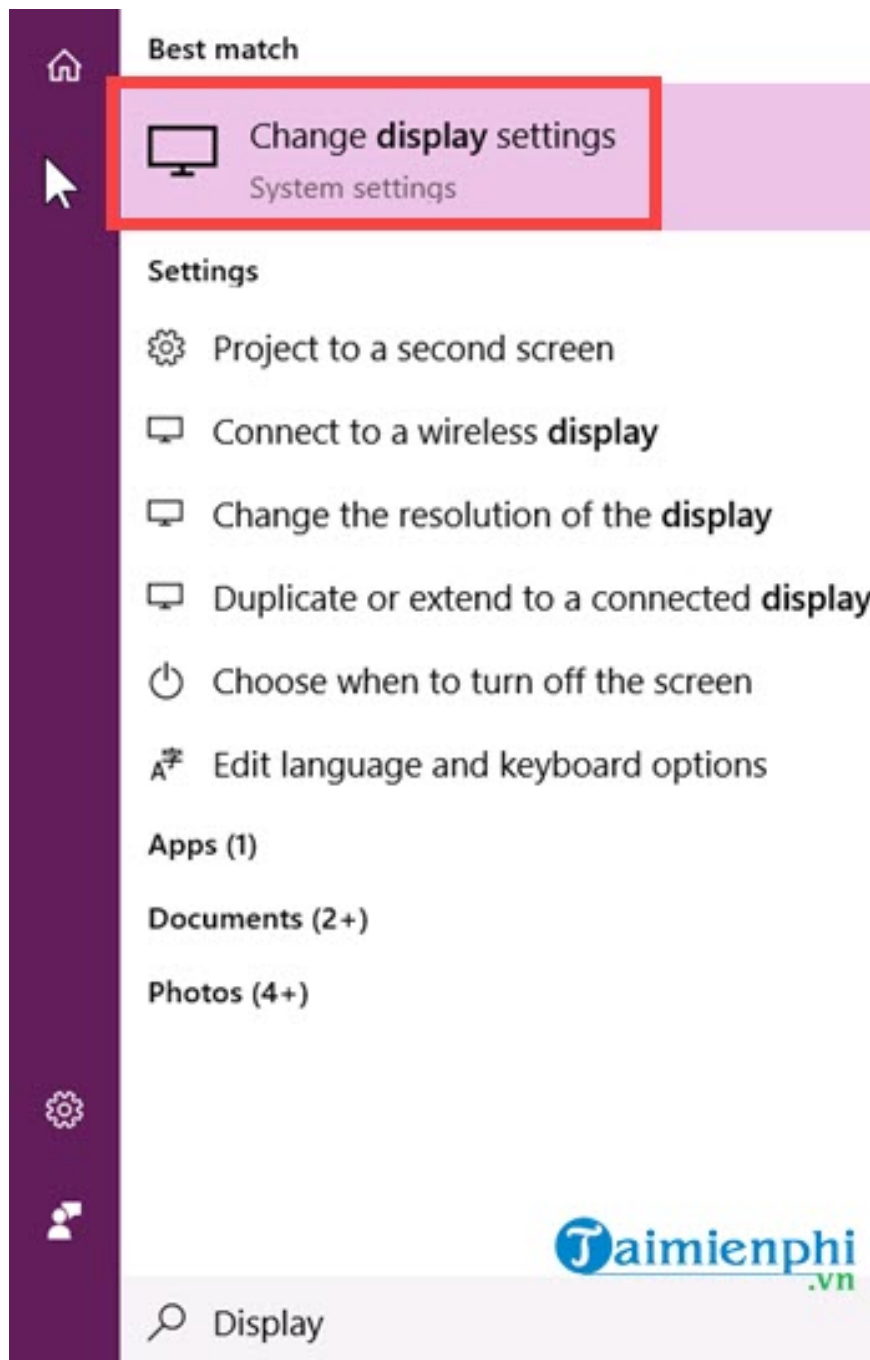
Is your screen too bright and causing eye strain, or too dark and difficult to see? You can easily adjust the brightness of your Windows laptop screen in various ways to suit your needs.

## **Table of Contents:**

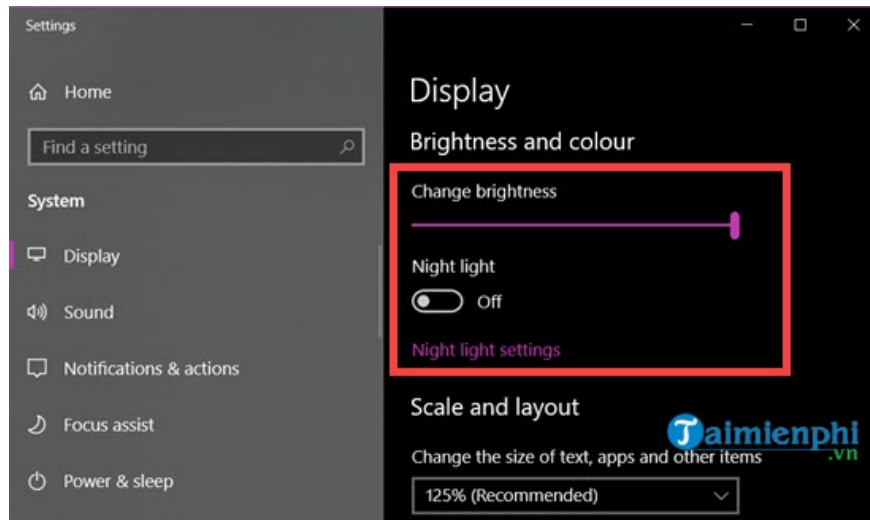
- 1. On Windows**
- 2. On Laptop**

## **1. Adjust screen brightness on Windows**

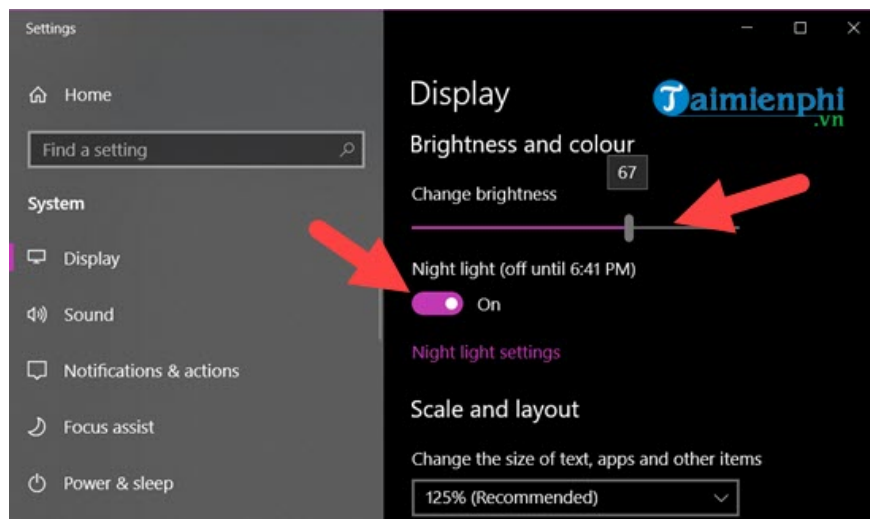
*Step 1:* Open the **Start Menu** , type "**Display,**" and access the "**Change Display Settings** " option , as shown in the image below.



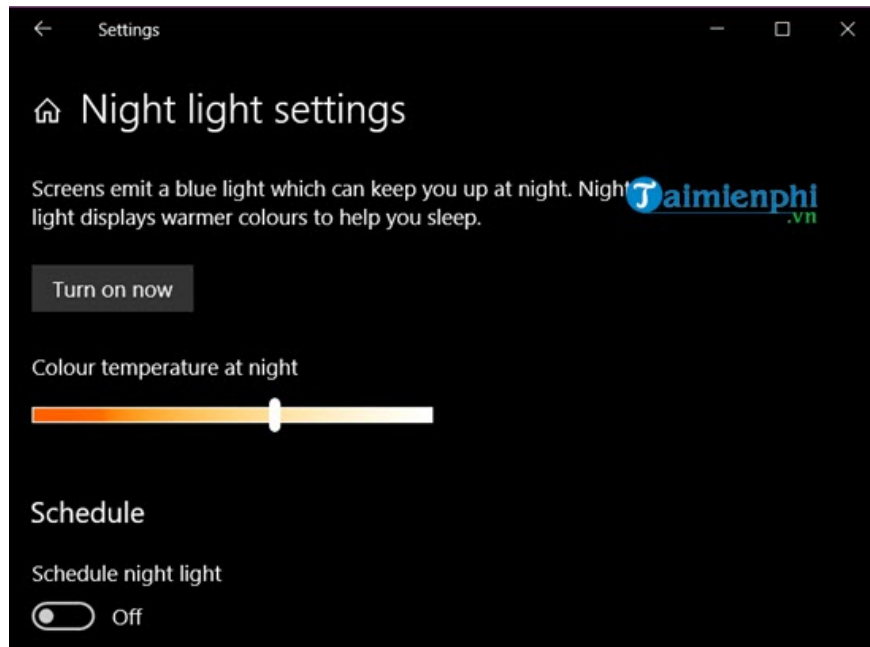
Step 2: You will see " **Change brightness**" > "**Night Light** ," which displays the eye protection mode.



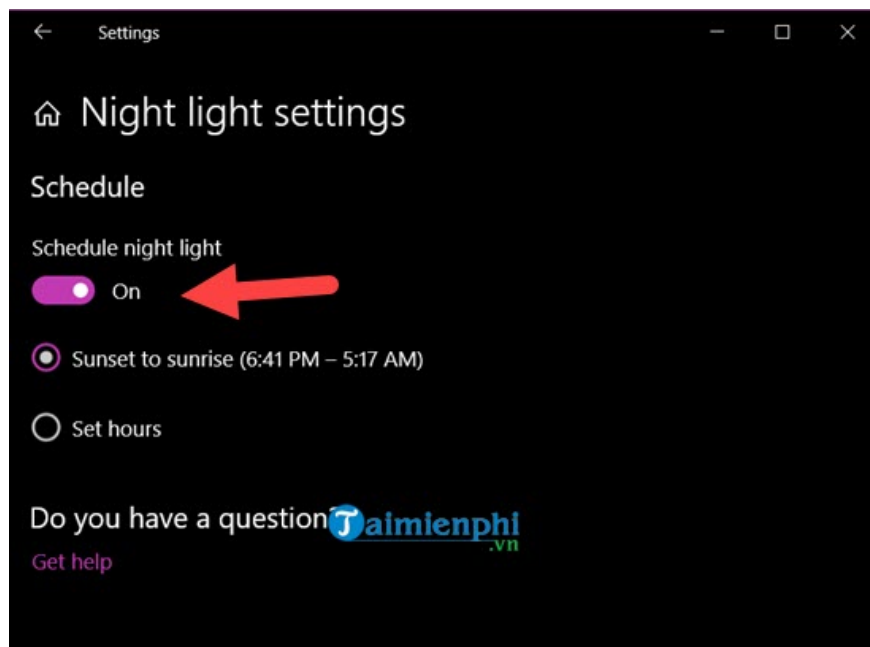
*Step 3:* Screen brightness can be **increased or decreased from 1 to 100**. The colors in the image may not change. You can also activate Night Light and configure it in the "Night Light settings" section.



*Step 4:* In **Night Light Settings** , you can activate this eye protection mode and adjust the color from **yellow to white** (default) as desired, as long as you can still work with the screen.



*Step 5:* Below, you can activate "Schedule" to proactively schedule the Night Light mode. The default Windows 10 time is from **6:41 PM to 5:17 AM** the next morning.



## 2. Adjusting the brightness on a laptop

**Note:** This guide, available for free download, is based on HP, Dell, Asus, Lenovo, and Vaio laptops.

HP typically designates the key combination **Fn + F2/F3** to increase or decrease laptop screen brightness; however, some other manufacturers designate the key combination as **Fn + F4/F5** or **Fn + F5/F6**.



### ***Method 1: Using Mobility Center***

On Windows 7, 8, 8.1, and 10, press the **Windows + X** key combination and click on **Mobility Center**.

Programs and Features

Mobility Center

Power Options

Event Viewer

System

Device Manager

Network Connections

Disk Management

Computer Management

Command Prompt

Command Prompt (Admin)

---

Task Manager

Control Panel

File Explorer

Search

Run

---

Shut down or sign out

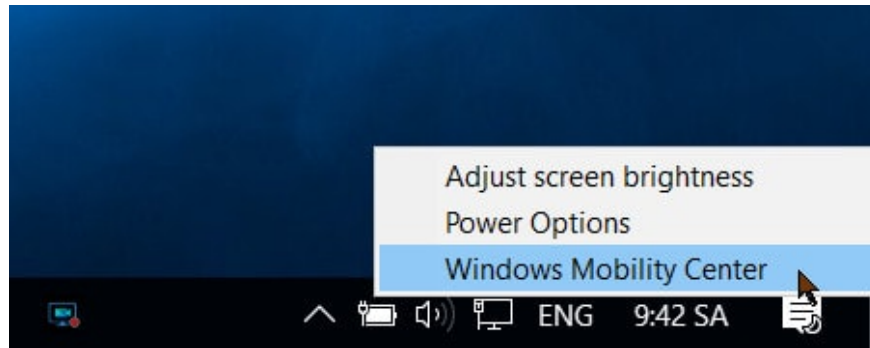


Desktop



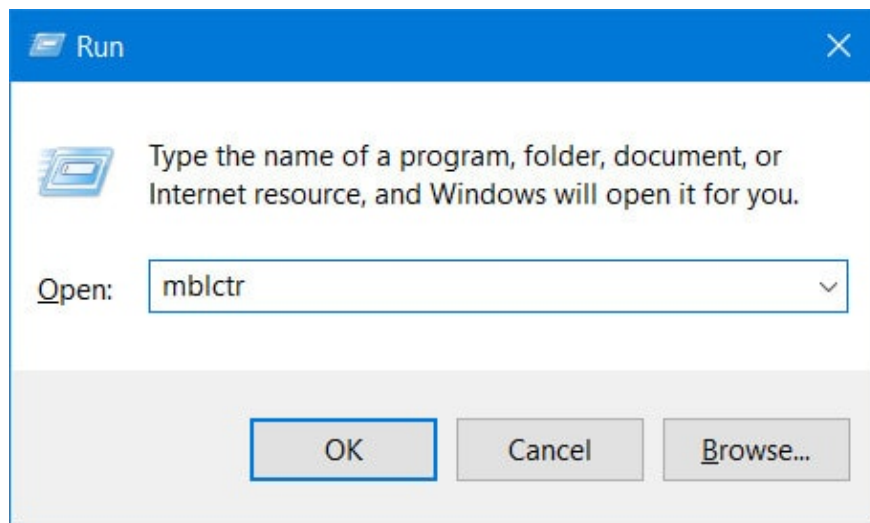
## *Method 2 : Using Windows Mobility Center*

In the system tray, find the battery icon, right-click on it, and then select **Windows Mobility Center**.

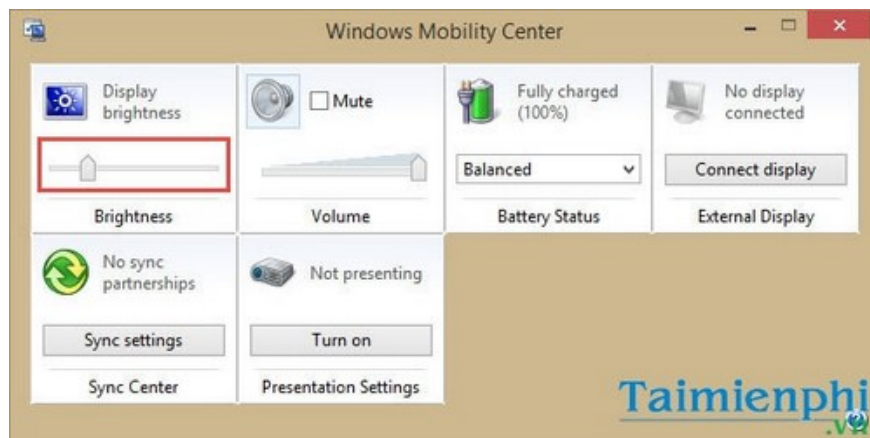


## *Method 3 : Using commands and keyboard shortcuts*

Use the DOS command line by pressing **Windows + R** , then run the **mblctr** command.



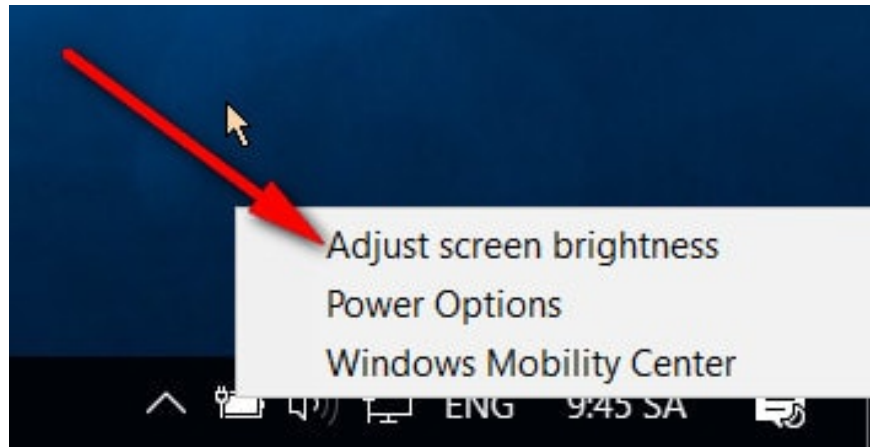
Simply drag and drop the **Display brightness** slider to increase or decrease your laptop's brightness as desired.



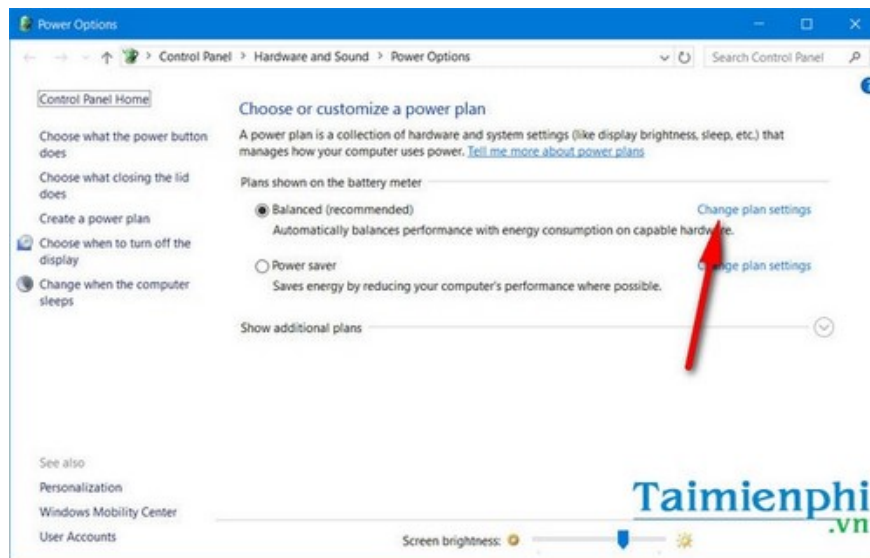
#### ***Method 4: Adjust screen brightness***

This way, we can customize the screen brightness when the laptop is charging and when it's not charging.

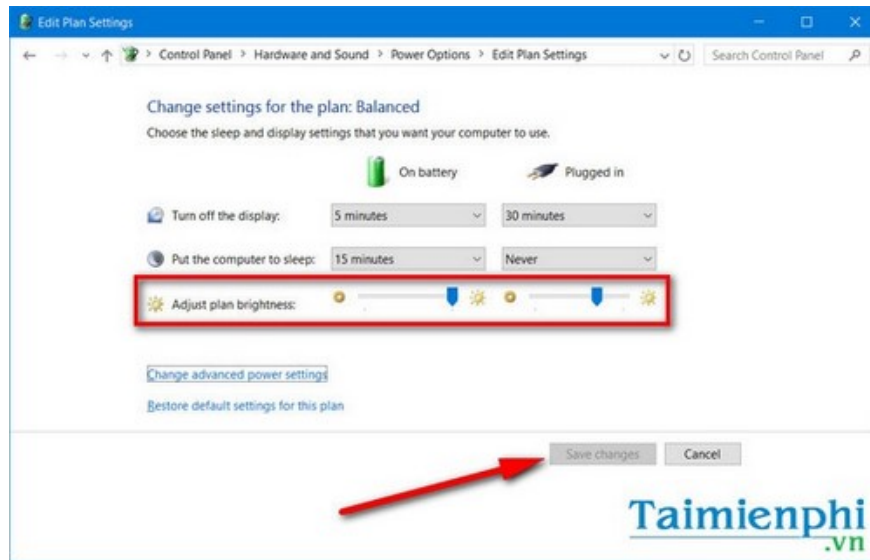
Right-click on the battery icon in the system tray and select " **Adjust screen brightness**".



Right-click on the battery icon and select **Adjust screen brightness**.



Select **Change plan settings** to change battery settings and adjust brightness.



Next, select **Change plan settings** and adjust the brightness in both On battery and Plugged In modes under **Adjust plan brightness** . Press **Save changes** to save all settings.

### ***Method 5: Using the Notification function***

This method of adjusting screen brightness **only applies to Windows 10**.

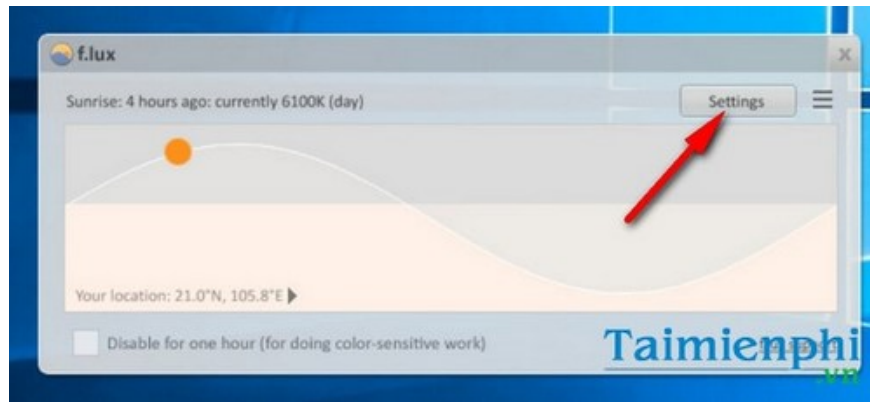


Tap the **Action Center** icon in the bottom right corner of the screen and then tap the sun icon to adjust the screen brightness.

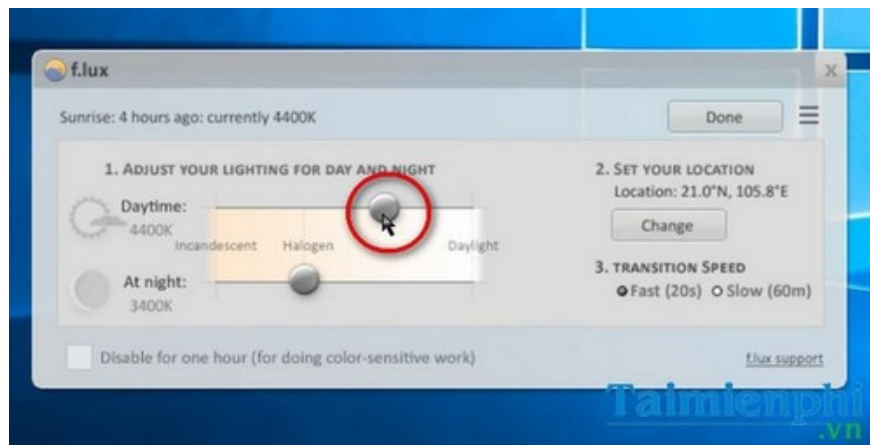
### ***Method 6: Using F.lux software***

After downloading and installing F.lux on their computer, users can easily adjust the brightness in real time throughout the day, or adjust it directly to their liking.

Access F.lux **Settings** by opening the app, then double-clicking the icon located in the system tray.



In the main F.lux interface, you can drag and drop the slider icon in **Daylight** to adjust the screen brightness of your laptop or computer according to your needs.



So, you've now reviewed the guide on adjusting the brightness of your Windows computer or laptop. Additionally, for more detail, TipsMake also guides you on how to save battery power on Windows 7 laptops and **how to adjust screen brightness on Windows 11 computers** to maximize your energy savings.

If you are unable to adjust the brightness, please refer to the instructions on how to fix the problem of not being able to adjust laptop screen brightness here.

You finished reading the article "**Adjust the screen brightness of your Windows laptop using keyboard shortcuts.**" edited by the [TipsMake](#) team. We hope this article has provided you with many useful tech tips and tricks. You can search for similar articles on tips and guides. Thank you for reading and for following us regularly.