

# Adjust screen resolution on Windows 10/8/7

On Windows 7 and Windows 8, screen resolution management can be said to be quite simple. By default on Windows 10/8/7, you can choose to display display resolution, refresh rate (screen refresh rate) and color according to your screen.

Screen resolution - Display Resolution, is the number of pixels displayed on the screen. Setting the screen resolution is extremely important, enabling you to display sharper content.

On Windows 7 and Windows 8, screen resolution management can be said to be quite simple. By default on Windows 10/8/7, you can choose to display display resolution, refresh rate (screen refresh rate) and color according to your screen.

If you use a separate graphics card driver, installed on your computer, you must install the latest and most suitable driver version, in addition your system must also optimize that graphics card driver. Setting up the display depends on the monitor type, setting up the LCD monitor and CRT monitor is different.

LCD screens, also known as flat screens, are widely used today. Compared to CRT monitors, LCD screens are much thinner and much lighter. Laptops also use flat screens.

For LCD monitors and CRT monitors, the DPI (dots per inch) is an issue, which will improve resolution and image clarity. The resolution you use depends on the supported screen resolution. If the resolution is high, such as 1900 x 1200 pixels, the items will show a sharper and smaller resolution, so you can save space on the screen.

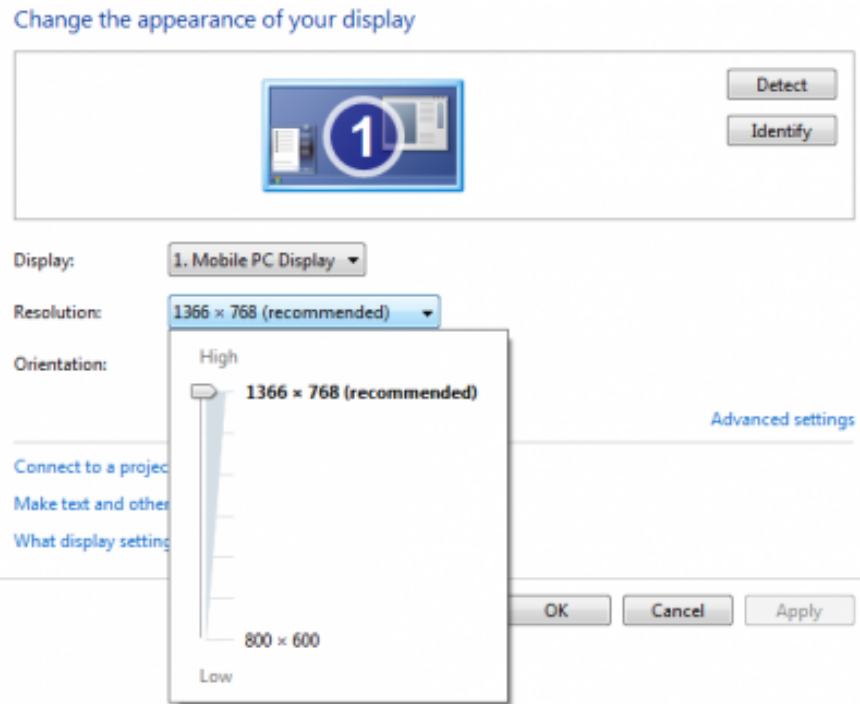
If the resolution is low, assuming 800 x 600 pixels, the items displayed on the screen will be less and the space size on the screen will be less.

Windows allows you to increase or decrease the size of the text and other items on the screen while optimizing the size and resolution of the item on the screen.

## 1. Set the LCD screen resolution

If using an LCD monitor you can check the screen resolution. And the advice for you is to use the original screen resolution.

1. Right-click the Desktop screen, and then select **Screen Resolution** .
2. Click on the dropdown menu next to Resolution. Select the resolution attached to the option (**recommended**) . That is the original resolution of the LCD screen - usually the highest resolution that the screen can support.



Manufacturers or retailers can also tell you the original resolution of the LCD screen. (CRT monitor does not have native resolution).

LCD monitors using native resolution often display text, the text content is better than CRT screens. The LCD monitor has a card that supports a resolution lower than the original resolution, but when you use a low resolution, text and text are not clear and images may be small, .

## 2. Resolution based on LCD screen size

Screen size Screen resolution (pixel unit) 19-inch LCD screen 1280 × 1024 20-inch LCD monitor 1600 × 1200

20-inch widescreen LCD and 22-inch 1680 × 1050

Wide screen 24-inch LCD

1920 × 1200

Laptop screen size Screen resolution (pixel unit) 13 to 15-inch laptop screen 1400 × 1050 Wide screen laptop 13 to 15-inch 1280 × 800 Wide-screen 17-inch laptop 1680 × 1050

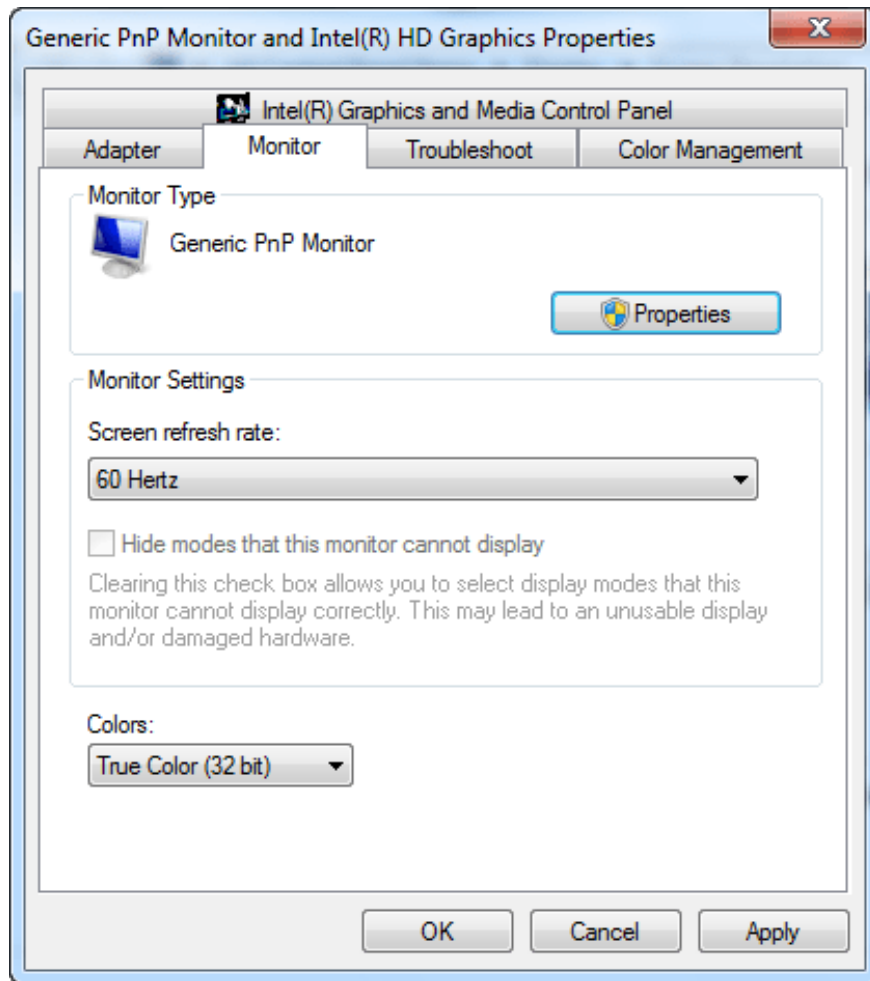
## 3. Adjust the color of the LCD screen

To display the best color on the LCD screen, make sure you set the color to 32-bit. This is how to adjust the color depth, color values ??can be assigned to one pixel of an image. Color depth can range from 1 bit (black and white) to 32 bits (more than 1.6 million colors).

1. Right-click any space on the Desktop screen, then select **Screen Resolution** .

2. Next click **Advanced settings** , then click the **Monitor** tab .

3. In the Colors section, select **True Color (32 bit)** then click OK.



#### 4. Set CRT screen resolution

With CRT monitors, it is important to change the high screen resolution using a 32-bit color screen resolution and a minimum refresh rate of 72-Hertz.

#### 5. Resolution based on CRT screen size

Screen size Screen resolution (pixel unit) CRT screen 15-inch 1024 × 768 CRT monitor from 17 to 19-inch 1280 × 1024 20-inch CRT monitor and CRT widescreen 1600 × 1200

#### 6. Set colors for CRT screens

Windows colors and themes work best when you set the screen to 32-bit color. You can also set the screen to 24-bit color, but you cannot see all visual effects. If the screen setting is 16-bit color, the image will not be clear, low resolution.

1. Right-click any space on the Desktop screen, select **Screen Resolution** .
2. Next click on **Advanced Settings** , then click the **Monitor** tab .

3. In the **Colors** section, select **True Color (32-bit)** , then click **OK**. If you cannot select 32-bit color, you should check the screen resolution as soon as possible, then proceed with the reset test.

**Refer to some of the following articles:**

1. Instructions to turn off ads on the Screen Lock screen Windows 10
1. Instructions to adjust screen brightness of Windows 7 computer
1. How to disable Lock Screen lock screen on Windows 8, 10

**Good luck!**

You finished reading the article "**Adjust screen resolution on Windows 10/8/7**" edited by the [TipsMake](#) team. We hope this article has provided you with many useful tech tips and tricks. You can search for similar articles on tips and guides. Thank you for reading and for following us regularly.