

Add-ins in Excel: How to install and remove

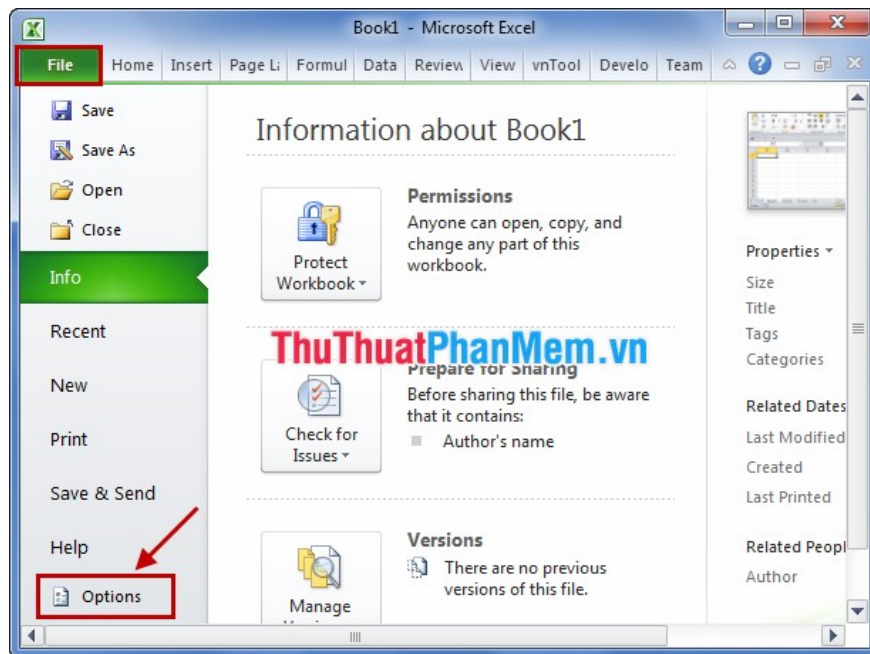
The features in Excel are many but not enough, with complex functions or features in Excel without you, you can install Add-ins to manipulate and process data more easily. When not needed, you can remove Add-in from Excel.

The features in Excel are many but not enough, with complex functions or features in Excel without you, you can install Add-ins to manipulate and process data more easily. When not needed, you can remove Add-in from Excel.

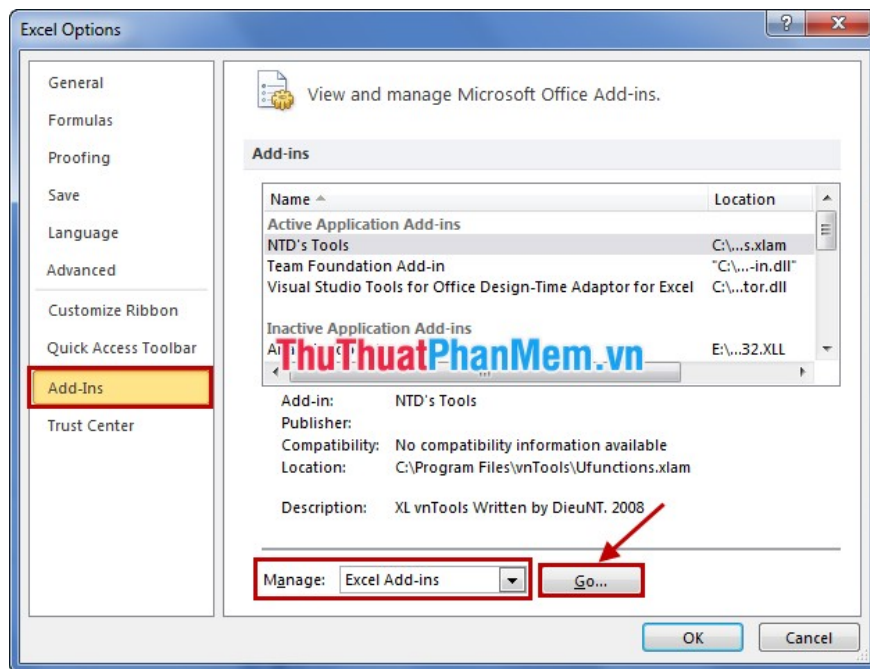
The following article shows you how to install and remove Add-ins in Excel 2010.

Install the Add-in

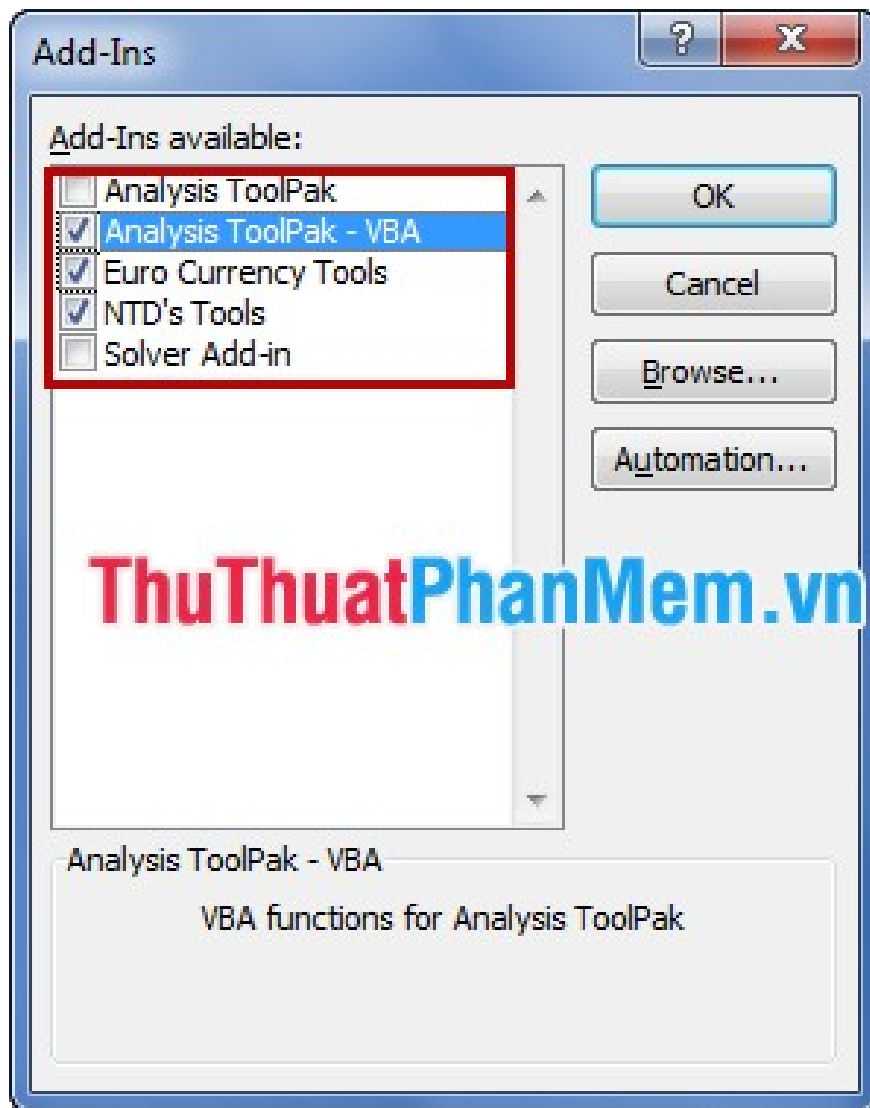
Step 1: Open Excel and select **File -> Options** to open **Excel Options** .



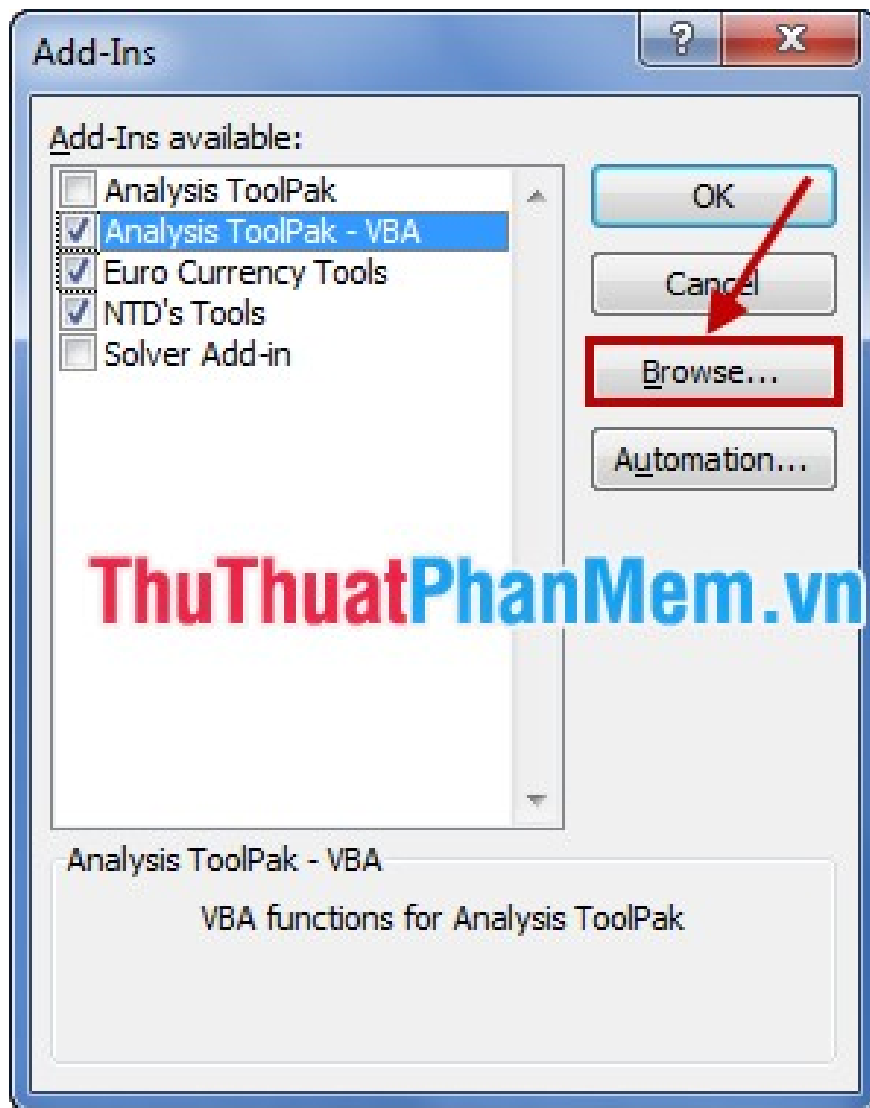
Step 2: In Excel Options, select **Add-Ins** in the left menu. In **Add-Ins**, go to **Manage**, select **Excel Add-ins** , and then click **Go** .



Step 3: In the dialog box **Add-Ins** you can select the default Excel **Add-Ins** by checking the box before the **Add-Ins** you want to add.



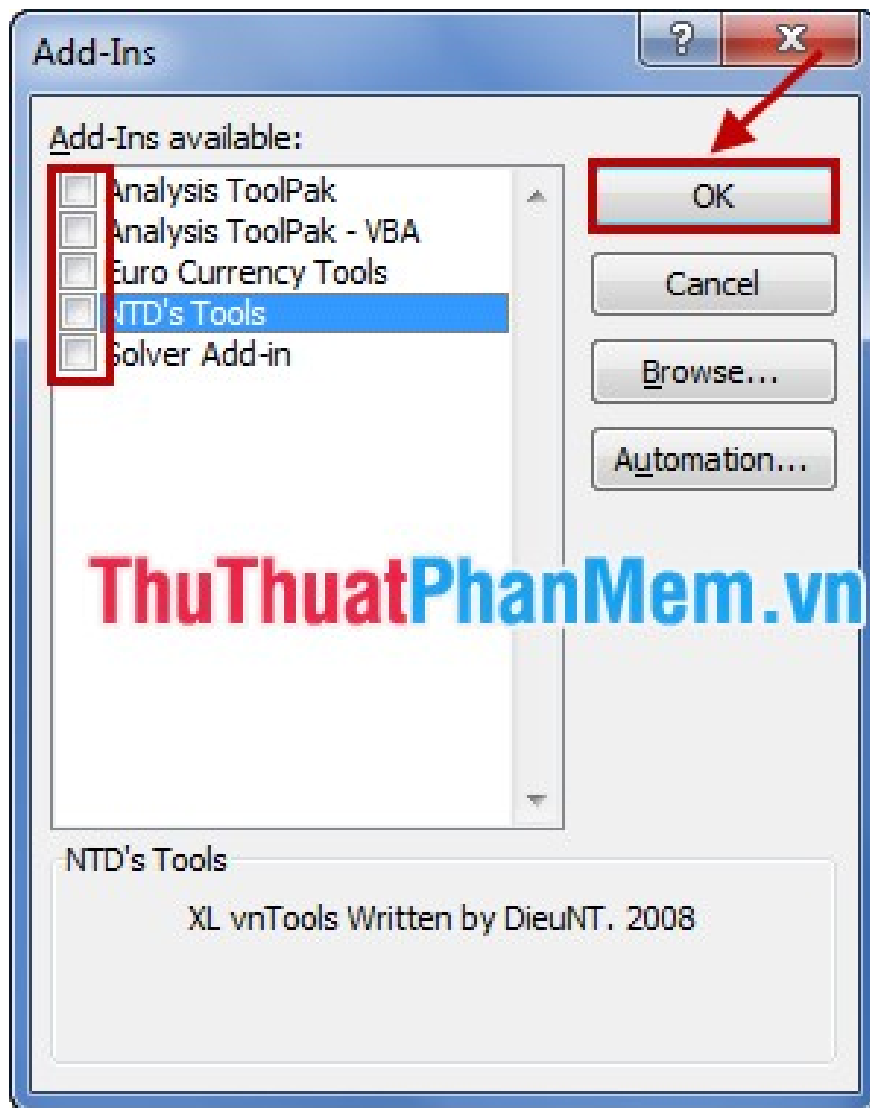
In addition, you can download other **Add-ins** to your computer and click **Browse** to select the **Add-in** .



Click **OK** to install the Add-in in Excel, then you restart Excel.

Uninstall the Add-in

Follow the same steps above to open the Add-Ins dialog box. In the dialog box Add-Ins, if you want to remove any Add-in you deselect in the box before that Add-in. Then click **OK** to remove.



Close all Excel files and restart.

The article has shown you how to install and remove Add-in in Excel, you can easily use advanced features that Excel does not yet support. Therefore, the processing of data in Excel will be faster and more efficient. Good luck!

You finished reading the article "**Add-ins in Excel: How to install and remove**" edited by the [TipsMake](#) team. We hope this article has provided you with many useful tech tips and tricks. You can search for similar articles on tips and guides. Thank you for reading and for following us regularly.