

Add or change OEM support information on Windows 10

Windows 10 allows users to add, edit or remove OEM support information. This article will show you how to quickly edit OEM information.

When buying a new computer, you can see OEM support information. This information includes computer model, manufacturer logo, support URL and other details. On Windows 10 you can easily see this OEM support information on the Settings page and in the System Properties window.

Windows 10 allows users to add, edit or remove OEM support information. These are special information that hardware vendors can complement by displaying their logo, name, computer model, support phone number, URL and time zone support.

Before proceeding with the steps, you must first see what information you can edit, add or remove on OEM support information.

- Logo image.
- Manufacturers Name.
- Model name.
- Support for time zones.
- Support URL.
- Support phone number.

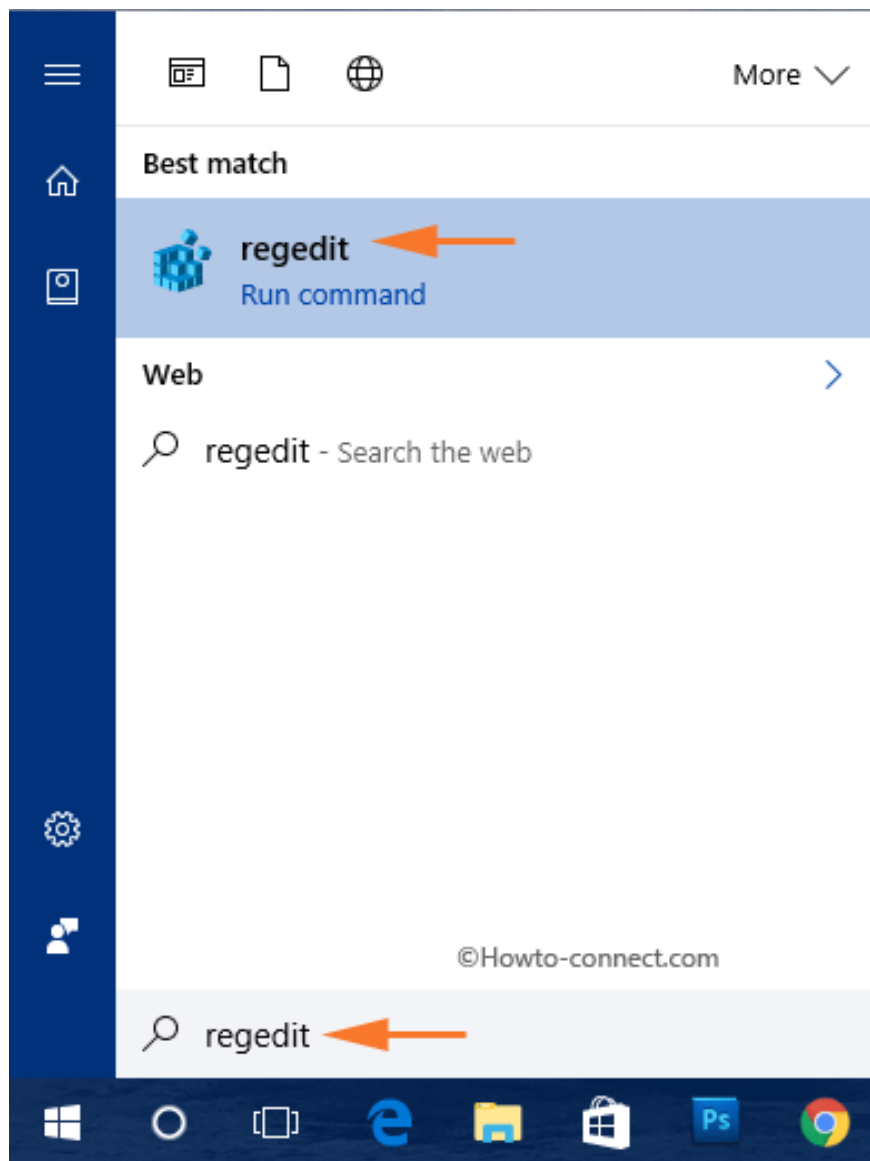
Edit OEM support information on Windows 10

Step 1:

First, select the **Windows** icon, then enter **regedit** there. This is to quickly display Cortana and similar commands as Best match.

Step 2:

On the list of search results, click **regedit (Run command)** .



Step 3:

If the UAC window appears, click **Yes** .

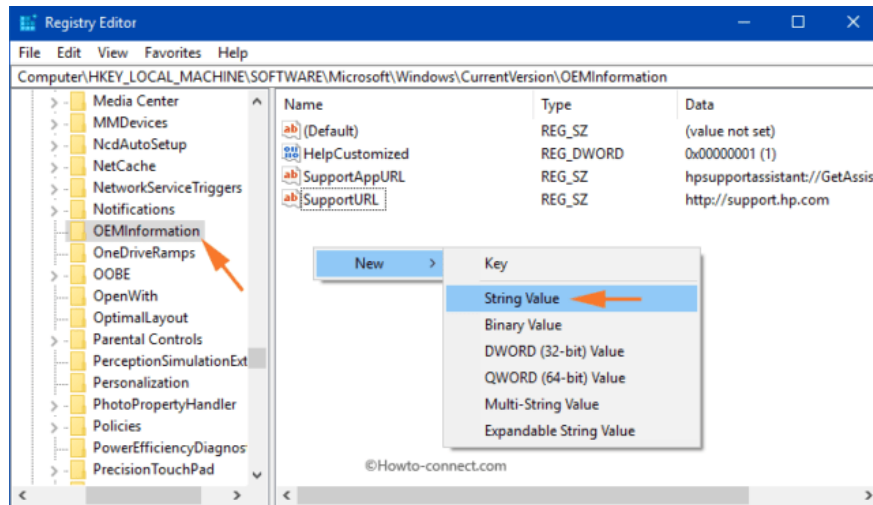
Step 4:

On the Registry Editor window, navigate to the key:

HKEY_LOCAL_MACHINE\SOFTWARE\Microsoft\Windows\CurrentVersion\OEMInformation

Step 5:

At the OEMInformation key, in the right pane, right-click any space, then select **New => String Value** .



Step 6:

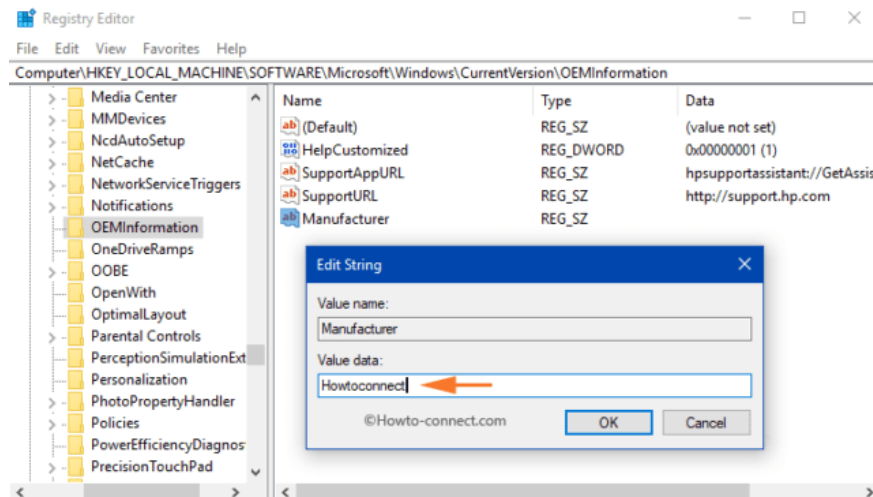
Follow the steps to create a String value for each support information.

Step 7:

Next, double-click on **String value** and enter the value in the Value data box. Below is the Value data value for each support information:

Manufacturer

Assign any name you want to see in the **Manufacturer** section in the Value data box. Then click **OK**.



Model

Enter your computer model in the Value data box.

SupportHours (support time zone)

Assign an hour frame to the **Value data** box that you want to display with SupportHours.

SupportPhone (support phone number)

Enter a phone number in the Value data box.

Note:

Both SupportHours and SupportPhone limit 256 characters only.

SupportUrl

Enter the URL in the Value data box and it's an OEM-supported website.

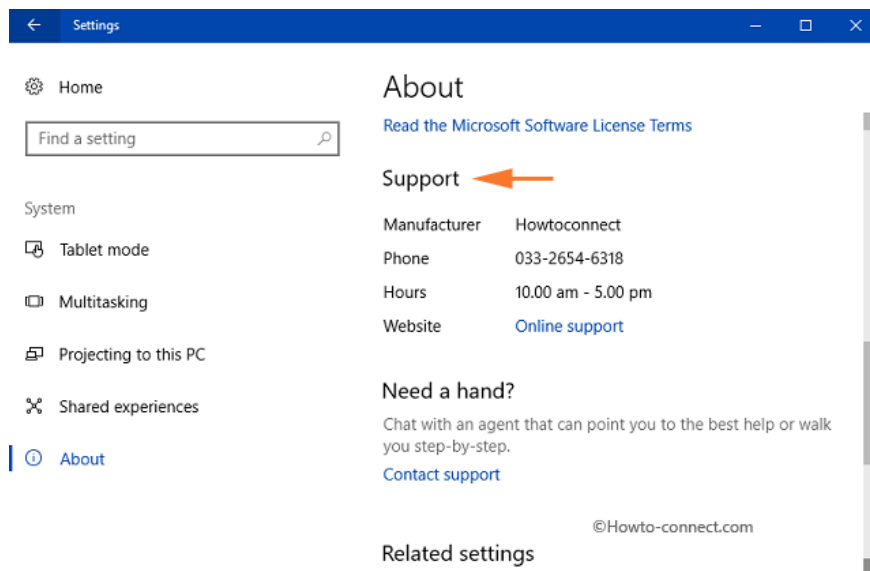
Logo

You have to make a few requests to edit the logo that supports OEM.

1. Images cannot be larger than 120 x 120 size.
2. Color depth (color depth) - 32 bit.
3. Image file must be in **.BMP** format.

Therefore in the Value data frame, enter the full image file path. Select **OK** to make the edits.

Next, open **Settings** => **System** => **About** and in the right pane, find **Support** . In the Support section, all the OEM support information that you edit will be displayed there.



Also open **Control Panel** , then select **System** and the OEM information you edit will be displayed there.

Refer to some of the following articles:

1. Here's how to create a Virtual Hard Disk on Windows 10
1. How to create Restore Point on Windows 10 with just 1 double click
1. Summary of some ways to fix Windows 10 crash, BSOD error and restart error

Good luck!

You finished reading the article "**Add or change OEM support information on Windows 10**" edited by the [TipsMake](#) team. We hope this article has provided you with many useful tech tips and tricks. You can search for similar articles on tips and guides. Thank you for reading and for following us regularly.