

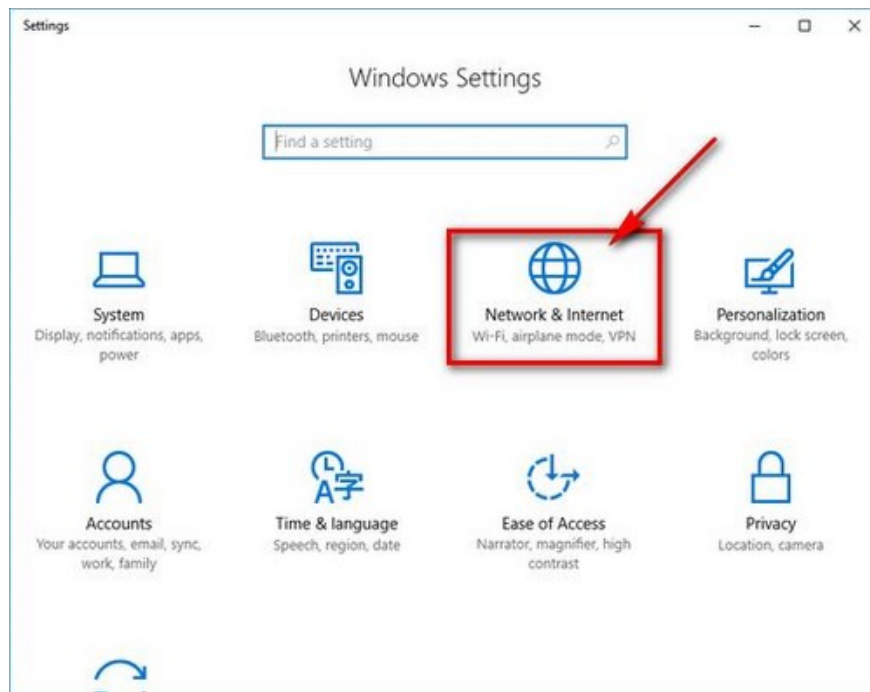
Enable 'Metered Connection' control on Windows 10

If you use a 3G network or need to monitor your daily data usage for each internet session on your computer, in the latest versions of Windows 10 and later, you can enable or disable Metered Connection to help you control data and minimize download usage.

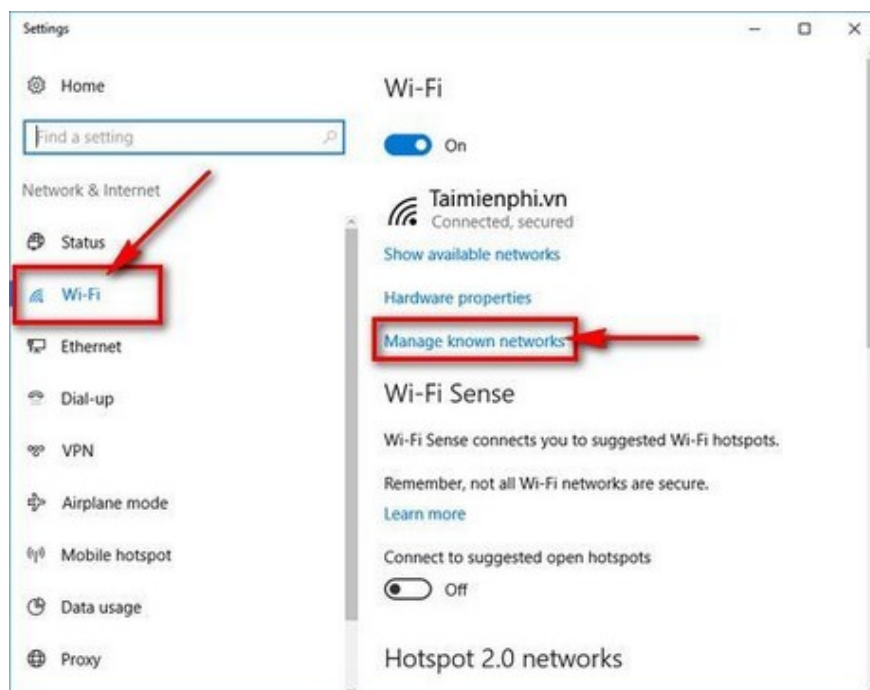
Metered Connection is a feature that 'meters' the amount of data used each time you use your computer. Using Metered Connection makes it easy to control and limit network access, especially for individuals using 3G or subscription networks. Metered Connection can save network data by only downloading prioritized updates, disabling Store updates, limiting synchronization, and preventing the downloading of dynamic tiles on your computer. So, how do you turn Metered Connection on or off? Follow the instructions below from TipsMake.

INSTRUCTIONS FOR TURNING METERED CONNECTION ON AND OFF

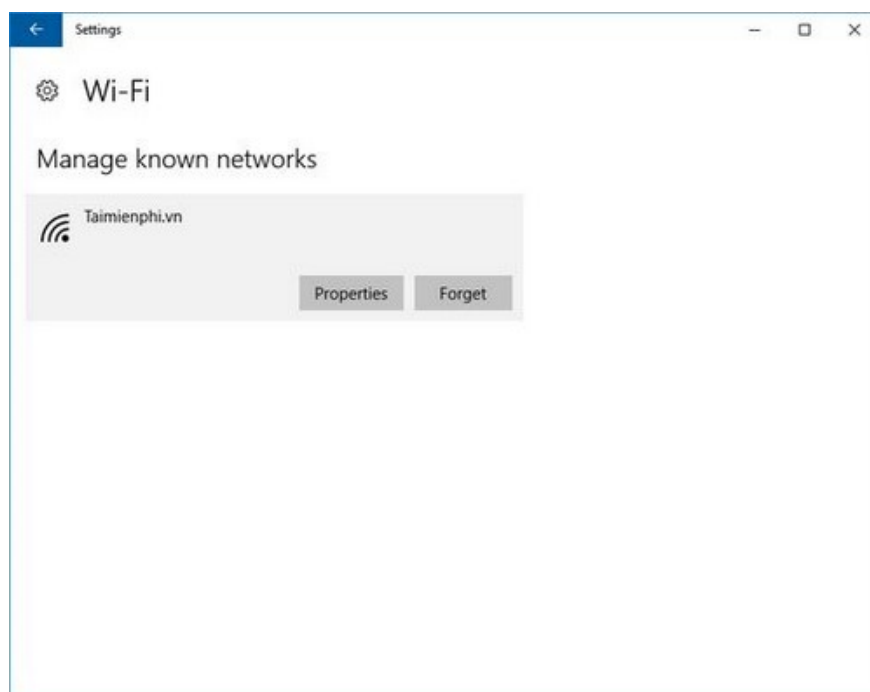
Step 1: Press the **Windows + I** key combination to open the **Windows Settings** window and select **Network & Internet** .



Step 2: In the left column, select **Wi-Fi** to enable or disable Metered Connection for your wireless network. Then select **Manage known networks** .



Step 3: Here you will see a list of Wi-Fi networks that have been saved on your computer when you connect to them. Select a Wi-Fi network that you want to enable or disable Metered Connection, then select **Properties** .

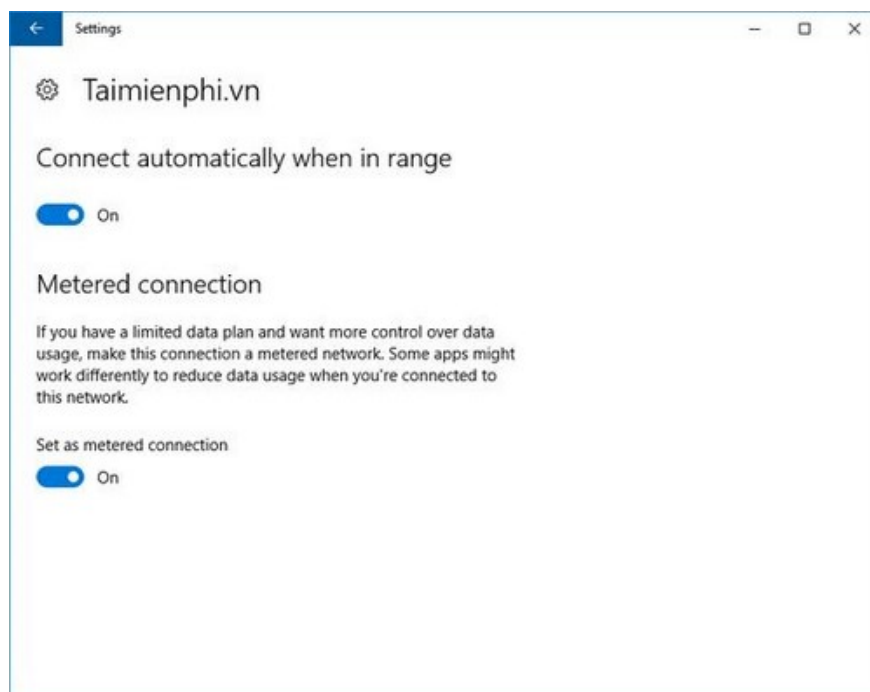


Step 4: Here you will see the following line displayed:

Connect automatically when in range : Automatically connects when within coverage area.

Metered connection : Flow control

Click the toggle switch icon below the "Set as metered connection" line to turn Metered Connection on or off.



So you have successfully enabled or disabled metered connection. If you reset your network connection, all metered connection settings will revert to their original state. Using the same method, you can also enable or disable metered connection for other Wi-Fi networks. For wired networks, the metered connection function will be updated in Windows Creators Update with similar settings as for wireless networks. In addition to enabling data usage control on your computer, you can also display network speed on your computer screen using **NetSpeedMonitor** and other tools.

Additionally, after using Windows 10 for a while, your computer will become slower. At this point, you need to reset your Windows 10. Resetting Windows 10 is quite simple and not as difficult as many people think; you can do it yourself.

You finished reading the article "**Enable 'Metered Connection' control on Windows 10**" edited by the [TipsMake](#) team. We hope this article has provided you with many useful tech tips and tricks. You can search for similar articles on tips and guides. Thank you for reading and for following us regularly.