

# Accessing Printer error when opening Excel file - Summary of effective solutions

Accessing Printer error when opening Excel file makes you 'sweat' because you don't know how to fix it?

*Accessing Printer error when opening Excel file makes you 'sweat' because you don't know how to fix it? TipsMake has compiled solutions shared by many other users in today's article.*

Microsoft Excel – A familiar and widely used spreadsheet tool today. Certainly the importance of Excel in work cannot be denied, especially for office workers. However, similar to other software, Excel sometimes has some problems that hinder the user experience.

Among the countless errors that occur, **Accessing Printer errors when opening Excel files** are not rare. However, this is a somewhat difficult situation to determine the cause and have a thorough solution. However, don't worry too much, because **TipsMake** has researched and has some measures that can help you.





## **What is the Accessing Printer error when opening an Excel file? Why does it happen?**

To 'remove the bell, you need to find someone to tie the bell', the same goes for errors that occur while working with Excel. Only when the specific condition and cause are known. We have the most effective way to solve it.

### **Details about Accessing printer error when opening Excel**

**Many users have complained that when opening an Excel document, the loading screen has a flashing ' Accessing printer Press ESC to cancel ' message , usually located in the lower left corner, and freezes. Even though I pressed the ESC button according to the instructions, this problem still did not solve.**

Besides, some users have chosen not to print and cancel the print dialog box but also experience very annoying crashes. The response time is very long and even when 'standing still' there is no response.

We regret to inform you that it is unclear where the problem lies in this situation. It may be because the printer driver is missing or outdated. Or the printer you are choosing is having some problem. But don't rule out the Excel file, the Excel software you're using has problems.



Fortunately, although the exact 'culprit' could not be found. However, the admin has also found some useful remedies (which have been applied and successfully fixed by many people). Stay tuned for the next part!

## **Instructions on how to fix Accessing printer error when opening Excel**

There are many different ways shared by those who have encountered the problem and fixed it. Apply to fix this printer error when opening an Excel file.

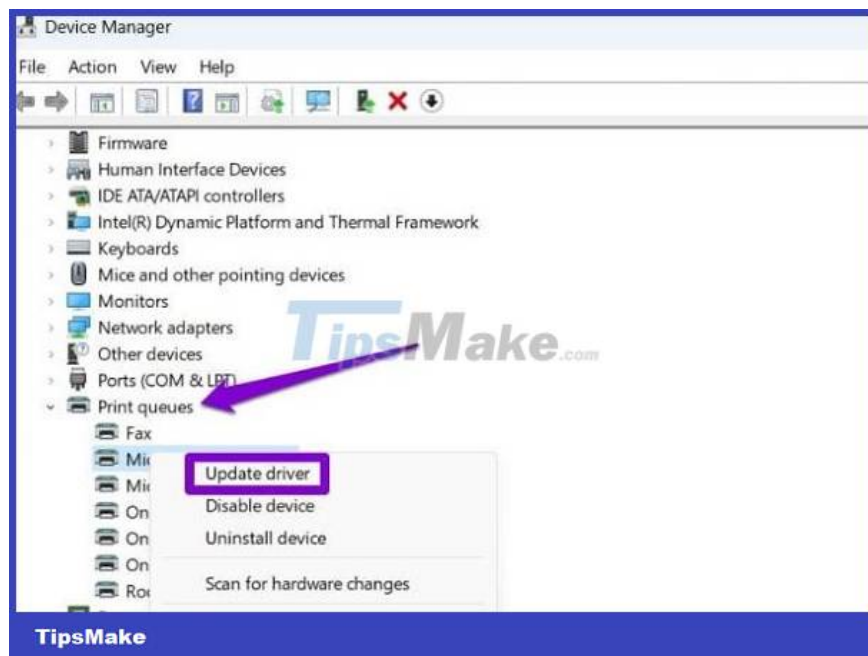
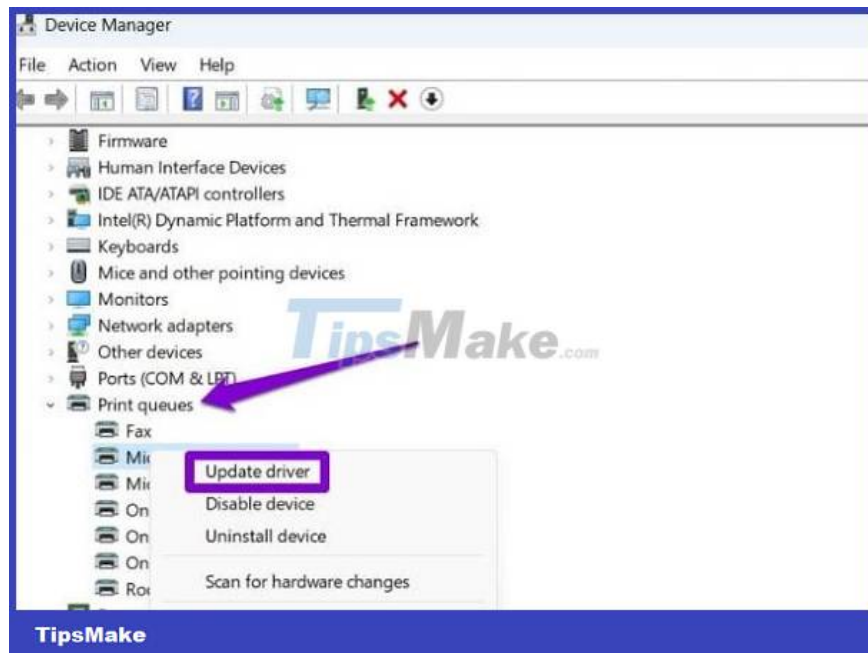
*(The operation is performed on Windows 11, with Windows 10 you do the same but there may be some differences)*

### **1/ Update printer driver**

Although Office applications (including Excel) are designed to work easily with printers. But just a small problem from the printer driver is enough to make Excel not work normally. Therefore, updating the printer driver is the solution you should apply at this time.

1. **Step 1** : Right-click the **Start** icon > Then select **Device Manager** from the displayed list.

2. **Step 2** : Find the **Print queues** line and double-click on this item to expand > Right-click on your printer and select **Update Driver** .



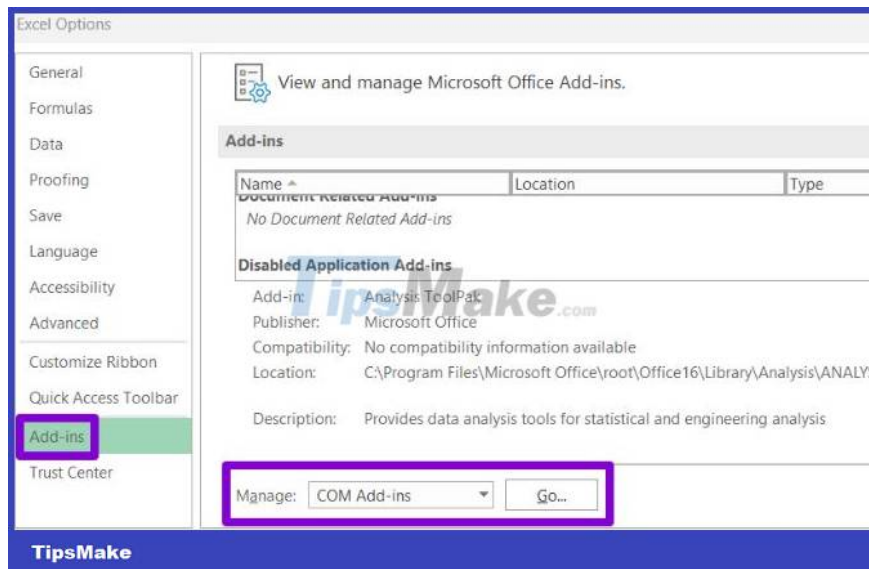
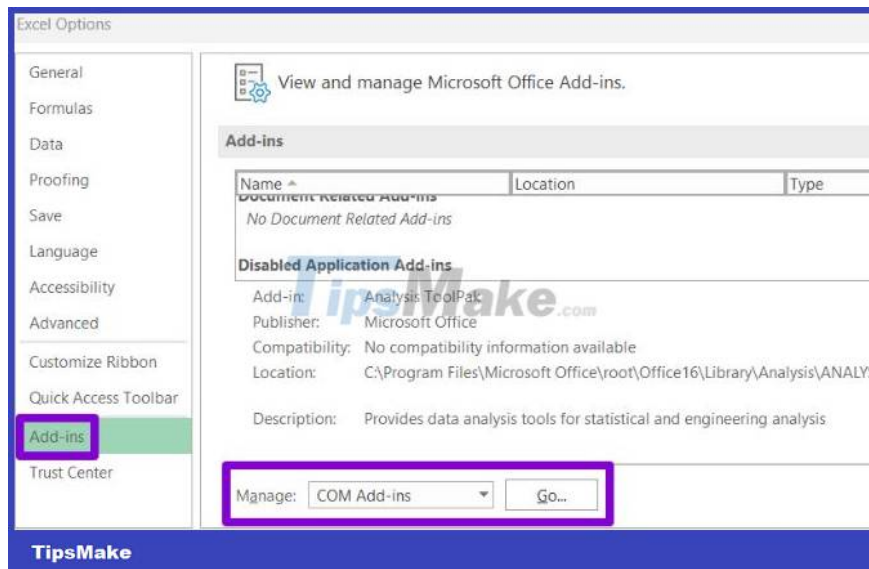
1. **Step 3** : Continue following the instructions on the screen to complete the update process. Restart your PC and check if the problem is fixed or not.

## 2/ Open Excel in Safe mode

This is also a way for you to determine whether an Excel add-in is the 'culprit' causing the Accessing Printer error when opening an Excel file. **What you need to do is press the Windows + R** key combination > Enter the keyword ' **excel -safe** ' in the box and press **Enter** or **OK** > If a message is displayed, press **Yes** .

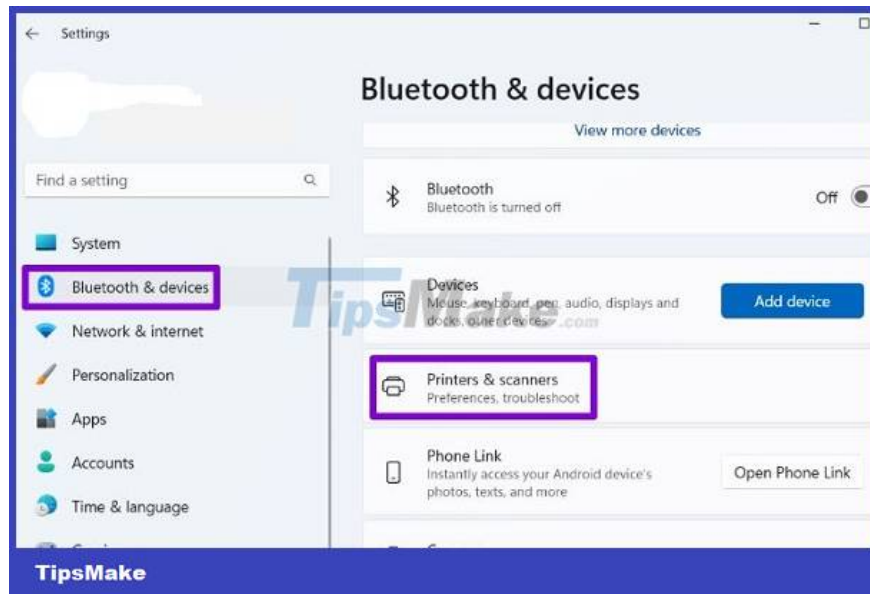
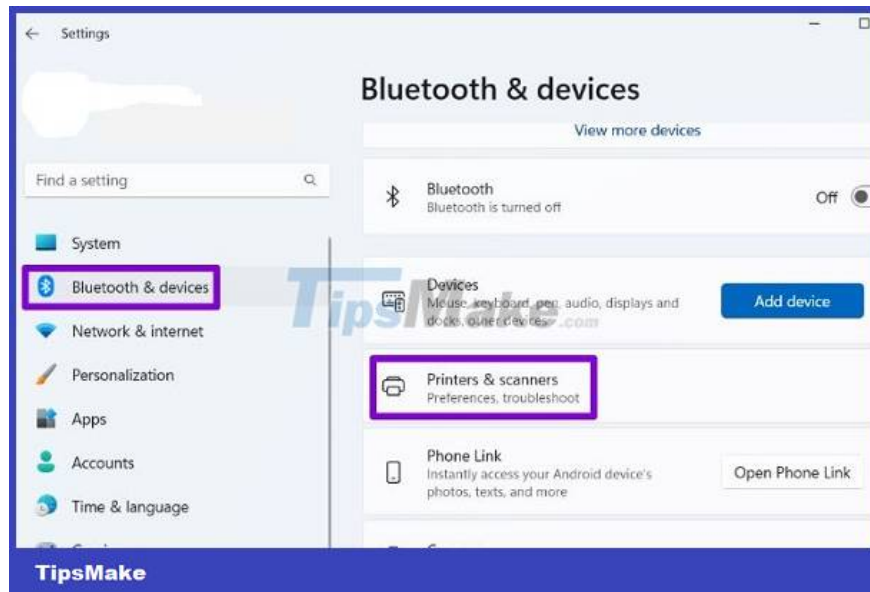
After accessing safe mode, open the file to see if Excel encounters any errors. If it still works smoothly, there is a high possibility that the Excel add-in is having problems. Please exit Excel safe mode > Open Excel in normal mode > Navigate by path:

1. **File > Options > Add-ins > Find the Manage line > Select COM Add-ins > Click the Go button > Uncheck add-ins > Click OK to close and check for errors.**

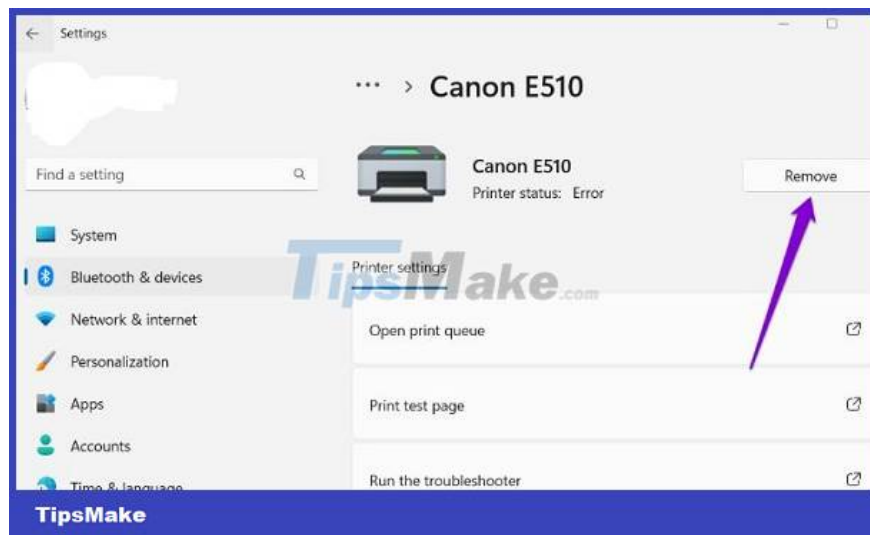
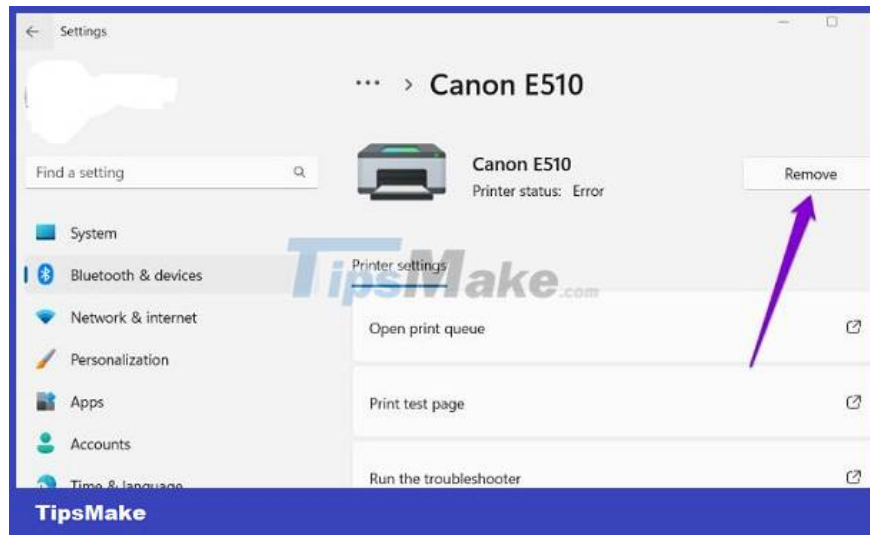


### 3/ Uninstall and reinstall the printer or change the default printer

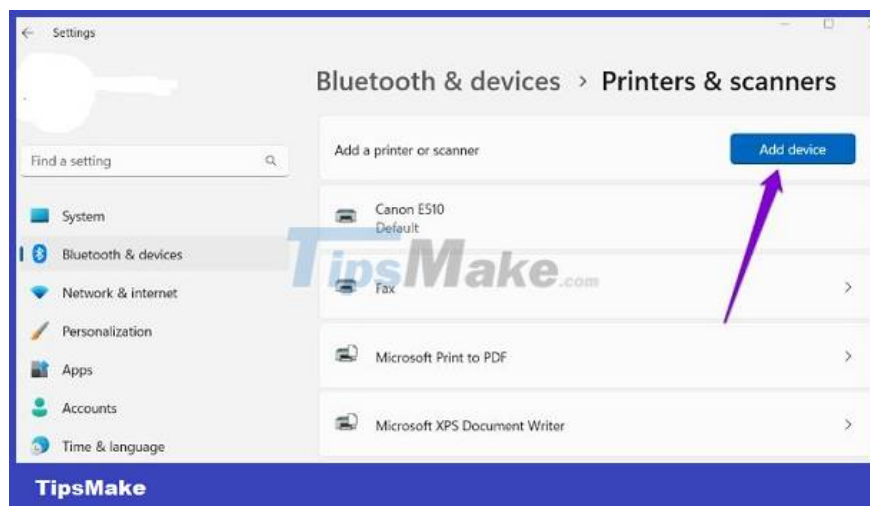
1. **Step 1 : Users need to press the Windows + I key combination to open the settings.**
2. **Step 2 : Click Bluetooth & devices in the left list > Select Printers & scanners in the right list.**

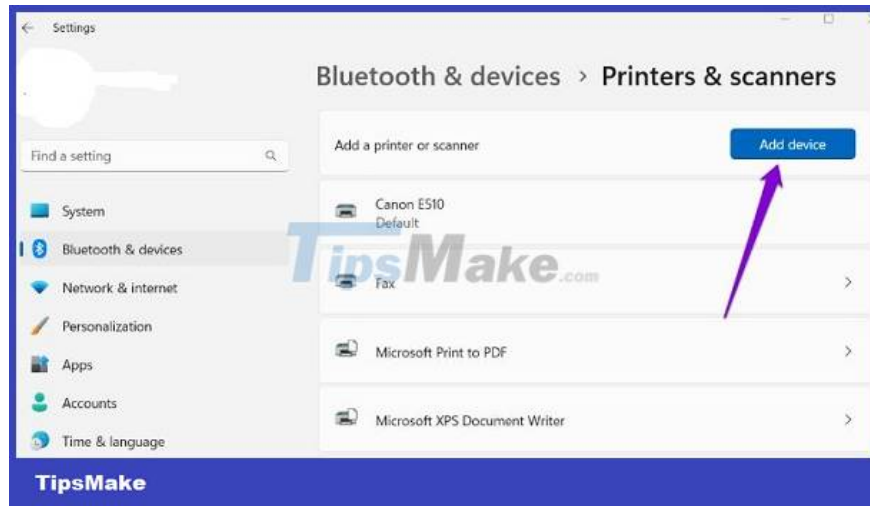


1. **Step 3** : Select the printer you are connecting and using from the list > Click the **Remove** button above to delete.



1. *Step 4 : After deleting, return to the Printers & scanners interface > Click Add device > Add the printer again or change to another default printer.*





*Above is a summary of information about Accessing Printer errors when opening Excel files. Hope you do it successfully!*

You finished reading the article "**Accessing Printer error when opening Excel file - Summary of effective solutions**" edited by the [TipsMake](https://www.tipsmake.com) team. We hope this article has provided you with many useful tech tips and tricks. You can search for similar articles on tips and guides. Thank you for reading and for following us regularly.