

Access Windows Remote Desktop via Internet

There are several solutions to access remote computers via Internet like TeamViewer, VNC. However, if you are running Professional version of Windows, Remote Desktop is installed in Windows. Before continuing, enable Remote Desktop on your computer and make sure you can access it from other computers on your local network.

There are several solutions to access remote computers via Internet like TeamViewer, VNC. However, if you are running Professional version of Windows, Remote Desktop is installed in Windows.

Before continuing, enable **Remote Desktop** on your computer and make sure you can access it from other computers on your local network.

1. Set up VPN

If you create a virtual private network (VPN), you will not have to "*expose*" the Remote Desktop server directly to the Internet. Instead, your computer will first have to join the VPN. The remote computer will act as if it is part of a local network like a computer running a Remote Desktop server, allowing you to access Remote Desktop and other services only on your local network.

Among the many VPN applications you can use to create your own VPN, we recommend LogMeIn Hamachi. Download and install **LogMeIn Hamachi** on the computer you want Remote Desktop to enter.



Once you have created an account, you can log in to Hamachi on another computer and take both machines to join the same '*Hamachi network*'. They will act as if they are directly connected, even if you are doing this over the Internet.



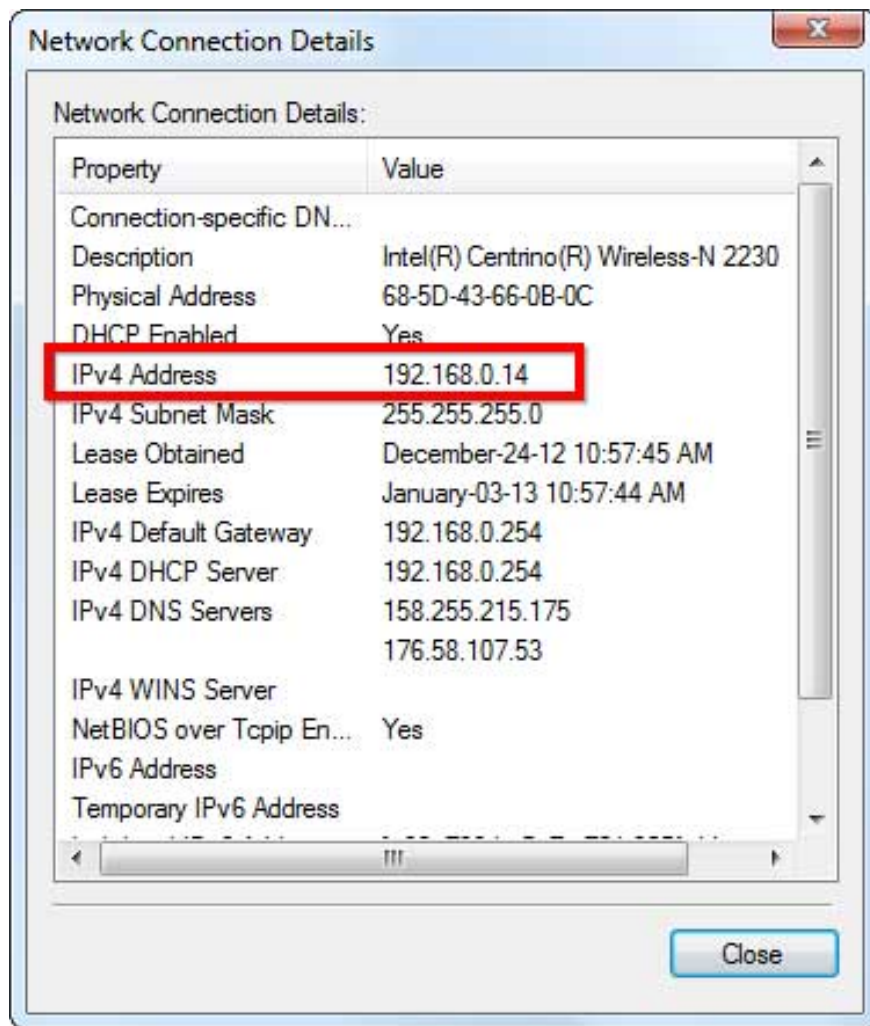
You can now use the Remote Desktop Connection application on your computer to connect to the Remote Desktop server. Use the IPv4 address of another computer (displayed in the Hamachi window) when you are connected.



2. Forward TCP port 3389

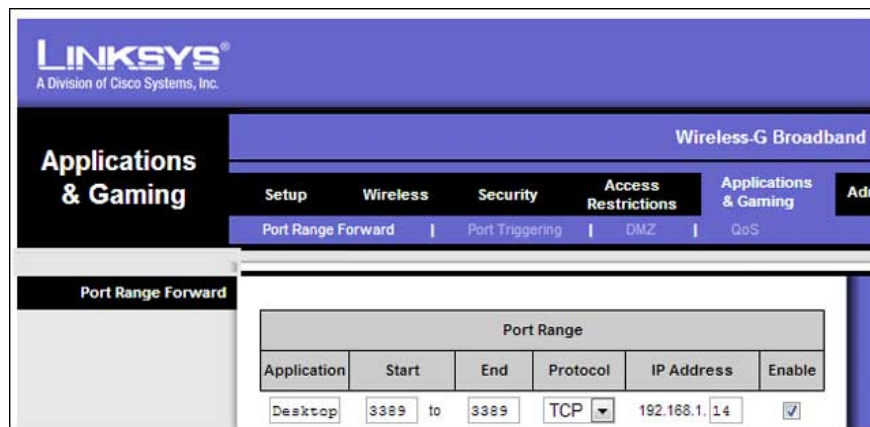
You can also bypass VPN and expose Remote Desktop server directly to the Internet. If you do so, make sure that you have set a strong password on your computer so that the bad guys cannot log in remotely. If you follow this guide, you will forward TCP 3389 port to the computer running Remote Desktop.

First, locate the IP address of the computer running Remote Desktop. On the computer running Remote Desktop, open **Control Panel**, click **View network status and tasks**, click on the name of the current connection (on the right side of Connection), then click the **Details** button, note the number displayed on the side right of IPv4 Address.



Next, access the router's web interface. If you don't know its address, it may look like the **'IPv4 Default Gateway' address** in the Network Connection Details window above. Type this address into the address bar of your web browser to access the web interface of the router.

Log in to the router and locate the **Port Forwarding** section. Forward TCP 3389 to the IPv4 address you specified earlier.



You can now log in to Remote Desktop via the Internet - Connect to an IP address outside your network (also known as a public IP address).



You finished reading the article "**Access Windows Remote Desktop via Internet**" edited by the [TipsMake](#) team. We hope this article has provided you with many useful tech tips and tricks. You can search for similar articles on tips and guides. Thank you for reading and for following us regularly.