

Access Exchange 2007 from Apple Macintosh (Part 2)

In the last part of this two-part article, I will show you how to configure Entourage 2004 for Exchange access and then discuss some of the pros and cons of each solution. We will access each client based on the criteria below.

Access Exchange 2007 from an Apple Macintosh computer (Part 1)

Nathan Winters

In the last part of this two-part article, I will show you how to configure Entourage 2004 for Exchange access and then discuss some of the pros and cons of each solution. We will access each client based on the criteria below.

1. Basic mail function
2. Flag email notifications
3. Access the folder other than the mailbox
4. Access public folder
5. Schedule - busy / free
6. Settings other than the Out of Office notification
7. Access individual mailbox contacts
8. Looking for GAL
9. Offline access
10. PST Import / Export
11. Filter mail
12. SSL security

Configure the clients (continue)

In part one of this article, I have shown you the configuration required to set up Mac Mail for Exchange access and also briefly mentioned some of the settings changes needed for accessing OWA from the process. Browse Apple Safari. This section will continue the steps needed to install Entourage 2004.

Before opening Entourage, there is an important setting to change the Client Access Server (CAS). As you know, Entourage uses WebDAV to access Exchange in the way that Outlook Web Access 2003 has worked. This means that it accesses the virtual / Exchange directories and / Public. By default WebDAV is not enabled on an Exchange 2007 CAS-enabled computer so it must be changed to allow Entourage to work. To change settings, open Internet Information Services (IIS) Manager, select " *Web Services Extensions* " and check the WebDAV option as shown in Figure 1.

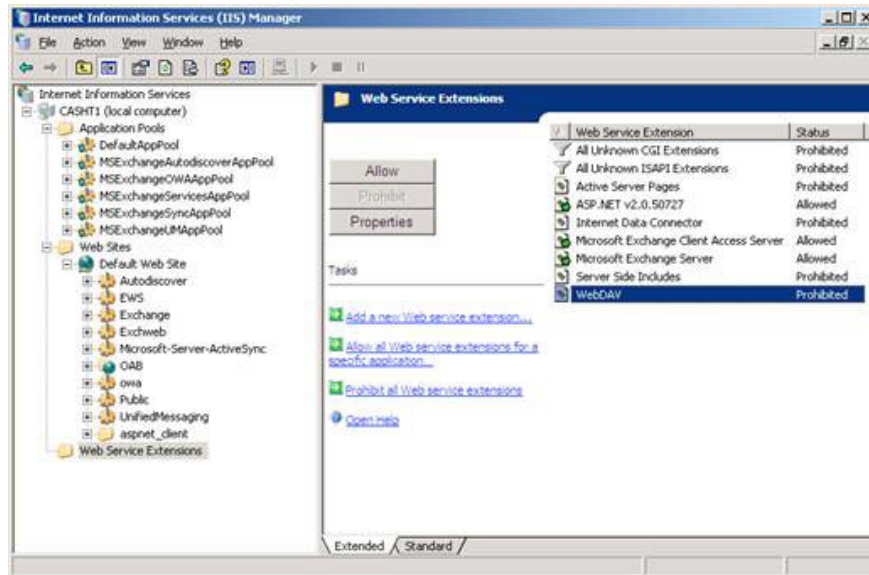


Figure 1: IIS Manager WebDAV extension

Click " Allow " to activate WebDAV and ensure that the status currently displays " Allowed " as shown in Figure 2. Making this configuration change you can run Entourage.

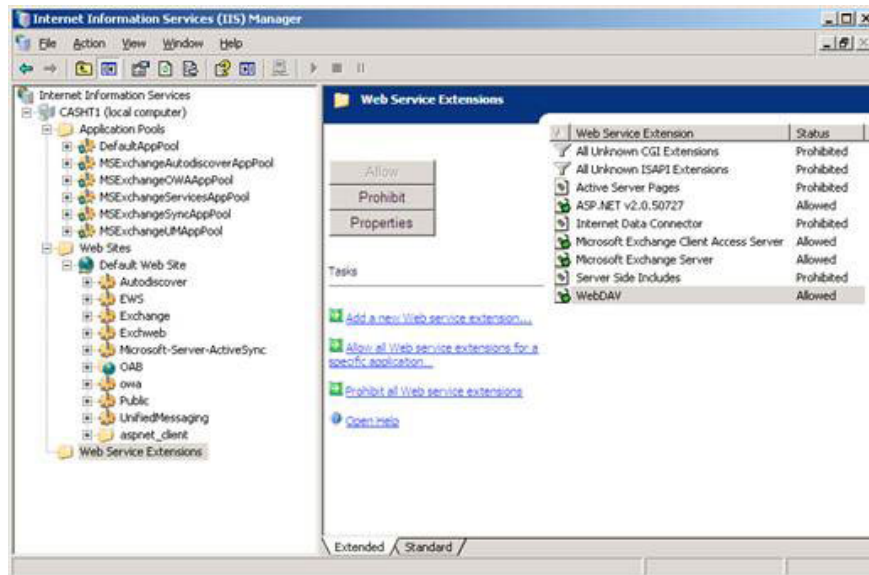


Figure 2: IIS Manager after activating WebDAV

When running Entourage for the first time, the " Entourage Setup Assistant " will start and can guide you through reporting mail from other Web clients and then setting up accounts. The first page is shown in Figure 3.

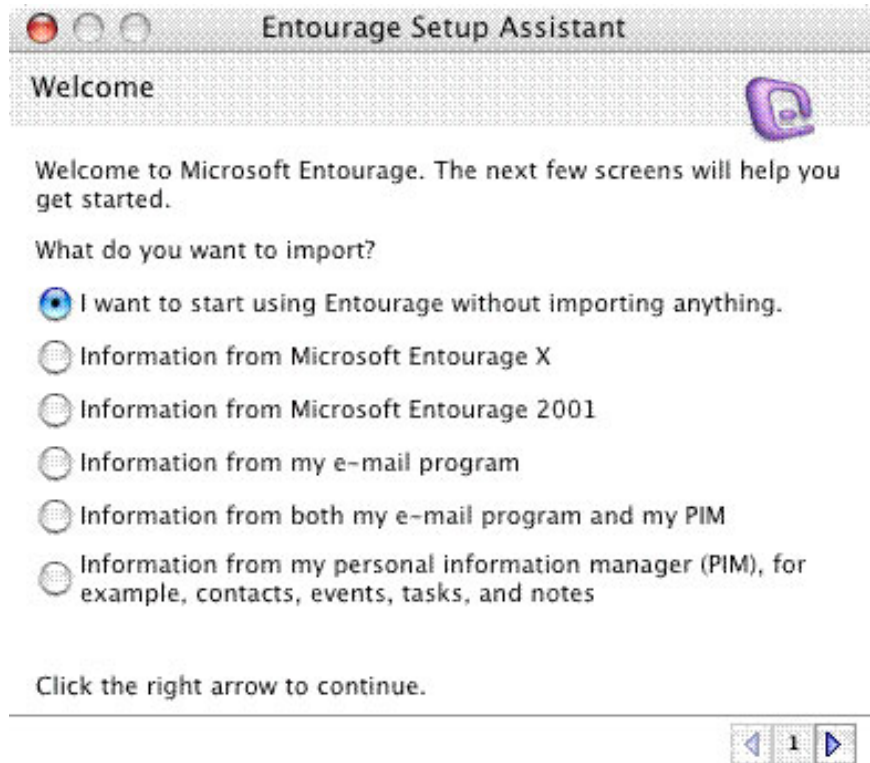


Figure 3: Import options in Entourage Setup Assistant

In this case, we canceled the support because before we started setting up the accounts, it is important to have all the latest updates for Entourage 2004. To do that, please Go to the " *Help* " menu and select " *Check for Updates* ". Once we have all the latest upgrades, we have set up an account.

Select the " *Entourage* " menu and click *Account Settings* . On the " *Accounts* " window that opens as shown in Figure 4, click on the drop down next to New and select *Exchange* .

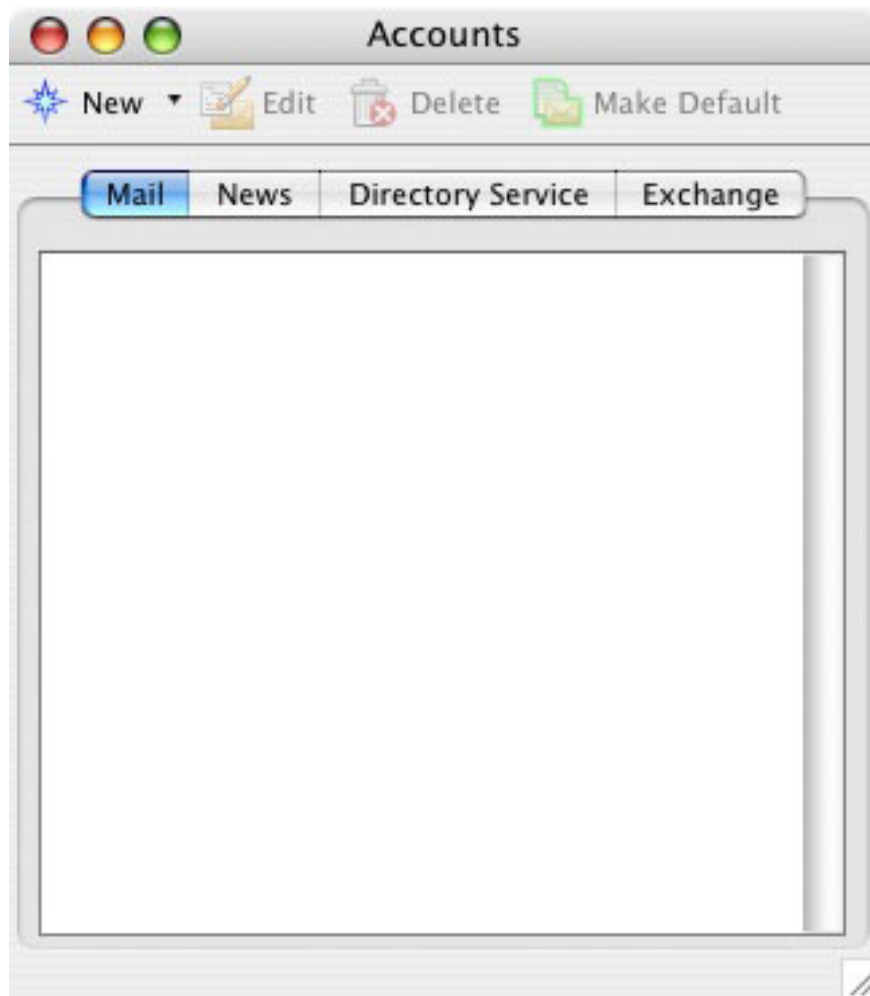


Figure 4: The Accounts page

When the window like Figure 5 is displayed, you can now start the account creation utility.

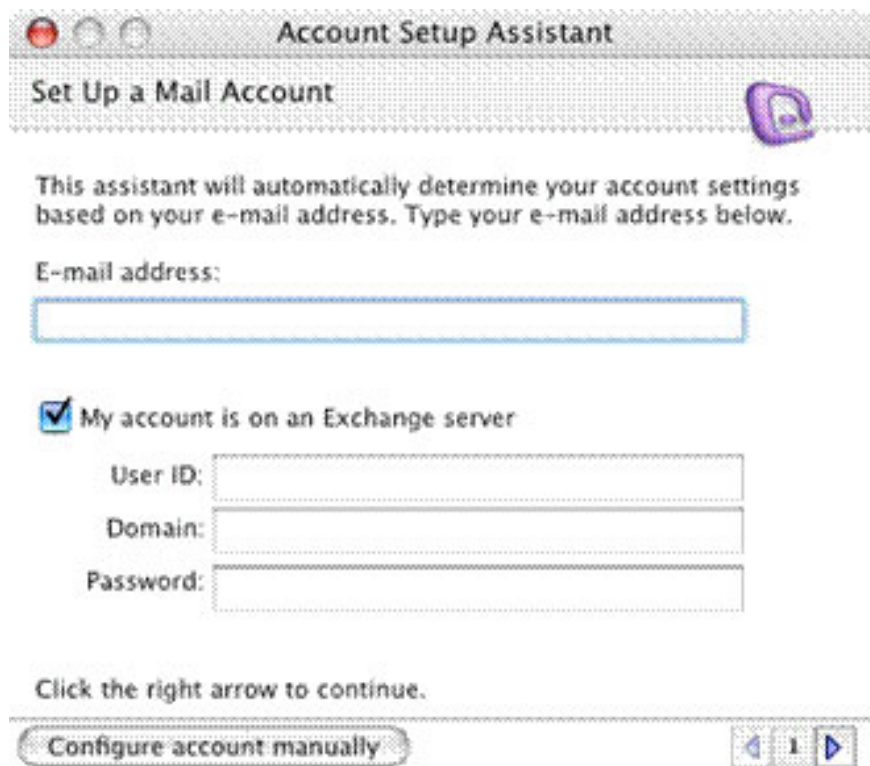


Figure 5: The first page of Account Setup Assistant

The first thing to keep in mind when using Entourage with Exchange 2007 is that the auto function does not work, so to perform the process, click " *Configure account manually* ". On the page then you enter the details as illustrated in Figure 6.

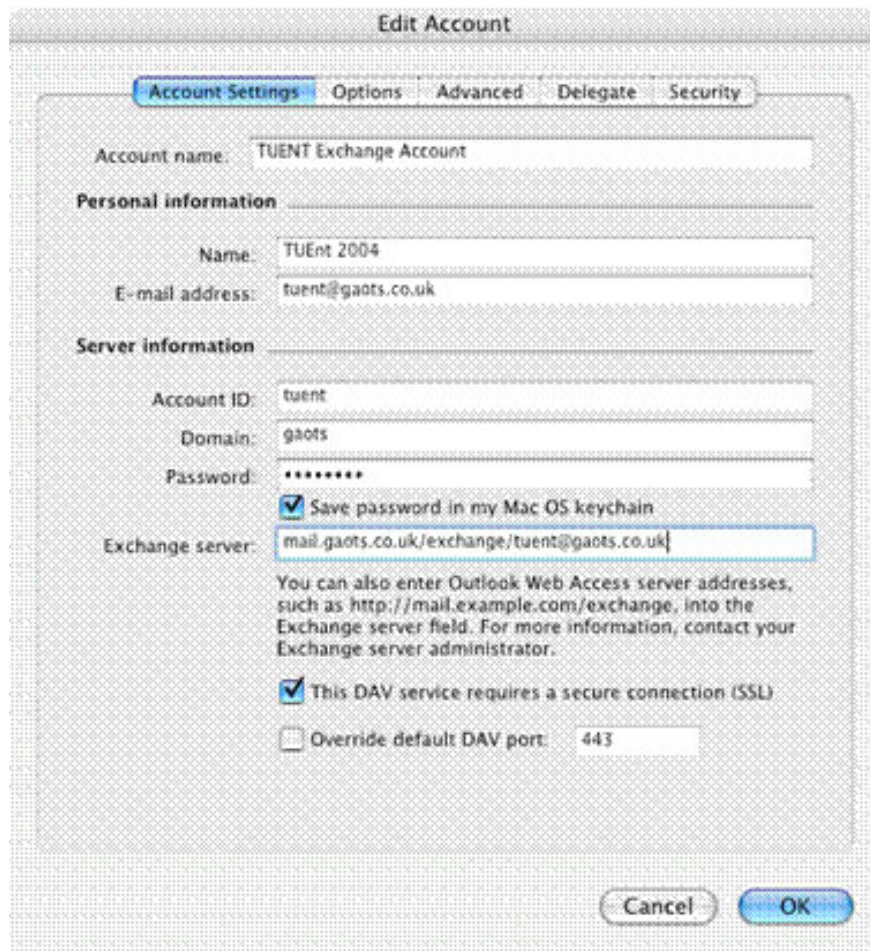


Figure 6: Main account settings page

The most important thing to note is the format for entering details into the Exchange server details. As mentioned, Entourage uses WebDAV to access Exchange as well as in OWA 2003. Therefore, the path set will need to have the legacy OWA virtual directory / exchange. It is complete with the user's email address.

When you have completed these steps, switch to the "Advanced" tab in the settings shown in Figure 7. Replace the specific values ??with your server names. Note that we have enabled SSL for public folder access. In the LADP section we configured Entourage to point to one of the Global Catalog servers and set it to login. To finish, click OK. In this section, we propose to exit and reopen Entourage to ensure new settings are taken.

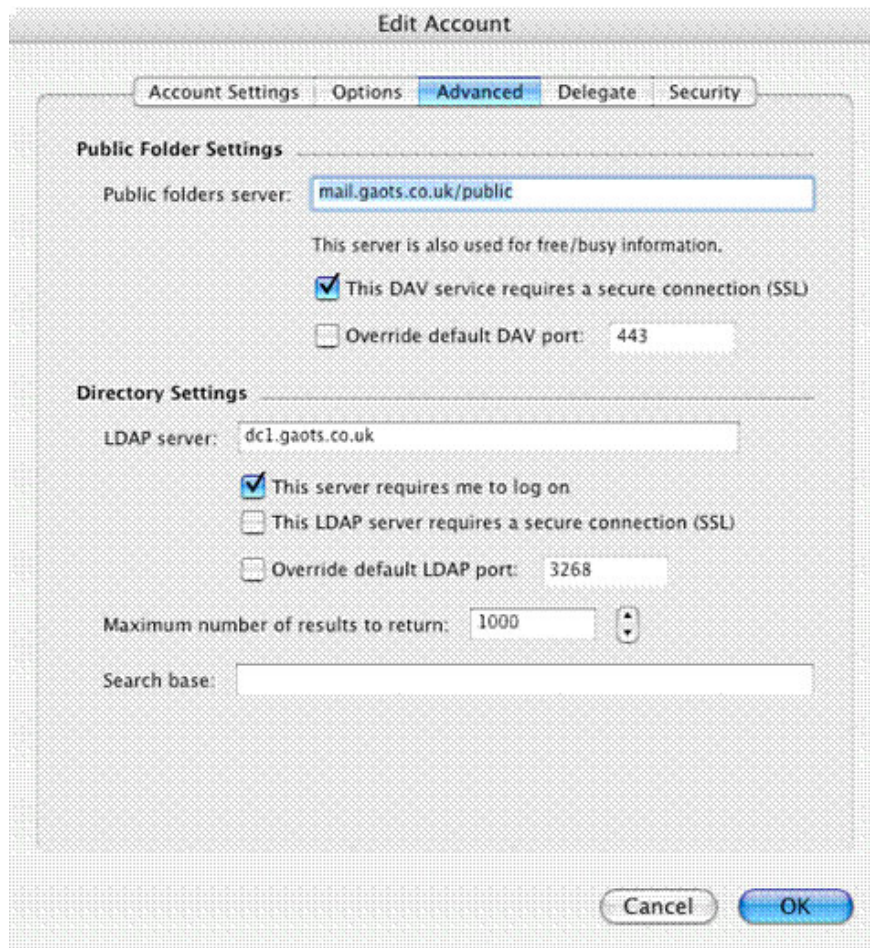


Figure 7: Advanced account settings for public folders and LDAP settings

When you restart Entourage you will be prompted to enter the details of the user, typically the password shown in Figure 8. Once you have done that, click OK and wait for Entourage to sync with Exchange.

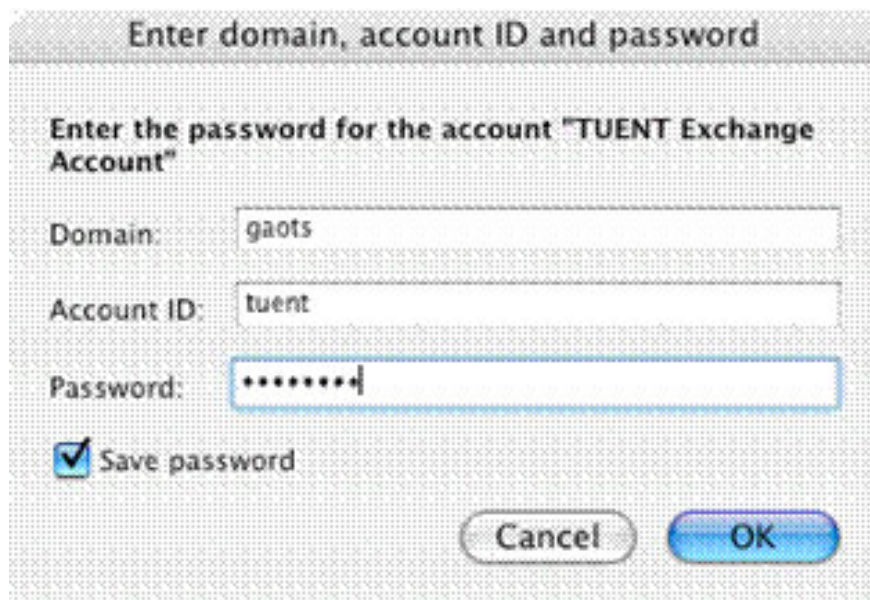


Figure 8: Enter user information and password

Once you have completed the above configuration, Entourage will be functional and demonstrated in Figure 9, 10, and 11, you will have access to features such as GAL search, public folder access, Message mark and on the drama.

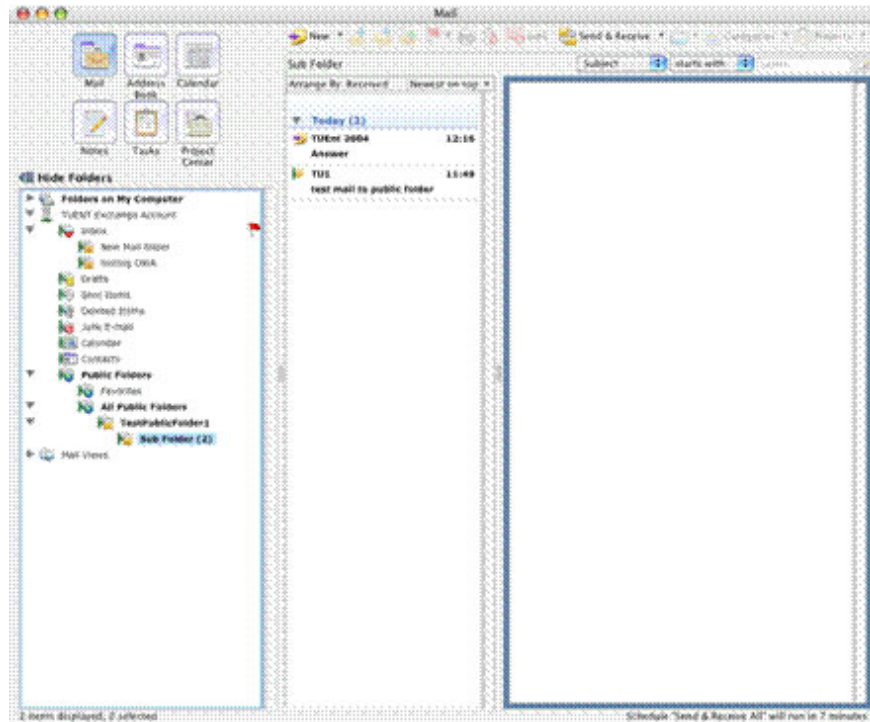


Figure 9: Entourage's Public folder public folder interface

Observe traditional directories under Inbox.

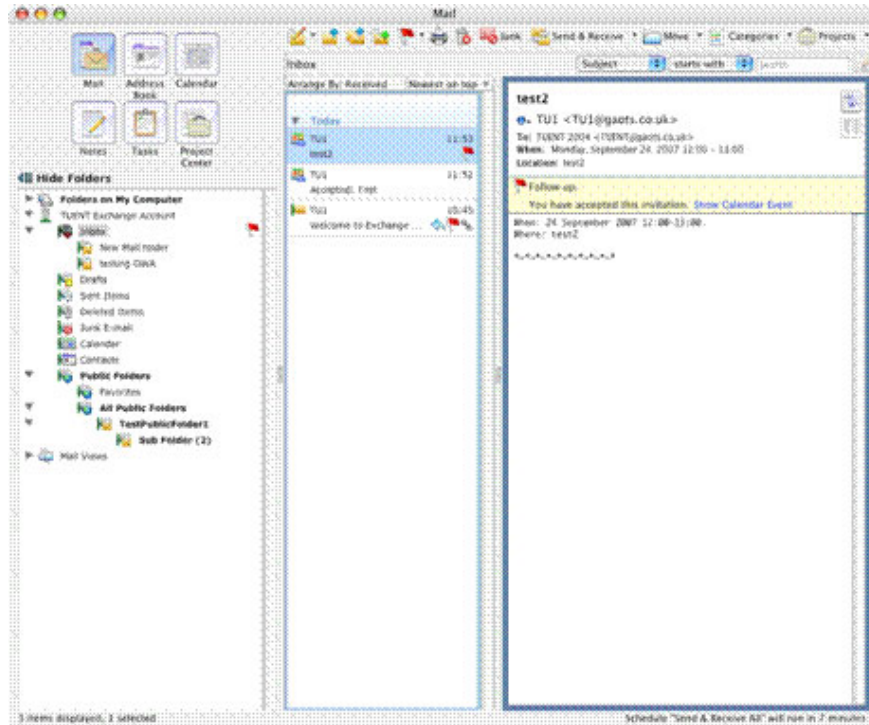


Figure 10: Mark Message and observe approvals

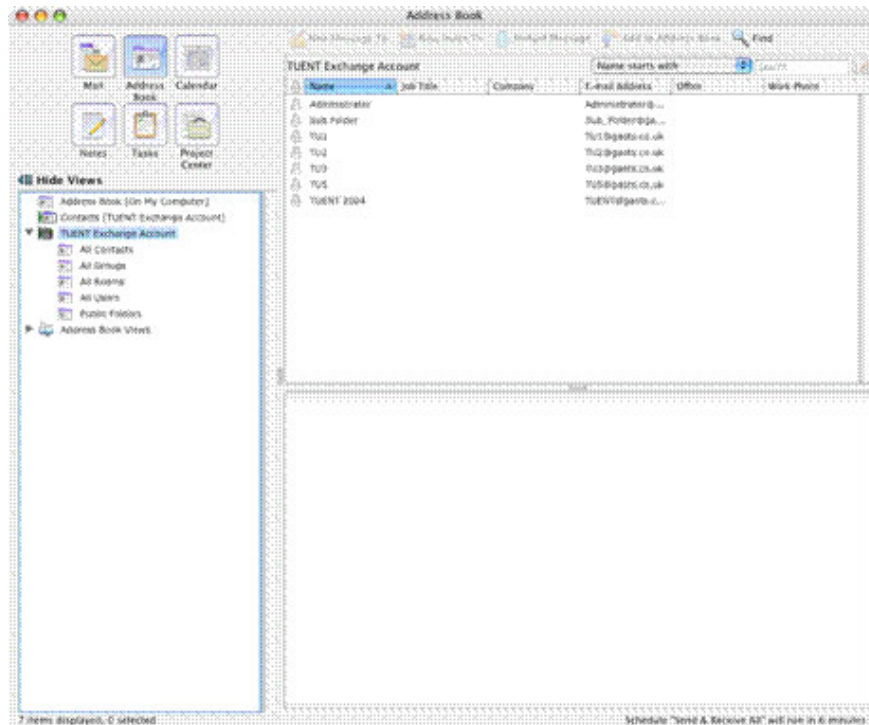


Figure 11: Look up address book

Before moving on to discuss the pros and cons of each client, you can see that we did not introduce the Outlook Web Access configuration in addition to the brief information mentioned in Part 1 of the certificate installation.

origin. The reason for this is that there is no traditional configuration required other than the usual OWA installation done for all clients. However, we will show in Figure 12, 13 and 14 so that you can see a little bit about its interface.

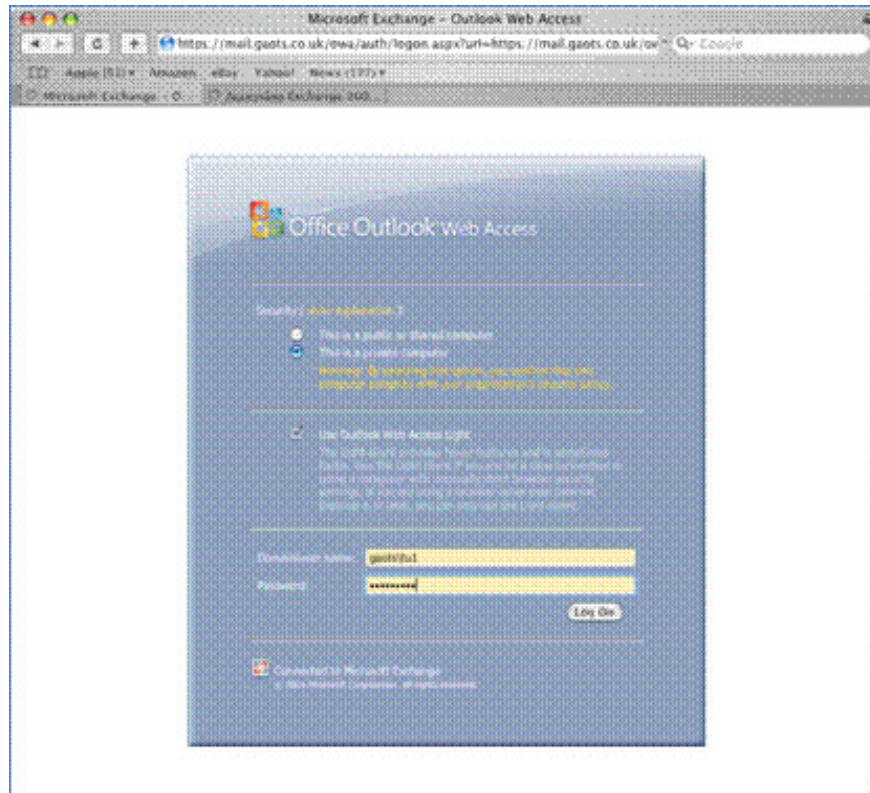


Figure 12: The login page displays only the Outlook Web Access Light option

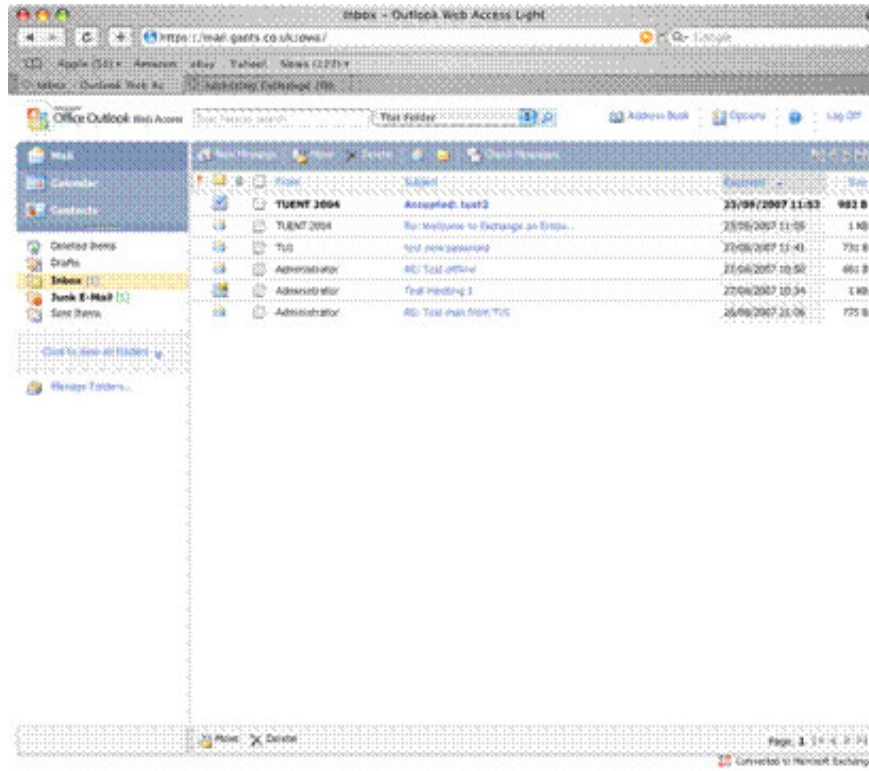


Figure 13: OWA Light interface

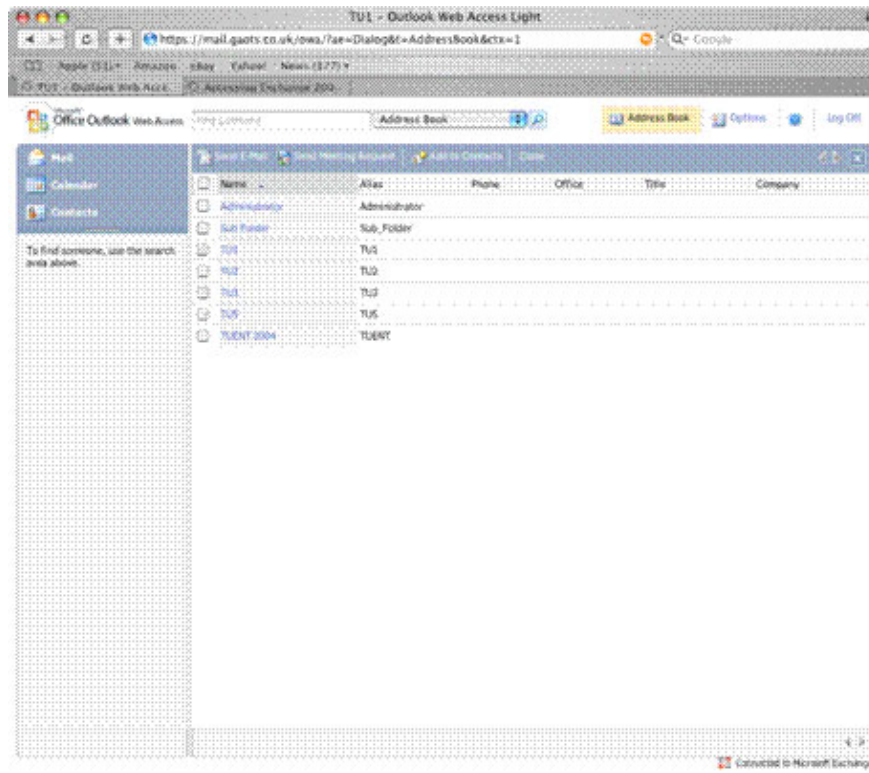


Figure 14: Look up OWA address book

Clients - pros and cons

To begin this section, we will show in Table 1 the results of testing different client features.

Mac Mail 2.1.1

Entourage 2004 SP2

Outlook Web Access in Safari Browser

Basic mail function

Yes

Yes

Yes

Check Email message

Partial

Yes

Yes

Access the folder outside the inbox

Partial

Yes

Yes

Access public folder

Yes

Yes

Until there is SP1

Busy / free schedule

No

Yes

Yes

Set Out of Office Message

No

No

Yes

Access personal mailbox contacts

No

Yes

Yes

Looking for GAL

Yes

Yes

Yes

Offline access

Yes

Yes

No

PST Import / Export

The third group

Partial & third group

No

Filter Mail

Yes

Yes

Yes

SSL security

Yes

Yes

Yes

Table 1: Features available in different clients

Mac Mail

We found out that Mac Mail is a simple client with reasonable functionality but not much! Sending and receiving mail is simple and works well, drafts are saved on the server. You can access subdirectories for some extent as introduced in Part 1. However, by doing so, you will lose access to the discarded mail filtered by Exchange. Another problem is the ability to mark next email messages. While this is possible, the markup seems independent between Mac Mail and Exchange. For example, marking on a client other than Mac Mail (OWA)

can cause mail to not appear on Mac Mail and then return after you move Mac Mail from offline to online.

Mac Mail allows directory access although it seems to be restricted in the main client by the existence of an automatic address space. In address book applications, it is also searchable.

The schedule does not work in case the meeting requests do not have any positive content placed in the schedule. Similarly it does not appear to perform free / busy lookups or send meeting requests.

Outlook Web Access

Overall, we found that the OWA client is very capable, although compared to the complete OWA client it is still not intuitive to use. All mail folders are easily accessible like address books. It can also use new Exchange search features. A complete range of Exchange schedule features is available. Typically, OWA is also the only way to set up an Out of Office notification until Entourage 2008 is released.

The main limitations of the OWA client are also quite obvious in web access, no offline access, and similarly there is no method for importing or exporting PST files.

Another thing that is not included in OWA is public folder access. This issue will be added when Exchange 2007 SP1 is released.

Entourage 2004

Previous experiences with Entourage made us have a negative review of the client, although after doing this test, we completely changed our views. Entourage 2004 SP2 with its patches is an excellent client tool for Exchange access. All mail functions work well in public folders, accessing small inbox folders. A coincidence we discovered, is that rebooting after adding new public folders is necessary for them to appear. Message markup is also provided in GAL search and offline access. Entourage's scheduling features are really great with busy / free searches and meeting acceptance. Another feature that is provided is proxy access and access to other users' directories.

Entourage has shown the best for PST import with an MS tool to switch from Outlook 2001 of Mac to Entourage. However, to import Windows PST files we still need a third-party tool.

Conclude

We will leave the decision to show you which client you like best! In my opinion, the Entourage 2004 client is an optional decision, which gives you the most flexibility and ease of use, although there are still some features like the Out of Office message that need to be wait until the release of Entourage 2008. Alternatively, if all you want is a simple client / free access to Exchange, Mac Mail will be a perfect solution.

We hope this article will give you an overview of possible methods and what can bring many benefits in each type of access. One thing that will be available in the near future is the release of Office 2008 for Mac, which will bring a lot of strength to users when accessing Exchange on Mac.

You finished reading the article "**Access Exchange 2007 from Apple Macintosh (Part 2)**" edited by the [TipsMake](#) team. We hope this article has provided you with many useful tech tips and tricks. You can search for similar articles on tips and guides. Thank you for reading and for following us regularly.

