

Access and control remote Windows computers via Mac OS X system

Computers using Windows XP Professional, and some versions of Windows Vista or 7 (except Home, Basic and Starter) can be remotely controlled via the Remote Desktop Connection feature. This process allows others to log in and use Windows-based computers as if sitting directly next to them ...

QuanTriMang - Computers using Windows XP Professional, and some versions of Windows Vista or 7 (except Home, Basic and Starter) can be remotely controlled via the Remote Desktop Connection feature. This process allows others to log in and use Windows-based computers as if they were sitting next to them. Besides, the computer with Windows with *Remote Desktop Connection* feature can also accept other connection protocols from other operating systems, for example Mac OS X with the *Microsoft Remote Desktop Connection Client* for Mac.

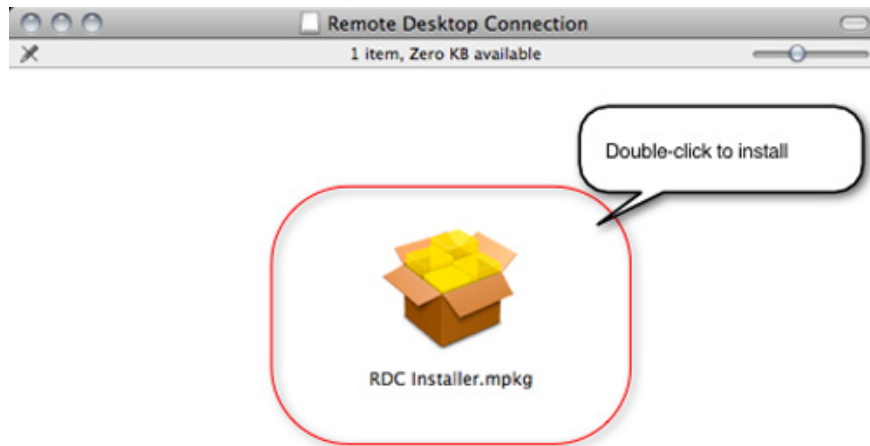
In the following tutorial, we will cover the basic steps to install and use the *Remote Desktop Connection Client function* for Mac, and connect to a Windows computer that has *Remote Desktop Connections* enabled mode .

Install the Remote Desktop Connection Client for Mac:

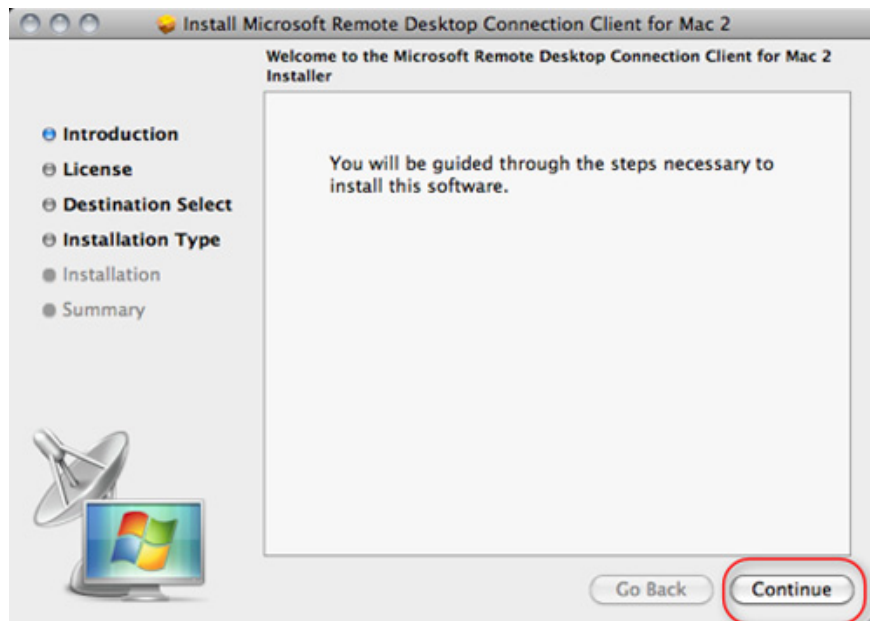
This feature comes with the Microsoft Office 2011 suite for Mac, or download directly here:



After successful download, double click *RDC Installer.mpkg* file to start the installation:



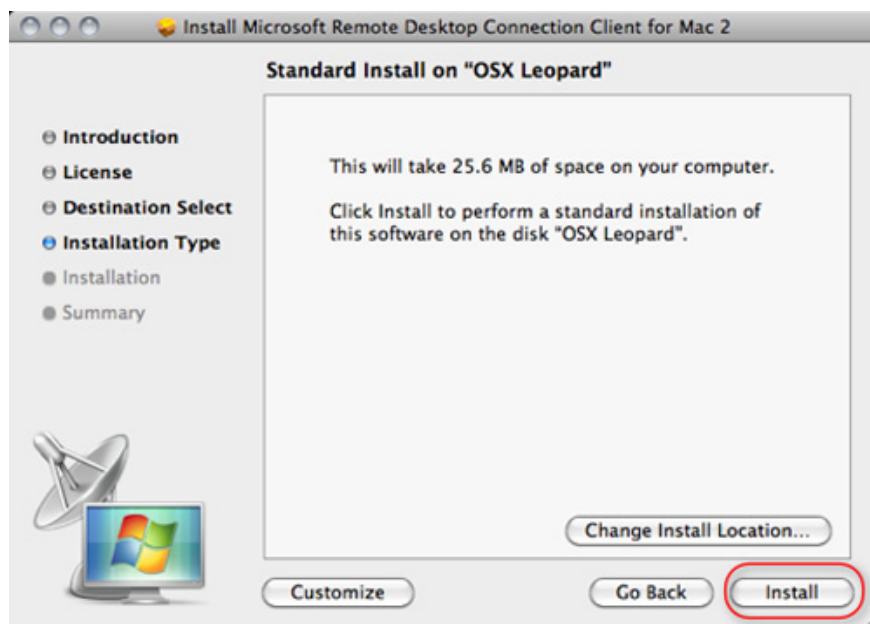
And follow the instructions of the program, click *Continue* to continue:



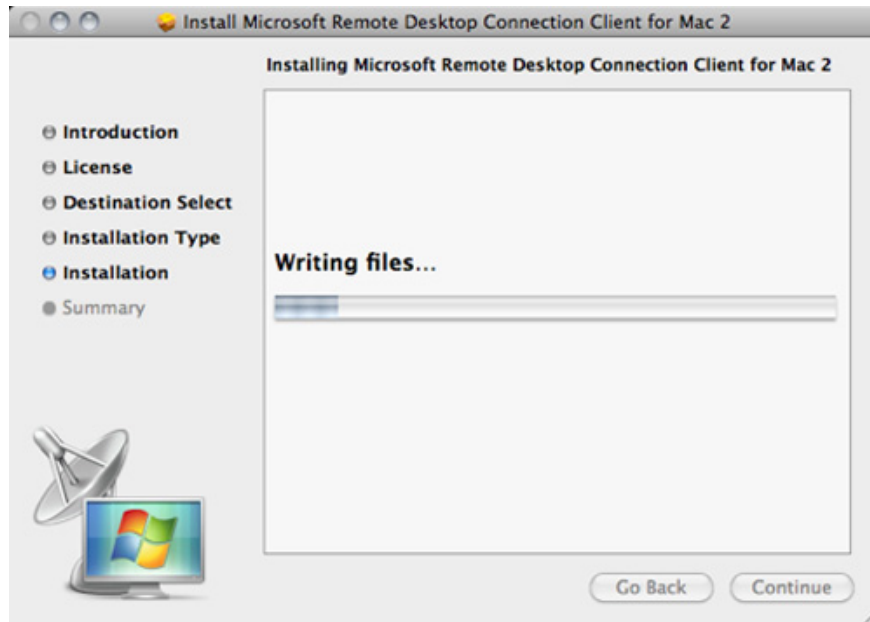
Refer to the *Software License Agreement* terms and agreement before clicking *Continue* :



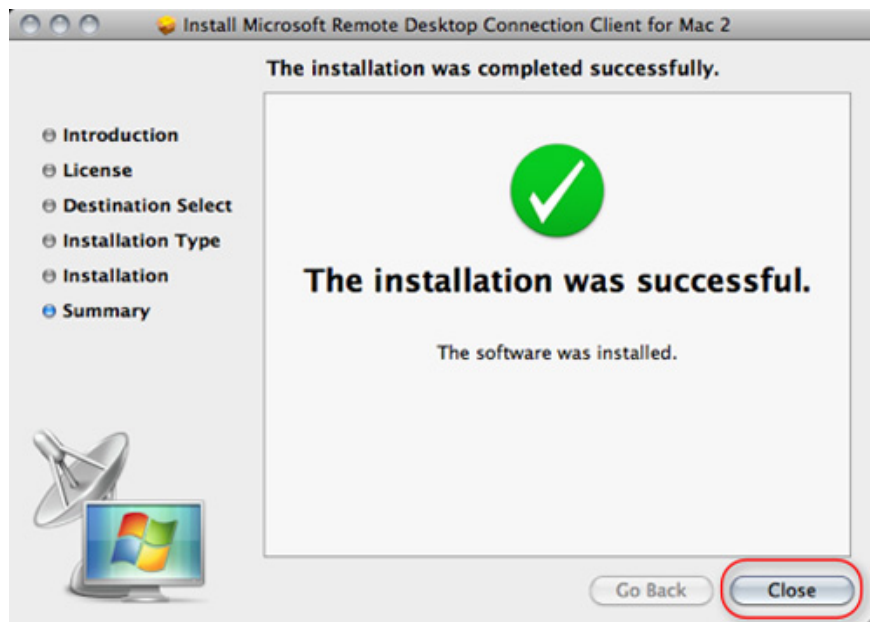
By default, the *Remote Desktop Connection Client* will automatically install to the system drive - install and store the operating system partition. Then click *Install* :



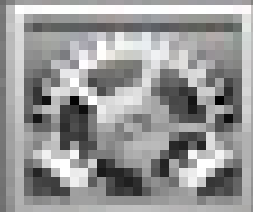
Wait for this installation process to complete



Click *Close* to close the window:



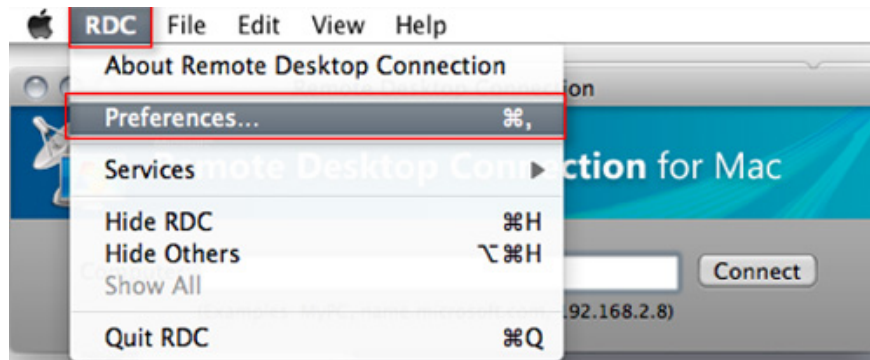
Now, you can use *Remote Desktop Connection* from the *Dock* bar at any time:



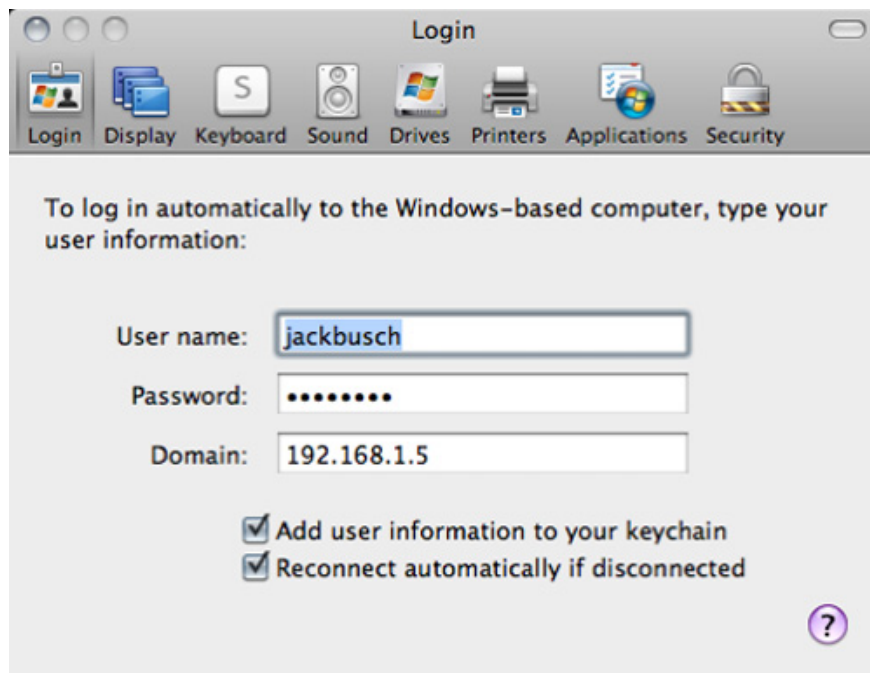
The first time you start the program, you can apply the default settings. But in order to meet the needs of improving security and performance, we should probably create certain rules. To use it, you need to enter the exact name of the computer to connect to in the *Computer* section, but if you don't know the name of the computer, search directly at *System Properties* on the computer you want to connect to:



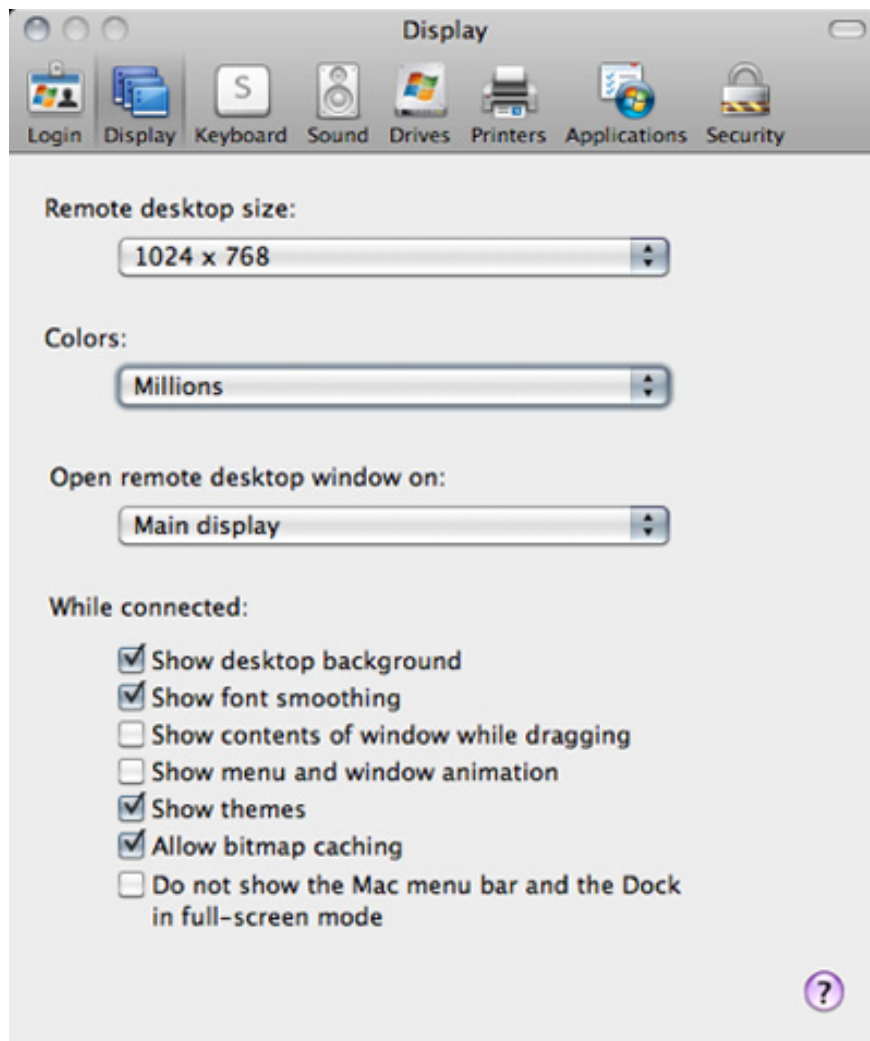
Select *Preferences* for this connection via *Remote Desktop Connection* menu > *Preferences*:



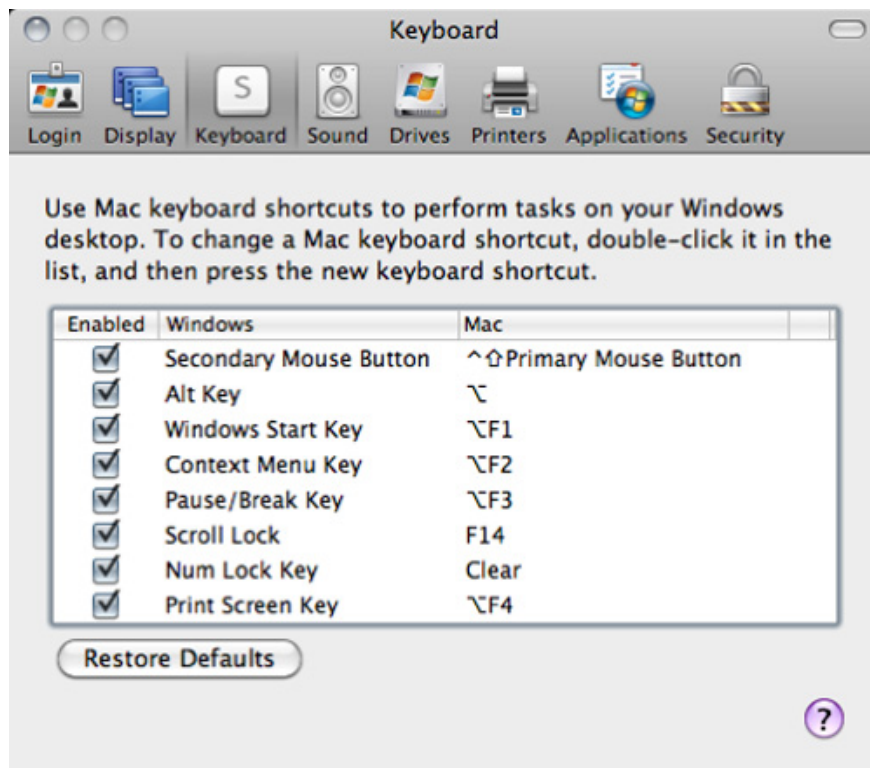
At the *Login* tab, you can choose your username, password and domain. This username and password corresponds to the account level on the main computer, or the normal account has been activated to use the *Remote Desktop Connection*:



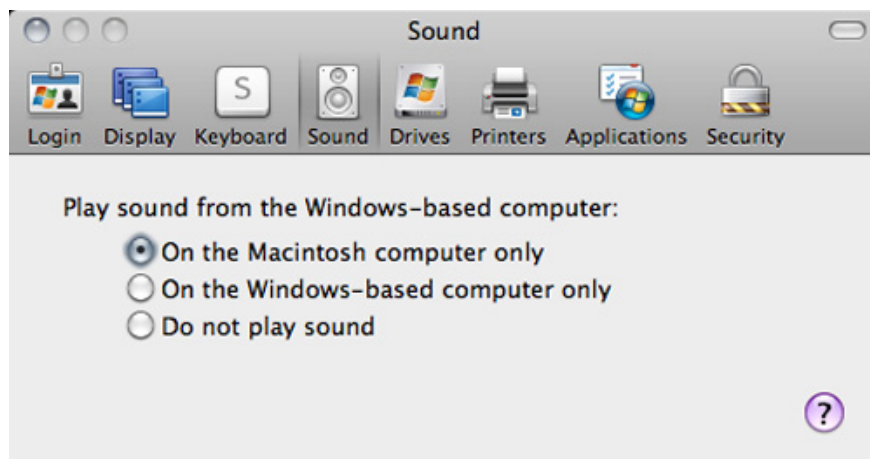
But if you encounter the correct name of the computer but still can't connect, replace it with the IP address to resolve the problem. If you want to save information for the next login, select *Add user information to your keychain* , and *Reconnect automatically if disconnected* so that the system automatically reconnects when it is interrupted midway. At *Display* card, users can customize some other information such as color mode, screen size . turn off unnecessary effects to increase data transfer speed and performance , such as a background image, theme, switch the windows menu to Basic mode . for example:



The default *Keyboard* settings for Mac operating systems, you can adjust to suit the type of keyboard used by Windows:



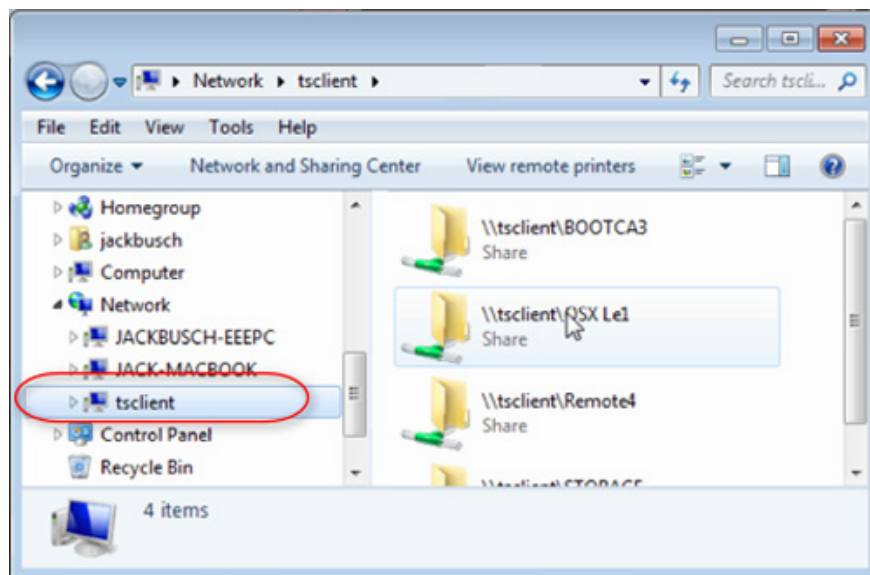
Sound playback mode in *Sound* section, if you want or do not want to have sound on Windows - Macintosh, you can adjust it here:



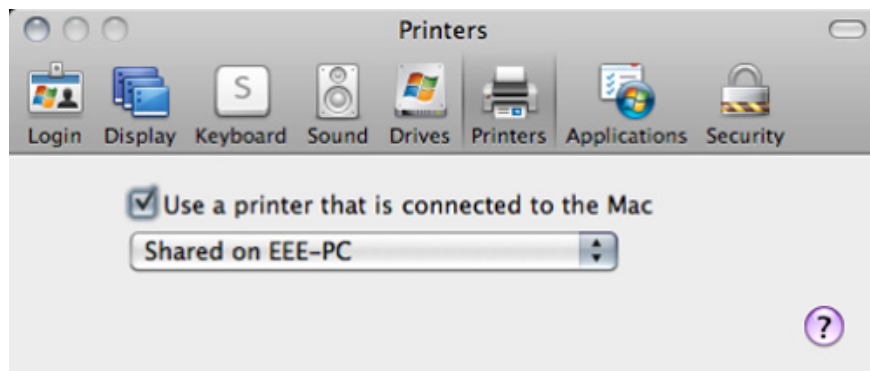
In the *Drive* card, you choose which partition on the hard drive can share and use via Windows computer:



These drives will be displayed in the *tsclient* section in *Windows Explorer*, and here, users can record and read files from the *Macintosh*:

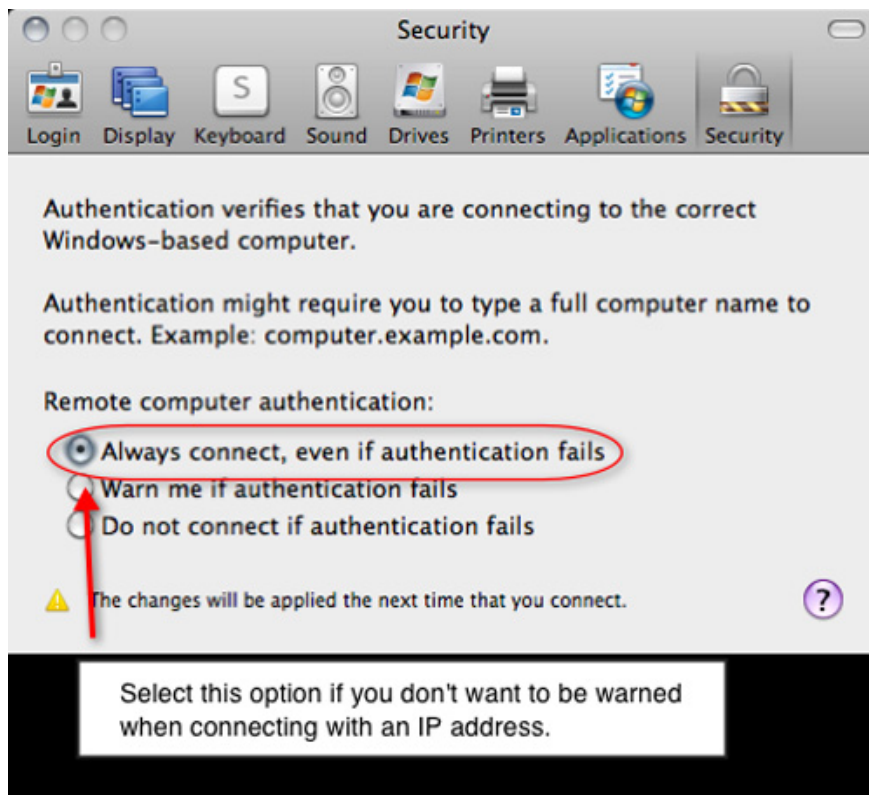


On the other hand, printer sharing is also very helpful. When you connect any printer to a Mac computer, Windows will also receive information and use that printer:

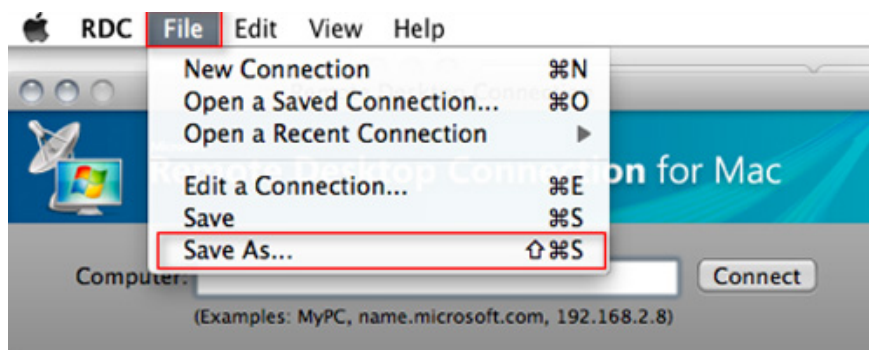


In the Security tab, you can change your account confirmation information. In essence, Remote Desktop Connection will try to protect the user when connecting to any other computer, by checking that the machine's name matches the certificate - the *certificate* of the address range or the name in system. If it does not match, the identification process will fail, and in this case, you can still make the connection.

But in most of these situations, the third option - *Do not connect if authentication fails* is the most secure. But if you enter the IP address instead of the machine name, select the second item - *Warn me if authentication fails* or first - *Always connect, even if authentication fails*:



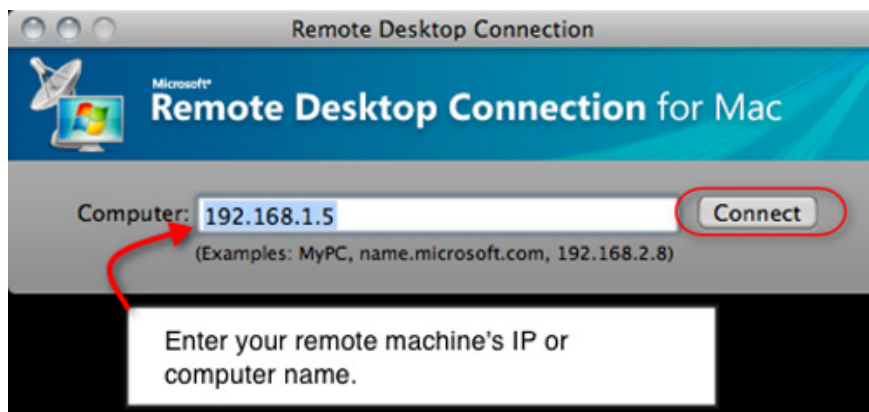
To save these settings, click *File > Save as*, select the folder to store and name the file. *rdp* that. Or if you choose *Save*, all information will be saved as *default.rdp*:



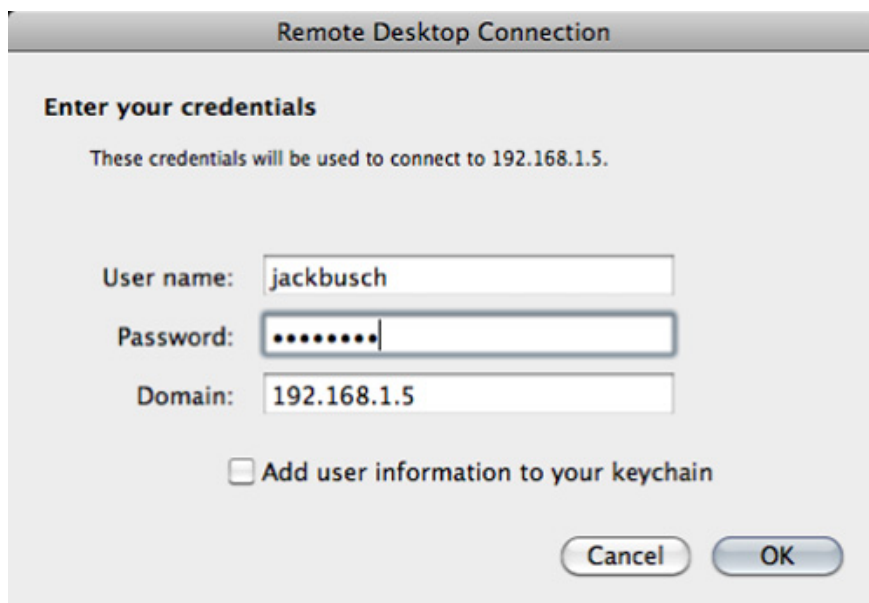
Note that if you apply changes on an open connection, you will have to *reconnect* to work.

Connecting to Windows machines using Remote Desktop Connection for Mac:

From now on, every time you start *Remote Desktop Connection* for Mac, the program will automatically download the old .rdp file. If you want to create a new connection, just enter another computer name in the *Computer* box and click *Connect* :



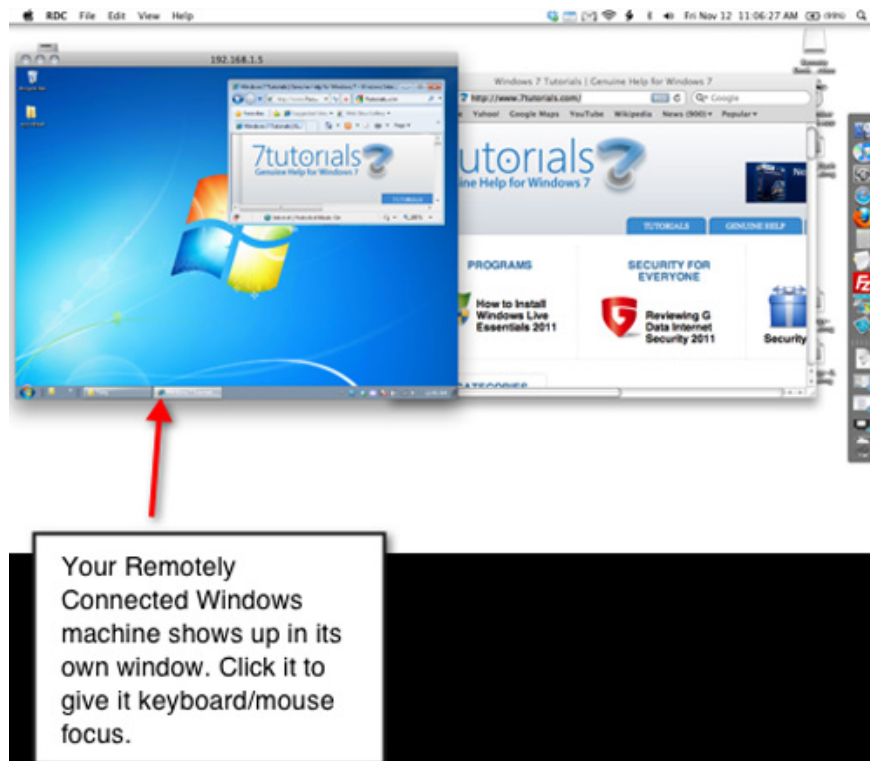
Then enter your *Windows* account username and password, declare the IP address in the *Domain* section and click *OK* :



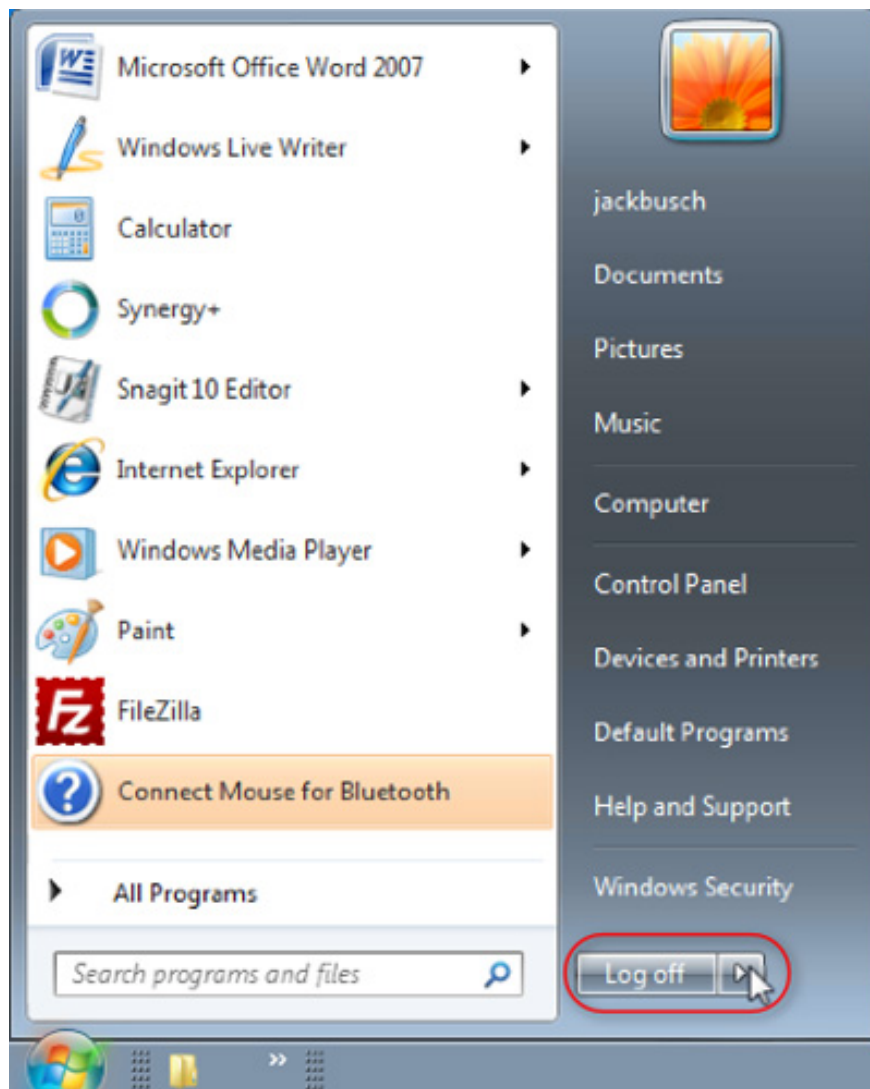
Note that if you type the IP address instead of the computer name, you may receive the following message: *The server name on the certificate is incorrect* . There is no need to worry about this message, because in this case you declare the IP address (eg *192.168.1.5*), but on the server side that is connecting to the self-identified name (eg *MY- WIN7-PC*). Click *OK* to skip this step, and select *Always connect even if authentication fails* in the *Security* tab if you do not want to display such information:



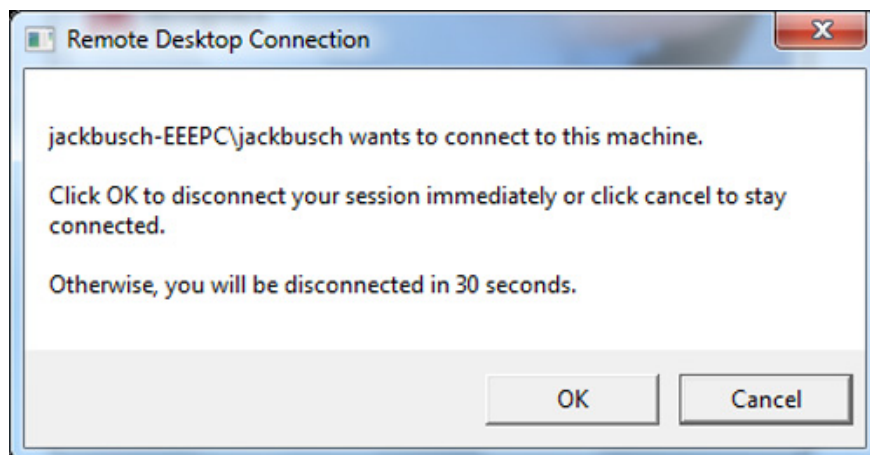
After that, you will see the window of the computer you want to control the display, press *Command - 2* to expand the window to full screen, or *Command - 1* to switch the control window to full screen mode:



At the end of the session, you can close the *Remote Desktop Connection Client* window from your Mac or select *Start > Log Off* on your *Windows* machine:



Note that if the user is logged into the server - host when you connect using *Remote Desktop Connection* , they will be logged off and cannot see the screen. Instead, they will see the Windows login screen. If they are logged in, then this remote control connection will be disconnected:



The *Remote Desktop Connection Client* feature for Mac is a great and effective way to manage Windows computers from any Mac computer, suitable for system administrators. We look forward to receiving comments

and sharing your experiences in the comments and comments section below. Good luck!

You finished reading the article "**Access and control remote Windows computers via Mac OS X system**" edited by the [TipsMake](#) team. We hope this article has provided you with many useful tech tips and tricks. You can search for similar articles on tips and guides. Thank you for reading and for following us regularly.
