

# 9 ways to open Device Manager in Windows 10

Here are 9 methods that you can use to open Device Manager in Windows 10, including using commands, shortcuts and search.

Device Manager is a useful tool that allows you to do things like: find unknown hardware devices, update drivers, disable hardware components from within the computer, etc.

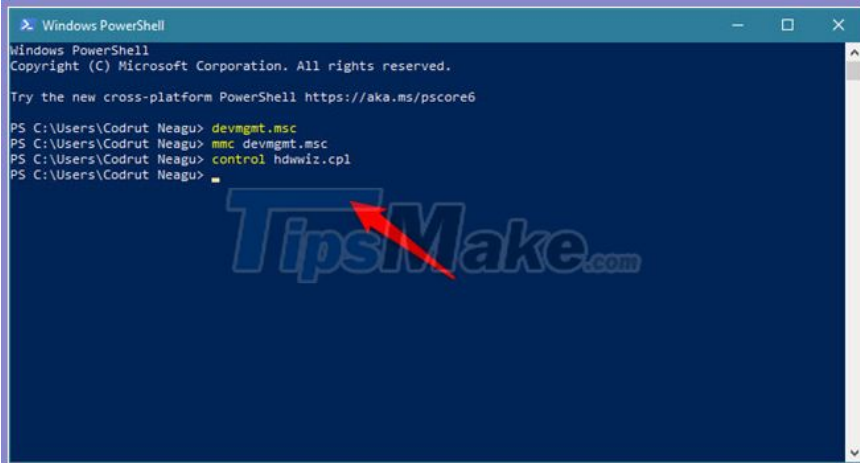
To use it, you must first know how to open the tool. Here are 9 methods that you can use to open Device Manager in Windows 10, including using commands, shortcuts and search.

## 1. Open Device Manager using Windows 10 Search

One of the fastest ways to run Device Manager in Windows 10 is to use the search box near the Start button. In it, type "**device**" or "**device manager**" and click or tap on the appropriate search result.

## 2. Start Device Manager with Command Prompt (CMD) or PowerShell

If you prefer command line environment, first open Command Prompt (also known as CMD) or PowerShell. Then, in the PowerShell or Command Prompt window, enter one of these three commands and press Enter: **devmgmt.msc**, **mmc devmgmt.msc** or **control hdwwiz.cpl** .



```
Windows PowerShell
Copyright (C) Microsoft Corporation. All rights reserved.

Try the new cross-platform PowerShell https://aka.ms/pscore6

PS C:\Users\Codrut Neagu> devmgmt.msc
PS C:\Users\Codrut Neagu> mmc devmgmt.msc
PS C:\Users\Codrut Neagu> control hdwwiz.cpl
PS C:\Users\Codrut Neagu>
```

All of these Device Manager commands work the same.

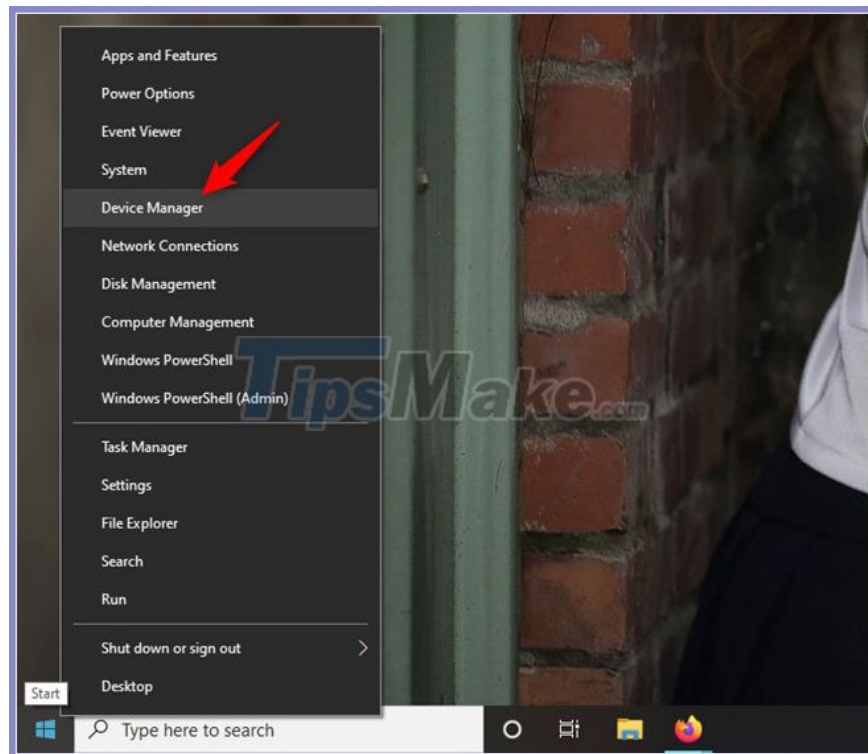
## 3. Launch Device Manager with the Run command

Open a **Run** window (press Win+ R on your keyboard simultaneously ), then enter one of the following three commands in the **Open** field : **devmgmt.msc**, **mmc devmgmt.msc** or **control hdwwiz.cpl** .

Click **Enter** or click or click **OK** , and Device Manager will open immediately.

#### 4. Open Device Manager using the WinX menu

Open the WinX menu by pressing the Win+ keys X on the keyboard simultaneously . Alternatively, you can also right-click on the Start button for the same result. Then, click or tap the **Device Manager** shortcut .



#### 5. Run Device Manager from the Devices and Printers section of Control Panel

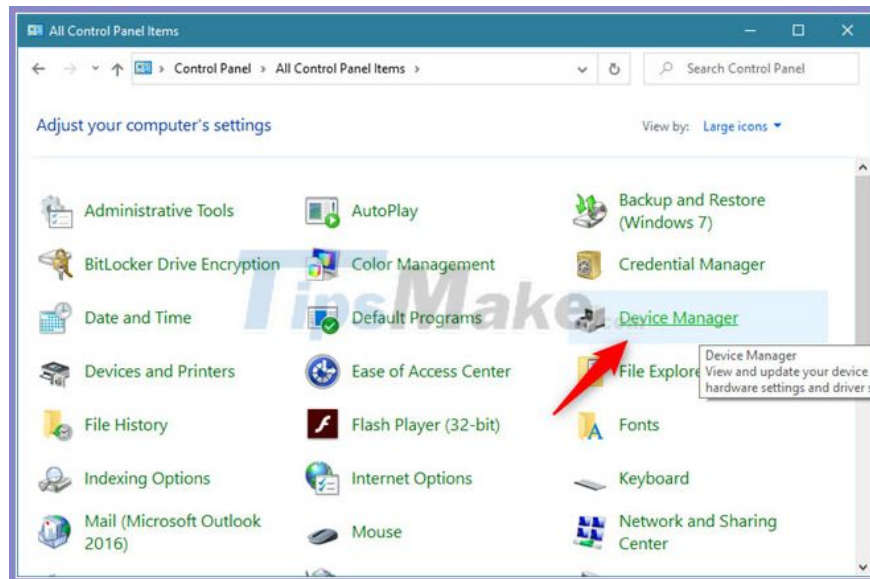
If you liked the old style Control Panel, open it and navigate to the category of **Hardware and Sound settings** . Then, click on the **Device Manager** link found under **Devices and Printers** .

#### 6. Open Device Manager from Control Panel using icon view

There is also another method to access Device Manager using Control Panel. After you open the Control Panel, click **View by Category** in the upper right corner.

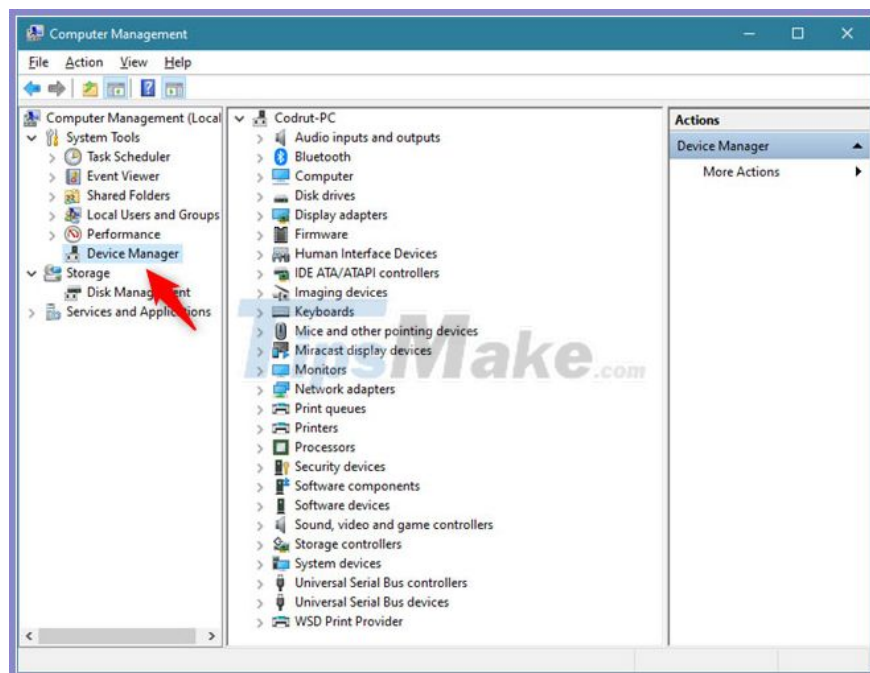
In the menu that opens, select **Large icons** or **Small icons**, depending on what you like.

You will be shown a list of shortcuts and one of them is **Device Manager** . Click it.



## 7. Open Device Manager from Computer Management

You can access Device Manager from within another Windows 10 tool, called **Computer Management** . Open Computer Management and in the navigation panel on the left, select **Computer Management> System Tools> Device Manager** .



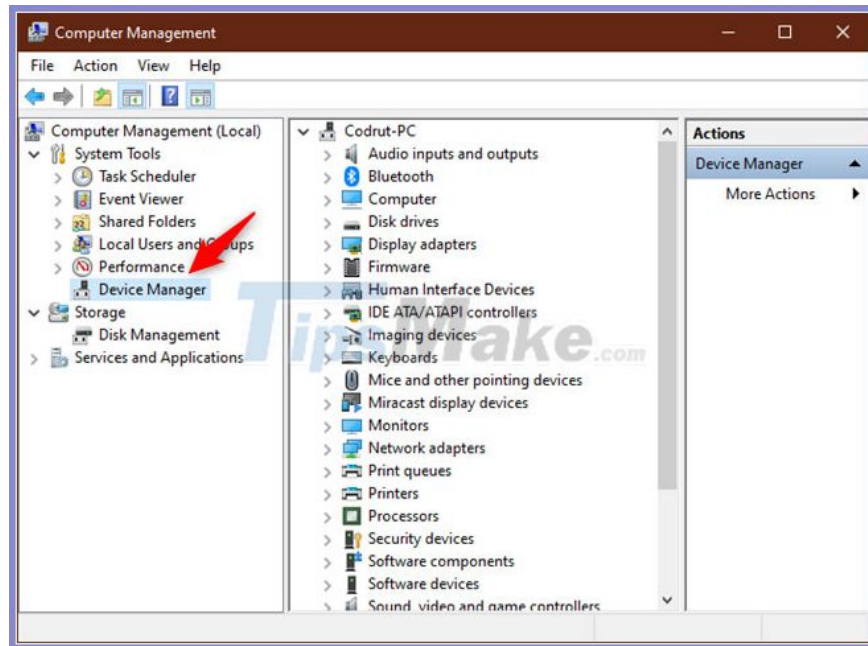
## 8. Launch Device Manager using Cortana

If you've enabled Cortana, you can ask the virtual assistant to open Device Manager directly for you. Click the tool's button from the taskbar or say " **Hey Cortana** ", then use your voice to issue a " **Open Device Manager** " request.

## 9. Open Device Manager from This PC

The last method is to use This PC. Open File Explorer and on the navigation panel from the left, right-click (or press and hold) on **This PC** . Then, click **Manage** in the context menu that appears.

That action will open **Computer Management**. All you have to do next is select **Device Manager** on the left side of the window.



You finished reading the article "**9 ways to open Device Manager in Windows 10**" edited by the [TipsMake](#) team. We hope this article has provided you with many useful tech tips and tricks. You can search for similar articles on tips and guides. Thank you for reading and for following us regularly.