

9 Ways to Fix Keyboard Typing Delay on Windows 10/11

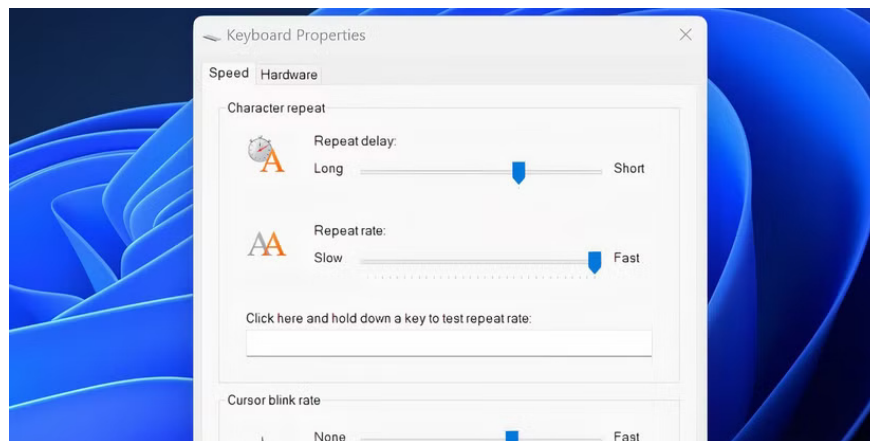
A slow keyboard can drive you crazy, especially when you're working on something important. If you're fed up with struggling with your keyboard, try these 9 methods to fix a frozen Windows 10/11 keyboard.

A slow keyboard can drive you crazy, especially when you're working on something important. If you're fed up with struggling with your keyboard, try these 9 methods to fix a frozen Windows 10/11 keyboard.

Change keyboard properties

Changing some keyboard properties can help fix the input delay. Here's all you need to do:

1. Press **Win + R** , type "**control keyboard**" into the **Run** dialog box text field , and press **Enter** .
2. There will be two options in the **Character Delay** section . **Repeat delay** adjusts the delay between when you hold down a key and the key's output starts repeating. **Repeat rate** lets you adjust how fast this output repeats.
3. Shorten **the Repeat delay** and increase **the Repeat rate** to eliminate input lag. Experiment with faster response rates.
4. Click **OK** to save and exit.



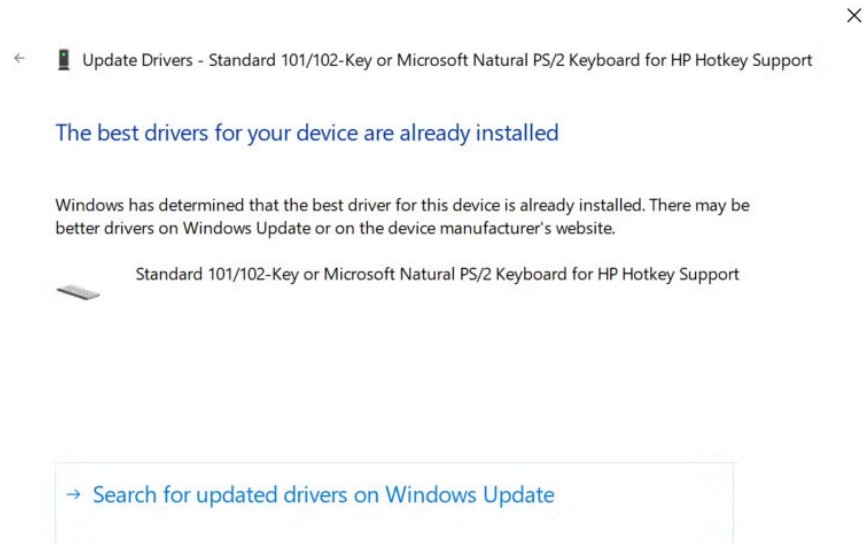
Update or reinstall keyboard driver

Drivers tell your PC how to handle external hardware like your keyboard. If your keyboard driver is out of date, your computer will have trouble communicating with the hardware and may cause delays when typing with your

keyboard.

There are a few ways to find and replace outdated Windows drivers. Here's how to update or reinstall your keyboard driver using Device Manager:

1. Press the **Win** key , type **Device Manager** and press **Enter** .
2. Right-click on the keyboard driver and select **Update driver** from the context menu.
3. Click **Search automatically for drivers** . If the system has an updated version available, the system will notify you and you can proceed with the installation.
4. Otherwise, you can select **Search for updated drivers on Windows Update** and install the updated version if available.



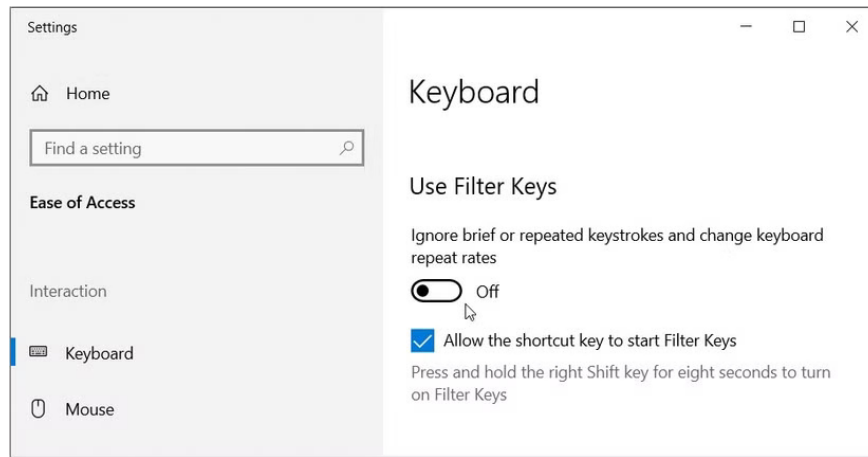
Alternatively, you can manually download the latest driver version from the manufacturer's website. Then follow these steps:

1. Repeat steps 1-3 above and select **Browse my computer for drivers** .
2. Locate and select the updated version you just downloaded and installed.

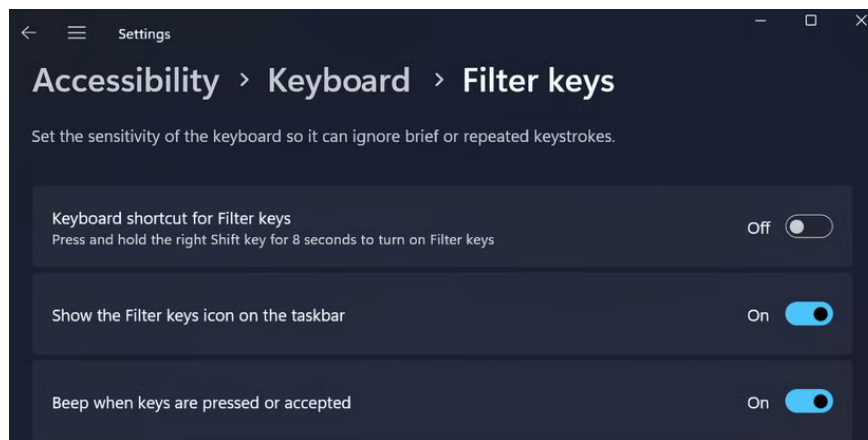
Disable Filter Keys

Filter Keys is an accessibility feature that instructs Windows to ignore short or repeated keystrokes. This could be the reason why your keyboard is slow. You can fix this by turning off Filter Keys in your keyboard settings.

1. Open Settings by searching for " **settings** " in the Start menu.
2. Select **Ease of Access** and scroll down to the **Keyboard** section from the right pane.
3. Click on **Keyboard** and look for **Use Filter Keys** .
4. Below this heading, you'll find a toggle switch. If it's on, turn it off and close the Settings app.



If you're running Windows 11, you'll find the option to disable Filter Keys in **Settings > Accessibility > Keyboard > Filter Keys** .



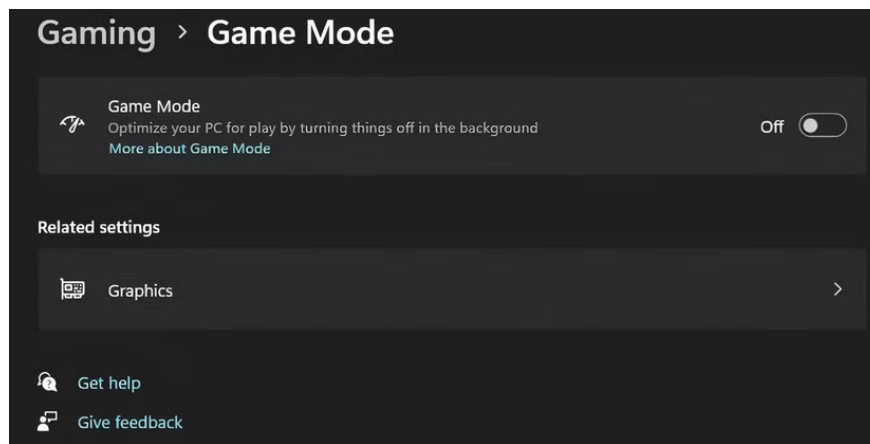
Then try typing something into a text editor and see if it's still slow.

Turn off background programs

Sometimes, multiple background programs can cause your keyboard to respond slowly. So, close any unwanted background programs from the system tray or use Task Manager to end processes you don't need right now.

Turn off Game Mode

Game Mode in Windows can also help you limit any notorious background processes while gaming. It has a history of causing input lag on Windows PCs, so it's a good idea to disable it, especially when you're not gaming.



Go to **Settings > Gaming > Game Mode** and turn off the toggle.

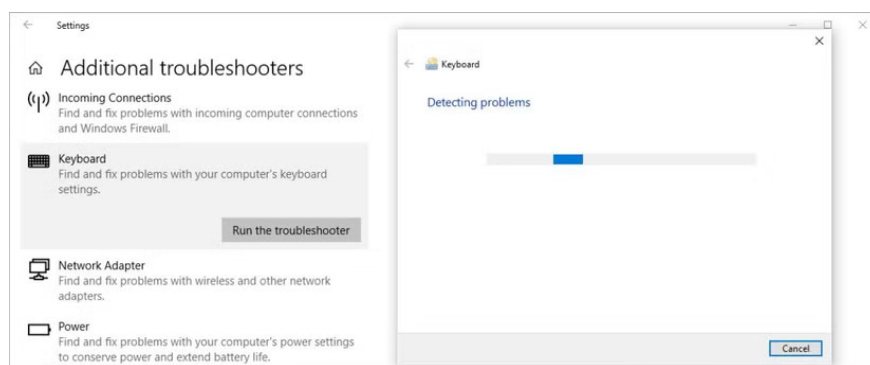
Test keyboard in Safe Mode

Safe Mode runs Windows with minimal drivers and services and is a great way to isolate hardware problems. If your keyboard works fine in Safe Mode, you'll need to reinstall the keyboard driver from the manufacturer's website. Follow these steps to boot into Safe Mode.

Using Windows Keyboard Troubleshooter

Luckily, Windows comes with some great built-in troubleshooting tools. Whether you're experiencing typing lag or your keyboard isn't working, the Keyboard Troubleshooter can provide a solution. Here's how to use it:

1. Open the Settings app and navigate to **Update & Security > Troubleshoot**.
2. Now, you should see a list of recommended troubleshooters. If not, just click on **Additional troubleshooters** and look for **Keyboard**. Click on it and select **Run the troubleshooter**.



If you're running Windows 11, you'll find the Keyboard Troubleshooter in **Settings > System > Troubleshoot > Other Troubleshooter > Keyboard**.



The troubleshooter will search for potential issues. If it finds a problem that needs fixing, go ahead and follow the instructions. Unfortunately, Microsoft plans to discontinue the Keyboard Troubleshooter this year, and the feature is now gradually being discontinued in more recent versions of Windows 11.

Perform specific fixes for wireless keyboards

The above methods apply to keyboards in general. However, some problems are specific to wireless keyboards. If your keyboard is wireless, try the following fixes.

Replace battery

Start by ruling out the possibility that the lag is caused by a dead battery. To do this, replace the battery or fully charge the keyboard. If that doesn't fix the problem, try the next solution.

Check connection

Start by trying to re-sync the keyboard to the USB receiver. If that doesn't work, plug the USB receiver into a different USB port on your computer if the current port isn't getting enough power. If possible, try moving the keyboard closer to the USB receiver.

Eliminate interference from wireless devices

If you have other Wi-Fi devices, such as a router or mobile phone, near your computer, move your computer further away and see if that eliminates the input lag.

Consider buying a new keyboard

If none of these solutions work, it could be a sign of hardware failure. Before you start searching online for a new keyboard, connect a different keyboard that works fine to another computer to confirm that hardware failure is the cause.

While you wait for the new keyboard, you can use the Windows onscreen keyboard. Search for " **onscreen keyboard** " in the Start menu and launch the most appropriate option.

Alternatively, you can use one of the many virtual keyboard apps available. If you don't like the idea of ??a virtual keyboard, you can use speech-to-text software to type, which is getting better over time.

You finished reading the article "**9 Ways to Fix Keyboard Typing Delay on Windows 10/11**" edited by the [TipsMake](#) team. We hope this article has provided you with many useful tech tips and tricks. You can search for similar articles on tips and guides. Thank you for reading and for following us regularly.