

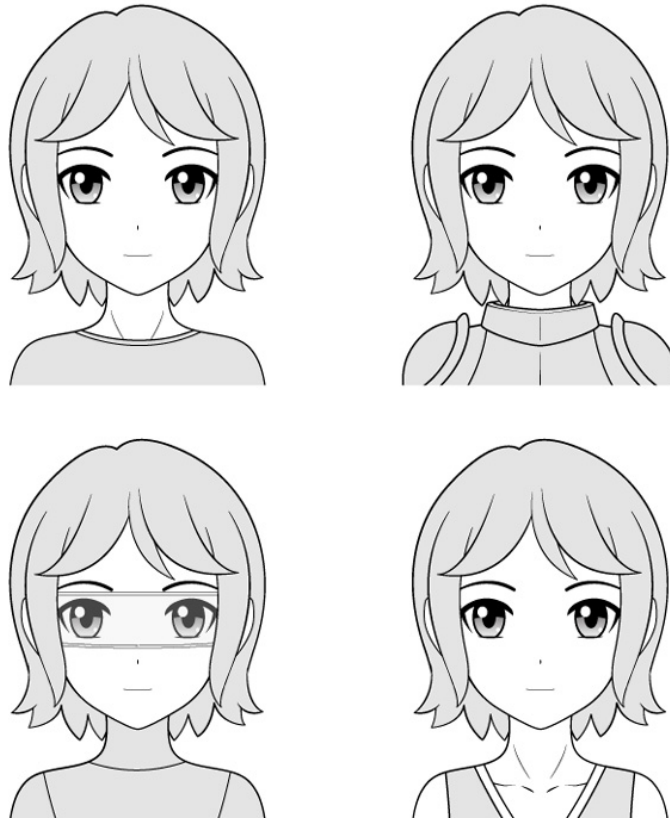
9 steps to create your own Manga - Anime series

To produce a manga - anime requires a lot of time, effort and importance is the artistic ability of the writer. However, do not let these immediate difficulties discourage you and hesitate to try.

To produce a manga - anime requires a lot of time, effort and importance is the artistic ability of the writer. However, do not let these immediate difficulties discourage you and hesitate to try. Everyone will experience an incomplete start, don't be discouraged, try to improve your abilities, Quantrimang is sure that, if you work hard and really love manga - anime, there will be no difficulties. Which way prevents you from completing your own great works.

Follow this article for **steps to plan a manga - great anime** as well as some small tips when drawing your work.

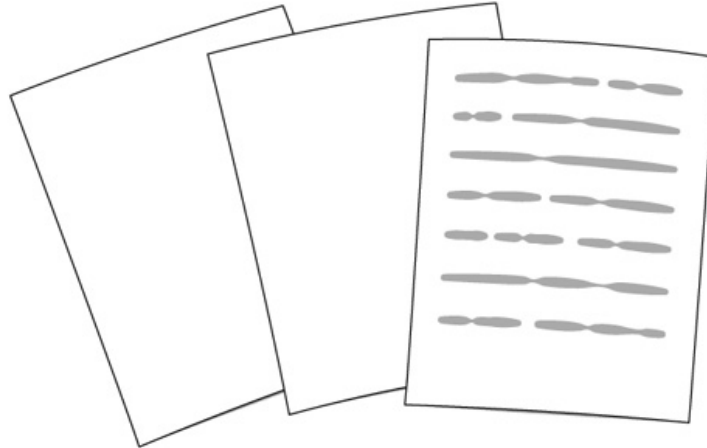
Step 1: Determine the type of story



There are many types of stories you can choose

Identify the type of story you want to draw, maybe about life, science fiction, ancient, modern .

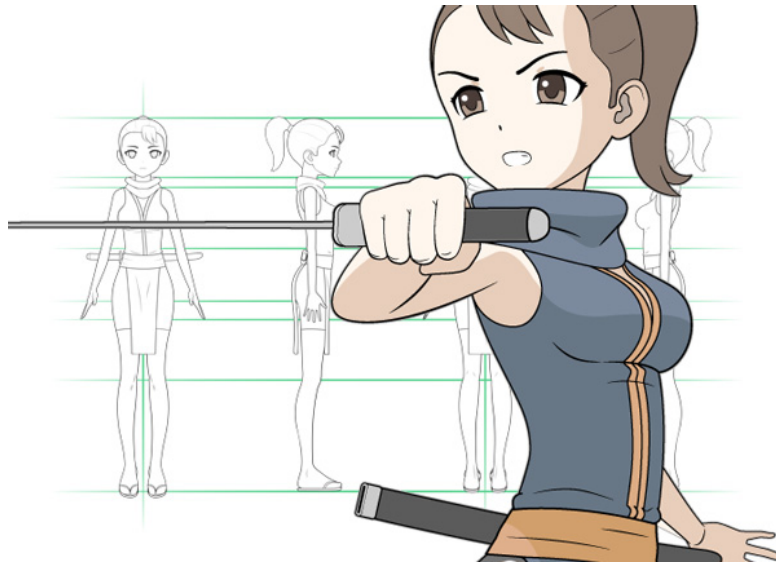
Step 2: Write a summary of your work



Write a summary

Write a basic summary for your manga, describing the main events and content throughout the story.

Step 3: Create profile and design character creation



Character design design

Write profiles for the characters in the story and design the characters for the characters. You can refer to the steps to create your own Manga or Anime character in later TipsMake.com articles.

Step 4: Determine the story context

Determine where your story will take place, in what context. For example, the genre is a fictional series, what the world in the story will be called, what characteristics it is, where the main place lies .

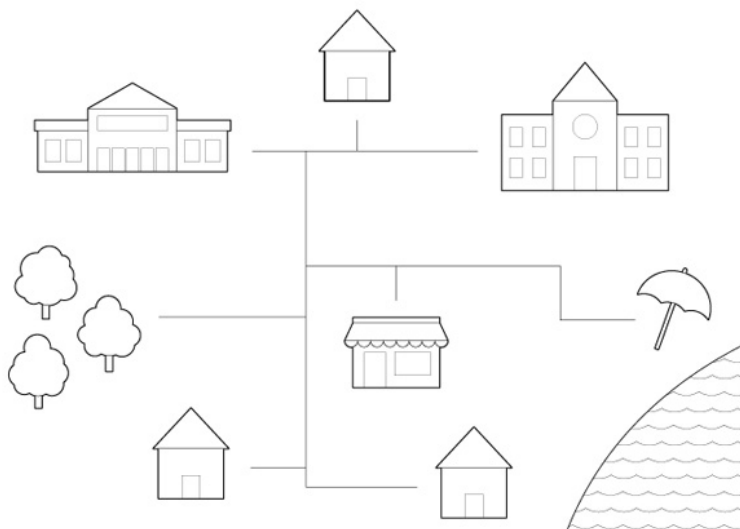
You also note that even if your stories are not fictional or science fiction, please feel free to think of untrue places for your story (country, city . not exist) in).

In addition, think about and **plan the locations where the main event will take place.**



Draw an overall world map for fantasy stories

Continuing with the fictional context context, start by drawing the world map or part of the world where the story takes place. You can use icons to represent different locations (additional notes can be added for each icon).



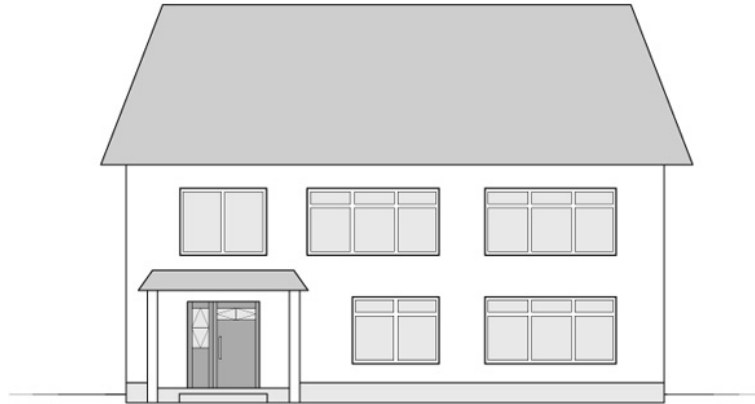
Example town map

If the context is real, instead of drawing the world map, draw a map of the city and town where the events in the story take place (this map can also be drawn for the fictional genre).

This map will **appear places like the main character's house, a friend's house, a way to work or go to school, the key locations of the story will take place** . Using simple images and symbols to draw a map and draw only places related to story lines.

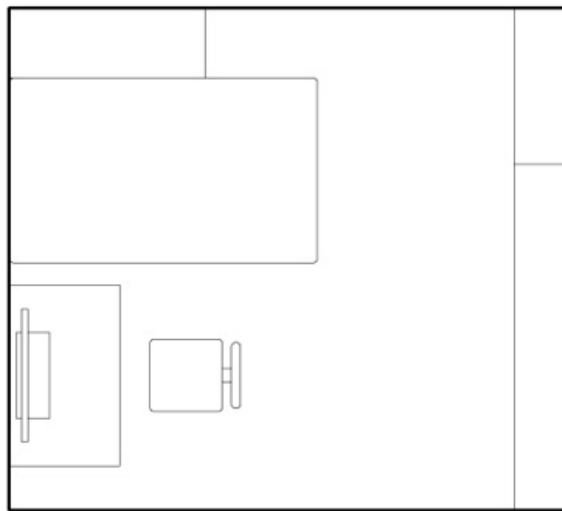
If you want to use a real city as a backdrop for your manga, use real maps and photos to get an idea.

Next, sketch out details outside these locations. Examples include street scenes, main character houses, schools .



Draw house details

Finally, you need to **sketch the scene inside the place where the story takes place** , such as the classroom, the main character's room. This will help establish the position and orientation of objects in the work (beds, cabinets, tables and chairs .).



The scene inside the room

Planning these scenes will help you avoid inconsistencies when drawing storyboards later and also help you plan the storyline. For example, when drawing characters to the beach, remember that the character must go through a convenience store first, so the character can buy some snacks on the road. This also helps you avoid forgetting the location of the store, not putting it on the way to the park in another storybook

Step 5: Determine the length of the series



Write down the main ideas, events in a story

Make a specific plan, determine how many manga you want your anime to have.

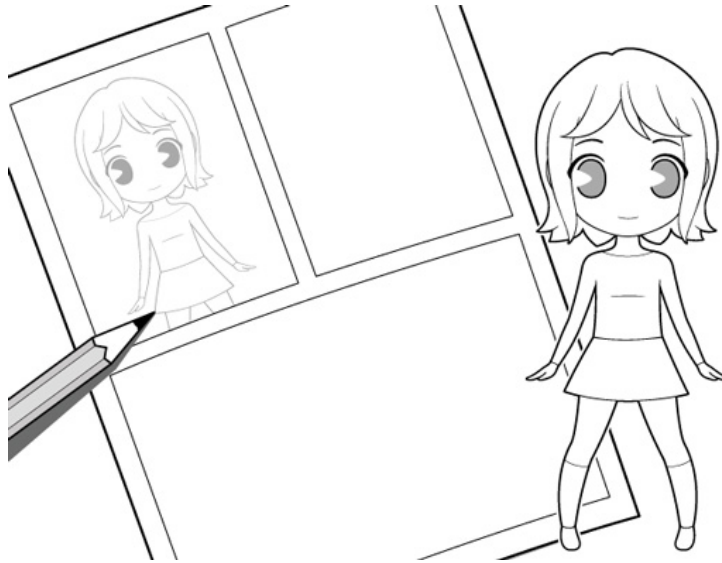
Write down the main ideas, events in a chapter , characters will appear in each episode.

For example, list things like this:

1. The main character wakes up and makes breakfast.
2. The main character goes to a friend's house and goes to school together.
3. On the way to school, the main character and you talk about .
4. When preparing for class, a new transfer student was introduced.
5. .

Notice the names of characters when writing a summary. Note clearly episode 1, episode 2 so as not to be confused. If you plan to name each episode, write it down immediately in each summary and note carefully.

Step 6: Plan each story page



Sketch a comic page using chibi characters

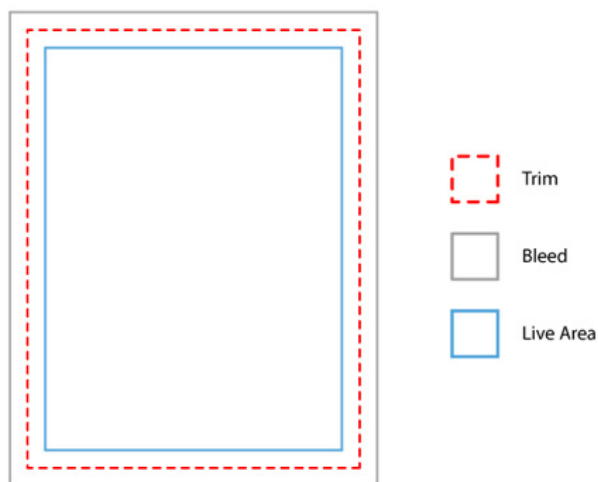
Plan each page in the chapter by **sketching** , using printing paper (usually A4). Remember **to number the page** so it won't be confused later.

You can **draw chibi shapes while sketching to speed up** (big head, small body and not much detail).

Add a conversation section for each page.

This outline you just need to do briefly, it is important to ensure the rationality in arranging the stories. Note that you may have to adjust the size of the canvas to match the actual storyboards when printing, just make sure the correct number of frames and positions are placed in the final drawing when publishing.

Step 7: Plan the printing before the official drawing is released



The Trim, Bleed and Live Area sections

Before starting the official drawing, there are a few things you should pay attention to.

If you really plan to seriously print your manga and anime professionally, **learn more about the standard print size for your work** . If you draw to practice, practice the ability and designate a simple print, you can choose it. However, it is still recommended to try to practice with the standard size, this is great for the writer himself when exposed to professional habits.

You also note that **the standard size of manga - Japanese anime may be different from the standard of another country's comic book** .

If you want to print the story, you need to pay attention to the following parts of the story page:

1. **Page Live Area:** The paper you can draw without worrying about being cut off.
2. **Page Trim:** The surrounding paper will be cut off.
3. **Page Bleed:** The part outside of the cut out section, helps ensure that the paper does not have unnecessary white border. If you want to have a colored background, or a drawing on the edge of the print media, draw the cut and draw over the bleed.

Note when printing manga - anime

You can do **more research on printing yourself**, but the tips above are what you need to pay attention to.

If you feel you **need more help** in this regard, you can **consult a graphics expert** to hear more advice. They often work with printing and are easier to find than a comic author.

Web Manga

You can also skip the process of printing and **publishing your comics online**. This is the most cost-effective and easy-to-do way today. However, you should still try and determine the standard size to print in case you want to export your storybook as text printing.

Step 8: Select the type of bubble drawing for the sentence



Speech bubble

Different types of speech bubbles can be used to emphasize the nuances of the content they represent. For example:

1. Normal speech: simple oval bubble with tail pointing towards the character
2. Angry words, shouting loudly: bigger bubbles, with jagged edges to emphasize
3. .

Different comic artists can also use different styles for this speech bubble. In general, choose a certain style and stick with it throughout your manga.

Step 9: Handshake the work



Draw lead and stroke the story

When everything is quite planned, you can start drawing your manga - anime.

Start with the pencil strokes for the drawing and then squid again. To go to the manga, you should **use a pen** , if you find it difficult to use the pen before, then practice it before going to the manga.

Finally, **scan your drawing onto the computer** and then use the editing software and clean up the story page, so don't worry if there are some small ink smudges on the paper when you focus.

It would be great if you have **a suitable tablet, pen and app** , you can draw your comics right there and don't need steps like scanning or sharpening. The above steps can still be applied even without traditional paper drawing.

Tips: Ask other people for advice

You can get some basic feedback by letting people know the character and storyline for reference or you can show them the sketch to see if it is coherent, bring interesting or not. Listen to honest feedback, accept compliments to make your series more perfect.

Sometimes it's hard to accept criticism, but if you're really serious about your work, you should be ready to listen and receive them. But remember also that not all criticisms are true and valuable. Consult many people to have a comprehensive view of your work.

If you know someone who is a painter or a professional writer, ask for the best advice from experienced people like them.

Conclude

It is true that to create a manga - anime requires a lot of time, but if you follow it here, you must be determined and persistent to accomplish this. It is important to start and participate in a specific project to plan well. Don't hurry, rush to finish quickly because you can get into trouble if you're not careful in this section, it will make you tired and depressed. Only do enough work every day and persistently complete it.

Follow the next tutorial on Manga - TipsMake.com Anime to learn more about how to draw this genre.

Good luck!

You finished reading the article "**9 steps to create your own Manga - Anime series**" edited by the [TipsMake](#) team. We hope this article has provided you with many useful tech tips and tricks. You can search for similar articles on tips and guides. Thank you for reading and for following us regularly.