

8 ways to open MSConfig in Windows 11

You can solve many problems that arise in Windows 11 with System Configuration. For example, if the game doesn't start, opening and changing the MSConfig settings can fix the problem.

MSConfig (also known as System Configuration) is a useful troubleshooting utility that has been part of Windows since 1998. You can use this useful tool to reconfigure your operating system startup, by changing startup settings and disabling (or enabling) services. That way, you can stop conflicting programs or services from starting with Windows.

You can solve many problems that arise in Windows 11 with System Configuration. For example, if the game doesn't start, opening and changing the MSConfig settings can fix the problem. Here are 8 different ways you can open MSConfig in Windows 11.

1. Open MSConfig with Run

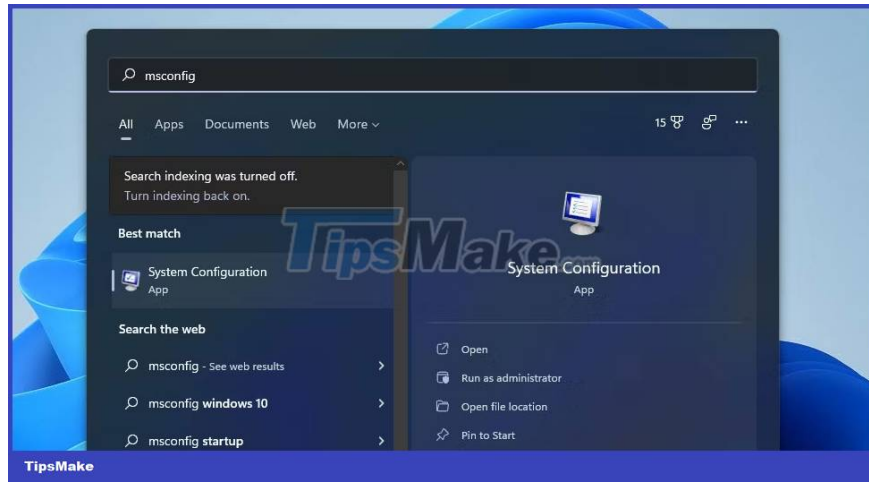
Run is a built-in utility with which you can launch many Windows tools. You can open MSConfig with Run through a quick command entry. Here is how to open MSConfig with Run.

1. First, open the WinX menu by pressing the **Win + X** key combination .
2. Select **Run** on the menu to open its window.
3. Type **msconfig** in the text box.
4. Click **OK** to open the System Configuration window.

2. Open MSConfig with Windows Search tool

The Windows search utility provides a quick and easy way to find and launch most of the built-in tools and utilities. You can find and launch MSConfig instantly with the search box. To do so, simply follow these quick steps.

1. Click the magnifying glass icon on the taskbar to display the search box.
2. Type the keyword **MSConfig** in the search box to find System Configuration.



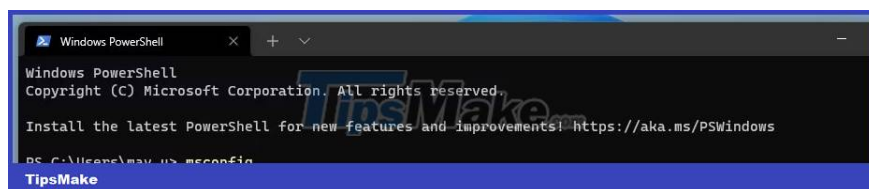
3. Click **System Configuration** in the search results to open MSConfig.

4. Or click **Run as administrator** for System Configuration on the right side of the search box.

3. Open MSConfig with Windows Terminal

Windows Terminal is an application that combines both Command Prompt and PowerShell. You can open MSConfig with both of these command line tools in the same way as with Run. If you prefer to use command line utilities, here is how you can open MSConfig via Windows Terminal.

1. Right-click Start and select **Windows Terminal (Admin)** on the menu.
2. If the UAC prompt appears, select the **Yes** option on it.
3. Click the **Open a new tab button** and select the **Windows PowerShell** or **Command Prompt** utility you prefer.
4. Then type **msconfig** in PowerShell tab or Command Prompt and press **Enter** key to open MSConfig.



4. Open MSConfig with File Explorer

Explorer is a Windows built-in file manager from which you can launch software and tools. **You can open MSConfig from its System32 folder** or by typing some text in Explorer's path box. Either way, here's how to open MSConfig via File Explorer.

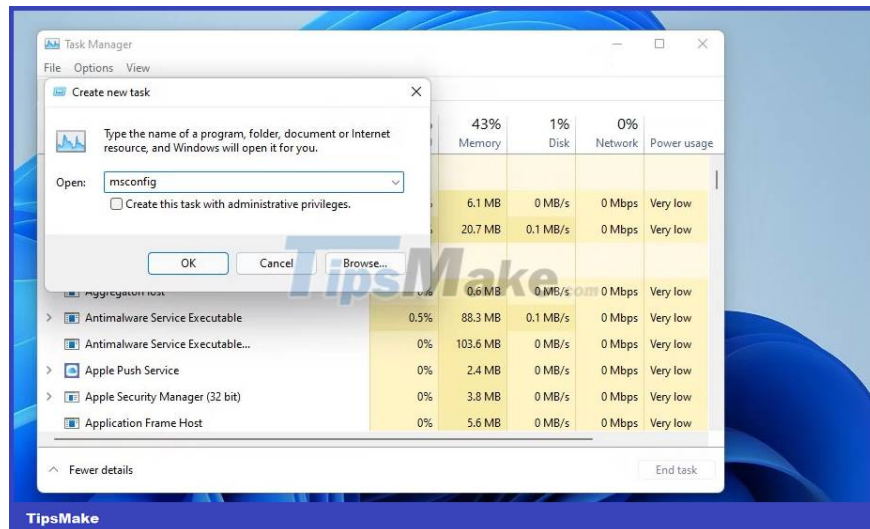
1. **Press the Win + E** keyboard shortcut to open File Explorer.
2. Click inside Explorer's folder path bar and delete any text there.
3. Then click **msconfig** in the folder path bar and press the **Return key**.

- Alternatively, open the folder of MSConfig at the path **C: > Windows > System32** . You can then click **msconfig** in that folder to open System Configuration.

5. Open MSConfig with Task Manager

Task Manager is Windows 11's system resource manager, which provides an overview of the processes. You can also open MSConfig through that utility by selecting the **Run new task** option . That option opens the **Create new task** window , which is very similar to Run. Follow these steps to open MSConfig from Task Manager.

- Open Task Manager by right-clicking Start and selecting it on the WinX menu.
- Click the **File** menu in the Task Manager.
- Select the **Run new task** option .
- Enter **msconfig** in the **Open** box there.



- You can also select the **Create this task with administrative privileges** option there.
- Select the **OK** option to display MSConfig.

6. Open MSConfig with Cortana

Cortana is the digital assistant in Windows 11 with which you can launch both third-party software and system tools. It's a pretty cool app that accepts both text and voice commands to launch software and tools. You can open MSConfig with Cortana like this.

- Click the Cortana circle icon on the taskbar.
- Type open **MSConfig** in the **Ask Cortana** box .
- Then press **Enter** key to launch System Configuration.

4. If your PC's microphone is on, you can also give voice commands by clicking the **Speak to Cortana** button . Then say '*open MSConfig*' to tell Cortana to launch System Configuration.

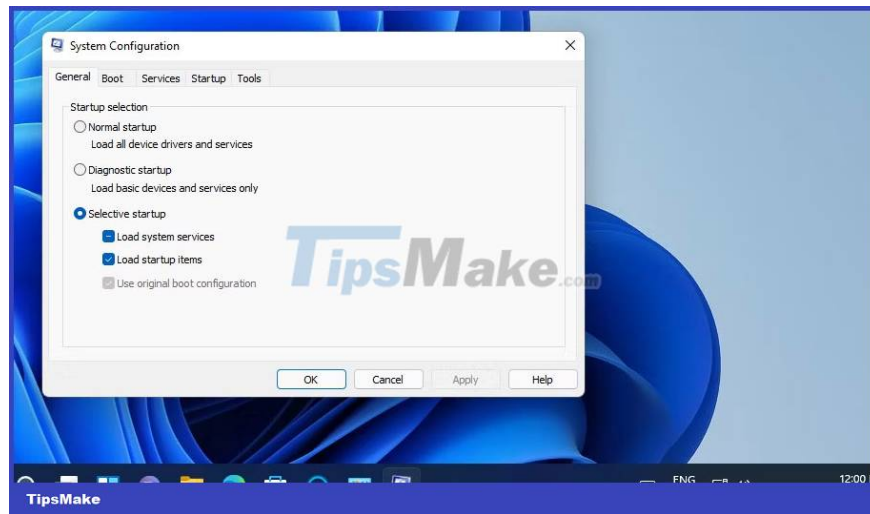


7. Set up an MSConfig shortcut on the Desktop, Taskbar, or Start menu

Setting up a desktop shortcut, taskbar or Start menu for MSConfig will give you a more direct way to launch System Configuration. Once you've set up a desktop shortcut for MSConfig, you can either move that shortcut to the taskbar or pin it to the Start menu. This is how you can set up MSConfig desktop shortcut in Windows 11.

1. Right-click an area on the desktop and select **New > Shortcut** on the context menu.
2. Type **msconfig** in the location box.
3. Select **Next** to continue.
4. Type **MSConfig** in the shortcut title text box.
5. Click **Finish** to add a new MSConfig shortcut.

You can now click the MSConfig desktop shortcut whenever you need to open System Configuration. If you want it on the taskbar, right-click the shortcut and select **Show more options > Pin to taskbar** . Alternatively, select **the Pin to Start** option to add the MSConfig shortcut to the Start menu.



8. Set up the MSConfig shortcut

Keyboard shortcuts for Windows system tools are even more convenient than on desktop shortcuts. After setting up an MSConfig desktop shortcut, you can also give it a hotkey. You can then press the System Configuration hotkey whenever you need the tool. You can set up the MSConfig shortcut as follows.

1. First, add the MSConfig shortcut to the desktop as shown in method 7.
2. Right click on the MSConfig shortcut on your desktop and select **Properties** to see the **Shortcuts** tab .
3. Click inside the **Shortcut key** box .
4. Press **M** to set the **Ctrl + Alt + M** key combination for the System Configuration tool.
5. Select **Apply** to save the new hotkey.
6. Click **OK** to exit the shortcut's properties window.

Now press **Ctrl + Alt + M** keys simultaneously to launch MSConfig. Remember that the hotkey depends on the desktop shortcut you have applied. So you will need to keep the MSConfig desktop shortcut to use the hotkey.

You finished reading the article "**8 ways to open MSConfig in Windows 11**" edited by the [TipsMake](#) team. We hope this article has provided you with many useful tech tips and tricks. You can search for similar articles on tips and guides. Thank you for reading and for following us regularly.