

# 8 ways to fix Windows Device Manager not responding error

Device Manager is a handy tool that comes with a lot of benefits. You can use it to repair device drivers, disable hardware or software devices, identify unknown devices, etc.

However, this tool sometimes fails to load and becomes unresponsive. While using Device Manager, the tool may appear an error message saying 'This app has been blocked for your protection'. Let's learn how you can easily fix Device Manager not responding error.

## 1. Run Device Manager with admin rights

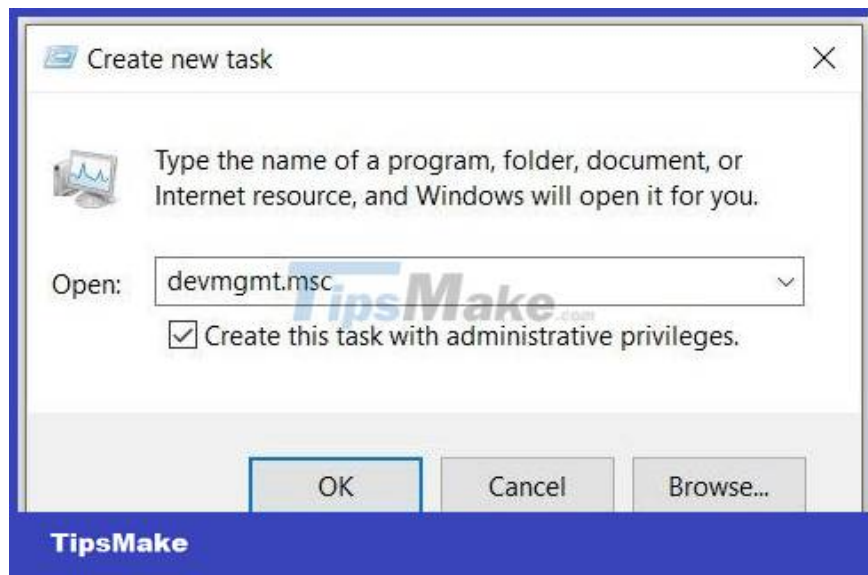
The best way to solve this problem is to run Device Manager with admin rights. Proceed as follows:

Step 1: Press Ctrl + Shift + Esc to open Task Manager.

Step 2: Click the File tab in the top left corner, then select Run new task.

Step 3: Type devmgmt.msc in the search box, then check the box Create this task with administrative privileges.

Step 4: Finally, click OK to open Device Manager.



## 2. Open Device Manager with Command Prompt or PowerShell

Device Manager may not load successfully just because you opened it incorrectly. So let's explore how you can run this tool properly:

To get started, let's see how you can run Device Manager using the Command Prompt:

Step 1: Type Command Prompt into the Start menu search bar.

Step 2: Right-click on the most relevant option and select Run as administrator.

Step 3: Type the following command and press Enter to open Device Manager:

```
devmgmt .msc
```

### **Alternatively, you can access Device Manager using PowerShell. How to do this:**

Step 1: Type Windows Powershell into the Start menu search bar.

Step 2: Right-click on the most relevant option and select Run as administrator.

Step 3: Type the following command and press Enter to open Device Manager:

```
devmgmt .msc
```

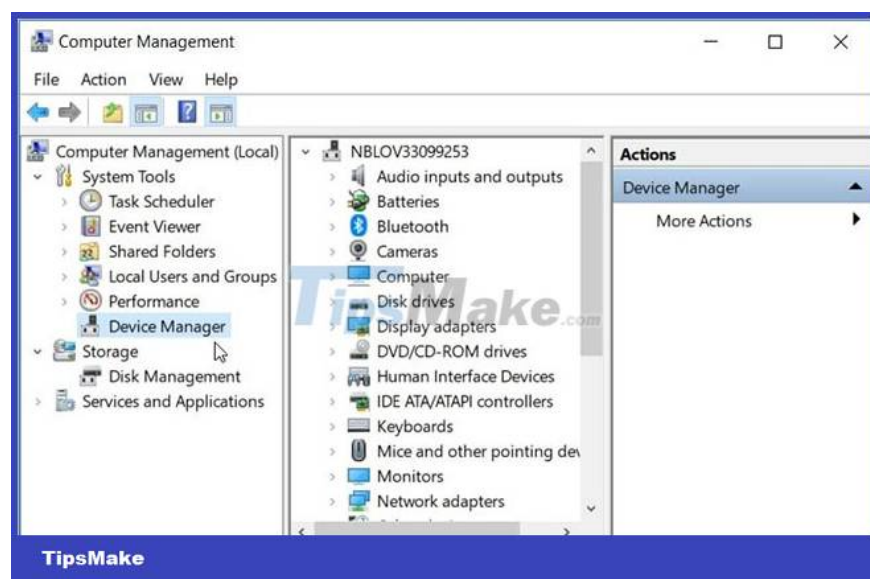
## **3. Access Device Manager with Computer Management tool**

The Computer Management tool makes it easy to access Device Manager.

Step 1: To get started, press Win + X to open the Quick Access Menu.

Step 2: Select Computer Management from the options, then click the System Tools drop-down menu.

Step 3: Finally, open Device Manager by selecting it on the menu items.



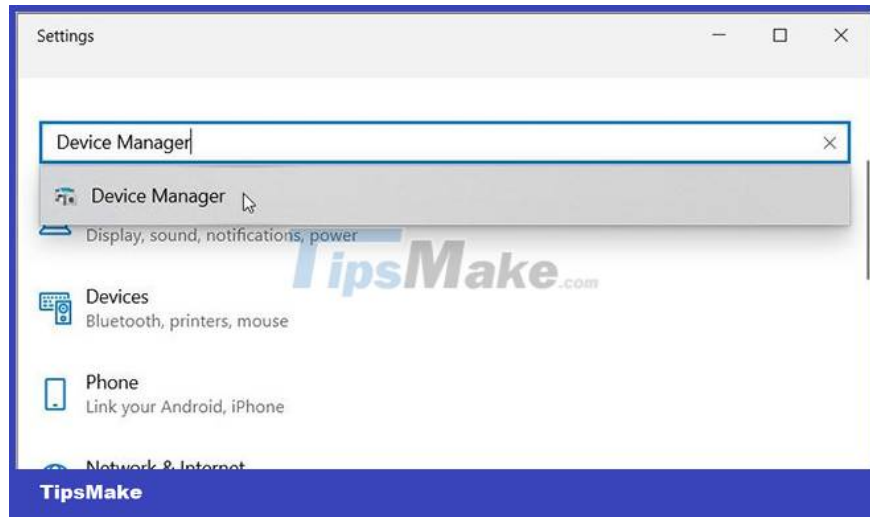
## 4. Run Device Manager using System Settings

Windows Settings has always been helpful when troubleshooting system problems. Interestingly, these settings can also help you launch different software programs.

So let's see how you can run Device Manager using System Settings:

Step 1: Type Settings in the Start menu search bar and select the best match.

Step 2: Next, type Device Manager in the Settings search bar and then select the relevant option.



## 5. Scan and repair hard drive

The article has shown some tips on how you can open Device Manager. If you still cannot access the tool, then you are probably experiencing a system error. In this case, it is necessary to eliminate those errors by scanning and repairing the hard drive.

For this method, use the Check Disk (CHKDSK) tool. This feature scans the hard drive and tries to fix all the problems it might have.

Run the scan and then restart the device to save the changes.

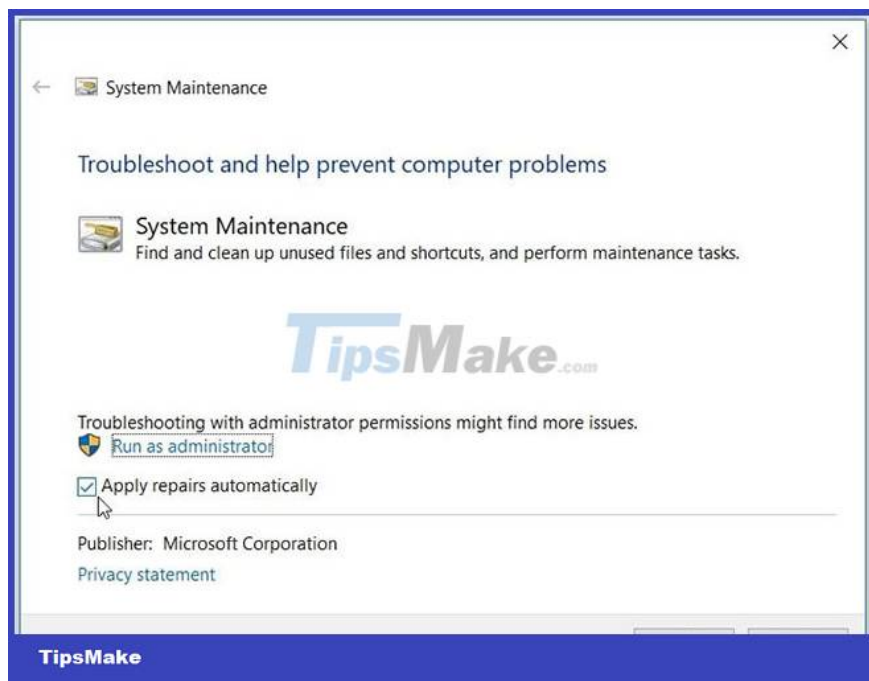
## 6. Run Windows' built-in debuggers

The built-in debugger can also help you with this. Since this could be a system maintenance issue, start by running the System Maintenance troubleshooter. Here are the steps to run the System Maintenance troubleshooter:

Step 1: Press Win + R to open the Run command dialog box.

Step 2: Type `msdt.exe -id MaintenanceDiagnostic` and press Enter to run the System Maintenance troubleshooter.

Step 3: Next, click the Advanced option, check the Apply repairs automatically box, then click Next. Follow the onscreen steps to complete the troubleshooting process.



If the problem persists, then you probably have a hardware related problem. So, try running the Hardware and Devices troubleshooter to solve the problem:

Step 1: Click the Windows Start button and select PC Settings.

Step 2: Click Update & Security, then select Troubleshoot on the left side.

Step 3: Next, click the View additional troubleshooters option on the right side.

Step 4: Select Hardware and Devices troubleshooter, then click Run the troubleshooter. Complete the process by following the on-screen instructions.

## 7. Repair Broken Microsoft Visual C++ Programs

Microsoft Visual C++ programs are some of the important features of Windows. In fact, your Windows device depends on these programs to function properly.

Now, your Windows device might be crashing right now just because these programs are broken. Therefore, repairing Microsoft Visual C++ programs can fix Device Manager errors and many other system problems.

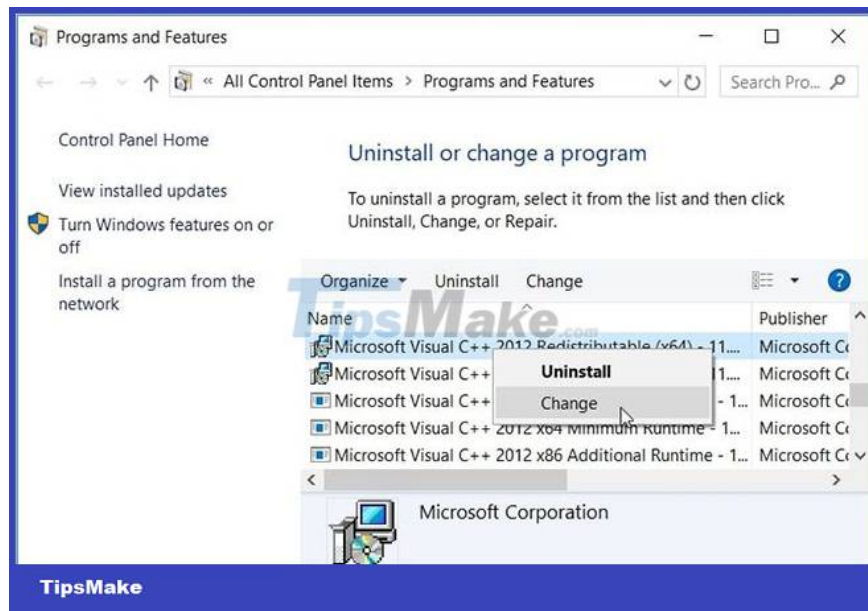
So here are the steps to repair broken Microsoft Visual C++ programs:

Step 1: Type Control Panel into the Start menu search bar and select the appropriate result.

Step 2: Click the View by drop-down menu and select Small icons.

Step 3: Select the Programs and Features option.

Step 4: Next, right-click each Microsoft Visual C++ program and select Change.



Step 5: Click Repair in the pop-up window. Finally, follow the steps on the screen and then restart the device.

If this does not solve the problem, reinstall the Microsoft Visual C++ program through the following steps:

Step 1: Open the Programs and Features window by following the previous steps.

Step 2: Right-click each Microsoft Visual C++ program and select Uninstall.

Step 3: From there, reinstall the Microsoft Visual C++ programs.

Step 4: Follow the on-screen steps and reboot the device to save the changes.

## 8. Reset Windows device

As a last resort, you can consider resetting your Windows device. But first, try to install the latest Windows updates and see if that helps.

If not, back up your data and then proceed to reset the device.

Device Manager makes it easy for you to handle various tasks on your PC. This tool also helps you to fix various system problems easily.

If you are having trouble accessing Device Manager, apply any of the solutions mentioned above.

You finished reading the article "**8 ways to fix Windows Device Manager not responding error**" edited by the [TipsMake](#) team. We hope this article has provided you with many useful tech tips and tricks. You can search for similar articles on tips and guides. Thank you for reading and for following us regularly.