

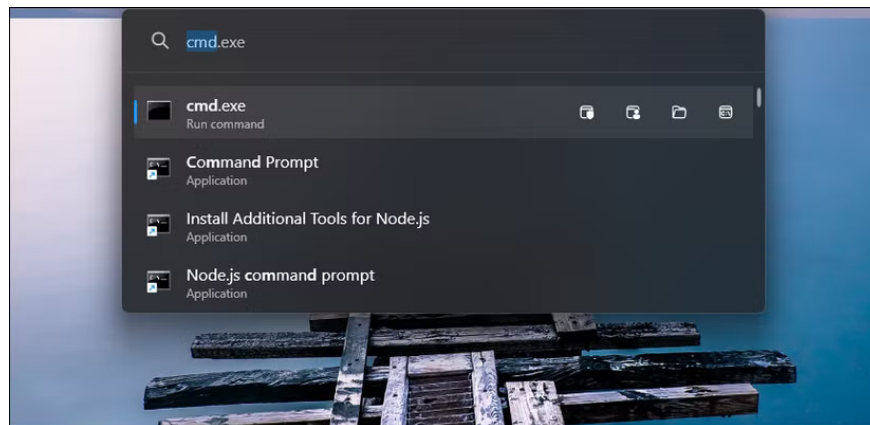
# 8 PowerToys Features Microsoft Should Include by Default in Windows 11

Some of the PowerToys features work so smoothly that you'll forget they weren't always part of Windows.

Some PowerToys features work so well that you forget they weren't always part of Windows. That's why Microsoft should stop treating them as experimental add-ons and start integrating them into the next version of Windows 11.

## 8. PowerToys Run

Windows Search is annoying. It's slow, misses obvious results, and prioritizes searching the web over your actual files. PowerToys Run ( **Alt + Space** ) is a quick launcher that can find apps, files, folders, and system settings instantly.



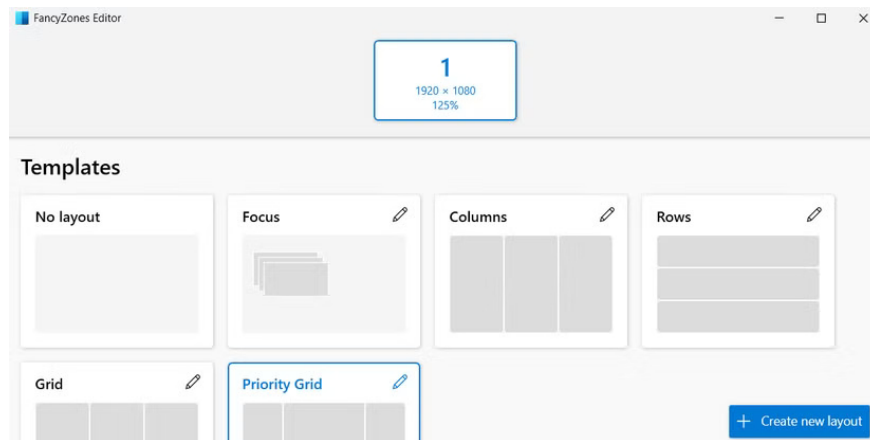
Type **exc** and **Excel** will come up first; type **reg** to open the Registry Editor . PowerToys Run also learns your habits. If you always select Excel when you type "ex", it will bring Excel to the top after a few uses.

## 7. FancyZones

Windows Snap lets you quickly arrange open application windows into different layouts. You can use the **Win** key + **Right/Left arrows** or simply drag application windows to snap them into different layouts.

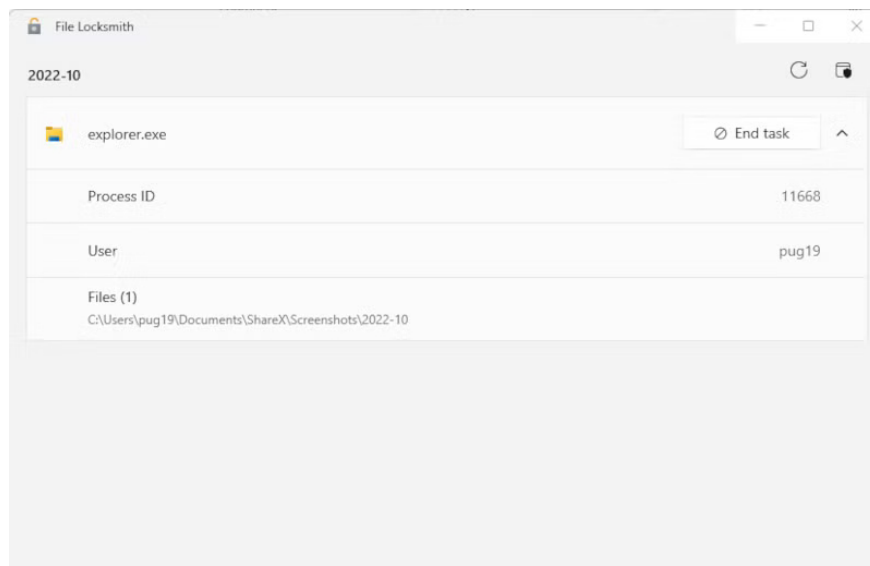
But what if you need a custom layout?

FancyZones is a window management utility that allows you to create custom window layouts to improve your workflow. Hold down the **Shift** key while dragging any window, it will snap into predefined zones.



## 6. File Locksmith

Normally, when you try to delete a file, Windows will warn you that it can't because the file is being used by another application - but won't tell you which program. File Locksmith can help you identify which application or process is using a file and even close it with a single click.



With File Locksmith enabled in PowerToys, right-click any locked file, select **Unlock with File Locksmith**, and see what processes have that file open. Click **End task** to kill the process and you can proceed with deleting the file.

## 5. Text Extractor

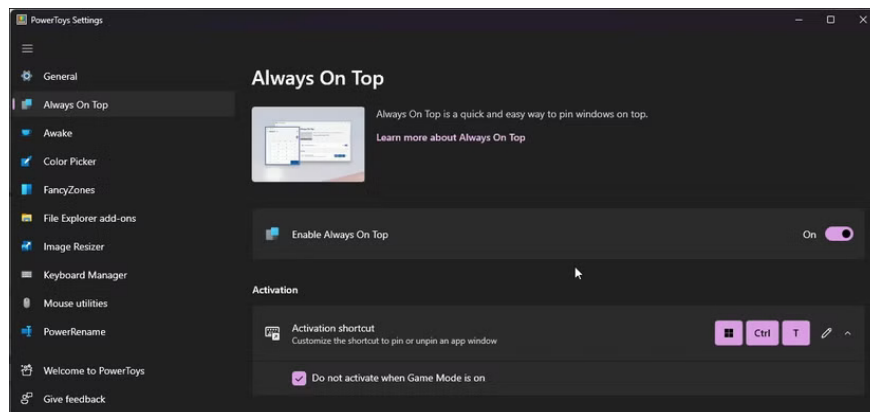


Windows 11's built-in Snipping Tool can not only take screenshots — it can also extract text from images. However, the process is multi-step and not always accurate, especially with small text or odd fonts. Instead, PowerToys Text Extractor (formerly PowerOCR) offers a faster, more reliable alternative.

To extract text, press **Win + Shift + T**, then click and drag to select an area of the screen containing text. Whether it's an image, video, or a program that doesn't support text selection, the tool will scan the selected area and instantly copy the recognized text to your clipboard.

## 4. Always on Top

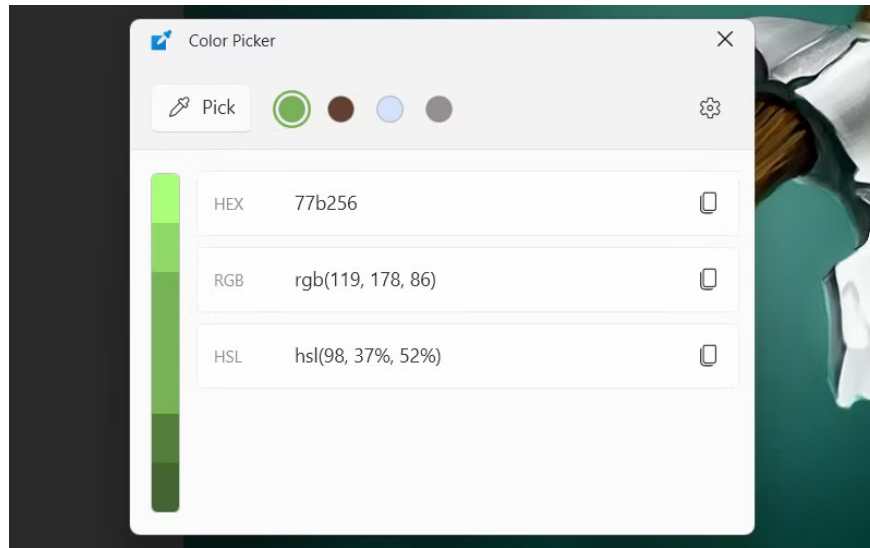
When working with multiple applications, you often need to pin a particular window so that it stays on top, no matter what else you are doing. Since Windows doesn't provide a quick way to pin any application like that, the Always on Top feature helps you do this.



Select the app you want to pin, then press **Win + Ctrl + T**. A thin colored border will show which window is pinned.

## 3. Color Picker

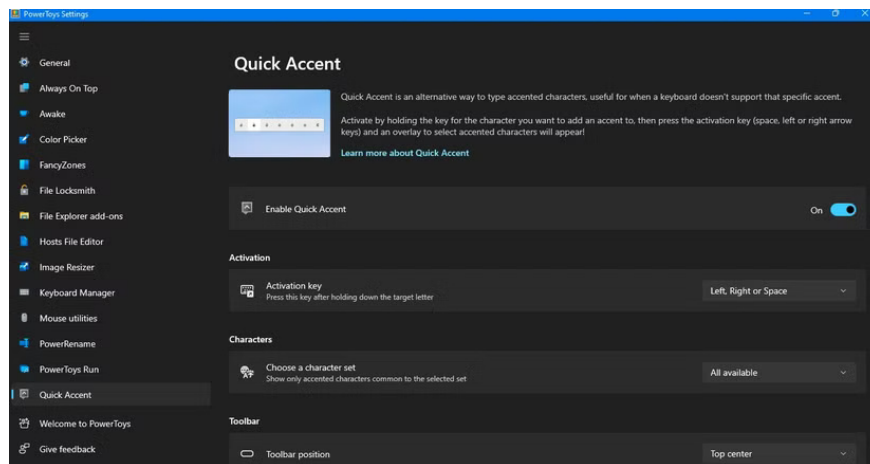
Color Picker helps you grab an exact color from anywhere on your screen — whether it's in an app, image, icon, or web page. Turn it on by pressing **Win + Shift + C**, then click any pixel to copy its color. It works with different formats like HEX, RGB, HSL, and CMYK.



The tool has a magnifying glass so you can select the exact pixel you want and automatically copies the color code to your clipboard. It also saves the last 20 colors so you can reuse them later. You can also tweak any selected color to get the perfect shade.

## 2. Quick Accent

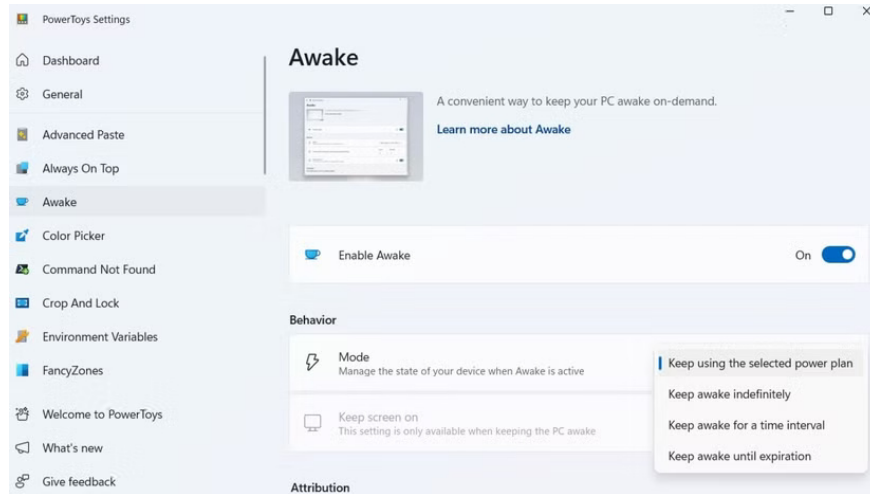
Typing loanwords like café, résumé, or piñata on an English keyboard means having to memorize Alt codes or switch keyboard layouts. Quick Accent solves this problem brilliantly – hold down any letter and press the spacebar to see all its accented versions. Then use the arrow keys to select the letter you need.



You can configure it for just the languages you use, for quick selection. The overlay will appear at the cursor, so you never lose your place.

# 1. Awake

Awake temporarily or indefinitely suspends your computer's Sleep mode without affecting your power plan. You can toggle it on/off from the system tray when you start a long download or run an overnight backup. Use it, for example, because Sleep mode disables Wi-Fi and Bluetooth until you reboot - a bug that Awake helps fix.



Awake supports three modes: Indefinitely, for a certain number of minutes/hours, or until a certain time. This makes it useful for two hours as well as keeping your computer awake until 6am for overnight tasks. You can also choose to keep your screen on or just prevent your system from sleeping. When the timer expires, standard power settings will automatically resume.

You finished reading the article "**8 PowerToys Features Microsoft Should Include by Default in Windows 11**" edited by the [TipsMake](#) team. We hope this article has provided you with many useful tech tips and tricks. You can search for similar articles on tips and guides. Thank you for reading and for following us regularly.