

# 8 port scanning tools for Windows / Linux systems

Port scanning is an important factor when you want to consider security aspects for any remote or local network.

Port scanning is an important factor when you want to consider security aspects for any remote or local network. Used by programmers and network administrators, these port scanning tools are mainly used to know which port is being used by which application, so you can identify malicious programs right away. instantly.

These port scanning tools can also be used to evaluate the power of the security policies you use.

Due to their usefulness, there are now many port scanning applications. But all these tools are not designed the same. To help you choose the right port scanner, **TipsMake.com** will introduce you to some of the best options that come with a wide range of useful features.

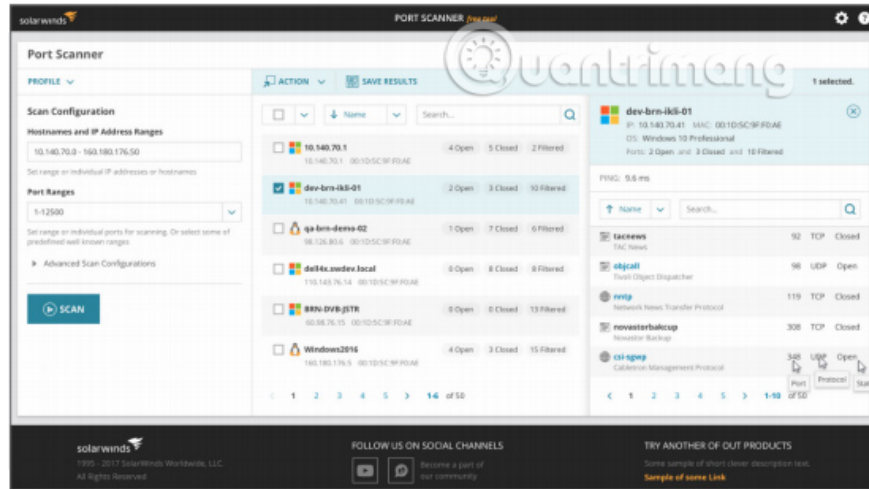
Here are a few port scanning tools that work well and make your work easier. They come with a lot of features designed to help reduce the time and effort required to scan every port in your network.

Let's review in detail the features, prices and download options for each of these tools!

## Top of the leading tools for scanning service / gate open in 2019

1. SolarWinds Port Scanner
2. Advanced IP Scanner
3. Angry IP Scanner
4. Nmap
5. NetCat
6. LanSweeper IP Scanner
7. MyLanViewer Network / IP Scanner
8. Slitheris Network Discovery

### 1. SolarWinds Port Scanner



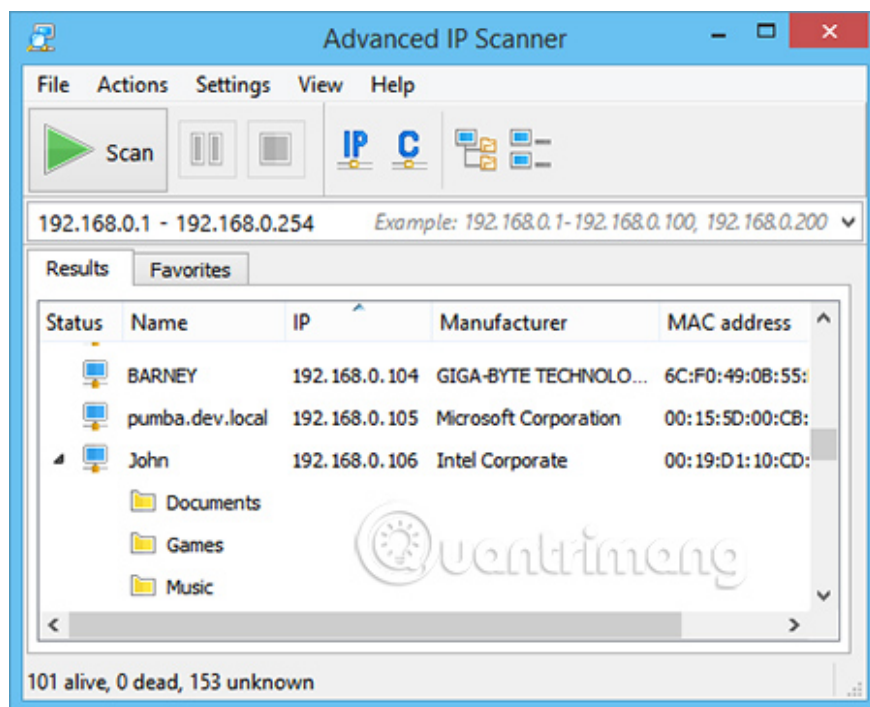
SolarWinds Port Scanner is a tool from one of the leading companies in the field of monitoring software design - SolarWinds. This tool creates a list of open, closed, and filter ports for each IP address.

The main features of SolarWinds Port Scanner are:

1. Shorten scan time by using advanced adaptive timing feature set.
2. Save scan configuration to a profile. This means that all you have to do is load the corresponding scan configuration without worrying about changing configuration settings.
3. Allows you to write a batch script that can be executed at a scheduled time and date.
4. Support troubleshooting via command line interface.
5. Provides the option to specify the DNS server you choose.
6. Resolve hostnames using the default local machine DNS settings.
7. Export scanned results to different formats, such as XML, XLSX and CSV.
8. Allows you to pause, resume or cancel the scan at any time.
9. Determine the operating system while scanning.
10. Archive defines the IANA port name in a separate file, so they can be edited at any time.
11. Works well on Windows 8, 8.1, 10, Windows Server 2012 R2 and 2016.

Download Solarwinds Port Scanner (100% free).

## 2. Advanced IP Scanner



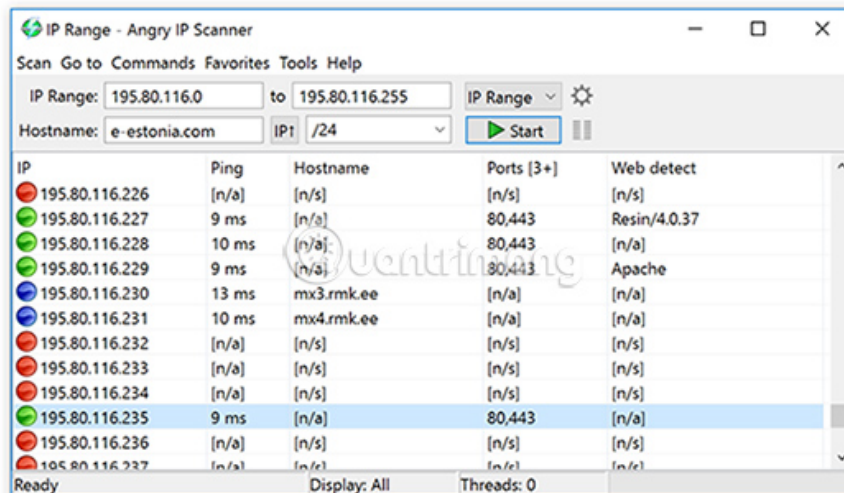
Advanced IP Scanner is a reliable network scanning tool, best used for LAN analysis. It is very easy to use and can even run as a portable version.

Here are some key features of Advanced IP Scanner:

1. Allows easy access to shared folders via the network.
2. Allows you to control the tool remotely via RDP and Radmin.
3. Automatically detect MAC address.
4. Allows you to turn on or turn off the remote computer.
5. Export scan results to CSV file
6. No installation required.

Download Advanced IP Scanner (free).

### 3. Angry IP Scanner



Angry IP Scanner is a cross-platform, open source, fast and simple network scanner.

The main features of Angry IP Scanner include:

1. Export scan results to multiple formats like CSV, TXT, XML, etc.
2. No installation required
3. Scan local networks, IP address ranges, ports and even files in any format.
4. Allows you to extend the functionality of this app with many fetcher.
5. Comes with a command line interface.
6. Start by pinging each IP address, then specify the MAC address and scan the ports.
7. Works on Mac, Windows and Linux
8. Use a multithreaded approach, in which a scan stream is created for each scanned IP address.

Download Angry IP Scanner (free).

## 4. Nmap



Nmap is a free and open source scanner that detects devices on the network and builds a comprehensive 'map'. To do this, Nmap will send special packages to the target and analyze the response.

Nmap's features are:

1. Determine the host (host) on the network.
2. List open ports on the destination server.
3. Check network services on remote devices to determine version numbers in applications.
4. Determine operating system and hardware characteristics of network devices.
5. Interact with goals using scripts through Lua programming language and Nmap Scripting Engine.
6. Many technical support for mapping devices.
7. Scan both UDP and TCP ports.
8. Ability to scan giant networks including tens of thousands of machines.
9. Support most popular operating systems like Windows, Linux, Mac, Free BSD, OpenBSD, Solaris, HP-UX, Sun OS, Amiga, etc.

Download Nmap (100% free).

## 5. NetCat

```
% echo "GET / HTTP/1.0\n" | netcat localhost 80
HTTP/1.1 200 OK
Date: Sat, 07 Jan 2006 08:43:27 GMT
Server: Apache
Last-Modified: Wed, 28 Dec 2005 08:09:31 GMT
ETag: "13c6e-14-1ea644c0"
Accept-Ranges: bytes
Content-Length: 20
Connection: close
Content-Type: text/html

nothing to see here 
% █
```

Netcat is a network utility that reads and writes data on different connections using TCP / IP.

NetCat features include:

1. Provides access to inbound and outbound connections, as well as TCP and UDP ports.
2. Comes with tunneling mode to allow special tunneling like UDP to TCP.
3. Support integrated port scanning capabilities
4. There are advanced usage options such as sending buffer and hexdump modes.
5. Provide telnet code RFC854 option for parsing and feedback.
6. Provides full DNS forwarding and reverse checking with appropriate alerts.
7. Ability to use any local source port or locally configured network source address.
8. Read command line arguments from standard input

Download NetCat (free):

<http://netcat.sourceforge.net/download.php>

## 6. LanSweeper IP Scanner

Computer: IP Address list (85)

IP	IPLocation	Assetname	Domain	OName
192.168.2.2	DHCP scope	L040	LS	Win 10
192.168.2.4	DHCP scope	Tst-w2012r2	WORKGROUP	Win 2012 R2
192.168.2.5	DHCP scope	D004	LS	Win 10
192.168.2.6	DHCP scope	D005	LS	Win 10
192.168.2.7	DHCP scope	D011	LS	Win 10
192.168.2.8	DHCP scope	L020	LS	Win 10
192.168.2.9	DHCP scope	D003	LS	Win 10
192.168.2.10	DHCP scope	D012	LS	Win 10
192.168.2.11	DHCP scope	D009	LS	Win 10
192.168.2.12	DHCP scope	D008	LS	Win 10
192.168.2.13	DHCP scope	D002	LS	Win 10
192.168.2.14	DHCP scope	D006	LS	Win 10

LanSweeper IP Scanner is a free IP scanner that uses available ports to collect and present detailed information about different applications.

The features of LanSweeper IP Scanner are:

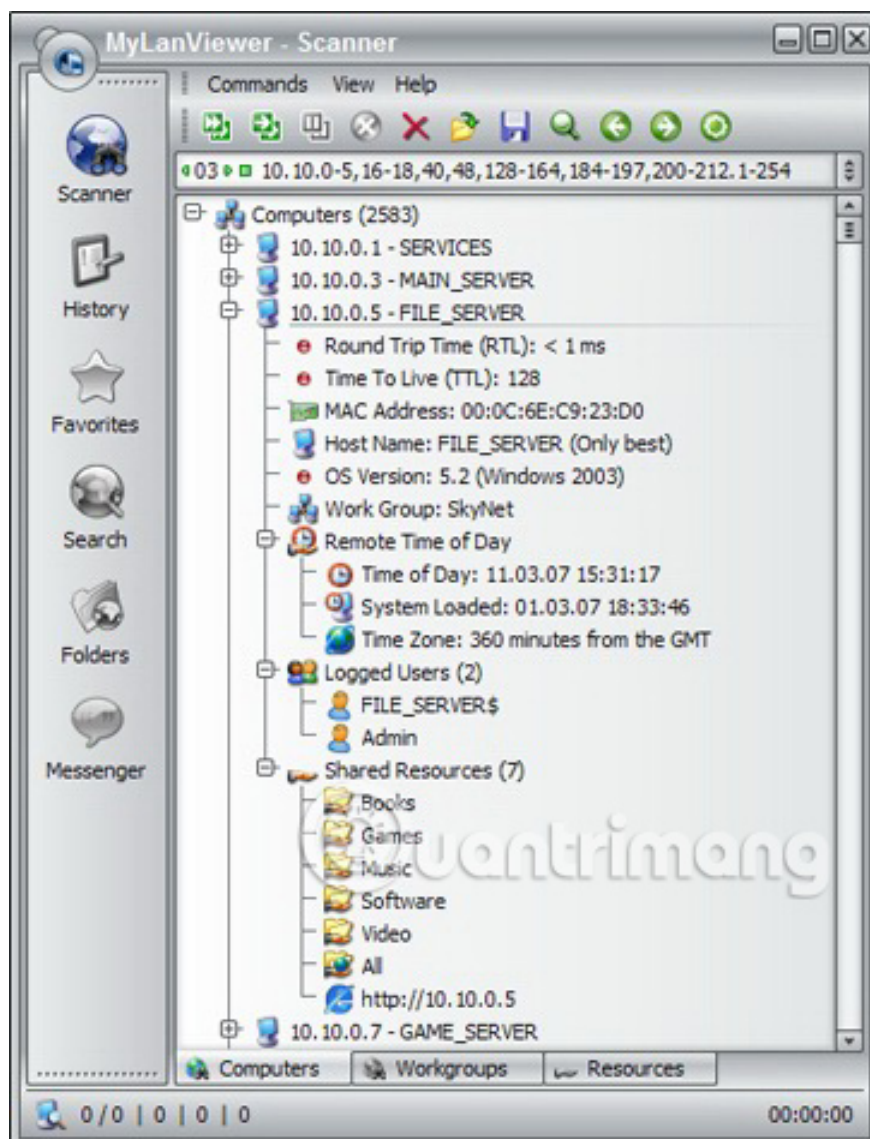
1. Comes with a user-friendly interface.
2. Collect relevant network information through WMI, SNMP, SSH, FTP, HTTP and other protocols.
3. Discover devices scanned by IP address.
4. Perform custom actions like remote shutdown, Wake-On LAN and more.
5. Scan IP ranges automatically or on demand.
6. Rediscover the entire subnet with just one click.
7. Enter your entire network settings via CSV file
8. Do not include scanning devices based on their IP addresses.

### Price :

Free for up to 100 devices and costs \$ 495 (11.500.000VND) per year for up to 500 devices. For more than 500 devices, contact support for a quote.

Download LanSweeper IP Scanner.

## 7. MyLanViewer Network / IP Scanner



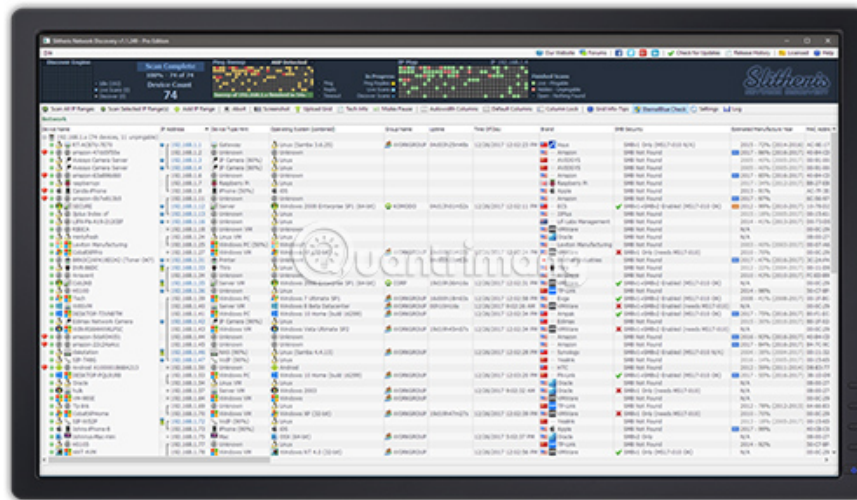
MyLanViewer Network / IP Scanner is a powerful NetBIOS and LAN / Network IP scanning tool for Windows and also performs many other functions required to fully control your network.

The main features of the MyLanViewer Network / IP Scanner include:

1. Perform remote actions like shutdown, reboot, sleep (sleep), hibernate (hibernate) and Wake On LAN (WOL).
2. Help you find all IP addresses, MAC addresses and shared folders on any wired or wireless network.
3. Track IP addresses and display computer status when they change.
4. Perform a variety of tasks such as terminating user sessions, disabling shared folders, detecting fake DHCP servers, displaying netstat information and more.
5. Keep track of all devices, including hidden devices, on your subnet.
6. Comes with a user-friendly interface.
7. Works well on Windows 2000, XP, 2003, Vista, 7 and 8.

Download MyLanViewer IP Scanner (free).

## 8. Slitheris Network Discovery



Slitheris Network Discovery is a network scanning tool, which helps identify and scan different devices on the network.

Features of Slitheris Network Discovery include:

1. Gather information from devices without the need for authentication or agent (agent).
2. Provide lots of information about each device / application.
3. Determine the type of device by collecting a lot of attributes about every device and compare them with the device definition database.
4. Use advanced algorithms to determine the year in which a device is manufactured.
5. Determine whether SMBv1 or SMBv2 is enabled and if so, give the option to disable SMBv1 for security reasons.
6. Use ARP cache to identify hidden devices that are not responding to ping.
7. Allows you to view devices with GUI and give you instant access on the browser.
8. A portable version is available.

Price:

Free for up to 50 devices, \$ 195 (4,528,000 VND) for up to 256 devices, \$ 295 (6,850,000 VND) for up to 1000 devices and \$ 395 (9,173,000 VND) for unlimited devices.

Download Slitheris:

[http://www.komodolabs.com/downloads/slitheris\\_installer.exe](http://www.komodolabs.com/downloads/slitheris_installer.exe)

In short, port scanning is an important part for network administrators because they help gather information about devices, to understand their operation, security, and more.

They support identifying open ports and vulnerable systems, potentially causing potential leaks to your infrastructure.

You should choose one of the downloads from above and test it on your network. Some programs have nice interfaces that allow easy scanning and other options with more complex, advanced command line tools, accept advanced operators and more!

Hopefully the above information will help you choose the appropriate port scanner for your network!

You finished reading the article "**8 port scanning tools for Windows / Linux systems**" edited by the [TipsMake](#) team. We hope this article has provided you with many useful tech tips and tricks. You can search for similar articles on tips and guides. Thank you for reading and for following us regularly.