

8 Best Tools to Test SD Card Speed ??and Capacity

Unfortunately, there are a lot of fake SD and microSD cards floating around the internet. Even reputable sites like Amazon are no exception. Here are the best tools to test SD card speed and capacity.

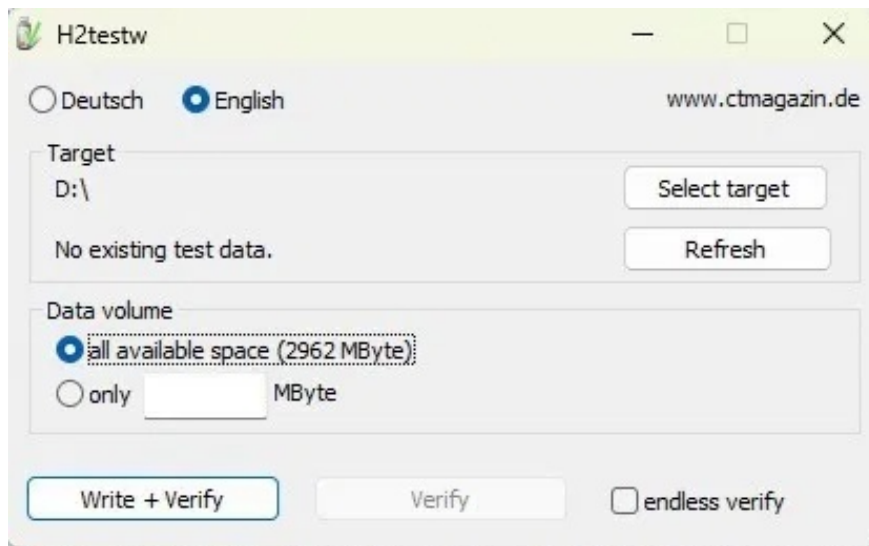
SD and microSD cards are used for storage in a variety of devices, but unfortunately, there are a lot of fake SD and microSD cards floating around the Internet . Even reputable online marketplaces like Amazon are not immune to the proliferation of useless cards being sold to unsuspecting consumers. That's why you need a fake SD card test to avoid being scammed.

1. H2testw

Platform: Windows

H2testw has been around for a long time, and for good reason. This trusted tool tests the actual capacity of your SD/microSD card as well as its read/write speeds. The latest update has fixed an issue the tool had with larger capacity devices.

H2testw was originally developed by a German software engineer. As a result, the website that hosts the fake SD card testing software, as well as the software itself, are both in German. When you launch H2testw, select either German or English as your language. Click **Select target** , set the capacity to test, and decide whether you want to write and verify or just verify.

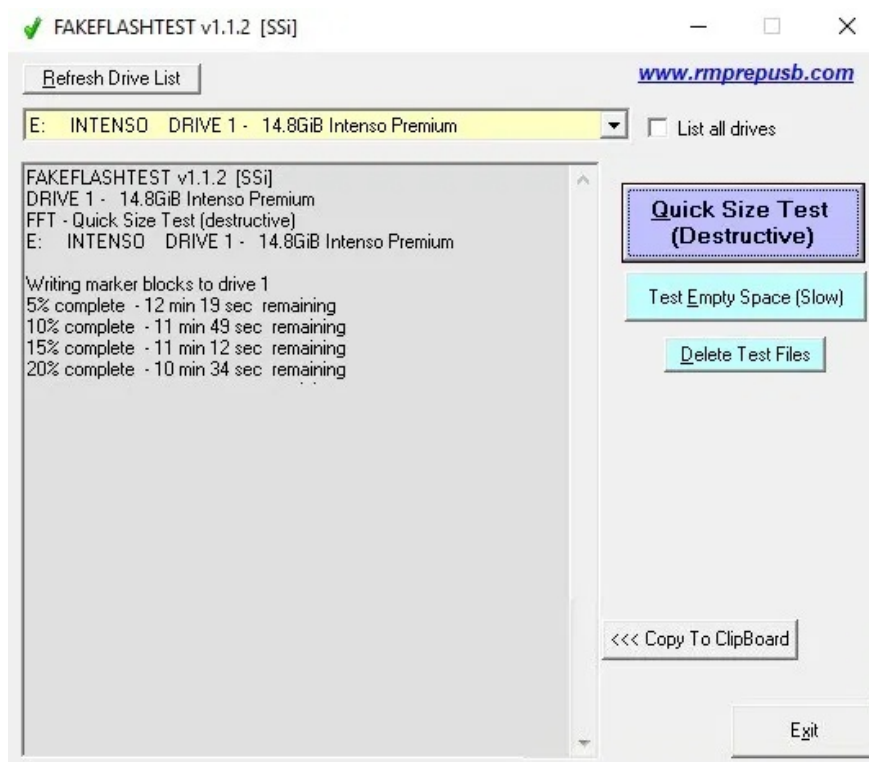


Please note that this tool will overwrite existing data, so please backup your files and format before running the test.

2. FakeFlashTest

Platform: Windows

If you're looking for something a little faster than H2testw, consider FakeFlashcopy overTest. FakeFlashTest is similar to H2testw in that it writes data to your SD card to determine its read/write speeds and capacity. However, FakeFlashTest speeds up the process of testing fake SD cards by offering a "Quick Size Test". This function writes and reads 512 bytes of data to random sectors on the card, making it a faster and better test for larger drives.

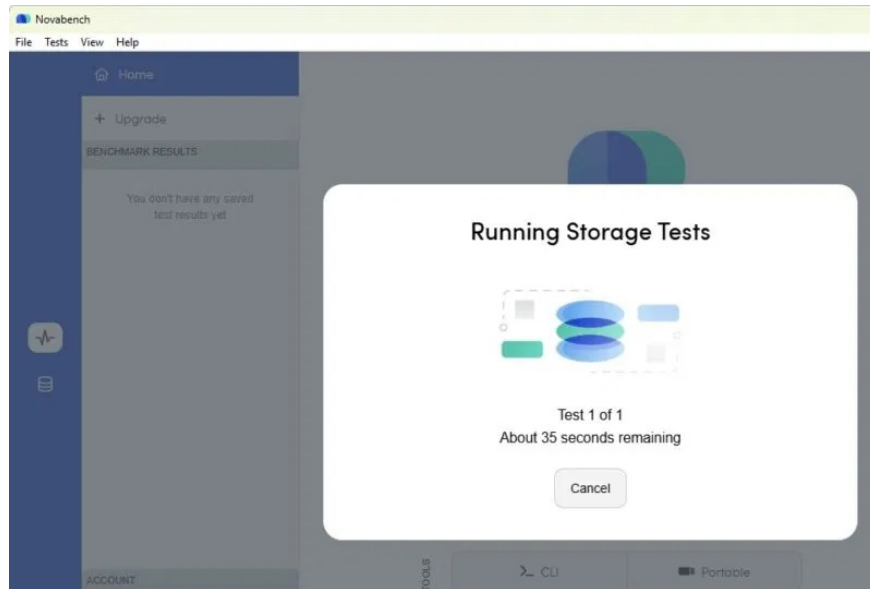


Tap **Quick Size Test** for a quick test. This will erase all data on the card, so back it up first. Use **Test Empty Space** to test without erasing data.

3. Novabench

Platform: Windows / Mac

Novabench is a benchmark tool for your entire computer, not just storage. While there is a premium version, the free version lets you run basic tests. That's more than enough to run a quick SD card test. The default is to run a full benchmark. Alternatively, click the arrow next to **Start All Benchmark Tests** and select **Storage**. Select your drive and start the test.

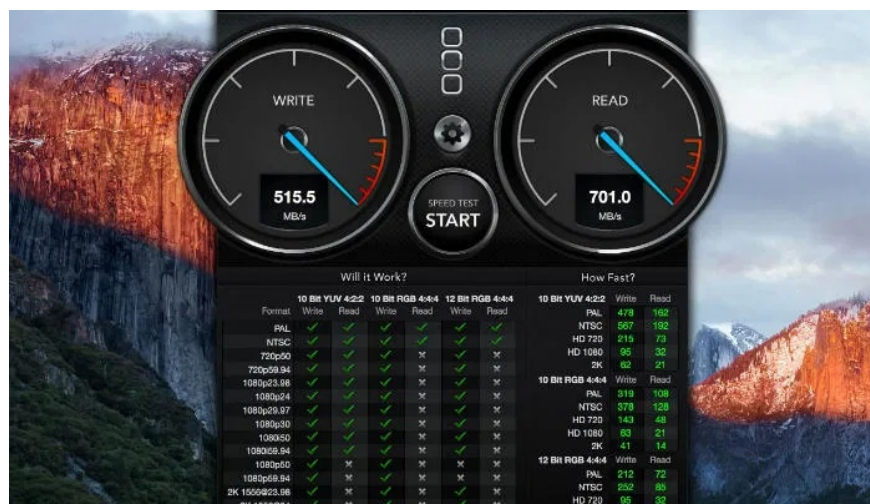


Check the results to determine if your SD card is valid. Small changes, especially on older cards, can simply mean the card is faulty.

4. Blackmagic Disk Speed ??Test

Platform: Windows / Mac

If you're a Mac owner and want to verify your SD card, Blackmagic Disk Speed ??Test is for you. This free utility is designed to test the speed of larger drives; however, it will also work as a fake SD card test. The only downside is that Blackmagic Disk Speed ??Test is designed for people working with large files, such as video clips.



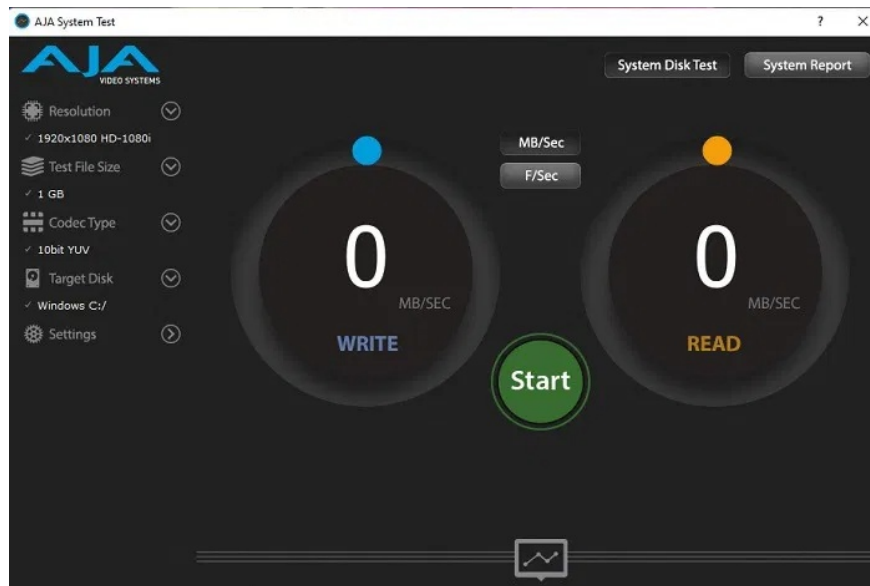
As a result, the app writes large chunks of data to the storage device and then reads that data to verify performance. Unfortunately, this means the test takes a long time to complete. If you need to format your SD card first on your Mac, follow these steps.

For Windows users, you will need to download the latest Desktop Video software and run the Disk Speed Test bundled with Blackmagic Design.

5. AJA System Test

Platform: Windows / Mac

AJA System Test is a free SD card speed test for both Windows and Mac. Not only is it easy to use, it also provides detailed graphs to see if performance is consistent. If there are large fluctuations, there may be a problem with the card. Of course, if you're testing an older card, this could also be a sign that it's starting to fail.



If you have a new SD card, you won't see any major fluctuations and the speeds will match what is advertised. Small fluctuations in the graph are normal as the speed changes as files are added. Hit **Start**, choose the size of data to write to the card (it's recommended to use a blank SD card to avoid data loss) and run the test.

When you install this application, you don't need to install all the components and drivers. Just the core application.

6. Speed Test Out

Platform: Windows / Mac

Speed Test Out is a super simple portable SD card testing tool. All you have to do is download it and run it directly from the folder. The tool writes temporary files to your SD card to determine the read and write speeds. Select the drive, click **Start** and get the results.

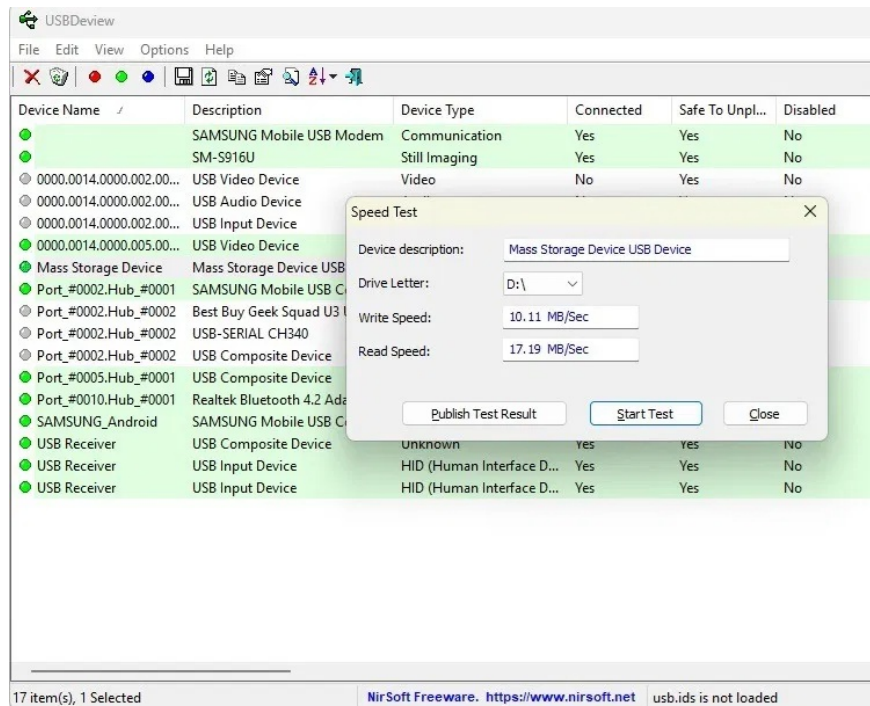


If you want to get more granular, this probably isn't the best tool to use. However, if you want to save something to a flash drive for use on multiple computers, this is a great option. The one downside is that you may get inaccurate results when using a USB 2.0 port. Speed ??Out recommends only using USB 3.0-compatible SD card readers. Consider USB-C adapters to ensure your USB card reader will work on most devices.

7. USBDeview

Platform: Windows

USBDeview is a small portable SD card testing tool from Nirsoft. It instantly detects all USB and SD devices connected to your PC. To test the speed, right-click on your SD and select **Speed ??test** . Confirm the drive letter and press **Start test** .



This tool reads and writes a 100MB file to determine the speed. It is a very simple tool but works well for speed tests.

8. True SD Card Capacity & Speed

Platform: Android

The name isn't very catchy, but True SD Card Capacity & Speed ??does its job well. This tool is only available for Android devices. If you don't have a desktop or laptop, this is the perfect tool to quickly test your SD card. The simple design guides you step-by-step on how to use it and how it works.

True SD Capacity/Speed Test

This app tests your memory card's storage capacity and speed by making large files and then verifying their contents. A bad card will fail to store some of the data written and can even become unreadable.

Acknowledgement of the following risks is required:

- While this is no more dangerous than copying a bunch of large files to your card, the card could fail during testing. You have nothing on it you want, right?
- I understand this test could make my card unreadable.
- In the very unlikely case that my card stops working I will NOT hold the authors of this software responsible.

Step 1: Configure

Select storage device to test (typically the 1st item is internal storage and the 2nd is the SD card):

/storage/emulated/0
(225.3GB total, 60.9GB free)

Percentage of space to test:

100%



100 percent' is the default, but very low quality cards will fail before that. You can start with a smaller percentage and then later increase it without losing your progress.

Step 2: start or resume writing data to card

Write data to card!

Step 3: verify any data already written.

Begin verification!



After reading the warnings, select your SD card and follow the steps in order. As the app warns, please leave the screen on while the tests are running. It is recommended that you format the SD card first to be safe. If you encounter problems, try the following tips .

You finished reading the article "**8 Best Tools to Test SD Card Speed ??and Capacity**" edited by the [TipsMake](#) team. We hope this article has provided you with many useful tech tips and tricks. You can search for similar articles on tips and guides. Thank you for reading and for following us regularly.