

7 ways to fix 'Invalid Value for Registry' error when viewing photos on Windows

While viewing images using Photos application, users may encounter an Invalid value for registry error. The problem can happen with any file, but is most common with JPG, JPEG, and PNG images.

Microsoft Photos is the default photo viewer on Windows PCs. You can use it to quickly view image files or view all the pictures saved on your computer.

However, while viewing images using the Photos app, users may encounter an "Invalid value for registry" error. The problem can happen with any file, but is most common with JPG, JPEG, and PNG images.

Here are all effective solutions to fix the problem.

What causes the "Invalid value for registry" error for Windows Photos?

The "Invalid value for registry" error is common among users who have recently downloaded the latest Windows build. Turns out, if the Microsoft Photos app is out of date, you might have this problem. However, this is not the only cause of the error message.

Here are all the other 'culprits' that cause the "Invalid value for registry" error:

Step 1. An error message may appear if there is any kind of error in the Microsoft Photos app.

Step 2. Errors in system files can also be the cause of this error.

Step 3. And finally, misconfigured registry setting is another common reason behind this problem.

Now that you know all the main culprits behind the problem, let's take a look at the available fixes.

How to fix "Invalid Value for Registry" error when viewing photos on Windows

1. Reboot the system

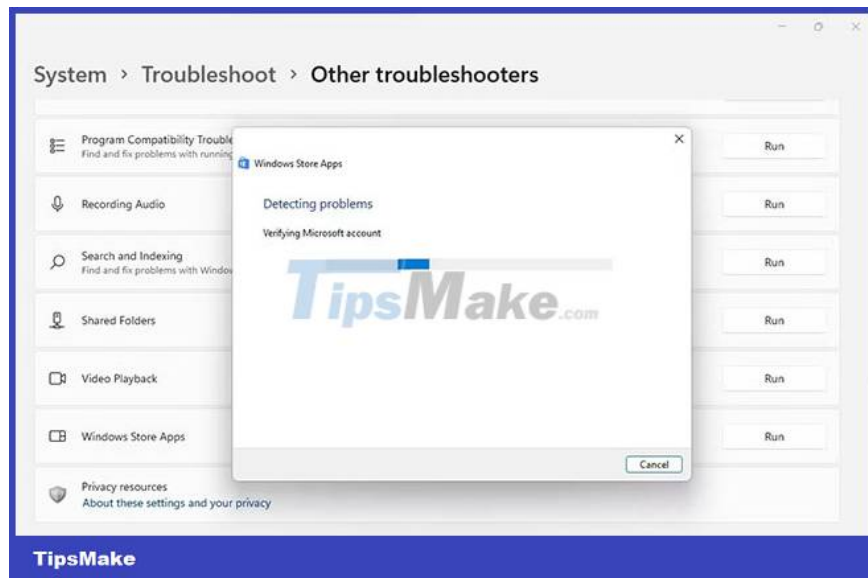
After downloading the latest Windows update, don't forget to reboot the system at least once. If you do not do so, you may encounter various problems, including the Invalid value for registry error.

So please reboot the system and try to view the images again.

2. Run Windows Store Apps Troubleshooter

Windows Store Apps Troubleshooter is a built-in Microsoft utility that helps solve problems with UWP apps after upgrading Windows. You can run this troubleshooter by following the steps below.

1. Open the Settings menu.
2. Select **System** in the left pane.
3. Go to **Troubleshoot > Other troubleshooters** .
4. Click **Run** next to **Windows Store Apps** .



The troubleshooter window will appear and look for any available problems. If it finds any problems, it will suggest potential fixes for you to try.

3. Update the Microsoft Photos app manually

As mentioned above, the error message may appear because the Microsoft Photos app is out of date. You will have to download the latest update to resolve the issue. Here are the steps to do that:

1. Open the Start menu, type **Microsoft Store** and press **Enter**.
2. Click **Library** in the bottom left corner.
3. Click the **Get Updates** button.



The Microsoft Store will begin downloading updates for all apps, including the Photos app. After the update is complete, reboot the system and check for the problem.

4. Change registry settings

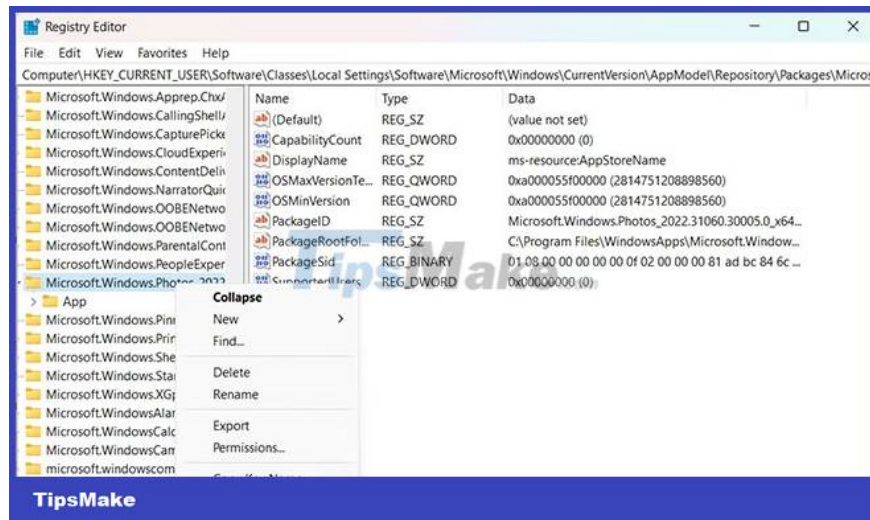
The next solution on the list is to delete all obsolete entries of the Photos app from the Registry. You can do this by following the steps below.

Before proceeding, don't forget to back up the registry so you have something to revert to if something goes wrong.

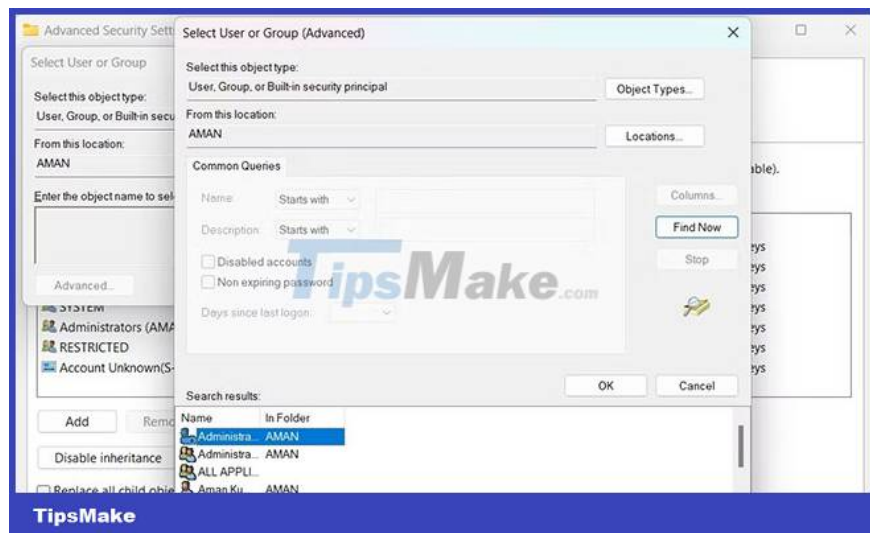
1. Open the Run dialog box, type **regedit** and press **Enter**.
2. If UAC appears, click **Yes**.
3. Click on the address bar, paste the following location and press **Enter** :

HKEY_CURRENT_USER/Software/Local Settings/Software/Microsoft/Windows/CurrentVers

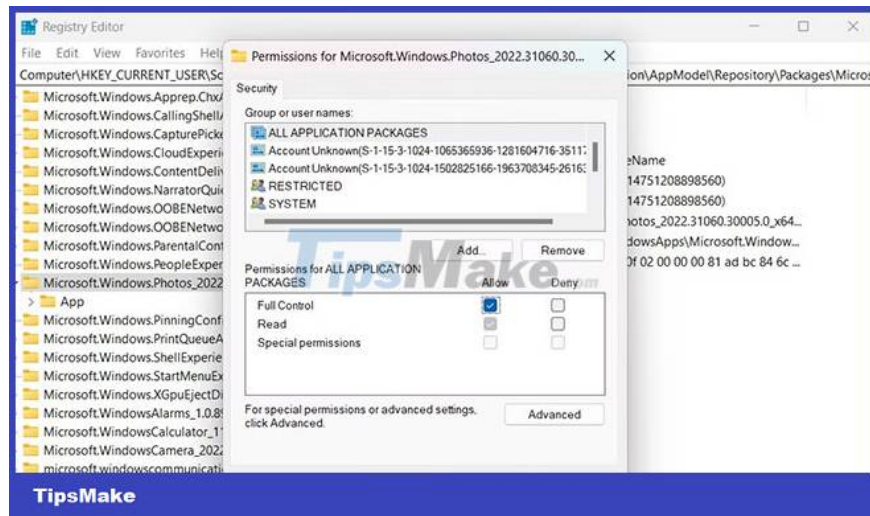
1. Locate and right-click the **Microsoft.Windows.Photos_2022.31060.30005.0_x64__8wekyb3d8bbwe** entry in the left pane.
2. Select **Permissions** from the context menu.



1. Click **Advanced**.
2. In the next window, click **Change** next to the **Owner** tag.
3. **Click on the Advanced** option again and then select **Find Now**.
4. Select the user account from the list and click **OK**.



1. Click **Apply** > **OK**.
2. Right-click **Microsoft.Windows.Photos_2022.31060.30005.0_x64__8wekyb3d8bbwe** and select **Permissions** from the context menu again.
3. Select the username and tick the **Full Control** box.

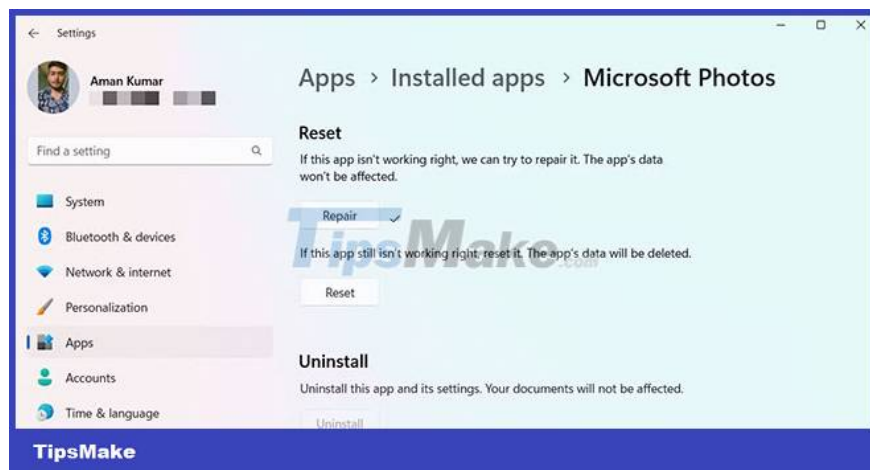


1. Click **Apply** > **OK** .
2. Now, right click on the entry again and select **Delete**.
3. Click **Yes** to confirm your selection.
4. After that, reboot the system and check if you still have the problem.

5. Repair and reset the Photos app

The "Invalid value for registry" error may appear due to a bug in the Microsoft Photos app. You can try using the built-in Windows Repair feature to solve the problem in this situation. Here are the steps to use it.

1. Open the **Settings** menu.
2. Select **Apps** from the left pane.
3. Click **Installed apps**.
4. Locate and click the three dots next to Microsoft Photos and select **Advanced options** from the context menu.
5. Click **Repair** in the **Reset** section.



After Windows finishes repairing the application, restart it and check for the problem.

You will have to reset the application if you still get the error message. To reset the Microsoft Photos app, open the **Advanced** option of the Photos app again and click the **Reset** option.

6. Run an SFC . scan

Windows system files can get corrupted for a variety of reasons and cause many problems, including the "Invalid Value for Registry" error. In this case, you might consider running an SFC scan.

7. Reinstall the Microsoft Photos app

If none of the above solutions help, you have no choice but to reinstall Microsoft Photos. Here are the steps to do that.

1. Open the Start menu, type **PowerShell** and select **Run as administrator** from the right pane.
2. Type the following command and press **Enter** .

```
Get-AppxPackage *photo* | Remove-AppxPackage
```

1. Next, go to the Microsoft Store and search for **Microsoft Photos**.
2. Click **Get** to start the download.
3. After downloading the application, it will automatically be installed on the system.

The new Microsoft Photos app comes with a ton of cool features that you can try out. But sometimes, you may get an "Invalid Value for Registry" error when viewing images through the Photos app.

Fortunately, a quick setup or reinstall can restore the app to its normal working state. Plus, you can even explore other photo viewer apps for Windows.

You finished reading the article "**7 ways to fix 'Invalid Value for Registry' error when viewing photos on Windows**" edited by the [TipsMake](#) team. We hope this article has provided you with many useful tech tips and tricks. You can search for similar articles on tips and guides. Thank you for reading and for following us regularly.