

7 extremely interesting Wifi features on Windows 10 not everyone knows

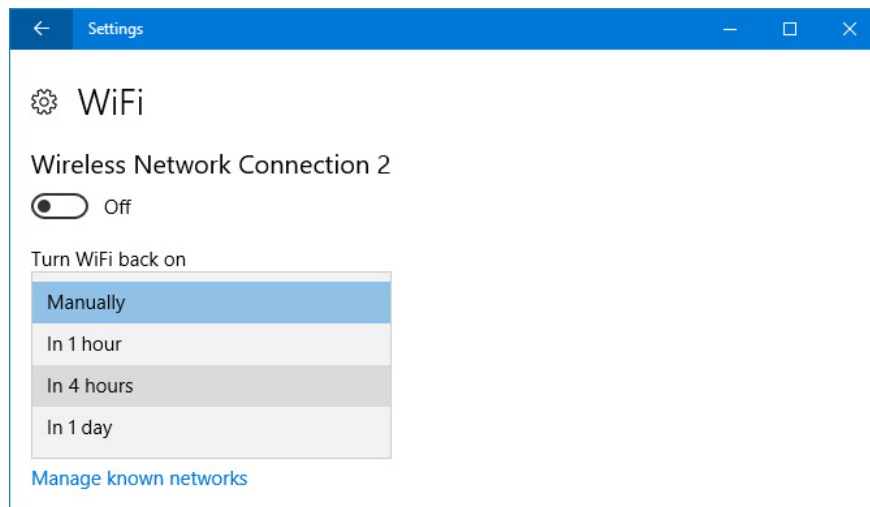
Automatically re-enable wifi after a specific time, monitor data usage or block specific networks from appearing ... are some useful wifi tips on Windows 10 that many users do not know.

Automatically re-enable wifi after a specific time, monitor data usage or block specific networks from appearing . are some useful wifi tips on Windows 10 that many users do not know.

1. Turn on WiFi automatically after a certain period of time

You turn off the wifi on your computer to extend the device's battery life or because you don't want to be bothered while focusing on work. With Windows 10 you don't need to remember to turn on wifi again because it can automatically re-open wifi on your computer.

Open Settings by pressing **Windows + I** key combination -> select **Network & Internet** -> Select **wifi** . Here press the wifi connection bar to **Off** mode.



The **Turn WiFi back on** menu appears -> here you can choose Print 1 hour, In 4 hours, and 1 day Print time to schedule.

You will also see similar options if you turn off Wi-Fi via the icon in the **Taskbar** .

2. Check network speed

When testing network speed on Windows 10, we can know the receiving speed and the maximum transfer rate of the network card.

Press **Windows + X** key combination to open the **WinX Menu** -> here select **Command Prompt** . Copy the command "**netsh wlan show interfaces**" and paste it into the Command Prompt window.

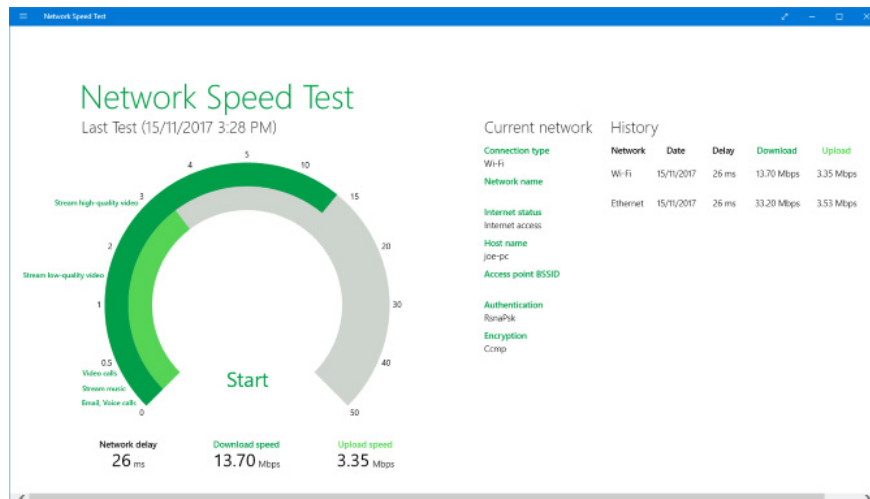
```
C:\WINDOWS\system32\cmd.exe
C:\Users\Joe>netsh wlan show interfaces

There is 1 interface on the system:

Name                : Wireless Network Connection 2
Description         : Qualcomm Atheros AR9485 Wireless Network Adapter
GUID                :
Physical address    :
State               : connected
SSID                :
BSSID               :
Network type        : Infrastructure
Radio type          : 802.11n
Authentication      : WPA2-Personal
Cipher              : CCMP
Connection mode     : Profile
Channel             : 6
Receive rate (Mbps) : 72.2
Transmit rate (Mbps) : 72.2
Signal              : 64%
Profile             :
```

All information about network cards on your system will appear. **Receive rate (Mbps)** and **Transmit rate (Mbps) streams** will tell you the limit of your network card. This information will help you know the hardware's processing capabilities on your computer, not what you are paying for your Internet service provider.

To measure your network speed for free, you can download and install Microsoft's Network Speed Test application.



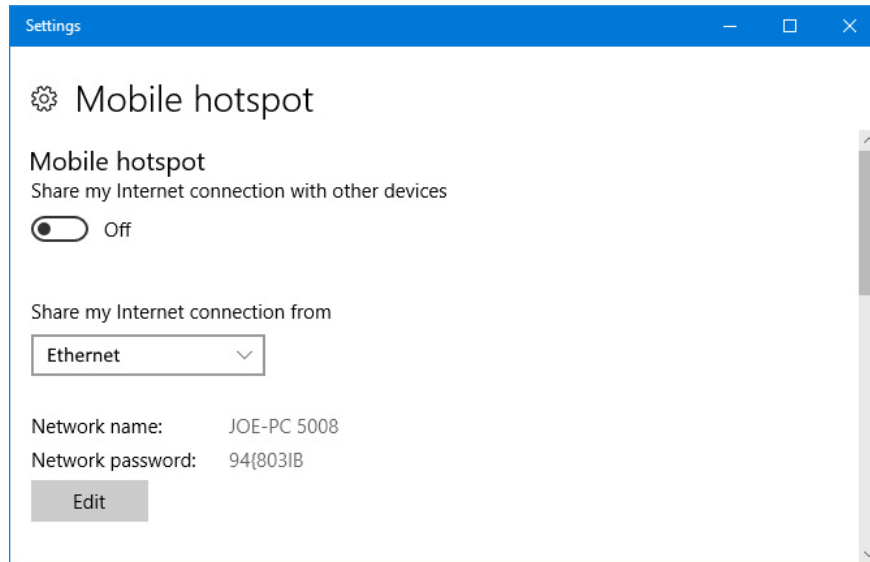
If after checking that the speed is not appropriate, you can tell the network to fix it or follow the instructions in the article [Tips to increase the wifi signal to the highest level](#).

3. Create mobile wifi hotspot

If you use an Ethernet network connection on a Windows 10 computer, you can easily share the wifi connection on the computer for other devices around without using the wifi streaming software. Up to 8 devices can

simultaneously connect to your mobile wifi hotspot.

Press **Windows + I** key combination to open **Settings** -> select **Network & Internet** -> select **Mobile hotspot** -> in the **Share my Internet connection from** menu select your Ethernet connection.



You will be given a network name and password, information so that other devices can connect to your network. If you want to change these two information, click on Edit and enter the new information.

Drag the **Turn on command** switch to **OFF** so that other devices cannot turn on the portable wifi hotspot when you have not activated.

Drag the **Mobile hotspot** slider to **ON** if you are ready.

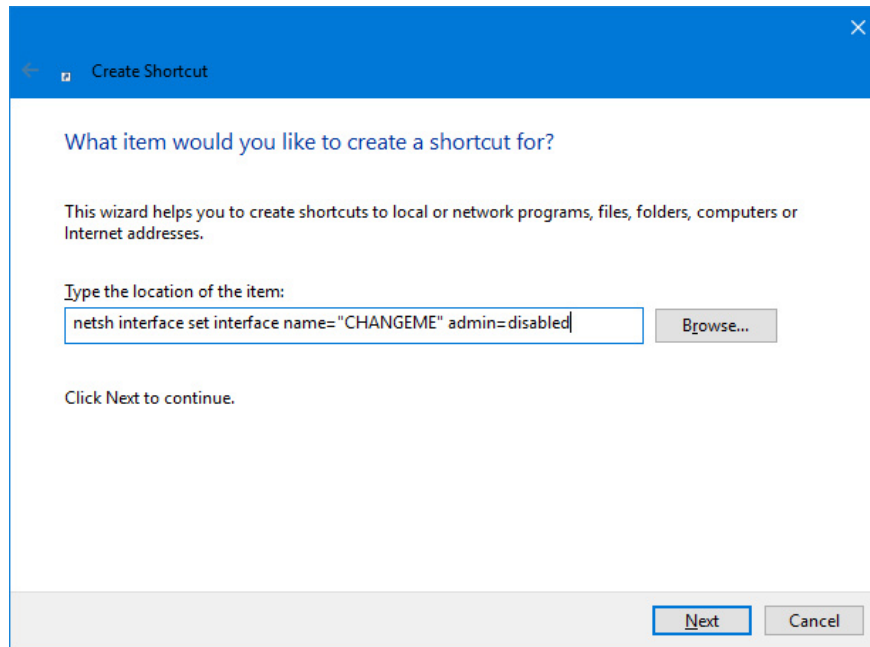
See also: [9 best free wifi playback software in 2017 and download link](#)

4. Turn on / off wifi with shortcut

The fastest way to turn on and off wifi is to use the shortcut.

Right-click the desktop -> select **New** -> select **Shortcut** . Enter the command line **netsh interface set interface name = "CHANGEME" admin = disabled** .

CHANGEME = name of wifi. To know the wifi name, right-click the wifi icon on the Taskbar, all available connections will show up.

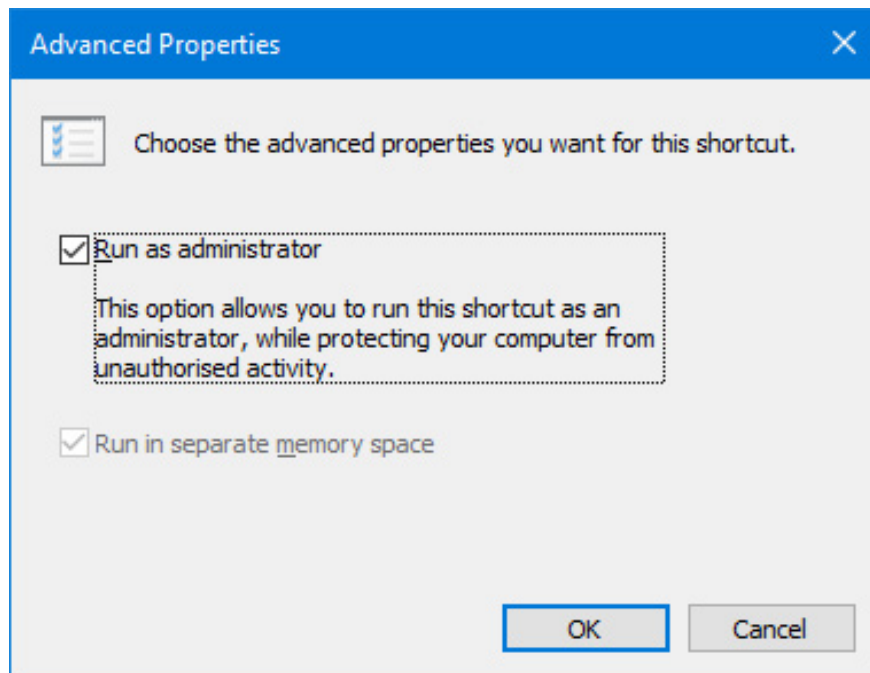


Next, click **Next** . This is the shortcut to turn off wifi, put an appropriate name and select **Finish** .

To create a shortcut to turn on wifi, do the same steps above but replace it with the command line **netsh interface set interface name = "CHANGEME" admin = enabled** .

CHANGEME = name of wifi.

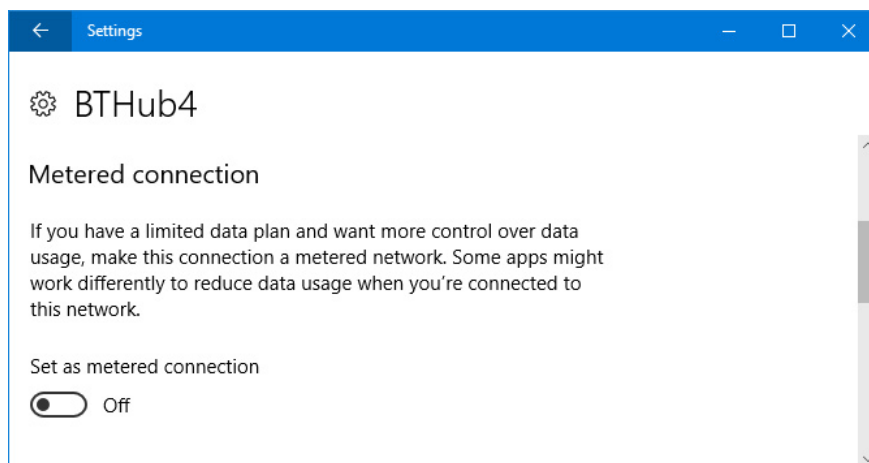
Once completed, to set the shortcut to run under Admin you right-click each shortcut -> select **Properties** -> select **Advanced** . -> click **Run as administrator** -> finally click **OK** .



The **Properties** window appears -> select **Shortcut key** -> Press any key combination you want to use to activate the shortcut -> select **OK** .

5. Use Metered Connection connection

With Windows 10, you can control not to automatically download or sync OneDrive data . and limit access to network data by setting up your wifi connection as a meter.



To enable this feature, open the **Settings** window by pressing **Windows + I** -> select **Network & Internet** -> select **Wifi** -> select **Manage known networks** -> select your wifi connection -> select **Properties** -> Drag the **Set as metered connection** slider to **ON** .

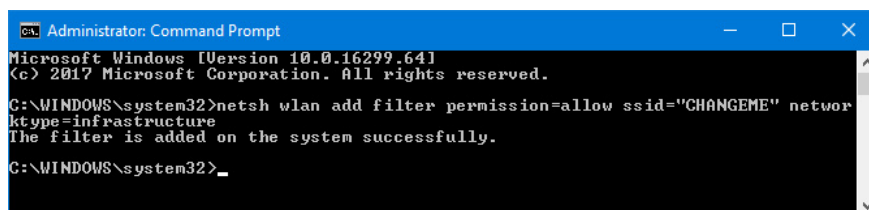
1. Don't waste your Internet traffic, use these 5 bandwidth restriction tools

6. Block wifi network

If you want users to only connect or view the networks you have approved, and other wifi networks do not show up on your computer, you can follow these steps:

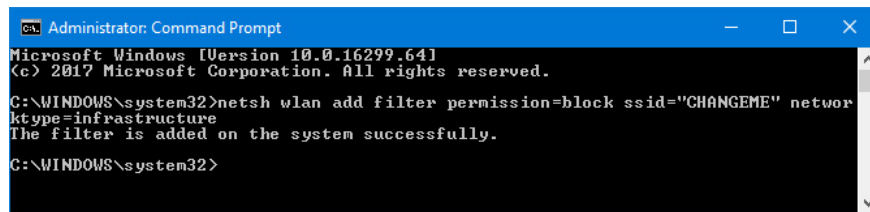
Press the **Windows + X** key combination to open the **WinX** menu -> select **Command Prompt (Admin)** .

To allow specific networks to display, copy the **netsh wlan add filter permission = allow ssid = "CHANGEME" networktype = infrastructure** and paste it into the Command Prompt window.



To block all networks from appearing, copy the **netsh wlan add filter permission = denyall networktype = infrastructure** and paste it into the Command Prompt window.

If you only want to block specific networks, replace it with the **netsh wlan** command **add filter permission = block ssid = "CHANGEME" networktype = infrastructure** .

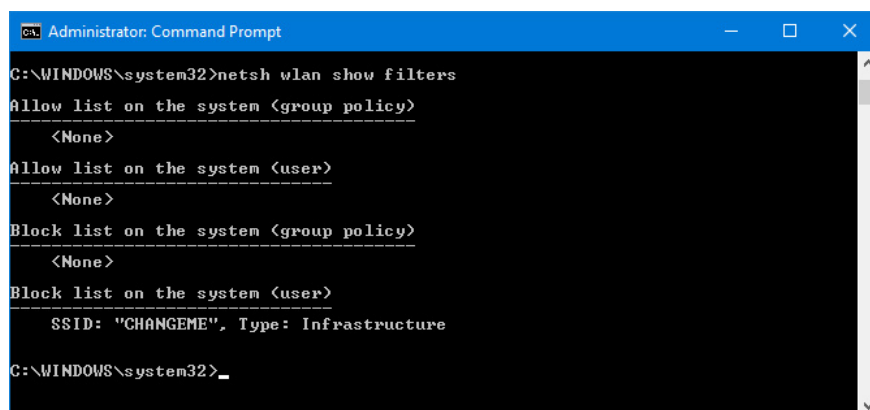


```
Administrator: Command Prompt
Microsoft Windows [Version 10.0.16299.64]
(c) 2017 Microsoft Corporation. All rights reserved.
C:\WINDOWS\system32>netsh wlan add filter permission=block ssid="CHANGEME" networktype=infrastructure
The filter is added on the system successfully.
C:\WINDOWS\system32>
```

Replace CHANGEME = the wifi name you want to allow or block.

If you want to remove the above setting, run the above commands again but replace **add** with **delete** .

To see the list of active filters, run the **netsh** command **wlan show filters** .

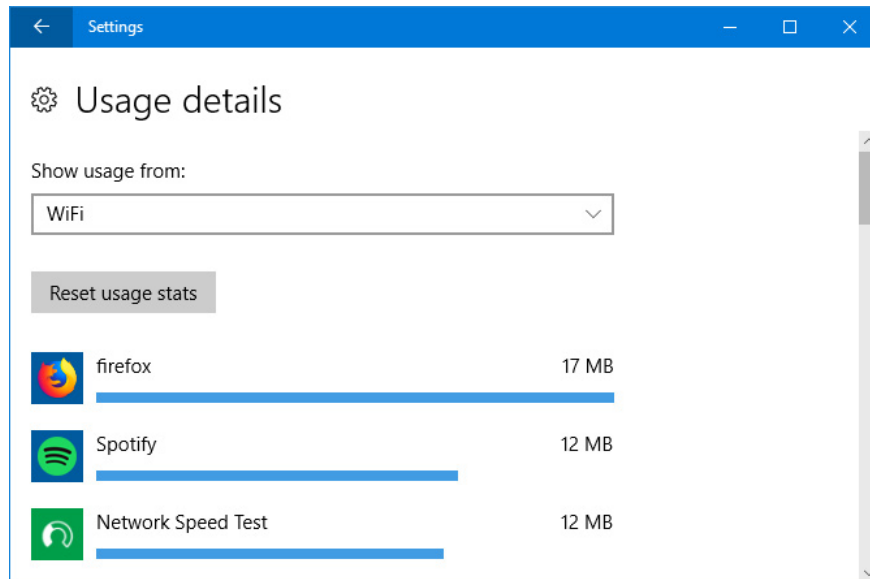


```
Administrator: Command Prompt
C:\WINDOWS\system32>netsh wlan show filters
Allow list on the system (group policy)
-----
<None>
Allow list on the system (user)
-----
<None>
Block list on the system (group policy)
-----
<None>
Block list on the system (user)
-----
SSID: "CHANGEME", Type: Infrastructure
C:\WINDOWS\system32>
```

7. Track usage data of each application

You can view the amount of data used by each application on the system within the last 30 days by the following way:

Press **Windows + I** key combination to open **Settings** -> select **Network & Internet** -> select **Data usage** -> click **View usage details** -> in **Show usage from** menu select **WiFi** .



Choose **Reset usage stats** to reset the calculation in 30 days.

To view network usage in real time, follow these steps:

Press **CTRL + Shift + Esc** to open **Task Manager** -> select **Processes** tab -> select the **Network** column to see the data used in Megabytes per second of each application and process running in the background.

See more:

1. Microsoft closed the expiration date for free updates to Windows 10 on January 16, 2018
2. How to enable Near Share on Windows 10
3. Users can already experience HDR of Netflix on Windows 10

You finished reading the article "**7 extremely interesting Wifi features on Windows 10 not everyone knows**" edited by the [TipsMake](#) team. We hope this article has provided you with many useful tech tips and tricks. You can search for similar articles on tips and guides. Thank you for reading and for following us regularly.