

6 Ways to fix computer not recognizing wired mouse, USB

The error of the computer not recognizing the mouse directly affects the performance and user experience. If you are experiencing this situation, follow the instructions from Free Download to restore the connection immediately.

Computer not recognizing mouse greatly affects work. First, you find the cause, then proceed to fix the error to overcome this situation.



Fix computer not recognizing mouse

1. Plug the mouse into another port

If you are using a USB mouse, try unplugging it and plugging it into another USB port to see if the computer recognizes the mouse.

If you still can't connect to your mouse, the problem is most likely with the mouse itself. To test this, try plugging the mouse into another computer and see if it works. If not, it's time to replace the mouse.

2. Check Human Interface Device Service

The Human Interface Device Service allows USB devices to use Windows resources. Occasionally, this service can get stuck and cause errors. To fix this, try checking to see if the Human Interface Device Service is running.

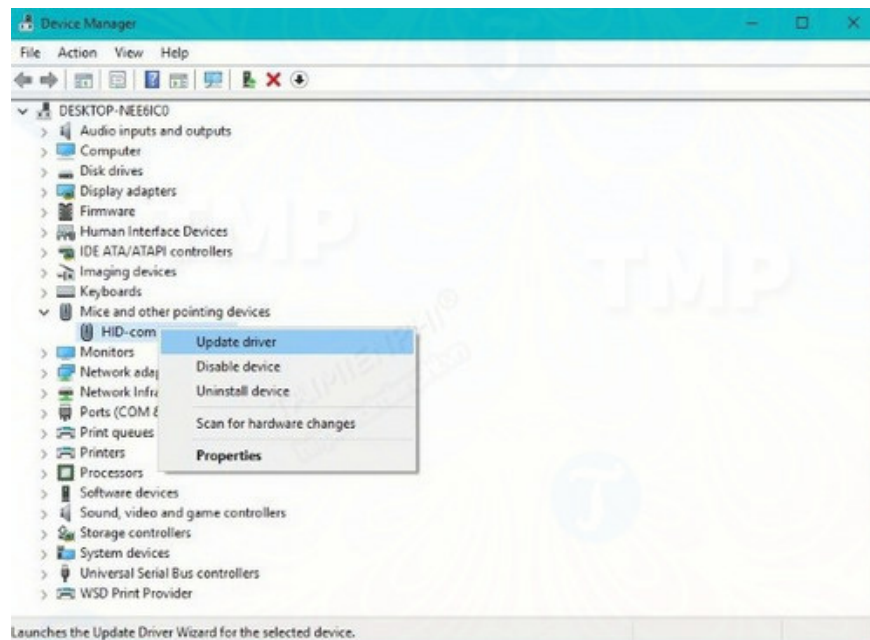
Step 1: Right-click any empty space on the Taskbar, select **Task Manager** .

Step 2: On the Task Manager window, select the **Services** tab and then click the **Open services text** link in the bottom corner.

Step 3: Scroll down the list to find **Human Interface Device Service** and check if the service is running and set to Automatic.

Step 4: If the service is running, right-click on it and select **Restart** .

Step 5: Finally check if the computer has recognized the mouse.



If not, another solution for you is to update the mouse driver that TipsMake introduced above.

3. Boot Windows into Safe Mode

The last solution is to boot Windows into Safe Mode. In this mode, all drivers, applications and some other features will be disabled. Here you can check and find the culprit causing the error.

If you don't know how to do it, you can refer to the article on how to enter Safe Mode on Windows 7/8/10 on TipsMake to know how to boot your Windows computer into Safe Mode.

After booting into Safe Mode and the computer recognizes the mouse, the culprit may be the mouse driver. All you need to do is uninstall the driver, restart the computer, and go to the manufacturer's website to download and install a new driver.

And if you have applied all the above solutions but they are not available, the bad news is that it is time for you to replace the mouse.

4. Remove the USB port and clean it

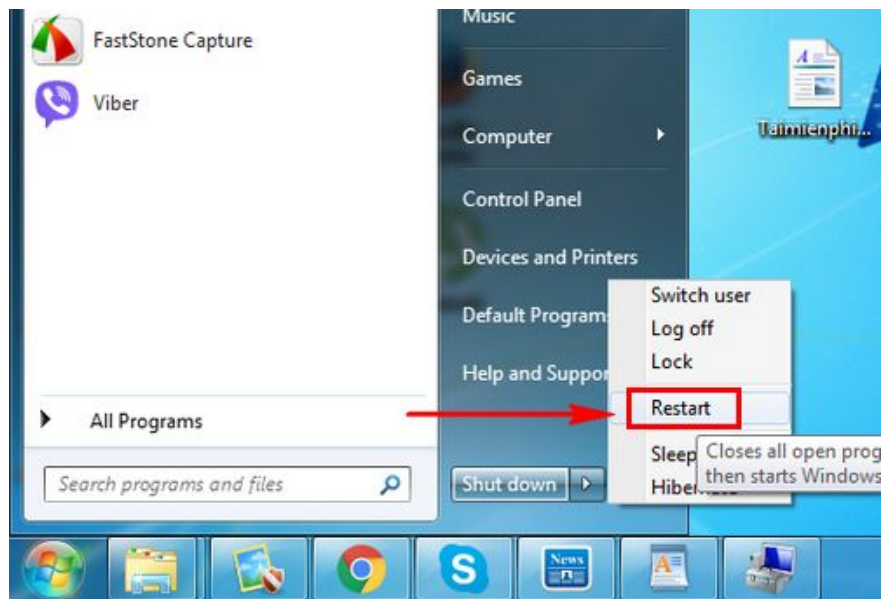
You can try cleaning the mouse and reconnecting it to the computer to see if it works. In fact, cleaning the mouse regularly is very necessary. Even if you buy a new mouse, you should still pay attention to cleaning it regularly. If the mouse is too dirty and not maintained, it will quickly have problems.



5. Restart your computer

Another reason is that your computer is in conflict with some software or application, so the mouse driver does not run. Users should restart the computer to see if the mouse can run or not. During the process of restarting the computer, you can also remove the mouse USB port and plug it back in.

You can use the laptop keyboard to restart the computer. If it is a PC, press the **Windows** key > **Right arrow** --- > select **the up arrow** to the Restart section and press **Enter** to restart the computer.



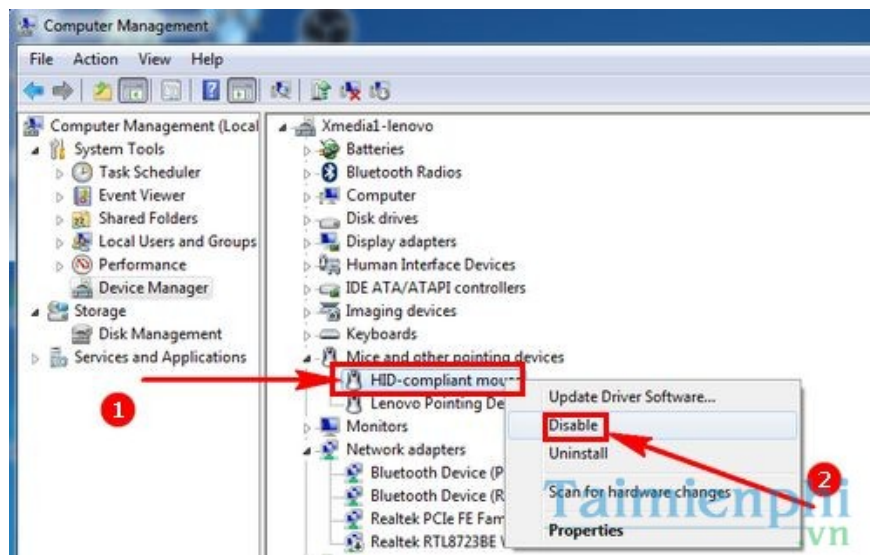
6. Turn off and on computer mouse driver

Many cases where the computer does not recognize the mouse come from someone who has disabled your mouse driver. To turn it back on, restart your computer mouse according to the instructions below:

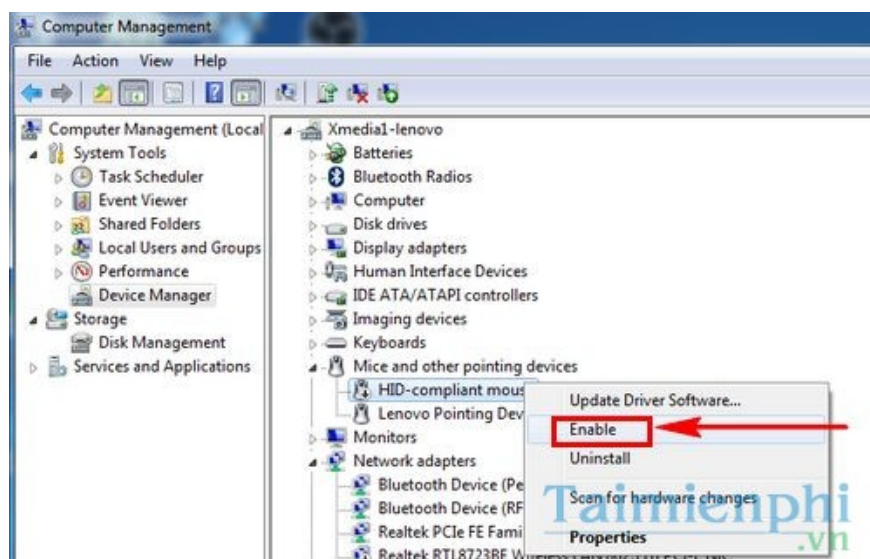
Step 1: Right click on **My Computer** and select **Manage**



Step 2: Next go to **Device Manager** and select **HD Complaint mouse** then right click **Disable** .



Step 3: At this time, the computer mouse will be turned off. Use the laptop mouse to right-click on **HD Complaint mouse** and select **Enable** to turn the mouse back on.



If you follow the 3 methods above and still cannot fix the error, it is likely that your mouse is broken. The cause may be a broken USB connection cable or a broken computer mouse. If you encounter a broken computer mouse error, you should consider buying a new mouse.

You finished reading the article "**6 Ways to fix computer not recognizing wired mouse, USB**" edited by the [TipsMake](#) team. We hope this article has provided you with many useful tech tips and tricks. You can search for similar articles on tips and guides. Thank you for reading and for following us regularly.