

6 ways to fix Bluetooth errors not in Device Manager on Windows 10, 8.1, 8, 7, XP, Vista

Cannot connect a Bluetooth device to a computer? Bluetooth keyboard, mouse, microphone, headset or other wireless devices are not recognized in Windows computers, this is a Bluetooth error not available in Device Manager on windows. Therefore, this article will introduce you to 6 ways to fix this Bluetooth error on Windows.

Cannot connect a Bluetooth device to a computer? Bluetooth keyboard, mouse, microphone, headset or other wireless devices are not recognized in Windows computers? Device Manager does not have Bluetooth Radios in the Device Manager list? This is the Bluetooth error that is not available in Device Manager on windows. Therefore, this article will introduce you to 6 ways to fix this Bluetooth error on Windows.

1. How to connect a Bluetooth device on Windows

Where is Bluetooth in Device Manager? Normally, if Bluetooth works well, it will be displayed in " **Network adapters** " or " **Other devices** " in some cases.

However, no Bluetooth adapter in Device Manager or Bluetooth adapter is not available in the Control Panel.

1. After installing new Windows.
2. After updating Windows as Windows 10 update.
3. After installing the update from Windows Updates.
4. After installing some software do not know.

See more:

1. How to fix Windows 10 Fall Creators Update updates
2. How to turn off Windows Update on Windows 10
3. How to turn off automatic updating on Windows 7, Windows 8 / 8.1

Why can't Bluetooth be found in Device Manager?

If the Bluetooth Devices section is not available or disappears from Device Manager or Control Panel, users will definitely not be able to connect the wireless device via Bluetooth to the computer. The main cause of this problem:

1. Bluetooth driver is outdated, missing or corrupted.
2. Bluetooth Support service has not been started.
3. Bluetooth Support service is not configured to use an admin account on a computer.

Another reason Bluetooth is not in Device Manager is that the Bluetooth adapter is broken and Windows cannot recognize it, but this only happens in rare cases.

If Bluetooth radio disappears from Device Manager or there is no Bluetooth connection item available in Device Manager / Control Panel, users can apply one of the following 6 methods to solve the problem. These methods apply to computers such as Asus, Acer, Dell, HP, Sony, Lenovo, Samsung, Toshiba, IBM, Alienware, Compaq, Gateway, LG, Microsoft, MSI . on Windows 10, Windows 8.1, Windows 8, Windows 7, Windows XP and Windows Vista.

1. How to fix lost Bluetooth error on Windows 10 Settings settings

Ways to troubleshoot Bluetooth problems in Device Manager

Method 1: Turn on Bluetooth Support service

Stopping or disabling the Bluetooth Support service may prevent the installed Bluetooth device from working properly and prevent new devices from being found or connected. If the Bluetooth adapter is still active and it does not display in Device Manager on Windows 7, Windows XP or Windows Vista, try turning on the Bluetooth Support service.

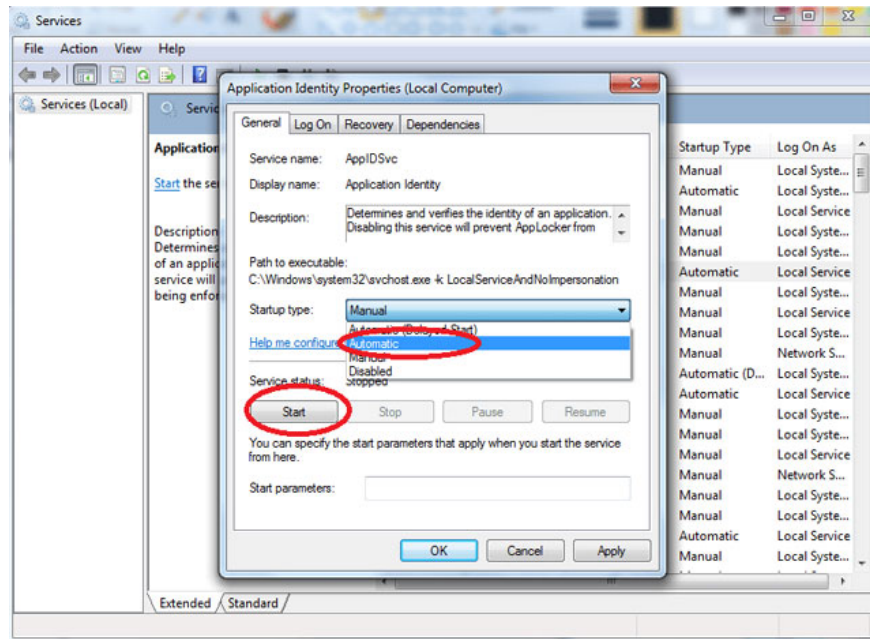
Step 1. In Windows 7 and Windows Vista, click **Start** , in the search box type **services.msc** , and click "**Services** " in the **Programs** list. For Windows XP, click "**Start** " and "**Run** ", type **services.msc** and click "**OK** ".

Step 2. If a message appears asking to enter an admin password or to confirm, enter the password to continue.

Step 3. Find the Bluetooth Support service and double-click it.

Step 4. In the pop-up list, click "**Start** ". On the "**Startup type** " list, select "**Automatic** ". Click the **Log On> Local System account** tab > **OK**.

Step 5. Restart the computer.



Method 2: Set options to restore Bluetooth Support service

If the Bluetooth Support service continues to stop, the problem of not having Bluetooth in Device Manager continues to exist, users can try setting up restarting the service. Perform as step 1 to step 3 in Method 1 above, then click the " **Recovery** " tab and select " **Restart the Service** ".

Method 3. Fix Bluetooth driver error

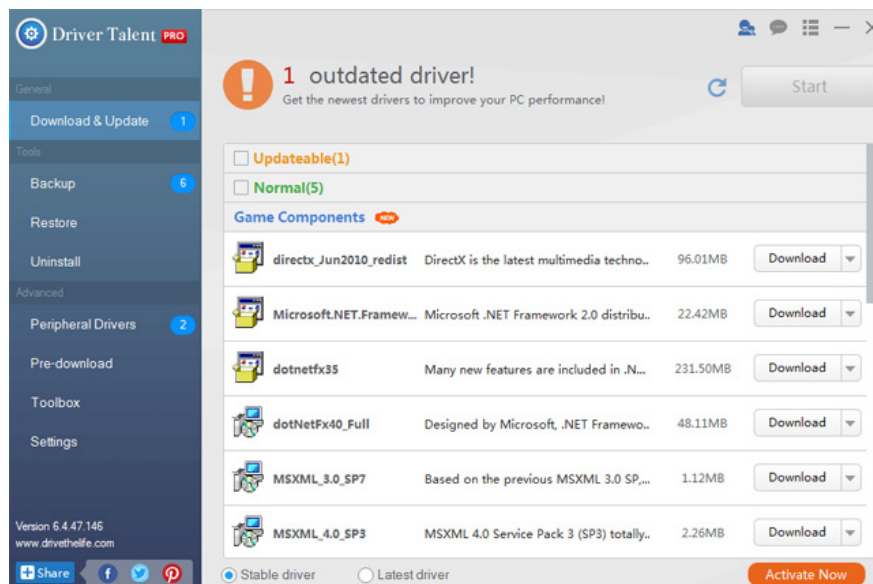
Performing to fix Bluetooth driver error manually is not easy, users need to find the error driver, download the exact driver version to be installed. However, with a professional driver repair tool like OSToto Driver Talent, you can easily edit Bluetooth drivers. This free utility will help find the problematic Bluetooth driver, and then download and install the most suitable driver for Bluetooth. This will fix the problem that Bluetooth does not work.

1. How to identify and install the correct driver missing for Windows?

Step 1. Run Driver Talent to scan your computer.

Step 2. In the scan results, click on the Bluetooth item to repair the driver.

Step 3. After installing the bluetooth driver, restart the computer to save the changes.



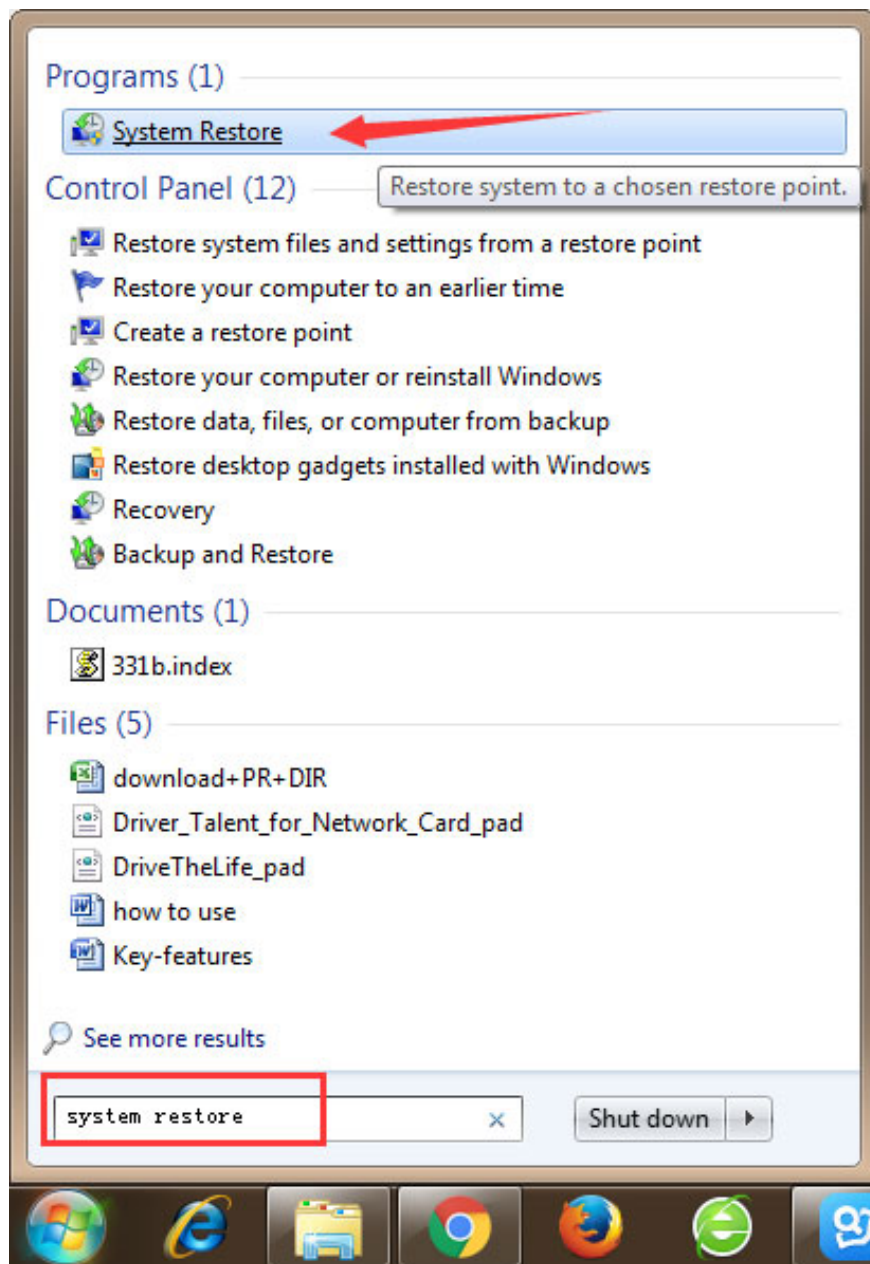
Method 4. Remove suspicious software

In some cases, some software you just installed on your computer may "kill" Bluetooth. If Bluetooth is disabled immediately after installing a certain software, remove the software and restart the computer.

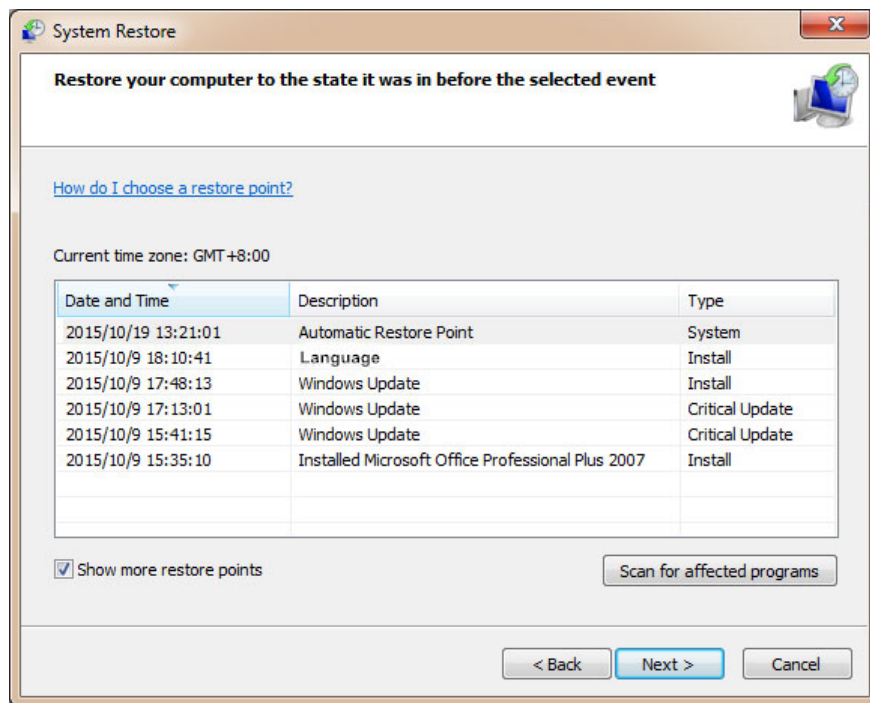
Method 5. Perform system recovery

System restore restores the state of the computer to its previous state. Users can use this feature to restore the computer to the day Bluetooth is still working normally. Because system restore will delete the data added to the computer after the recovery time, backup important data if needed.

Step 1. Access System Restore by typing " **system restore** " in the Start search box.



Step 2. Select restore point when Bluetooth is working normally.



Step 3. Confirm the restore point and wait for it to complete.

Method 6. Add USB Bluetooth Adapter device

Another quick solution that can be used to fix Bluetooth errors is to add a new Bluetooth adapter to the computer. This Bluetooth USB is very small and easily plugged into the standard USB port. Remember to try Driver Talent to download and install the Bluetooth driver. After that, you can use any Bluetooth device with your computer.



I wish you all success!

You finished reading the article "**6 ways to fix Bluetooth errors not in Device Manager on Windows 10, 8.1, 8, 7, XP, Vista**" edited by the [TipsMake](#) team. We hope this article has provided you with many useful tech tips and tricks. You can search for similar articles on tips and guides. Thank you for reading and for following us regularly.
