

6 ways to check SSD or HDD hard drive in detail and quickly!

How to check if the hard drive is SSD or HDD? Check out 9 quick and simple ways to check if the hard drive is SSD or HDD with HACOM!

Compared to HDD, SSD provides faster data access and reading speed and is safer when it is resistant to drops and crashes. Therefore, checking whether the hard drive is SSD or HDD will help you predict whether the computer is operating stably and smoothly or not. Let's learn **how to check SSD or HDD** in detail below!

What is SSD? What is HDD?

SSD stands for Solid State Drive: this is a solid state drive with similar functions to HDD. SSD drives use semiconductor memories such as SRAM, DRAM or FLASH for storage instead of mechanics like traditional HDDs.

HDD stands for Hard Disk Drive: this is a traditional hard drive, which can store data on the surface of a circular disk covered with magnetic material, data is scanned from the disk through the read-write part placed on the disk when rotating. HDD hard drives are non-volatile memory, meaning that when they do not have a power source, the information stored on the drive is still preserved.

How to check SSD or HDD hard drive in detail

How to check SSD or HDD Win 10 hard drive simply by manual method

You can manually check SSD or HDD hard drive right on Windows 10 through the following 4 steps:

Step 1: Open This PC > Right-click and select Manage.

Step 2: In the Computer Management window, select the Disk Management tab > Right-click on the drive to check > Select Properties.

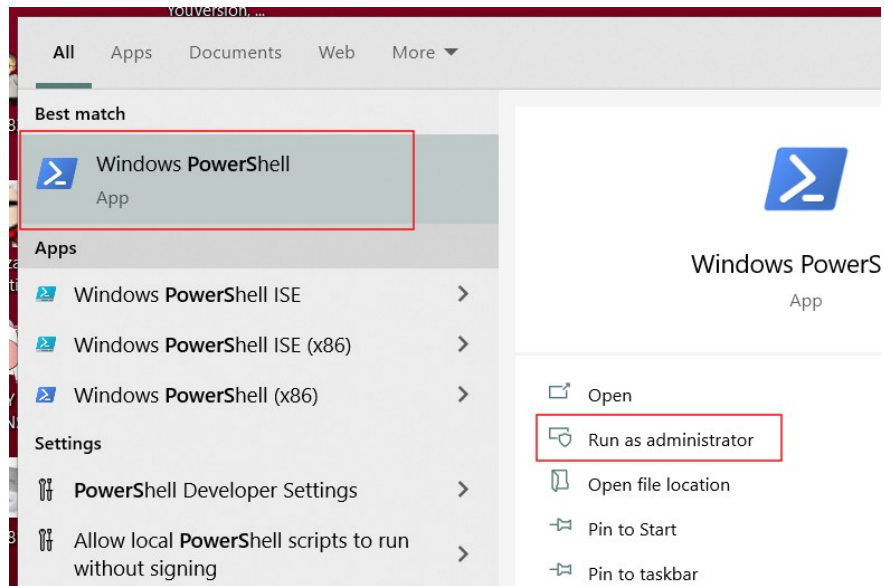
Step 3: On the General tab, copy the hard drive code.

Step 4: Google the code to get more information about the hard drive.

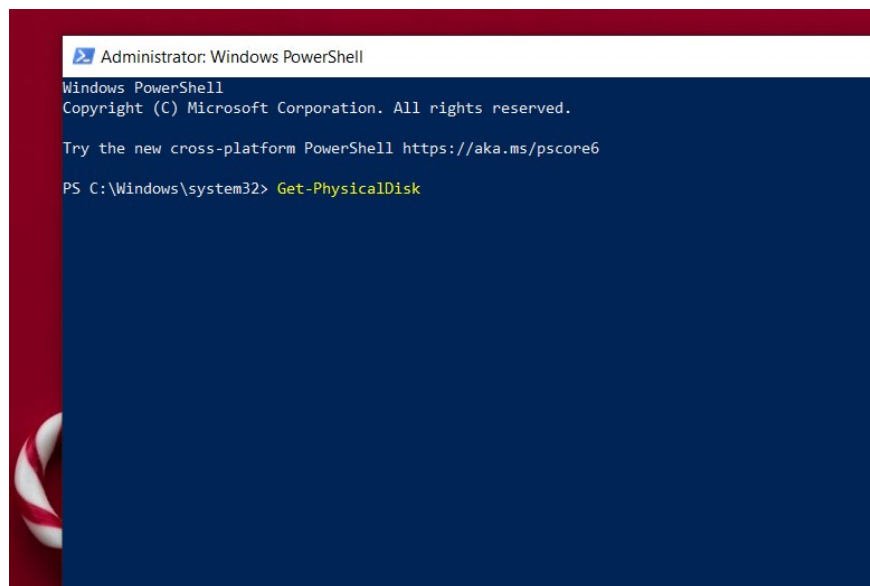
How to check SSD or HDD Win 7 hard drive with Windows PowerShell

Windows PowerShell is the simplest and fastest way to check SSD or HDD hard drive.

Step 1: Press the Windows + S key combination, type 'powershell' > Move the mouse to Window PowerShell > Right-click and select Run as administrator.



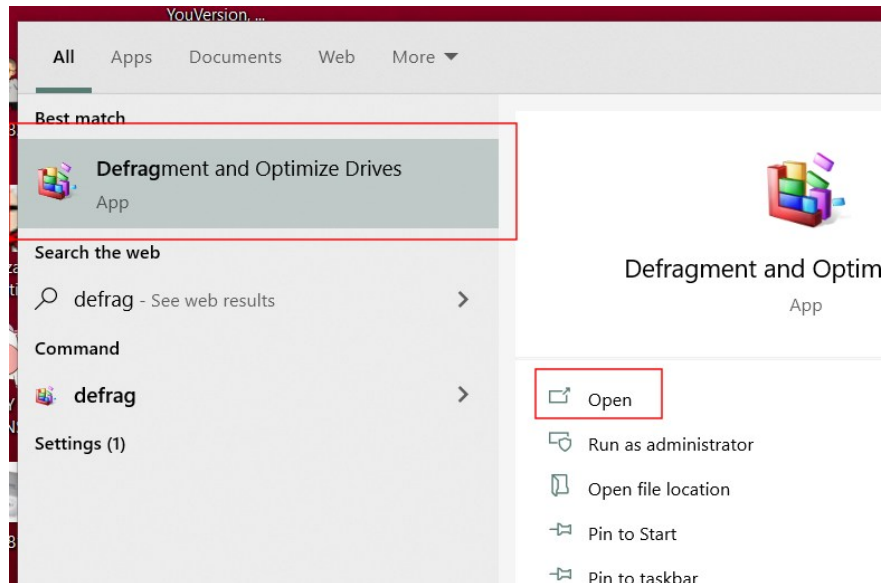
Step 2: Click the get-physicaldisk command.



In the MediaType column, you will read whether your hard drive is SSD or HDD.

How to check if your hard drive is SSD or HDD using Optimize Drives tool

Step 1: Press the Windows + E key combination to open File Explorer.



Step 2: Right-click on any hard drive > Select Properties.

Step 3: In the next window, click Tools > Click Optimize.

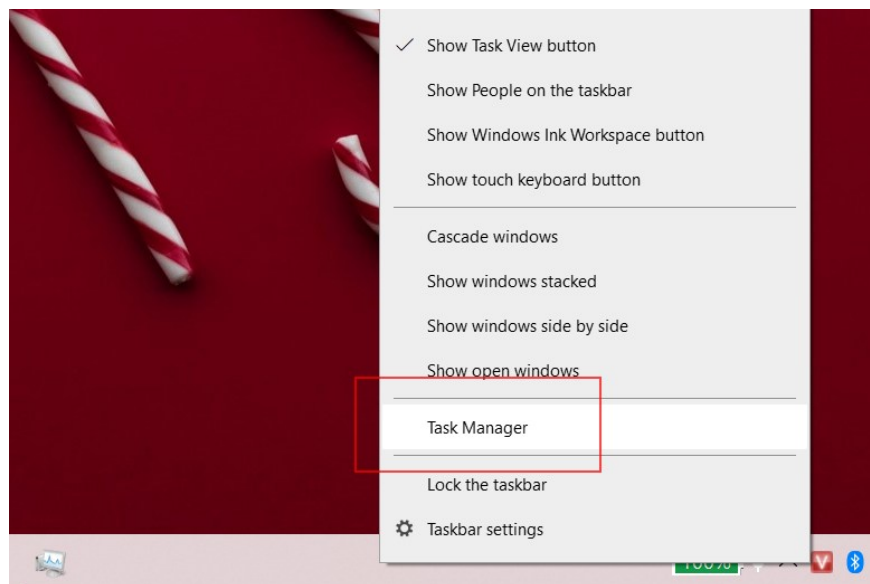
Step 4: The Optimize Drives window appears, in the Media type column you can see your hard drive type.

- Solid state drive is SSD.

- Hard disk drive is HDD.

How to check SSD or HDD hard drive via Task Manager

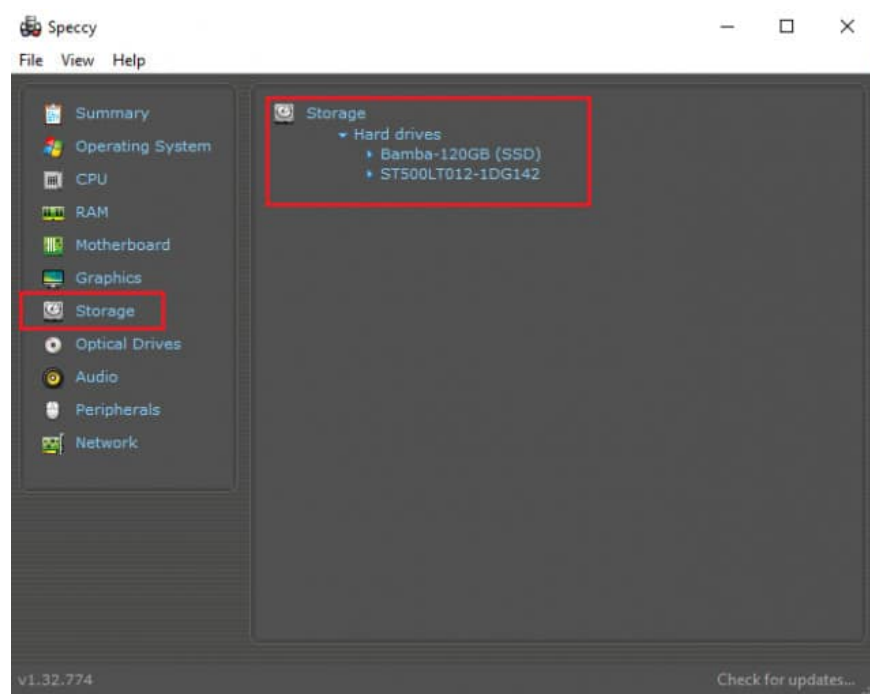
Step 1: Press the 3-key combination Ctrl + Shift + Esc to open Task Manager.



Step 2: The Performance tab will display information about the parameters, you will know the hard drive your computer is using.

How to check SSD or HDD Win 7 hard drive with Speccy software

Speccy software is a free tool that helps users view information about hardware such as computer CPU, hard drive, peripheral devices, etc. The software interface is very easy to use, so many people trust and choose it.



Step 1: Download the software, then install and open the user interface.

Step 2: Click Storage on the right menu bar. Here, the software will display detailed information about the hard drive.

View hard drive information using Device Manager

Here is a quick way to view laptop hard drive information from Windows settings. To check hard drive information, follow these steps:

- Step 1: Open the Device Manager dialog box

+ With Windows 10: Press the key combination "Windows + X" -> Select Device Manager + With Windows 7, 8: Press Windows or click Start menu -> Type "Device Manager" in the search bar -> OK

- Step 2: Look up hard drive information

+ Double click on Disk drivers

+ Copy and paste the hard drive name into Google to see if it is HDD or SSD

How to check SSD or HDD hard drive with CrystalDiskInfo

CrystalDiskInfo will tell you much more detailed information about your hard drive:

- Is the hard drive in good condition?
- What is the operating temperature of the hard drive?
- What is the rotation speed?
- Etc.

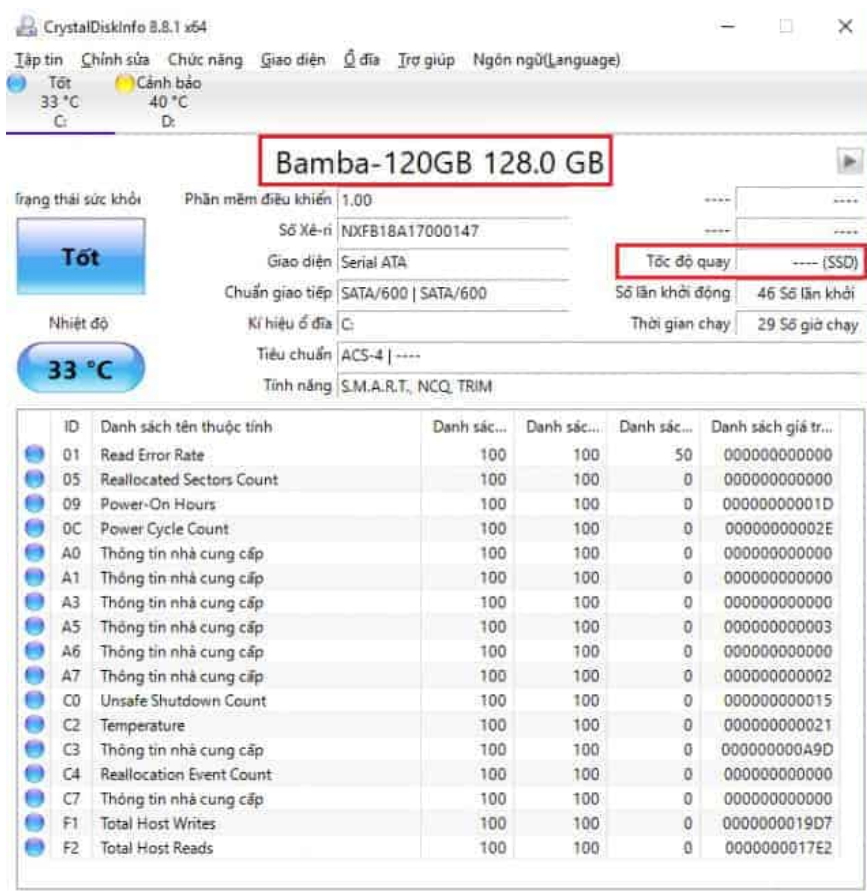
To use CrystalDiskInfo to check hard drive parameters, do the following:

Step 1: Download CrystalDiskInfo software to your computer

Download link: <https://crystalmark.info/en/software/crystaldiskinfo/>

Step 2: Check hard drive type

- Method 1: Check the rotation speed index on the computer
- + If this item displays 7200 or 5400: your laptop uses HDD hard drive
- + Conversely: computers using SSD drives



- Method 2: Check hard drive name
- + The machine will display the hard drive name first.

+ Copy the exact drive name -> search on Google to see if they belong to SSD or HDD hard drive

Check hard drive on Macbook

Besides regular computers, you can check the hard drive on a macbook through the steps below:

- Step 1: Click on the Apple menu -> select About this Mac
- Step 2: Click System Report (in the Overview tab)
- Step 3: Select Storage to see all information about the hard drive used for Macbook (Medium Type section)

Conclude:

Above are 6 **ways to check SDD or HDD hard drive** that TipsMake shares. We hope you will easily check your laptop hard drive to predict whether the machine is operating stably and smoothly or not. For any questions, please contact hotline 19001903 for advice and support.

You finished reading the article "**6 ways to check SDD or HDD hard drive in detail and quickly!**" edited by the [TipsMake](#) team. We hope this article has provided you with many useful tech tips and tricks. You can search for similar articles on tips and guides. Thank you for reading and for following us regularly.