

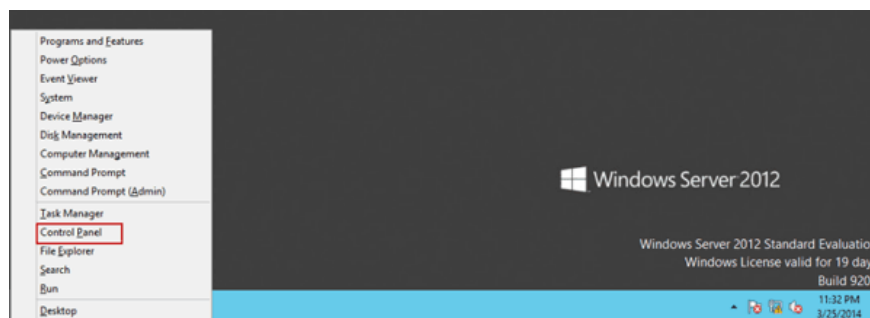
6 ways to access Control Panel on Windows Server 2012

Windows provides a range of tools on the Control Panel so users can easily customize most settings. Unlike other Windows versions, Windows Server 2012 interface has some new features so when you access applications, installing on Windows Server 2012 will be different than previous Windows versions.

Windows provides a range of tools on the Control Panel so users can easily customize most settings. Unlike other Windows versions, Windows Server 2012 interface has some new features so when you access applications, installing on Windows Server 2012 will be different than previous Windows versions.

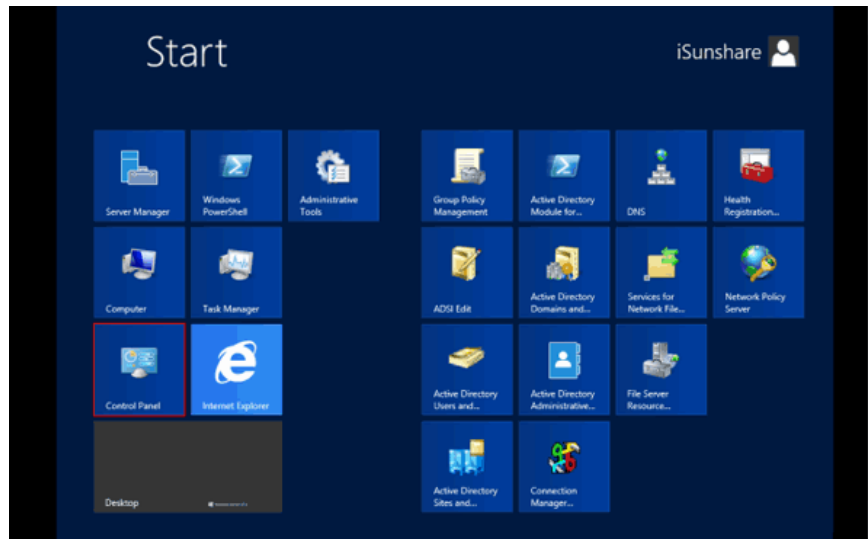
In the article below, Network Administrator will show you 6 ways to access Control Panel on Windows Server 2012.

1. Open Control Panel with a Shortcut



On the screen, press the **Windows + X** key combination and select the Control Panel option to open the Control Panel.

2. Open Control Panel on Start Screen



Press **Windows + C** key combination then click Start to open Start Screen. Or alternatively, hover your mouse on the lower left corner of the Desktop, click **Start** .

On the Start Screen you will see Control Panel, click on it to open the Control Panel.

3. Access Control Panel on Desktop

Settings

Desktop

Control Panel

Personalization

Server info

Help



isunshare.com



Disabled



Unavailable



Notifications



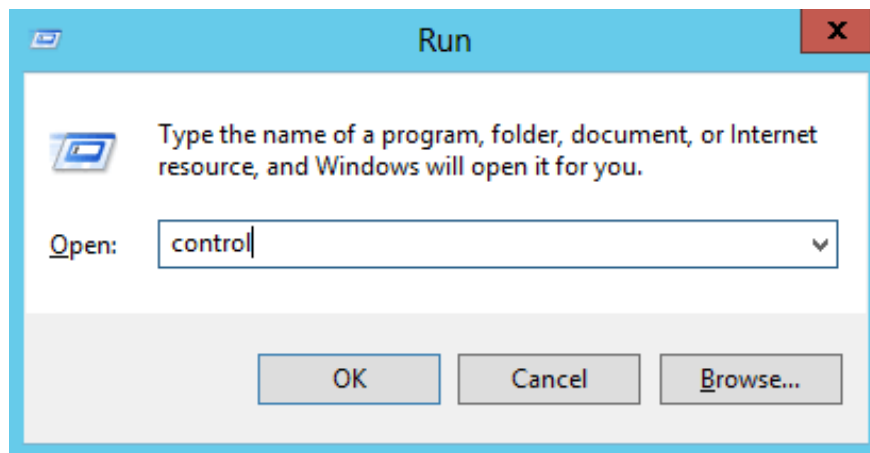
Power



Keyboard

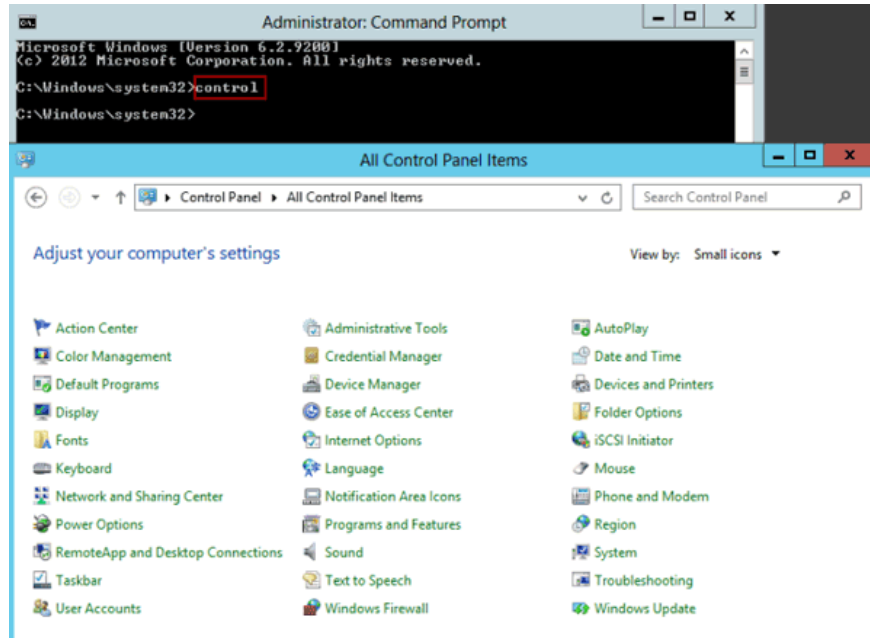
On Windows Server 2012 Desktop, hover over the upper right corner of the screen, then click Setting and then click Control Panel.

4. Launch Control Panel on the Run dialog box



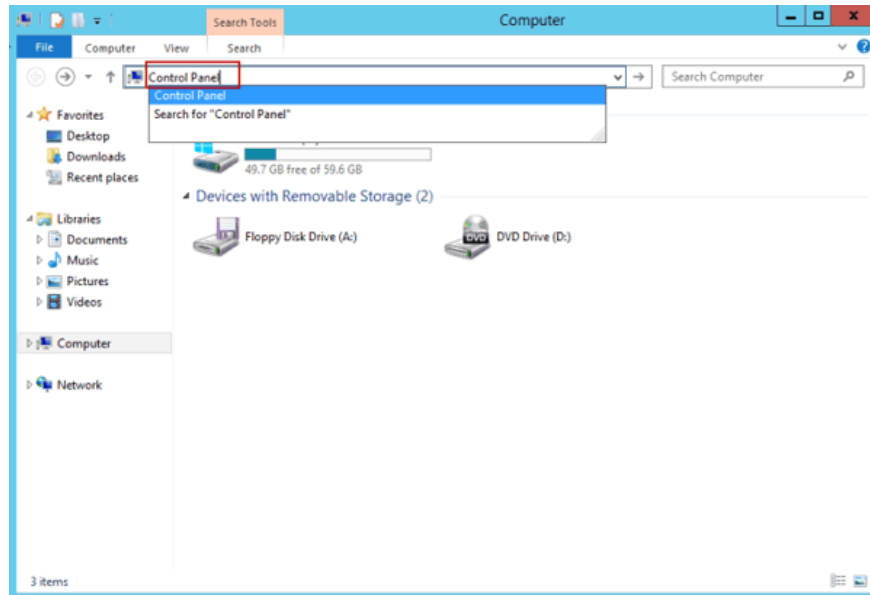
Press **Windows + R** key combination to open the Run dialog box, then enter the command **shell: ControlPanelFolder** or enter **Control** into the Run dialog window and press **Enter** .

5. Launch Control Panel with Command Prompt



First, open the Command Prompt then enter the **Control** command into the Command Prompt window to open the Control Panel.

6. Access Control Panel via Explorer



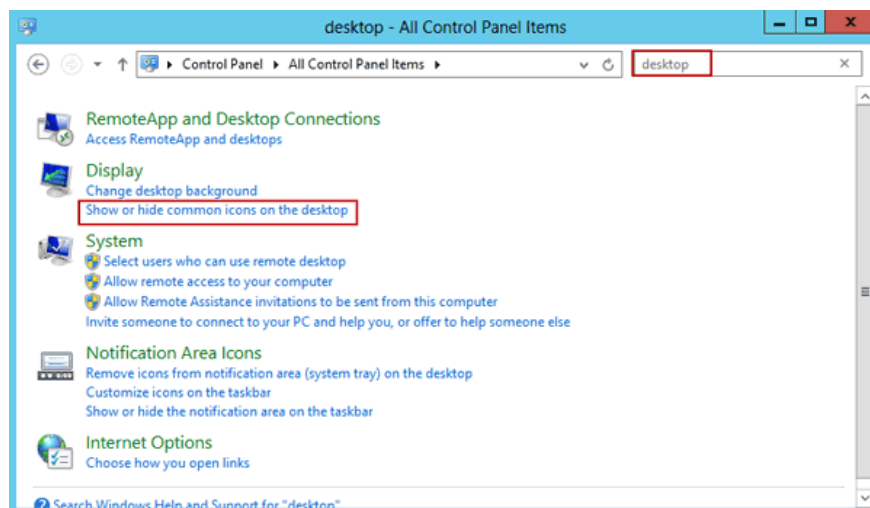
Press **Windows + E** key combination to open Explorer, then enter Control Panel in the address bar and press Enter.

7. How to add Control Panel on Windows Desktop 2012 Windows Server?

Step 1:

Use 1 of 6 ways to open the Control Panel.

Step 2:

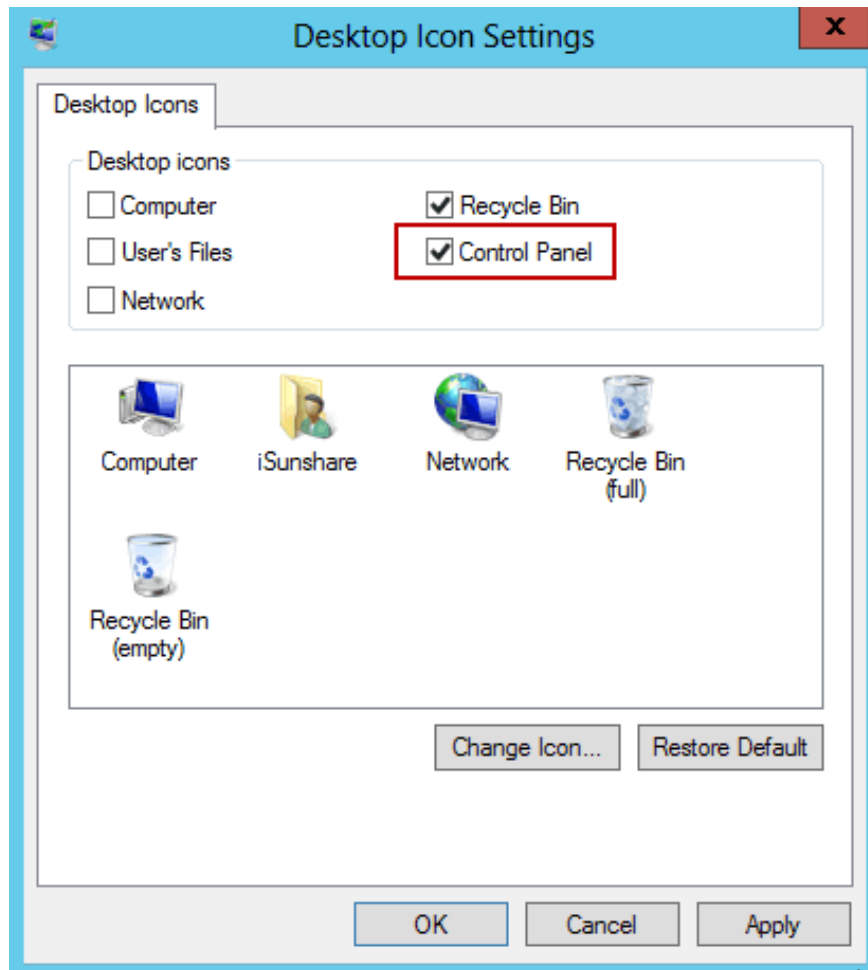


On the Control Panel search box, enter "**Desktop**" and press **Enter** to search.

Step 3:

Click on the **Show or hide common icons option on the desktop** under **Display** .

Step 4:



On the Desktop Icon Settings window, click **Control Panel** and then click **Apply** .

You can refer to some of the following articles:

1. **Learn about Windows Server 2012 (Part 1)**
2. **Learn about Windows Server 2012 (Part 2)**
3. **Learn about Windows Server 2012 (Part 3)**

4. Learn Windows Server 2012 (The last part)

Good luck!

You finished reading the article "**6 ways to access Control Panel on Windows Server 2012**" edited by the [TipsMake](#) team. We hope this article has provided you with many useful tech tips and tricks. You can search for similar articles on tips and guides. Thank you for reading and for following us regularly.