

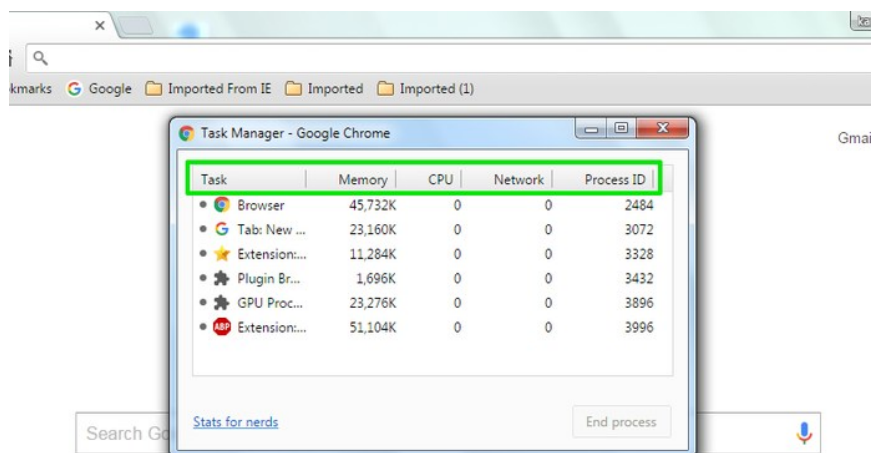
6 useful features on Chrome browser users should know

Chrome browser is one of the best and most popular browsers today. Although designed as compact as the back there are hundreds of hidden features to help you browse the Web faster.

Chrome browser is one of the best and most popular browsers today. Although designed as compact as the back there are hundreds of hidden features to help you browse the Web faster.



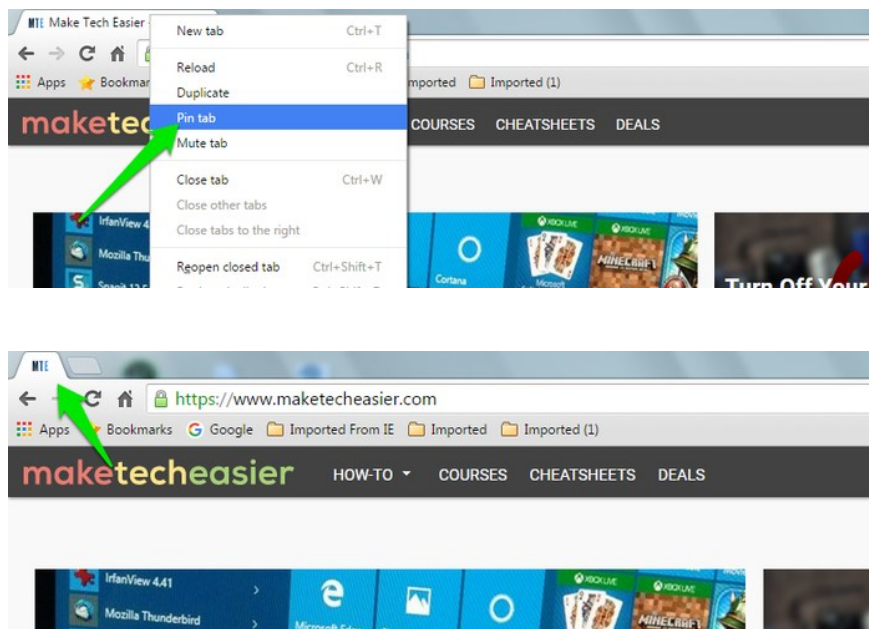
1. Chrome Task Manager



On the Chrome browser is also integrated Task Manager as on Windows operating system. Here you can see how each card or extension (extension) takes up memory, CPU, Network, GPU memory and JavaScript memory.

To access Chrome Task Manager, press **Shift + Esc** on any Chrome browser window.

2. Pin Tab



Chrome lets you pin tabs on the left side of the window like a small tab that only displays the website's icon. This saves a lot of tab space on the Chrome browser.

You can use this feature to pin the tabs you want to open and focus on the new tabs you're browsing.

To pin a tab, just right-click the tab you want to pin then select the **Pin tab** option on the Menu.

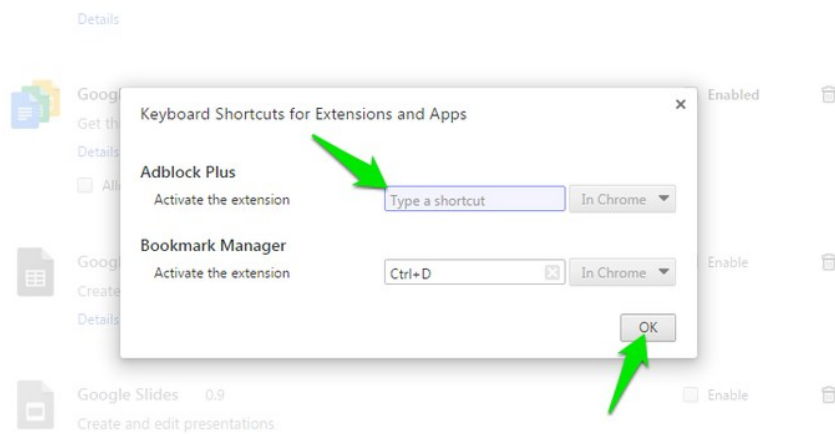
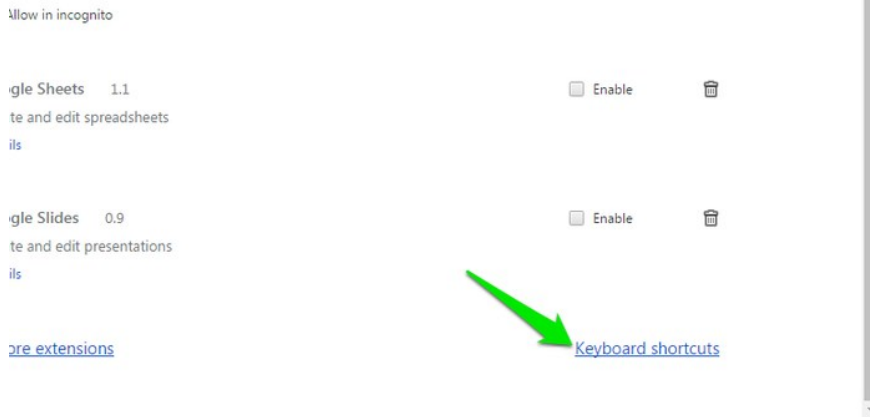
3. Shortcuts to specify extensions (extension)

Chrome allows you to specify a dedicated shortcut to easily use any of the main functions of the extension without having to press the button in the address bar.

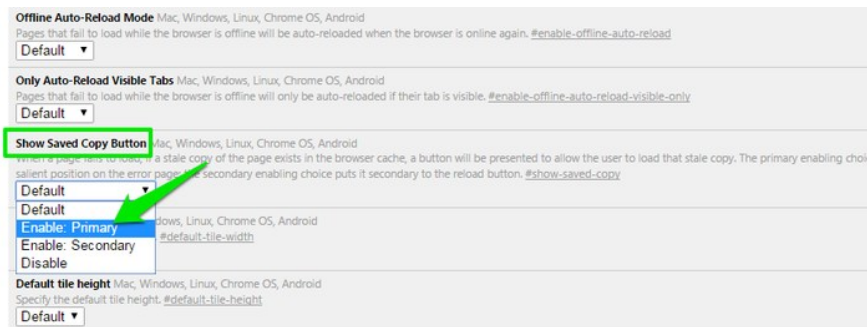
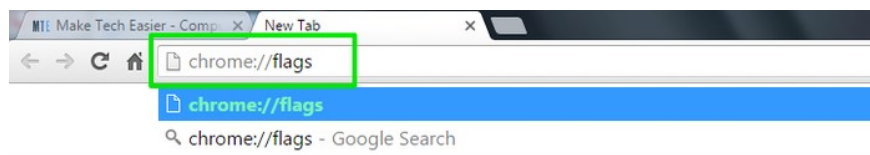
This gives you faster access, and there's no need to open the address bar extension.

Go to Main Menu => **More tools** (other tools) => **Extensions** then scroll down to the bottom of the page.

Here you find the **Keyboard shortcut** option and click on that option, select the shortcut specified for the extension you want.



4. Enable Offline browsing mode (Chrome Offline)



You can enable Offline Web browsing on Chrome browser to browse any Web page even without an Internet connection.

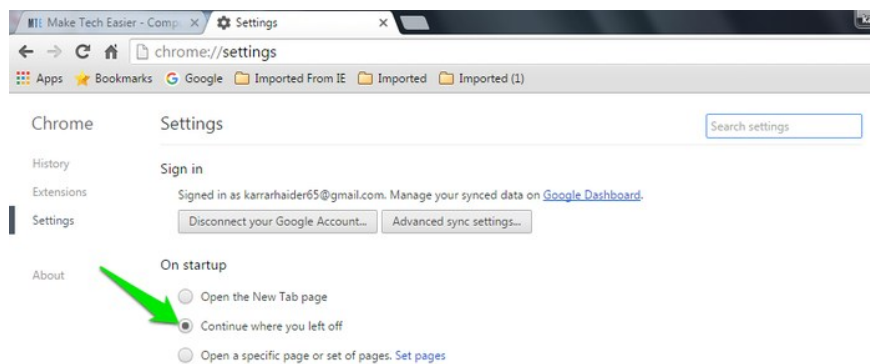
Enter **chrome: // flags** and press Enter.

At this time on the screen appears a window to change Chrome browser settings.

Here you find the **Show Saved Copy Button** option and activate that option and then restart Chrome browser.

After activating Offline Web browsing on Chrome browser, you can access any Web page and Chrome will automatically save the content of the web pages you have visited so that it can then be downloaded and displayed. Remake the content of these websites even without an Internet connection.

5. Continue at the page you have closed

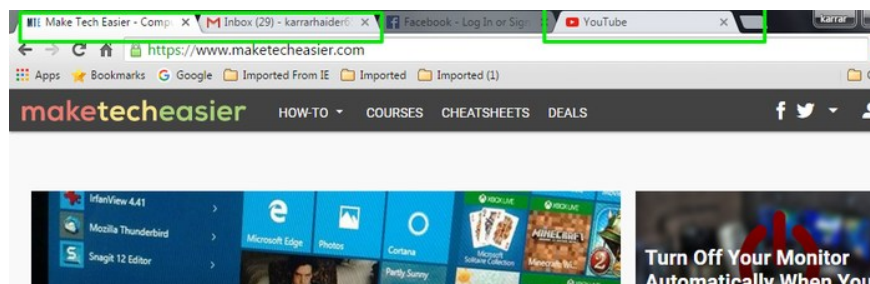


You can set the Chrome browser to always open at the page you have closed, including all open tabs when you click on the icon to close the Chrome browser.

Click on the 3 dash line icon in the top right corner, select **Settings** .

On the Settings interface, click the option **Continue where you left off** under the **On startup** section.

6. Select multiple tabs to move



Instead of dragging and moving one tab to another tab, you can select multiple tabs at once and move tabs. Just press and hold the **Ctrl** key then click on the tab you want to select. After selecting the tabs, release your hand from the Ctrl key and move the tabs to the position you want.

Refer to some of the following articles:

1. **5 Chrome extensions to help you surf the Web faster**
2. **Trick to improve browsing speed with Chrome browser**
3. **These are the reasons why you should use a 64-bit Chrome browser**
4. **Enable Web browsing mode without Internet connection on Chrome**

Good luck!

You finished reading the article "**6 useful features on Chrome browser users should know**" edited by the [TipsMake](#) team. We hope this article has provided you with many useful tech tips and tricks. You can search for similar articles on tips and guides. Thank you for reading and for following us regularly.