

6 simple ways to find the fastest computer IP address

Check IP addresses with simple IP views in this article, help you know the exact IP address of your computer quickly.

Check IP addresses with simple IP views in this article, help you know the exact IP address of your computer quickly.

IP address (or Internet protocol address) used to identify network computers and devices on a network. When computers communicate with each other on the Internet or an intranet, they send information to each other's **IP address** . If you don't know how to find the IP address on your computer. The following article The network administrator will introduce you and show you how to find and check the fastest **IP address** on your computer.

The ways to search IP are listed in the article:

Use a search engine

View IP in Router configuration

Use the command on Cmd of Windows

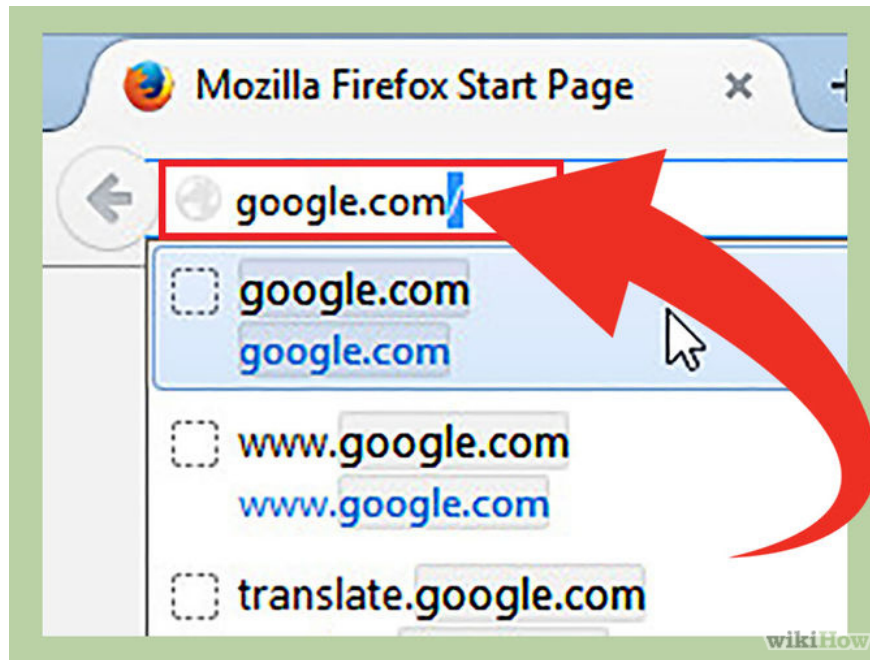
View IP in Network Connection Details

How to check IP addresses on Linux

View IP on IP site

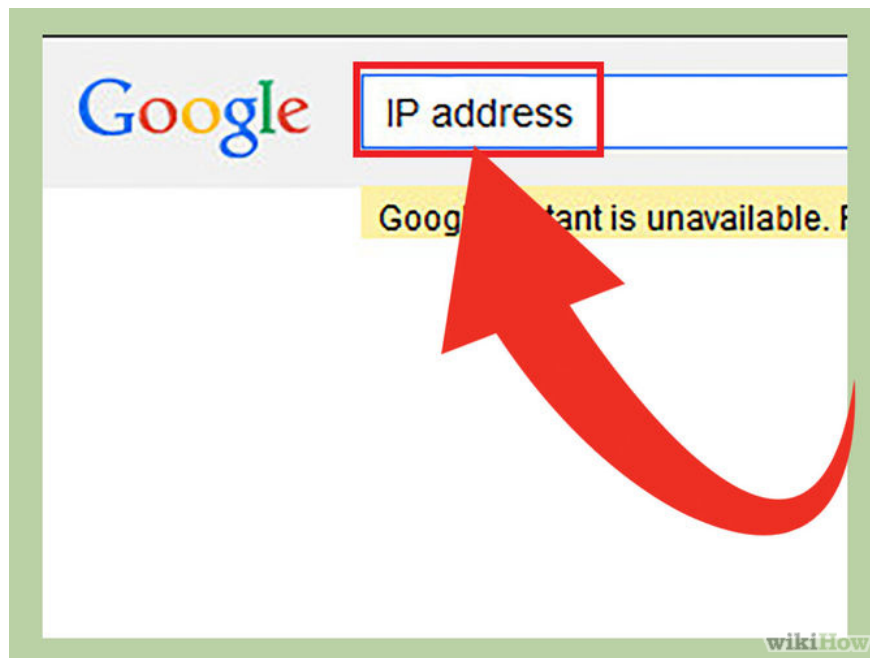
Method 1: Find the Public IP address using the search engine

Step 1: Open Bing or Google



Bing and Google are two search engines that allow you to find **IP addresses** , external IP addresses (external IP addresses) or **IP Public** quickly and easily. Your **router** address or **modem** address is also displayed here.

Step 2: Type IP Address in the search toolbar



Type **the IP address** on the search toolbar and then press **Enter** to search. This way only applies on **Google, Bing, Ask, DuckDuckGo** and some other search engines. Note this way does not apply on **Yahoo** .

Step 3: Search your IP address



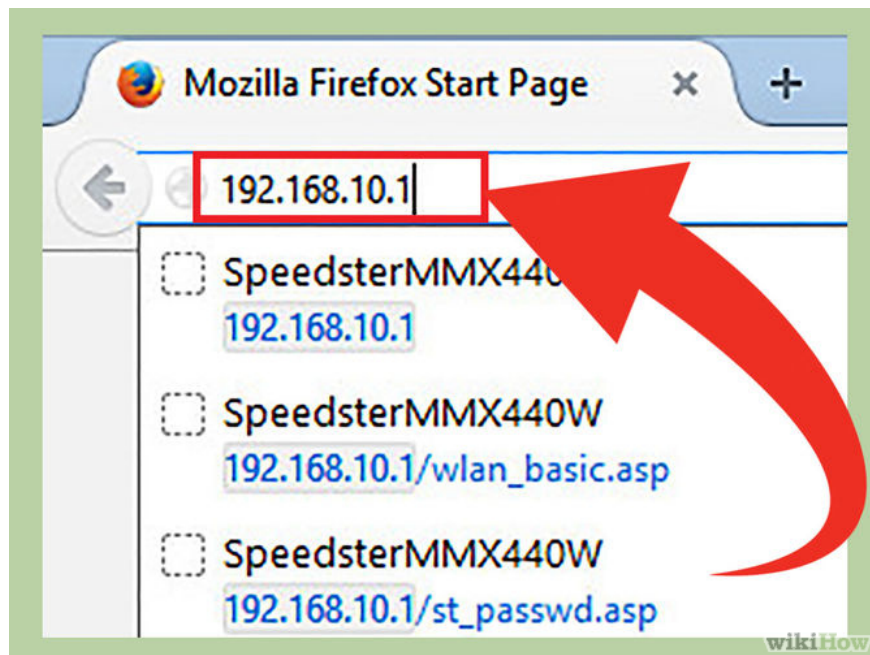
Your public IP address will display on the first search result. If you are using Ask , your **Public IP address** will display at the top of the **More Answers** section (another question).

Your public IP address is a sequence of 4 integers separated by dots. For example, 199.27.79.192.

If you do not know how to view the IP address on your computer, phone or tablet, refer here.

Method 2: Find your Public IP address on the Router settings

Step 1: Open your Router configuration page

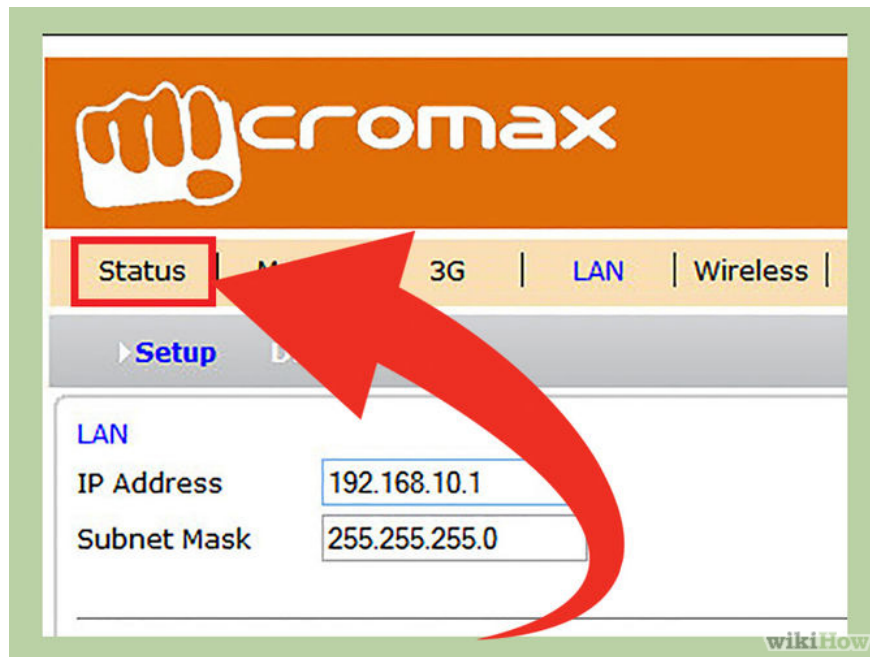


Most of your **routers** are accessed via **Web Interface**. When accessing this website You can adjust your **Router** configuration here.

Open **Web Interface** by entering your **Router IP address** in the **Web** browser. Then check your **Router IP address** . Usually there are some common **Router IP addresses** like:

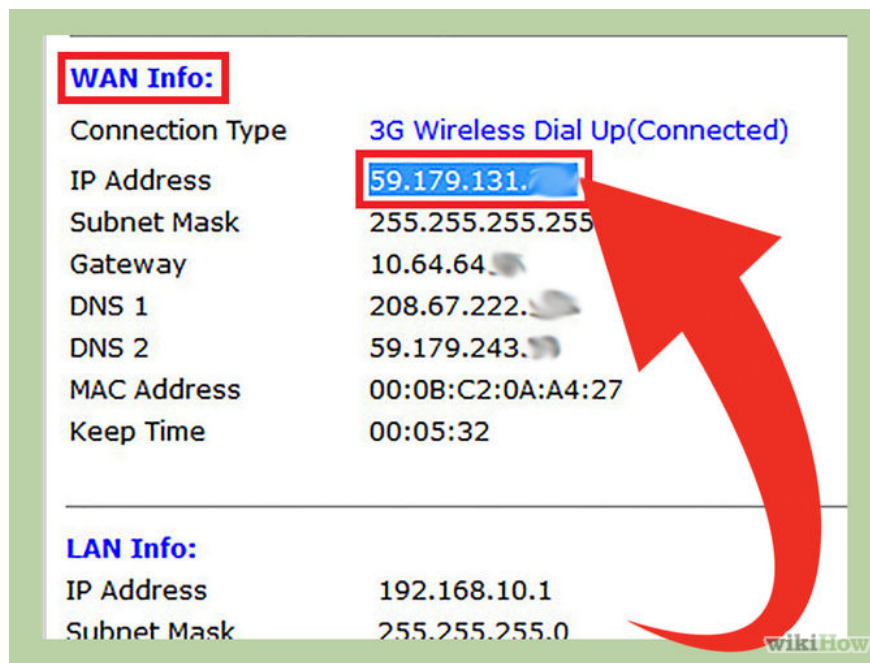
1. 192.168.1.1
2. 192.168.0.1
3. 192.168.2.1

Step 2: Open Router Status, Internet or WAN page



Open the **Router Status, Internet** or **WAN page** to find **the Router** 's external external IP address. You can search for external IP address (external IP address) on sites such as **Internet, Router Status** or **WAN (Wide Area Network) Status** .

Step 3: Find your IP address

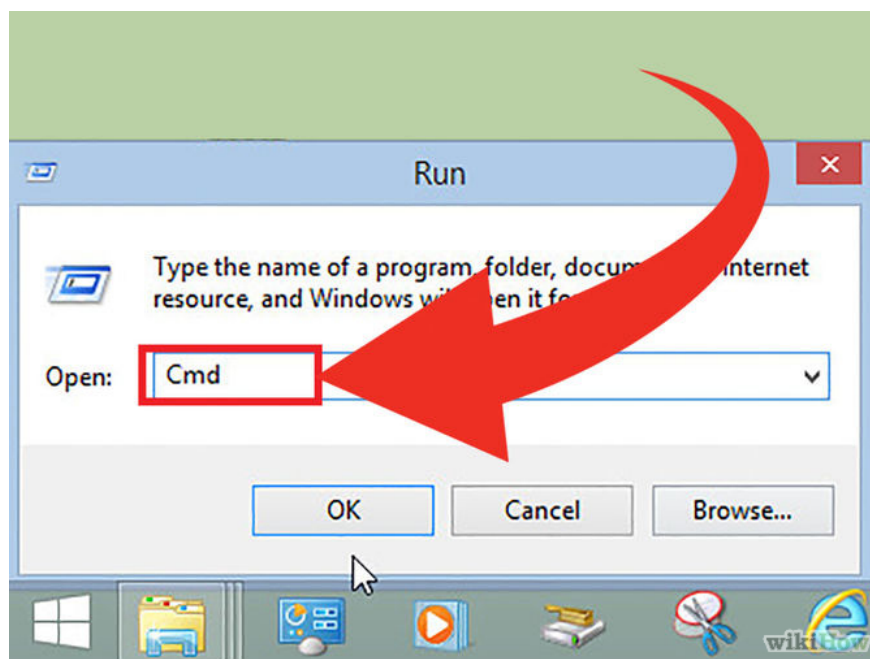


On **Router Status**, **Internet** or **WAN** pages that you have just opened, you will see your **IP address** under "**Internet Port**" (Internet port) or "**Internet IP Address**" (Internet IP address).

Your **IP address** is a sequence of 4 integers separated by dots. Example **199.2.7.79.192**.

Method 3: Find a Private IP address on Windows using Command Prompt

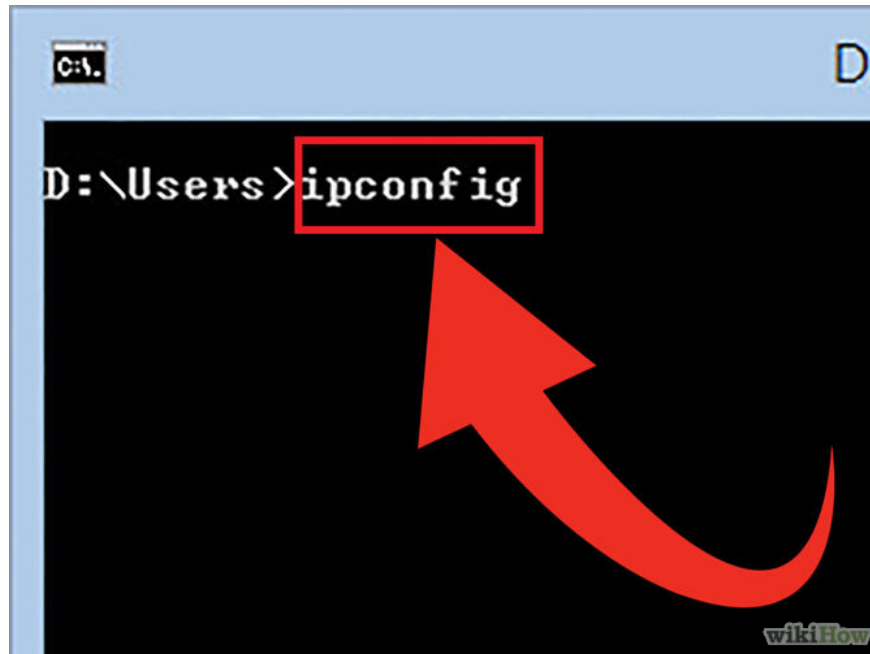
Step 1: Open Command Prompt



Press **Windows + R** key combination and type **cmd** in the **Search** box. Then press **Enter** to open the **Command Prompt**.

For **Windows 8** , press **Windows + X** key combination and select **Command Prompt** on the **Menu** .

Step 2: Run the command "ipconfig"



Type **'ipconfig'** then press **Enter** . On the screen you will see a list of network connection information. All networks connected to your computer will be displayed here.

Step 3: Find your IP address

```
D:\Windows\system32\Cmd.exe

D:\Users>ipconfig

Windows IP Configuration

PPP adapter mtnl:

Connection . . . . . :
IPv4 Address . . . . . : 59.179.133.99
Subnet Mask . . . . . : 255.255.255.255
Default Gateway . . . . . : 0.0.0.0

Ethernet adapter Tunngle:

Media State . . . . . : Media disconnected
Connection-specific DNS Suffix . . . . . :

Ethernet adapter Local Area Connection:

Media State . . . . . : Media disconnected
Connection-specific DNS Suffix . . . . . :

Ethernet adapter Ethernet:

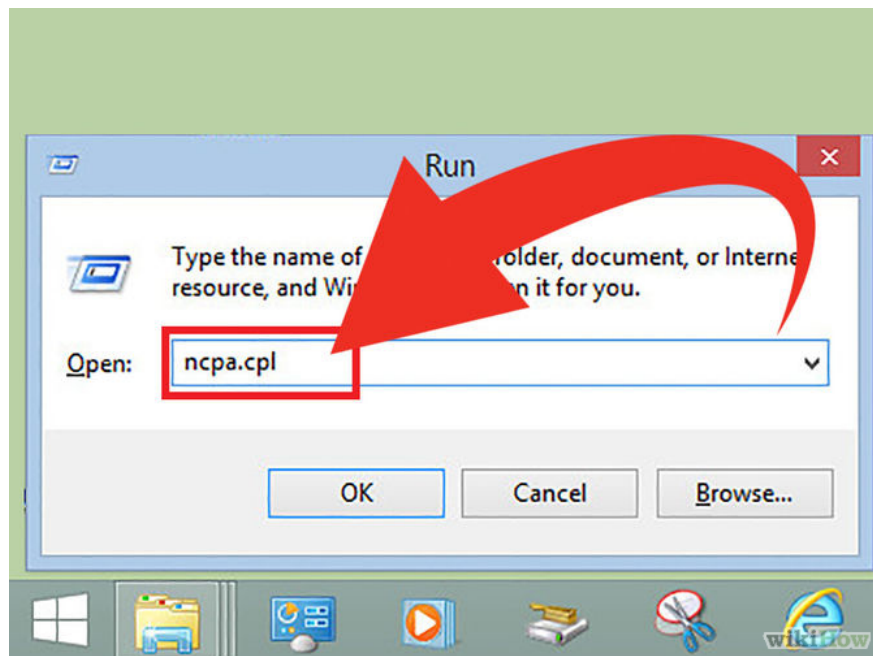
Media State . . . . . : Media disconnected
```

You will see your **IP address** in the **IPv4 Address address** line below the connection type name.

Your **IP address** is a sequence of 4 integers separated by dots, such as **192.168.1.4** .

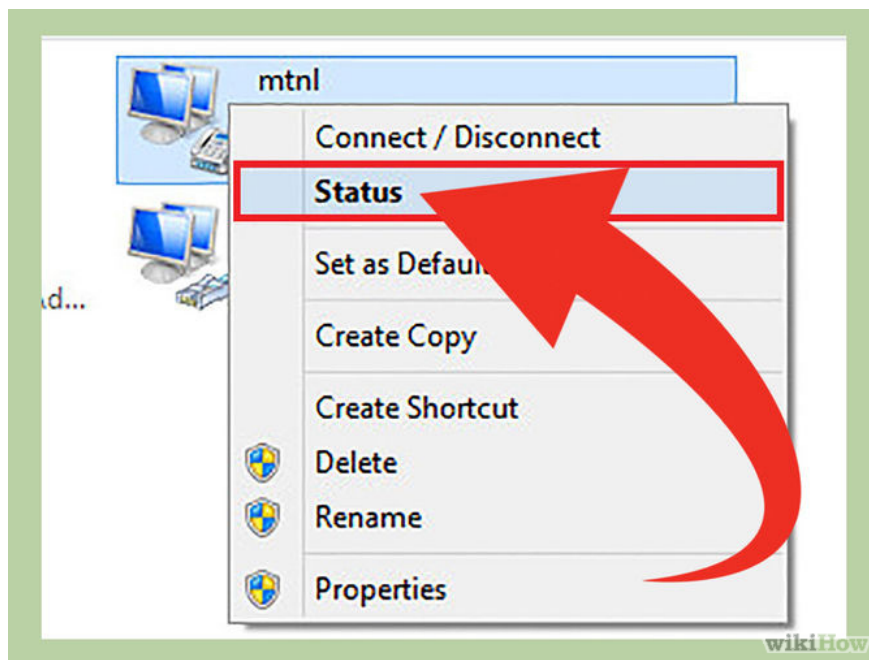
Method 4: Find a Private IP address on Windows using Network Connections

Step 1: Open Network Connections



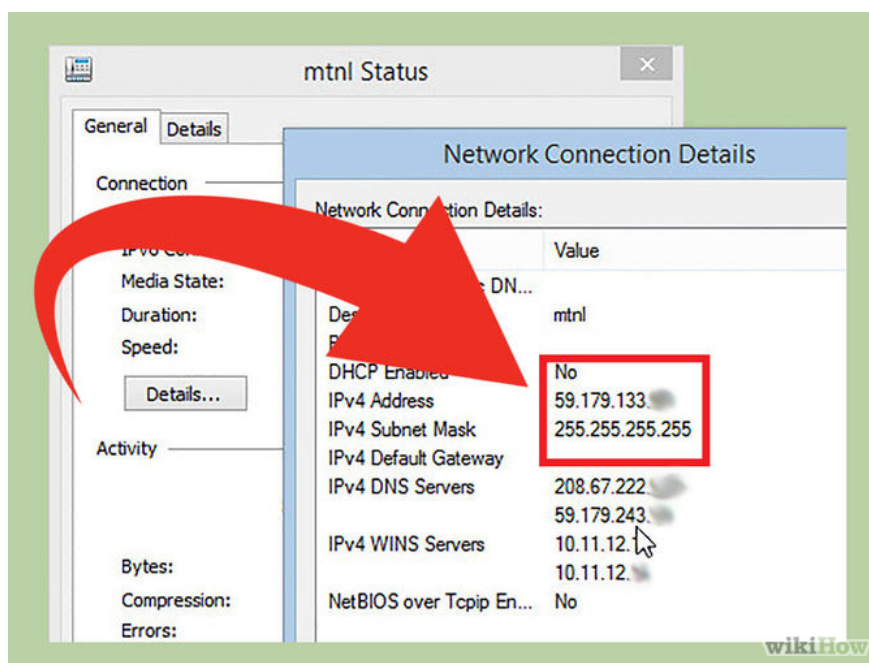
The fastest way is to press the **Windows + R** key combination and type **ncpa.cpl** . Then press **Enter** to open the Network Connections window.

Step 2:



Right-click **Active connection** (connection is active). Then select **Status** . A Status window displays your current network configuration and connection status. If you are using **Windows XP** , click on the **Support** tab.

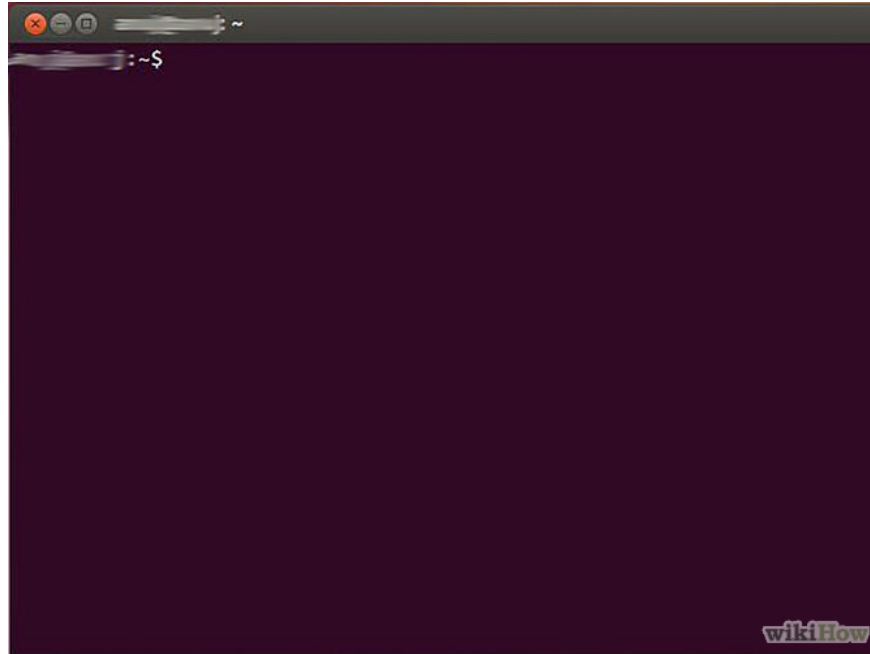
Step 3: Open the Network Connection Details window



Click to select **Details** . A **Network Connection Details** window appears. Your internal IP address (internal IP address) will be displayed in "IP Address" (IP address) or "IPv4 Address".

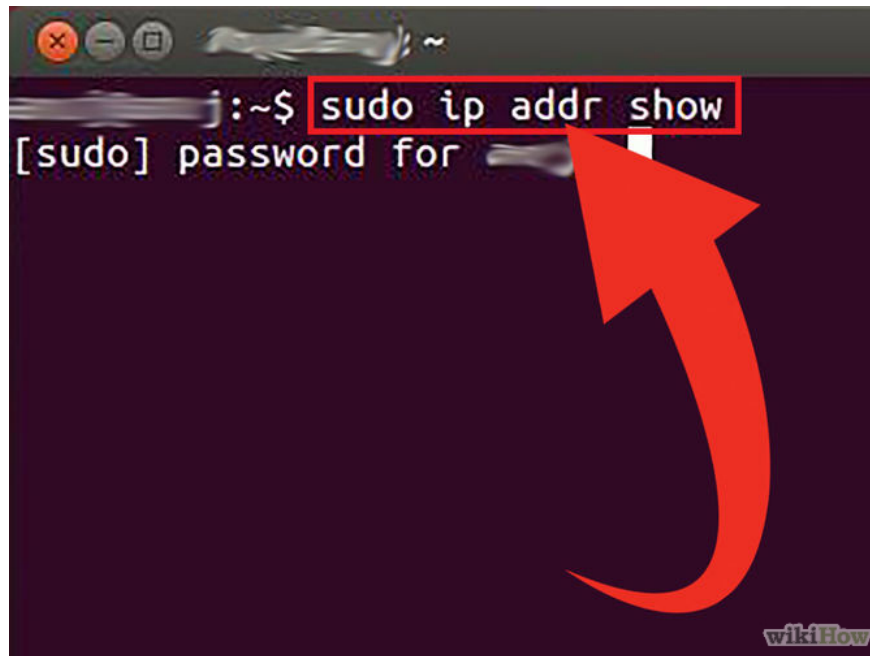
Method 5: Check Private IP address on Linux

Step 1: Open Terminal



You can check **the** internal IP address on **Linux** with the **Terminal** command. Access the **Terminal** by pressing **Ctrl + Alt + T**.

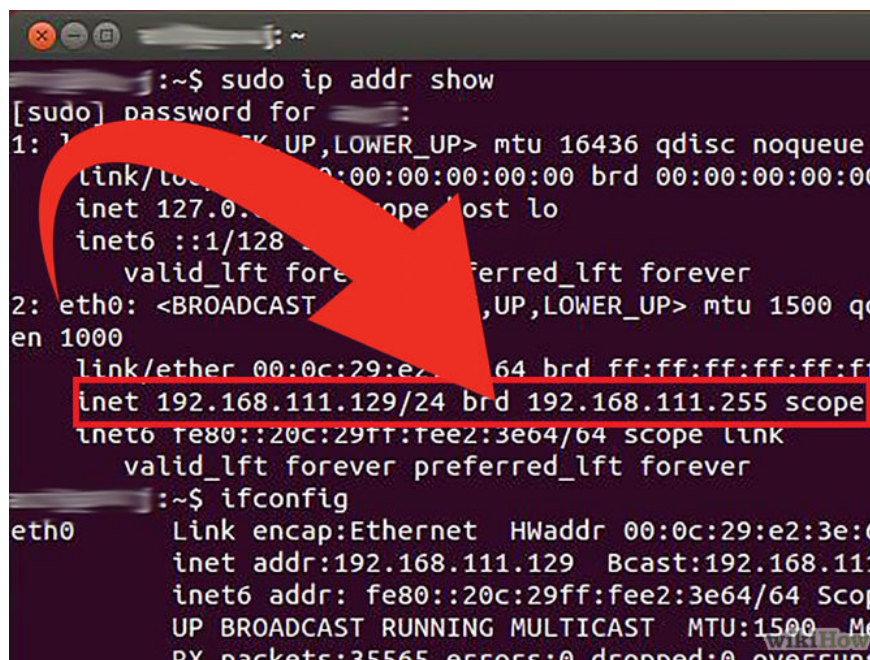
Step 2: Enter one of the IP configuration commands



To display your **IP address** you can use 2 different commands.

1. **sudo ip addr show** : For this command you need to enter the **Admin** password and then use this command.
2. **/sbin/ifconfig**: For this command you will receive a message saying that you do not have **Admin** rights. Then type **sudo /sbin/ifconfig** and enter the password.

Step 3: Find your IP address



Each command will display detailed information of all connections installed on your computer. Your task is to find the connection you are using.

Your internal IP address (internal IP address) is a sequence of 4 integers separated by dots. For example, 192.168.1.4.

Method 6: Find your IP address on Websites IP

FindUrlIP
.COM

What is my IP Address?

YOUR IP IS

134.255.255.1

[click ME to SELECT \(and press CTRL + C to copy\)](#)

You can access one of the links below to search for your computer's **IP address** .

1. What is my IP
2. What is my IP Address

Good luck!

You finished reading the article "**6 simple ways to find the fastest computer IP address**" edited by the [TipsMake](#) team. We hope this article has provided you with many useful tech tips and tricks. You can search for similar articles on tips and guides. Thank you for reading and for following us regularly.