

6 easy ways to enter passwords into Chrome

Did you just switch to Google Chrome? If so, one of the first things you'll want to do is enter your current password into Chrome. Fortunately, the browser actually allows you to import passwords from a saved CSV password file or from other browsers installed on your computer.

Either way, it's easy to type a password into Chrome. Today's article will show you a few different ways to accomplish this.

1. Enter your password directly into your Google account

The easiest way to enter passwords in Chrome is to enter them directly into the Google account you're signed in to. To do that, you will need a CSV file containing the saved passwords. Once you have the CSV file, follow the steps in the tutorial: [How to import passwords from CSV files into Google Chrome](#).

The steps above will add all the passwords to your Google account. Use that account to sign in to Chrome and they'll start autofilling.

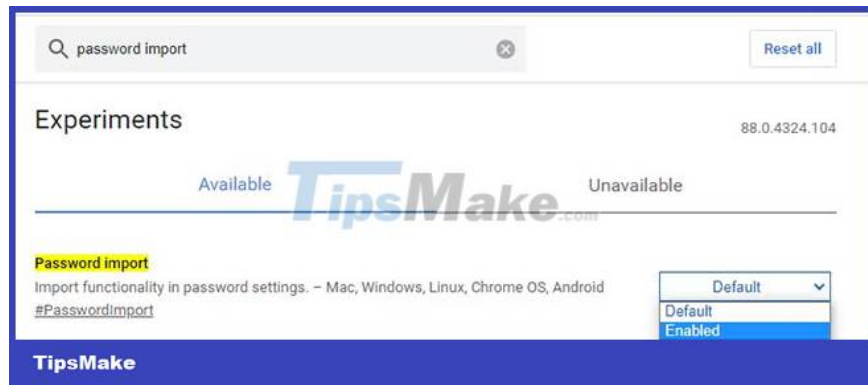
2. Turn on the flag and enter the password in Chrome

Although Chrome includes the option to import a backup CSV file containing your saved passwords, this option is not visible by default.

You need to visit Chrome's flags page, which allows you to enable and disable various experimental features. Here you can enable password input in Chrome, among many other best Chrome flags.

Follow these steps to easily enable flags and import passwords into Chrome from a CSV file:

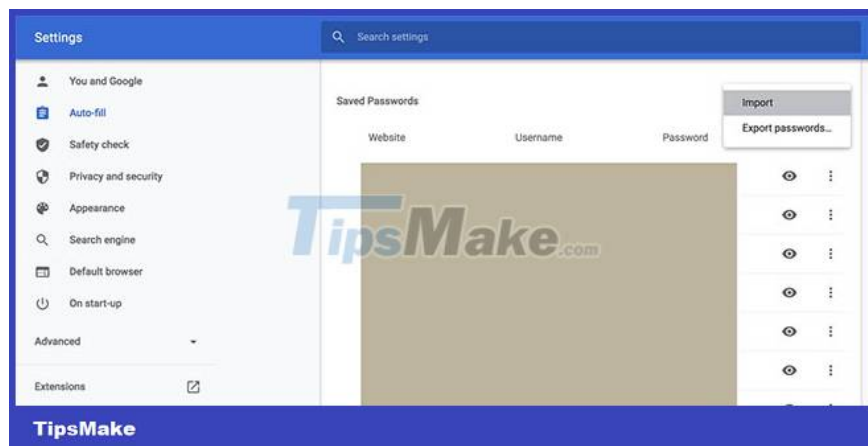
1. Launch Chrome on your computer.
2. Type the following in the address bar and press **Enter** :
`chrome://flags`
3. On the flag screen, put the cursor in the search box and enter **Password import**.
4. You will see the **Password import** flag in the search results.
5. To enable this flag, click the drop-down menu next to the flag and select **Enabled**.



6. Click **Relaunch** at the bottom to relaunch Chrome. This will restore all your open tabs.

7. Once Chrome opens, click the three vertical dots in the top right corner of Chrome and select **Settings**. In the left sidebar, click **Autofill**. Then, on the right pane, click **Password Manager**.

8. Click the three dots next to **Saved Passwords** and select **Import**.



9. Navigate to your CSV password file and select it to import into Chrome.

3. Enter passwords in Chrome with a password manager

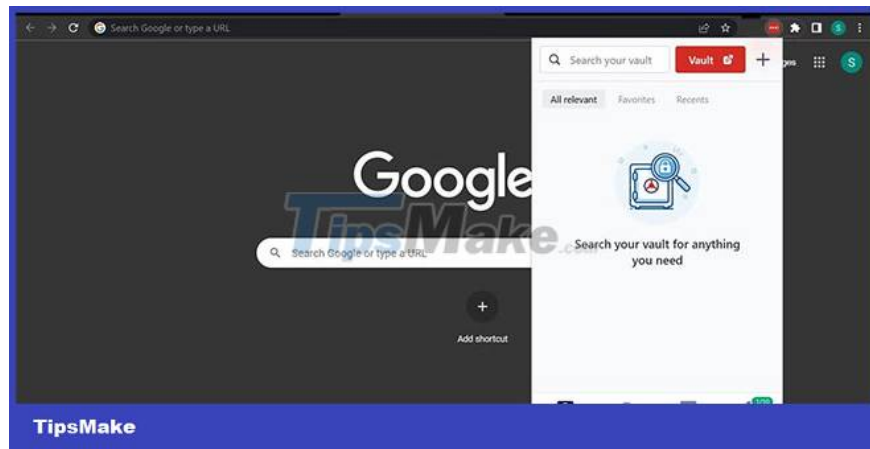
Another clever way to import passwords from one browser to another is to use a password manager extension. Choose whichever best password manager extension you want and install it on the browser where you want to enter the password, in this case Chrome.

This tutorial is using LastPass, a trusted password manager. Which tool to use is up to you. Have your CSV file ready as you will need to use it to enter your password.

After downloading the CSV file and adding the extension, follow these steps:

1. On the Chrome toolbar, click the LastPass extension icon.

2. In the extension menu, click the **Vault button**.



3. In the left sidebar, click **Advanced Options**.

4. Then click **Import**.



5. Select the browser that currently stores your passwords or from the browser where you want to import them into Chrome.



6. Using the upload box, upload the downloaded CSV file.

7. Select the passwords you want to enter and deselect the ones you don't want.

8. Then click **Import all**.



When you enter a password into the password manager, you don't need to re-enter it when you switch browsers. You just need to install the extension on another browser, it will auto-populate all the saved passwords. This is the most important benefit of using a password manager, which you cannot enjoy with other methods.

4. Use the command to enter the password into Chrome

Another way to enter a password into Chrome is to use the command. There is a command that activates the import option in Chrome. You can use this to import your passwords into Chrome from a CSV file.

This works on both Windows and Mac computers, but the process is a bit different. Here, the article will explain how to do it on both operating systems.

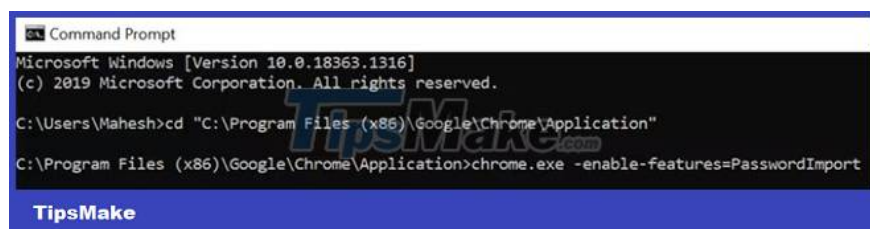
Enter password in Chrome on Windows

1. Open the **Start** menu , search for **Command Prompt** and launch it.
2. Type the following command into the Command Prompt window and press **Enter**. This takes you to Chrome's executable file on your PC.

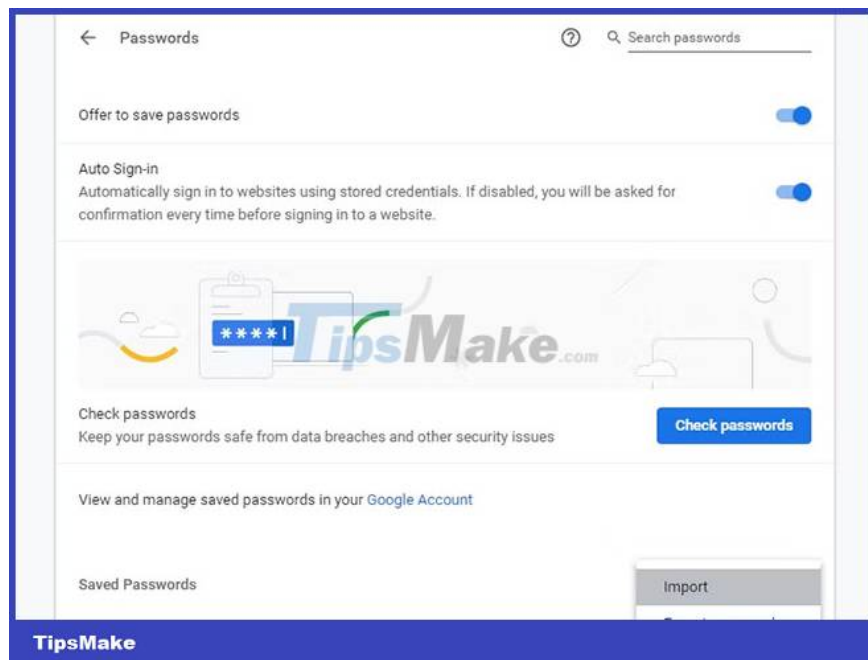
```
cd "C:\Program Files (x86)\Google\Chrome\Application"
```

3. Then, type the following command and press **Enter**. This will enable hidden password input in Chrome. Then Chrome will launch automatically.

```
chrome.exe -enable-features=PasswordImport
```



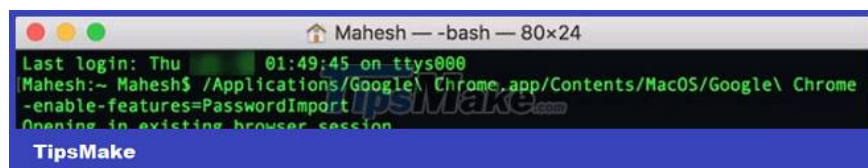
- Once Chrome opens, click the three vertical dots in the top right corner of Chrome and select **Settings**. In the left sidebar, click **Autofill**. Then, on the right pane, click **Password Manager**.
- Click the three dots next to **Saved Passwords** and you will see an Import option . Select this option to enter your password into Chrome.



Enter Passwords into Chrome on macOS

- Click **Launchpad** on the Dock, search for **Terminal** and open it.
- Type the following command into Terminal and press **Enter**. Then Chrome will automatically open.

```
/Applications/Google Chrome.app/Contents/MacOS/Google Chrome -enable-features=Pa
```



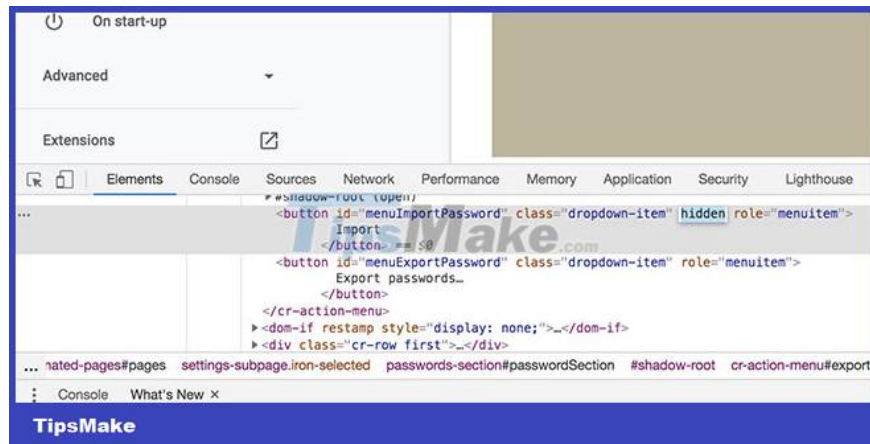
- Once Chrome opens, click the three vertical dots in the top right corner of Chrome and select **Settings**. In the left sidebar, click **Autofill**. Then, on the right pane, click **Password Manager**.
- Click the three dots next to **Saved Passwords** and select **Import**.

5. Enable Hidden Input Option in Chrome

One of the many ways to enable Chrome's import option is to temporarily change the code of the Settings page. This way you only need to change the value of an element and the import option will appear.

Here's how you use this method:

1. Open Chrome on your Windows or Mac computer, click the three dots in the top right corner and select **Settings**.
2. Click **Passwords** on the following screen to go to your password section.
3. Click the three dots next to **Saved Passwords** and you will see **Export passwords**. Right click on this option and select **Inspect**.
4. From there, you will see the source code of the current page.
5. Find the element with the menu ID `ImportPassword` , remove the word *hidden* from the code and press **Enter**.



6. Click the three dots next to **Saved Passwords and the Import** option will appear. Click it to enter your password into Chrome.

Unlike the flag method above, this is not a permanent change. You need to change the code every time you want to display the input option.

Since you only enter your password once in a while, this shouldn't be a big deal for most people.

6. Enter Firefox password into Chrome

If you're switching from Firefox to Chrome, you don't need to enter or export your password manually. There is an option in Chrome that allows you to automatically pull all your information from Firefox.

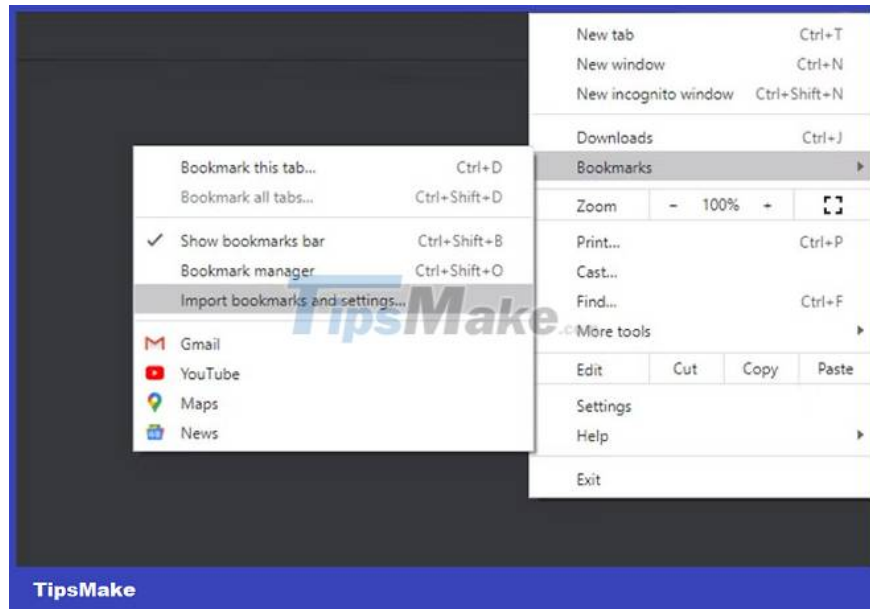
To use this method, both browsers must be on the same computer. Alternatively, you can use this method on both Windows and macOS.

This option allows you to transfer the following data from Firefox to Chrome:

1. Browsing history
2. Favorites/bookmarks
3. Saved Passwords
4. Autofill form data

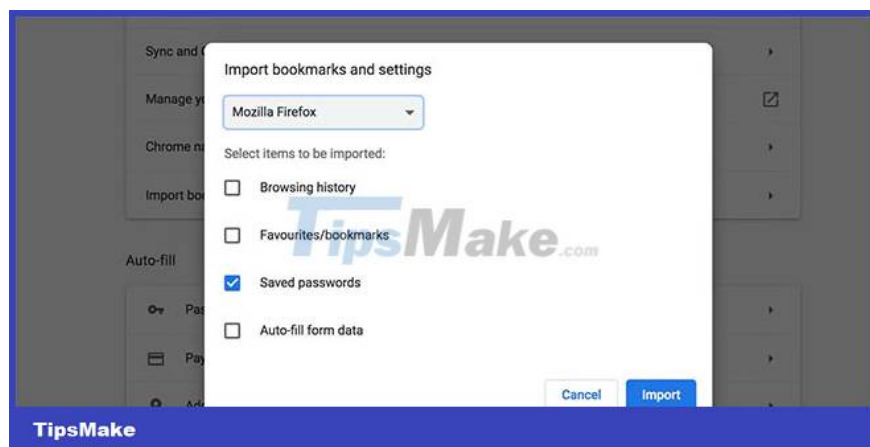
Here's how to use the method:

1. Launch Chrome, click the three dots in the top right corner and select **Bookmarks > Import Bookmarks and Settings** .
2. Select **Mozill**



a **Firefox** from the drop-down menu.

3. Tick **Saved passwords** if you only want to enter your Firefox password. You can tick other options if you want.



4. Click **Import** and Chrome will start importing your Firefox password.
5. Click **Done** when your password is entered.

This method also allows you to import passwords from other browsers, including Microsoft Edge.

You finished reading the article "**6 easy ways to enter passwords into Chrome**" edited by the [TipsMake](#) team. We hope this article has provided you with many useful tech tips and tricks. You can search for similar articles

on tips and guides. Thank you for reading and for following us regularly.
