

5 ways to turn off safe mode on Android phones

Android users can sometimes find it annoying with safe mode on their devices. This article will give you how to turn off anyf mode easily.

Tipsmake once had a tutorial on How to enable Safe Mode on Android. However, during use, many users may not feel comfortable with this mode. So learn immediately how to turn off this safe mode on Android devices through the article below.

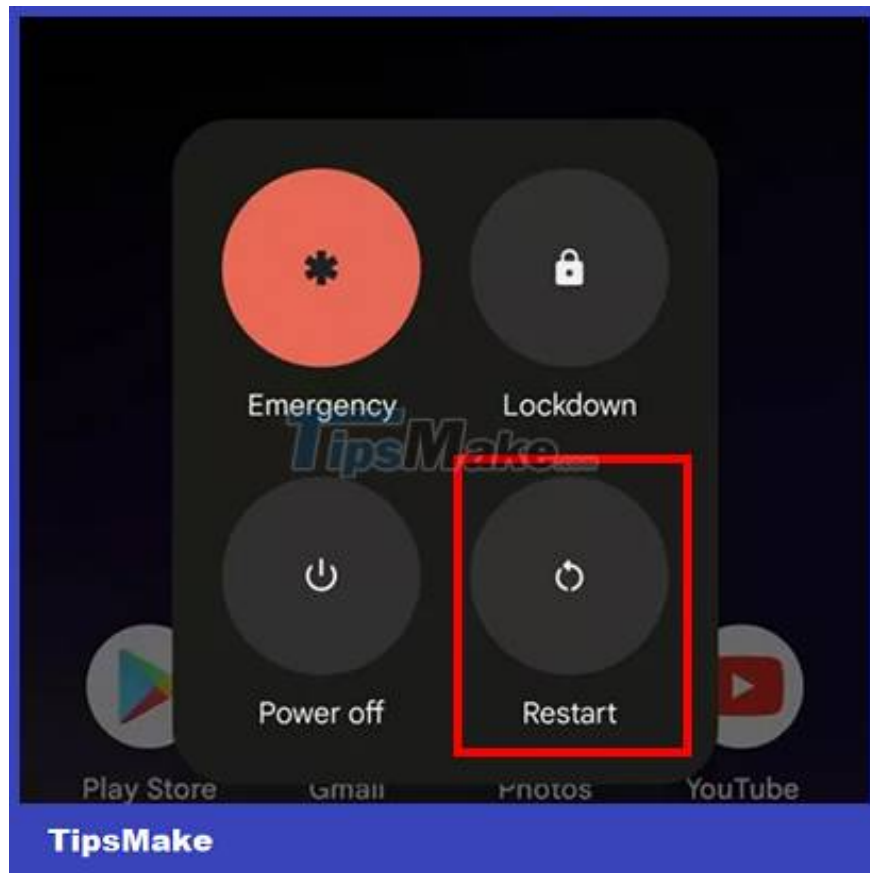
Note: The instructions in this article were made on a Google Pixel 4a 5G running Android 12. Operations on other Android devices using other operating systems may be slightly different.

There are currently **5 ways** for you to turn off safe mode on your Android device. As follows:

Method 1: Restart the device

Restarting the phone can fix many errors on the phone, and canceling Safe Mode is no exception. Please do the following:

1. Hold down **the Power button** on your phone for about 5 seconds.
2. Several modes appear, select **Restart**.



In case you don't see the Restart button, press and hold **the Power button** for about 30 seconds. Your Android phone will be forced to restart when this action is performed.

Method 2: Handling applications that generate errors

If Safe Mode accidentally gets something you didn't want it to be, chances are you've got a problem with one of the apps you're using. This is when you need to find the culprit and then proceed to disable Android safe mode.

While you can't use third-party apps when Safe Mode is on, app cache and data won't be blocked in your device settings. So you need to deal with the app itself instead of constantly restarting your phone.

First of all, you need to find the culprit, if you already know which application is causing the problem, deal with it directly. If you don't know which one, follow the steps below for apps you recently installed. There will be 3 directions for you to solve the problem: clear cache, clear app data and uninstall apps.

How to clear cache

1. Open **Settings**
2. Tap **Apps** and select **See all apps**.
3. Select the app that is causing your device problems.
4. Select **Storage & cache**.
5. Click on **Clear cache**.



Apps

Assistant, recent apps, default apps



Notifications

Notification history, conversations



Battery

86% - More than 2 days left



Storage

19% used - 103 GB free



Sound & vibration

Volume, haptics, Do Not Disturb



Google Play Store

8 min. ago



Google

8 hr. ago

> See all 72 apps

General

Default apps

Chrome, Phone, and Messages

TipsMake

WhatsApp



Open



Uninstall



Force stop

Notifications

-0 notifications per week

Permissions

Contacts, Files and media, and Nearby devices

Storage & cache

78.09 MB used in internal storage

TipsMake



If this doesn't work, try the next one. Note that clearing the app's memory will delete the cache and user data. You will need to set up the information for the application again. However, this can help you fix the error and get out of safe mode.

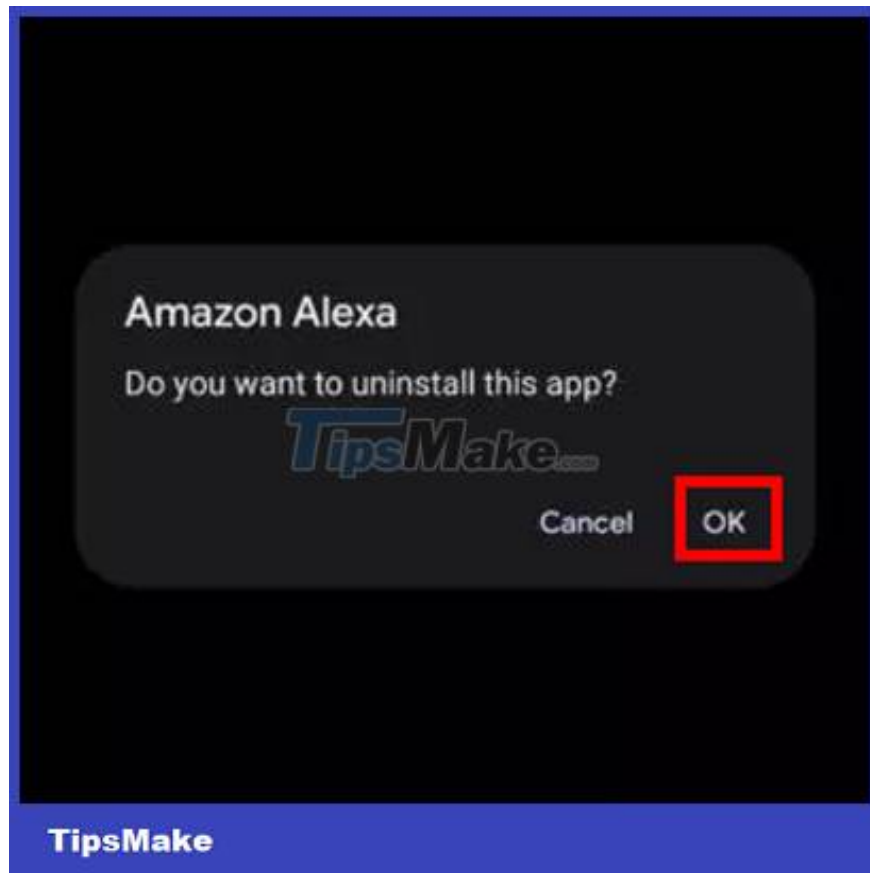
How to clear app data

1. Open Settings.
2. Tap Apps and select See all apps.
3. Select the app that is causing your device problems.
4. Select Storage & cache.
5. Tap Clear cached data.



How to Uninstall Apps

1. Look for the app that's causing the device problem in the menu.
2. Long press on the app.
3. Drag it to **Uninstall**.
4. Click **OK** to confirm.



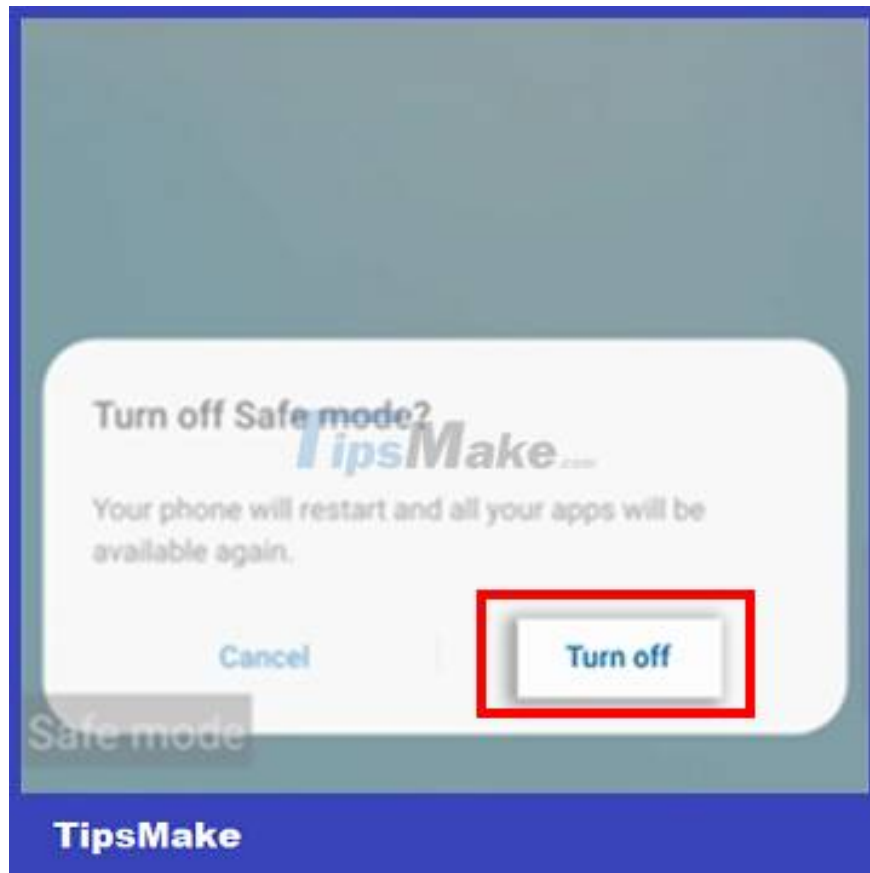
Method 3: Check your phone's notification bar

On some Android devices, you can turn off safe mode through your phone's notification bar. To do this do the following:

1. Swipe the screen down from the top to open the notification bar.



1. If your phone supports this feature, there will be a status line Safe Mode is on.
2. Click on this notification line and select **Turn off**.

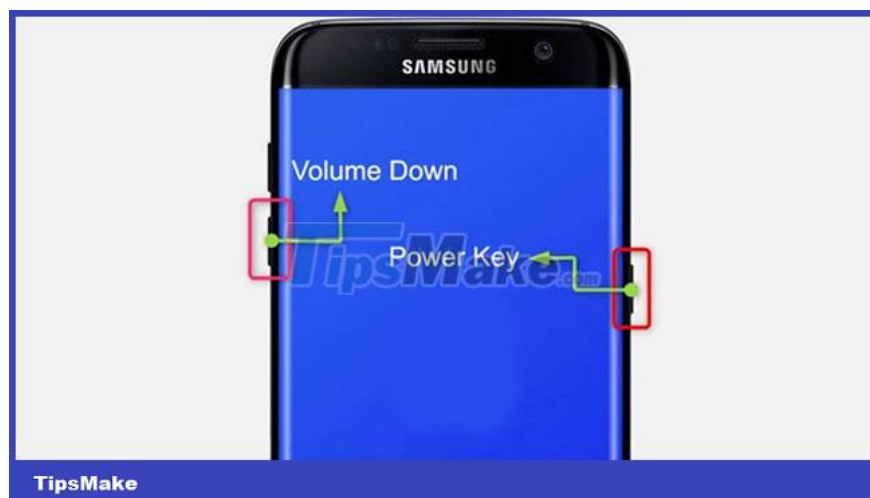


1. Your phone will automatically reboot and turn off safe mode.

Method 4: Use the physical keys of your Android phone

In case the above methods do not work, you can apply the method below. There have been many users exiting safe mode through this way.

1. Turn off your phone.
2. With your phone off, press and hold **the Power and Volume Down buttons.**



1. This will navigate the phone to recovery mode.
2. Once in this mode, use the volume button to navigate to the **Start section**.
3. Then press **the Power button** and the phone will be rebooted.

Your Android phone will exit safe mode.

Method 5: Restore factory settings

Your last option is to do a factory reset. This will erase all data on your phone, so make sure you've tried everything to no avail before going to this solution. Also, please sync data to storage platforms before performing a factory reset.

1. To restore factory settings you need:
2. Open the Settings section.
3. Scroll down and select System.
4. Tap on Reset option and select Erase all data (Factory Reset).
5. Tap Clear all data at the bottom.
6. Depending on your phone, you may need to enter your device PIN, pattern, or password.
7. Confirm again by clicking Clear all data.

Hopefully through these **5 ways to turn off safe mode on your Android phone**, you were able to get rid of it on your phone.

You can also read how to turn off safe mode on Samsung phones.

You finished reading the article "**5 ways to turn off safe mode on Android phones**" edited by the [TipsMake](#) team. We hope this article has provided you with many useful tech tips and tricks. You can search for similar articles on tips and guides. Thank you for reading and for following us regularly.