

5 Ways to Fix Api-Ms-Win-Crt-Runtime-L1-1-0.Dll Error

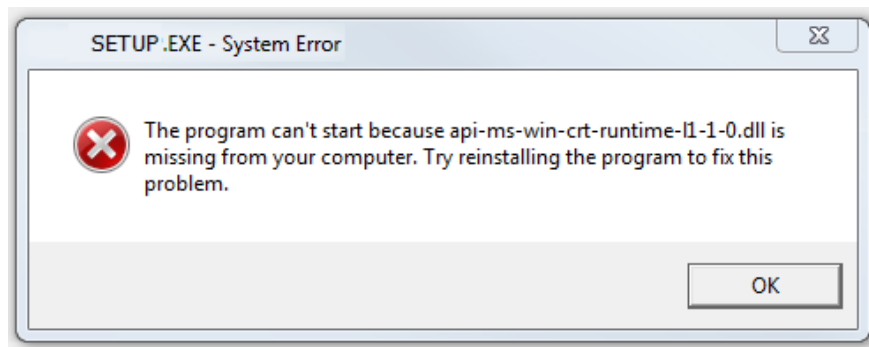
When using a computer, you will encounter interruptions in opening a program on Windows. Let Hoang Ha PC fix the error api-ms-win-crt-runtime-l1-1-0.dll on Windows

What is api-ms-win-crt-runtime-l1-1-0.dll error? What causes the error?

To know how to fix **api-ms-win-crt-runtime-l1-1-0.dll** error on Windows, you need to find out what this error is. Simply put: as a DLL file, **api-ms-win-crt-runtime-l1-1-0-dll** is provided to Windows by the **Microsoft system**. **Api-ms** will be displayed on the screen when you start a software in Windows. This message indicates that the DLL file being accessed is corrupted or no longer on the computer.

DLL (Dynamic Link Libraries) includes external software that runs on some other operating systems or Windows. In case the code is stored differently in the files, it will lead to the applications becoming incomplete. At the same time, the DLL file missing message appears when the software and operating system do not have DLL.

This error will appear when trying to open some application software like Command line " **The program can't start because api-ms-win-crt-runtime-l1-1-0.dll is missing from your computer** " indicates that an error has occurred. The cause of this is due to the system missing Microsoft Visual C++ or missing DLL file as mentioned.



Fix api-ms-win-crt-runtime-l1-1-0.dll error on Windows

If you fall into the above situation, please refer to the following ways to **fix api-ms-win-crt-runtime-l1-1-0.dll error** on Windows:

Install the Microsoft Visual C++ Redistributable update

For updating Microsoft Visual C++ Redistributable, you should consider choosing the right operating system. You have two options: 32-bit or 64-bit. Then, click on the download link [here](#) and install the software on your computer to complete. With this simple and easy-to-do method, you can fix the **api-ms-win-crt-runtime-l1-1-0.dll** error on Windows.

Fix api-ms-win-crt-runtime-l1-1-0.dll error on Windows by reinstalling the DLL file

When installing a game or driver, you receive the message ' **api-ms-win-crt-runtime-l1-1-0.dll missing from your computer** '. This means that the DLL file is missing or damaged. Therefore, you can fix the **api-ms-win-crt-runtime-l1-1-0.dll** error on Windows by reinstalling the DLL file. To download and install it properly, you need to follow the instructions below. You access the link <https://www.dll-files.com/api-ms-win-crt-runtime-l1-1-0.dll.html> . When the download is complete, copy the DLL file to the correct folder for your computer's operating system.

To check if the error has been fixed, simply restart your computer and install the software. If the game applications and drivers run stably, the error has been successfully fixed.

Reinstall Visual C++ Redistributable Package

Alternatively, you can fix the **api-ms-win-crt-runtime-l1-1-0.dll** error on Windows by reinstalling the **Visual C++ Redistributable** package . Usually, the machine architecture will be designed in 64-bit form. At this point, you just need to do the following:

Step 1: Go to **Control Panel** and select **Programs and Features** .

Picture 2 of 5 Ways to Fix Api-Ms-Win-Crt-Runtime-L1-1-0.Dll Error

Step 2: Search for **Microsoft Visual C++ 2015 Redistributable** , then right-click and click **Change** .

Picture 3 of 5 Ways to Fix Api-Ms-Win-Crt-Runtime-L1-1-0.Dll Error

Step 3: Next, click ' **Repair** ' to process. Or you can **Uninstall** then **Install** and reinstall the **Microsoft Visual C++ Redistributable** software and you're done.

Picture 4 of 5 Ways to Fix Api-Ms-Win-Crt-Runtime-L1-1-0.Dll Error

These operations are very simple and easy to do quickly. So, you should fix the error yourself instead of taking it to the shop, which will be more expensive and time-consuming.

Updates to Universal C Runtime

You also have another option to fix the **api-ms-win-crt-runtime-l1-1-0-dll** error is to update **the Universal C Runtime** . The installation process can be done directly at Microsoft. Currently, updating this version depends largely on the releases of **Windows 10 Universal CRT** running on old Windows. Therefore, it is best to consider which Runtime software is available on your computer's operating system. After the update is complete,

you just need to restart your computer and download the game software.

Download the update for **Universal C Runtime** from Microsoft: <https://support.microsoft.com/en-us/topic/update-for-universal-c-runtime-in-windows-c0514201-7fe6-95a3-b0a5-287930f3560c>

Update to Microsoft Visual C++ Redistributable for Visual Studio 2017

Similar to updating the **Visual C++ 2015 Redistributable** package, the **Microsoft Visual C++ Redistributable** package for Visual Studio 2017 is required for some other programs. So to fix the **api-ms-win-crt-runtime-l1-1-0.dll** error on Windows, you can update the Microsoft Visual C++ Redistributable for Visual Studio 2017. To download this package, you just need to access the link at <https://www.microsoft.com/en-US/download/details.aspx?id=52685>

Microsoft Visual C++ 2015 Redistributable Update 3 RC

Important! Selecting a language below will dynamically change the complete page content to that language.

Select Language:

Most of the ways to fix **api-ms-win-crt-runtime-l1-1-0.dll** errors above are completely free. So, consider what kind of problem your computer is having. From there, you can find the corresponding solution quickly and easily.

You finished reading the article "**5 Ways to Fix Api-Ms-Win-Crt-Runtime-L1-1-0.Dll Error**" edited by the [TipsMake](#) team. We hope this article has provided you with many useful tech tips and tricks. You can search for similar articles on tips and guides. Thank you for reading and for following us regularly.