

# 5 steps to fix 100% Full Disk error on Windows

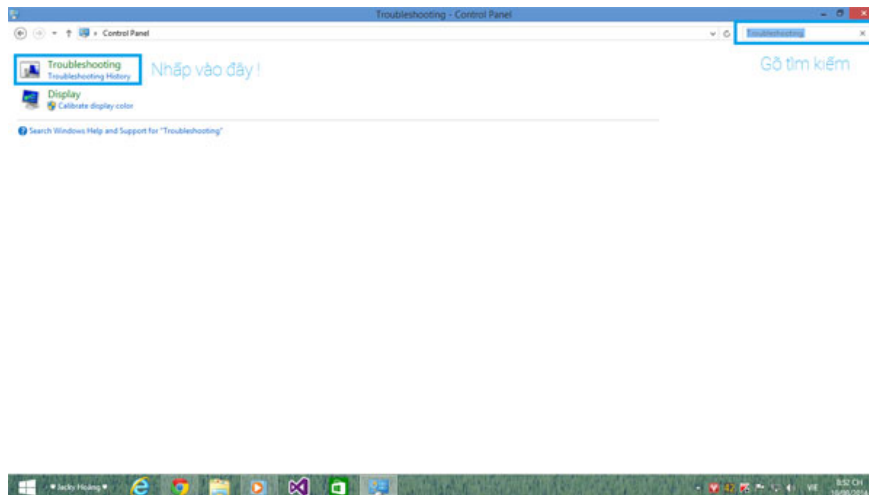
Your computer hangs, lags, doesn't do anything even after reinstalling Windows, and when checking Task Manager, it's Full 100% Disk. The following article will help you thoroughly solve this situation optimally and most effectively, help you troubleshoot the problem of full computer hard drive.

Your computer hangs, lags, doesn't do anything even after reinstalling Windows, and when checking Task Manager, it's Full 100% Disk. The following article will help you thoroughly solve this situation optimally and most effectively, help you troubleshoot the problem of full computer hard drive.

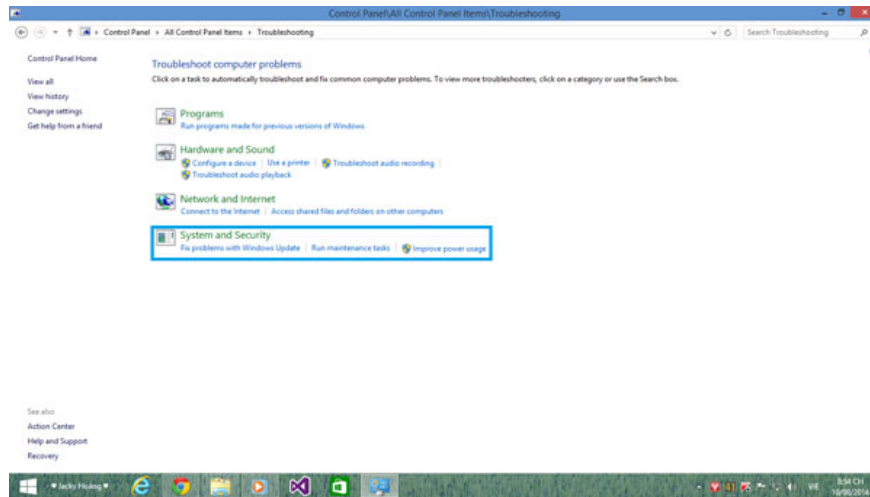
**See the 100% Full Disk error correction tips on Windows 8 / 8.1**

## 1. Handle the Troubleshooting section:

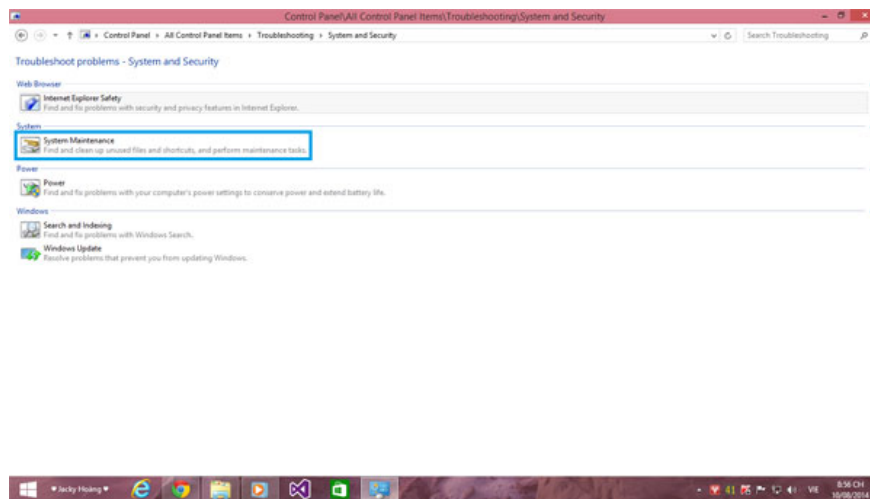
You go to **Control Panel** , type **Troubleshooting** in the search box and click on **Items Troubleshooting** .



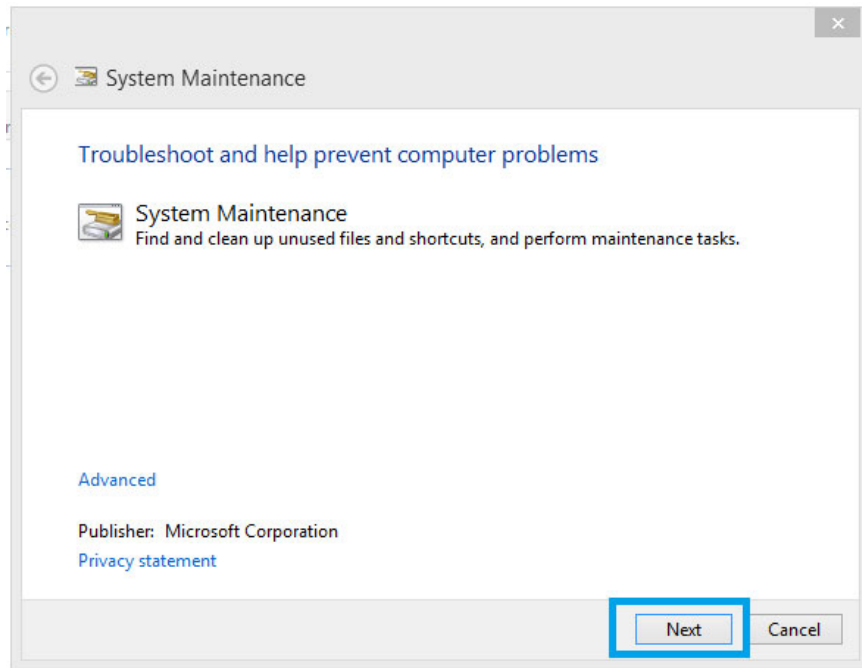
The window appears, click **System and Security** .



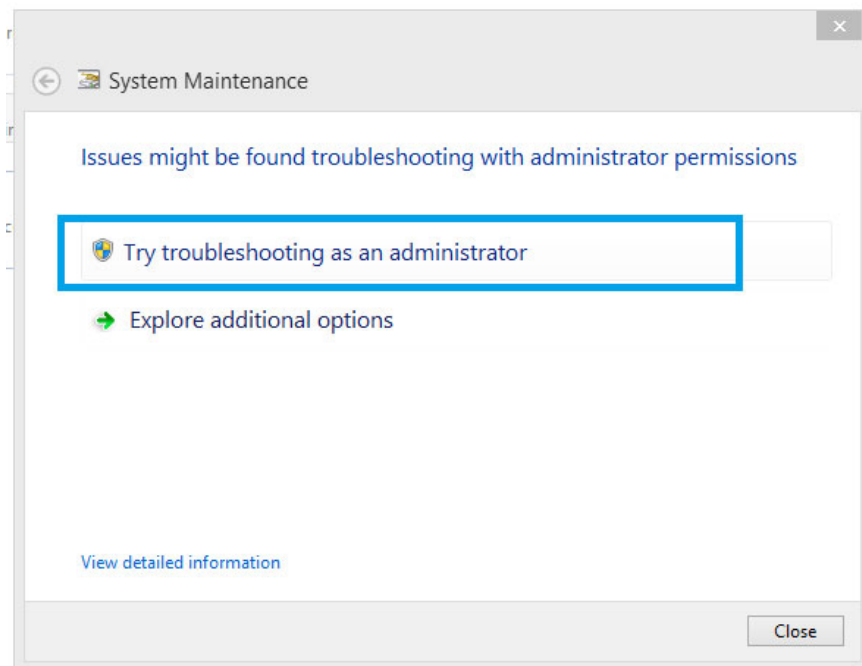
New window will appear, select **System Maintenance** .



The message appears, click **Next** .



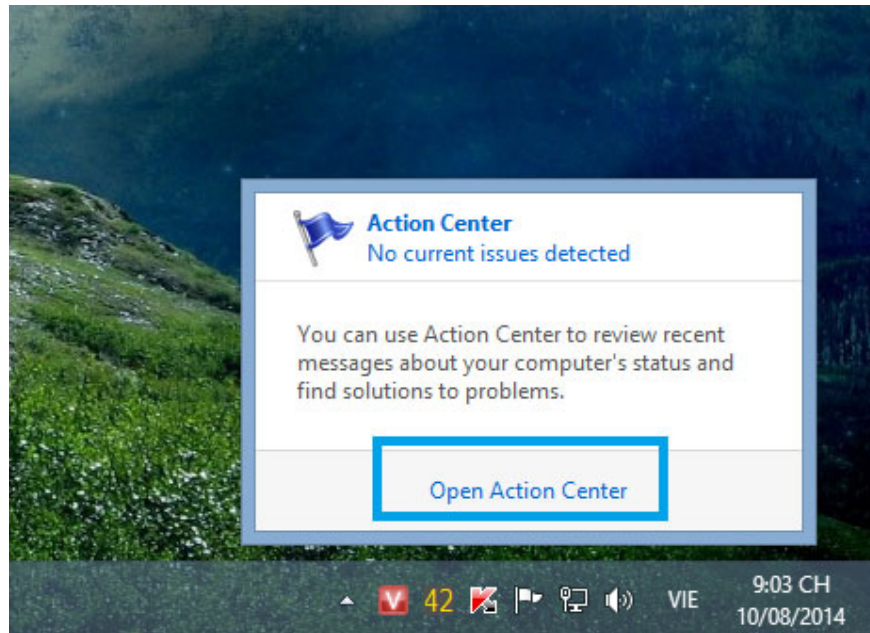
Then let it work when the **System Maintenance** message appears , click on the item **Try troubleshooting as an administrator** .



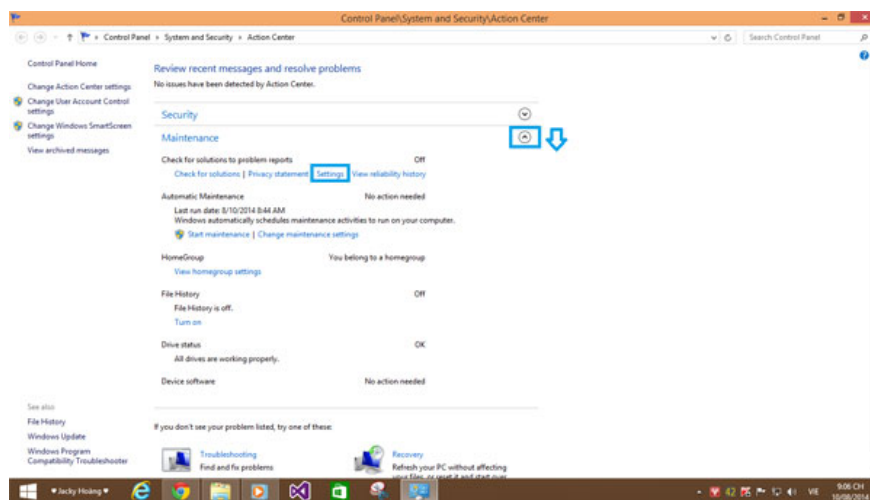
And wait for it to run until the word **Close** is clicked.

## 2. Turn off Maintenance:

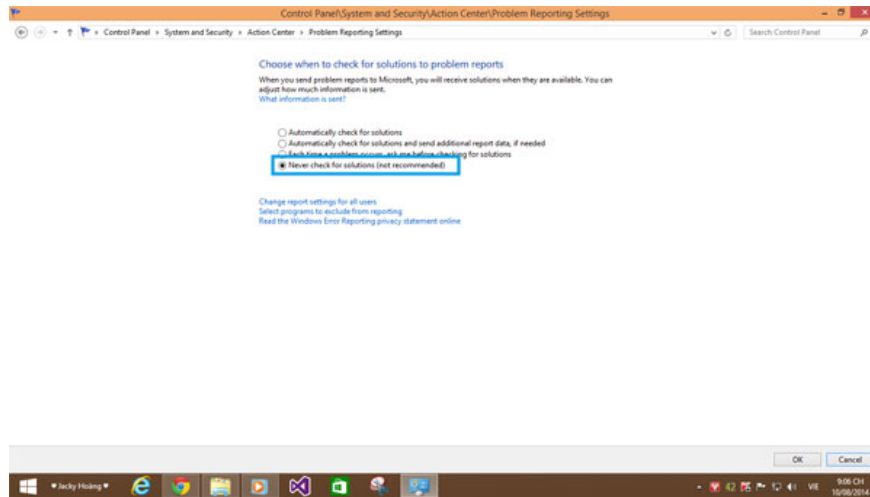
Open **Action Center** by left clicking on the flag under **Taskbar** in the lower right corner, select **Open Action Center** .



Next, click on the arrow for direction as shown to show more details of the **Maintenance** setup, select **Setting** .



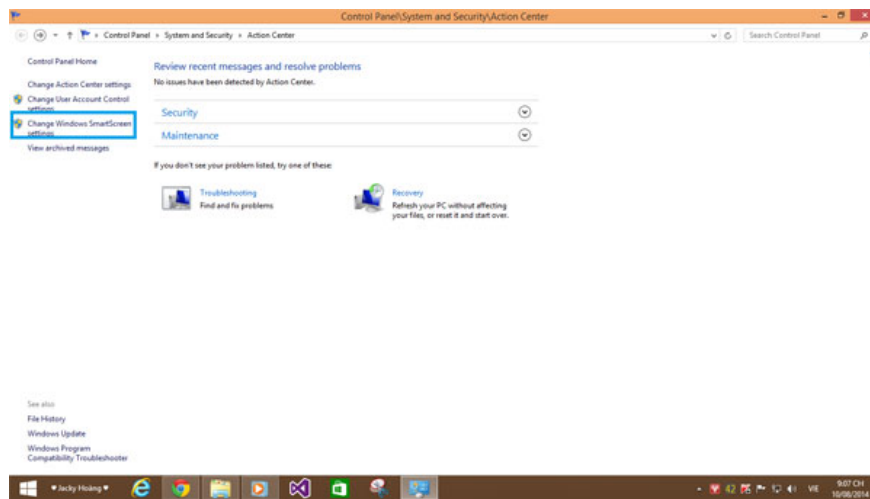
Then, click **Never check for solutions (not recommended)**



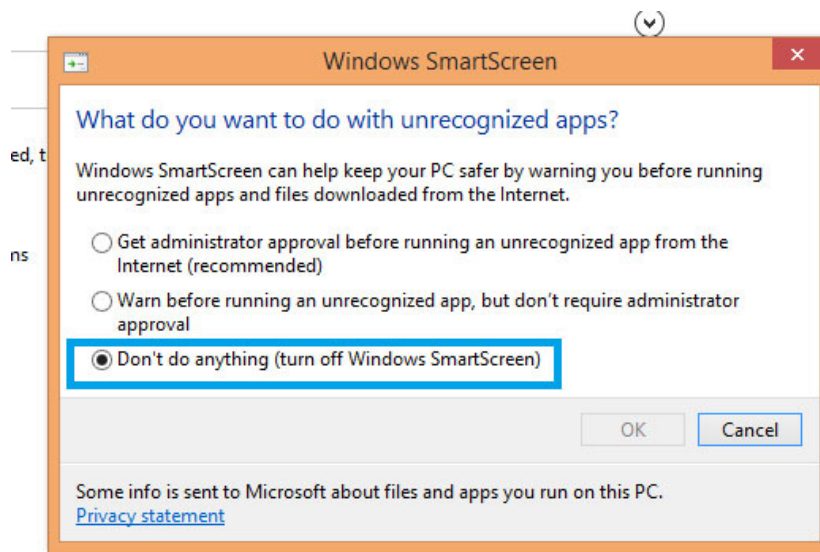
Select **OK** .

### 3. Turn off Windows SmartScreen:

As well as turn off **Maintenance** , go to **Action Center** , then look at the left column under **Change Windows SmartScreen Settings** , click on this item.

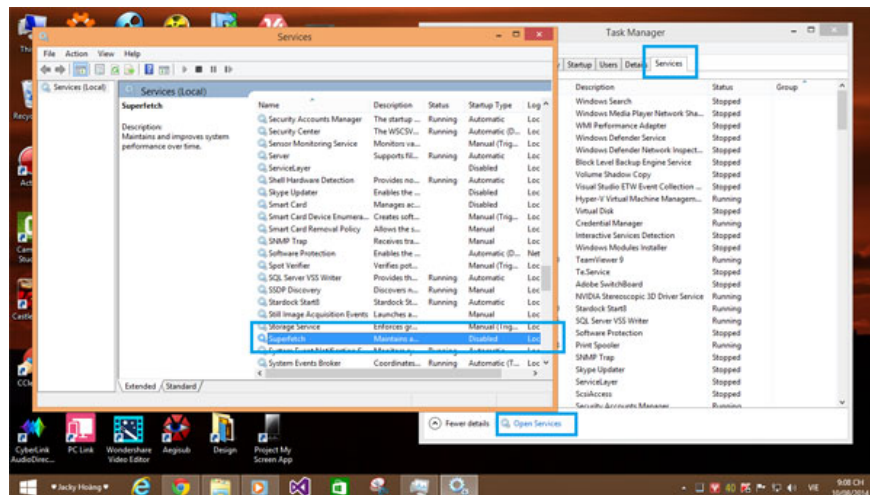


Then choose **Don't do anything (turn off Windows SmartScreen)**

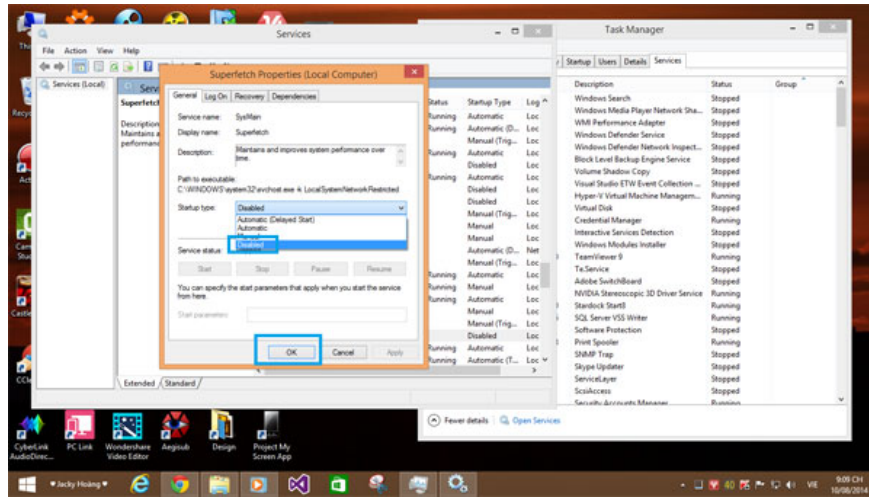


## 4. Turn off Service Super fetch:

Open **Task Manager** (or use shortcut key combination **Ctrl + Shift + Esc** ). Switch to the **Service** tab, select **Open Service** . The **Services** window appears, find the **Super fetch** service (press S and then search for convenience).

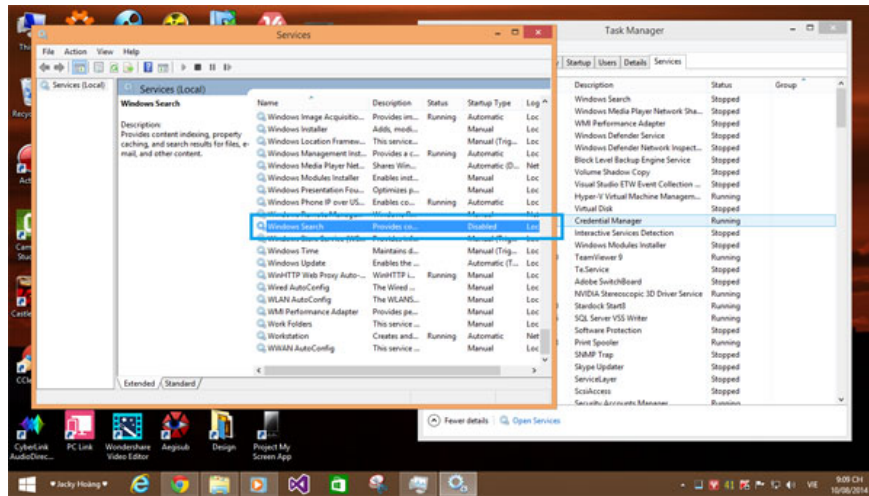


Double click on **Super fetch** service, select **Disable** then **OK** -> **Apply** .

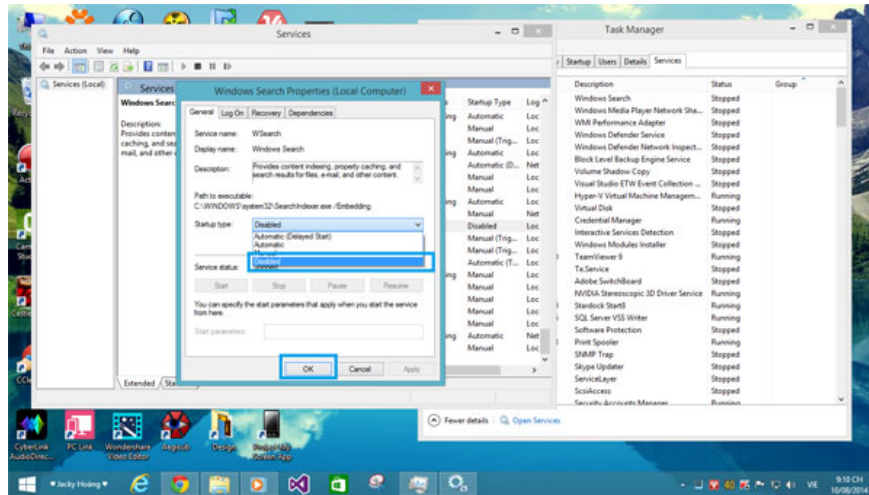


## 5. Turn off the Windows Search Service:

Still in Services , find Window Search (press W then find).

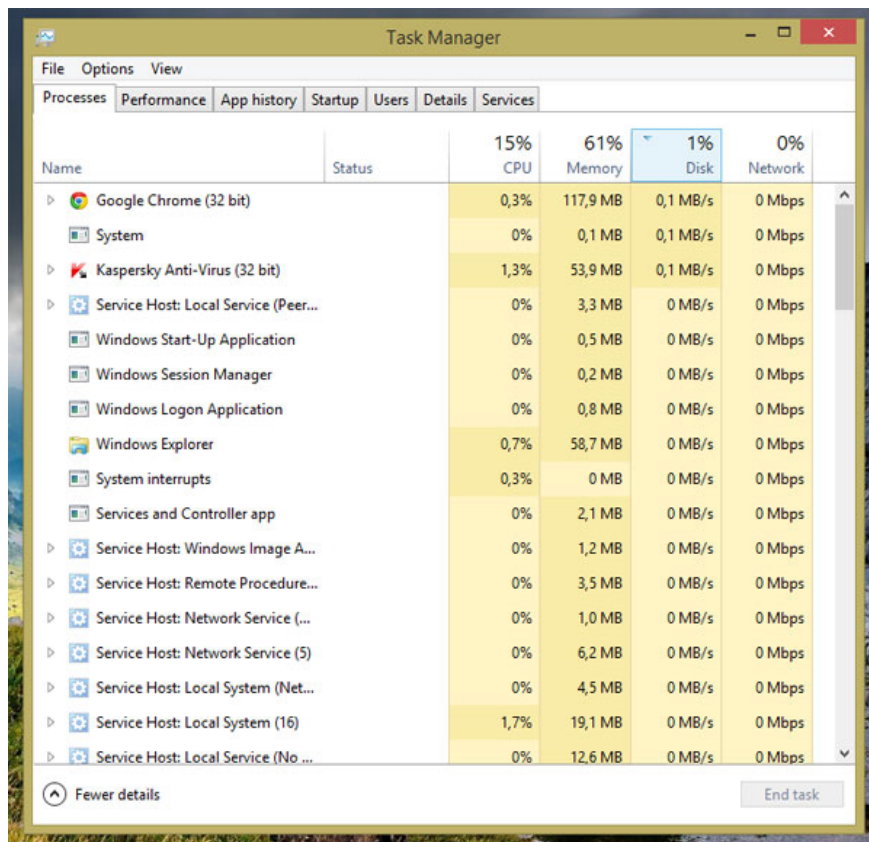


Then do the same as the Super fetch .



Press **OK** -> **Apply** to save the changes.

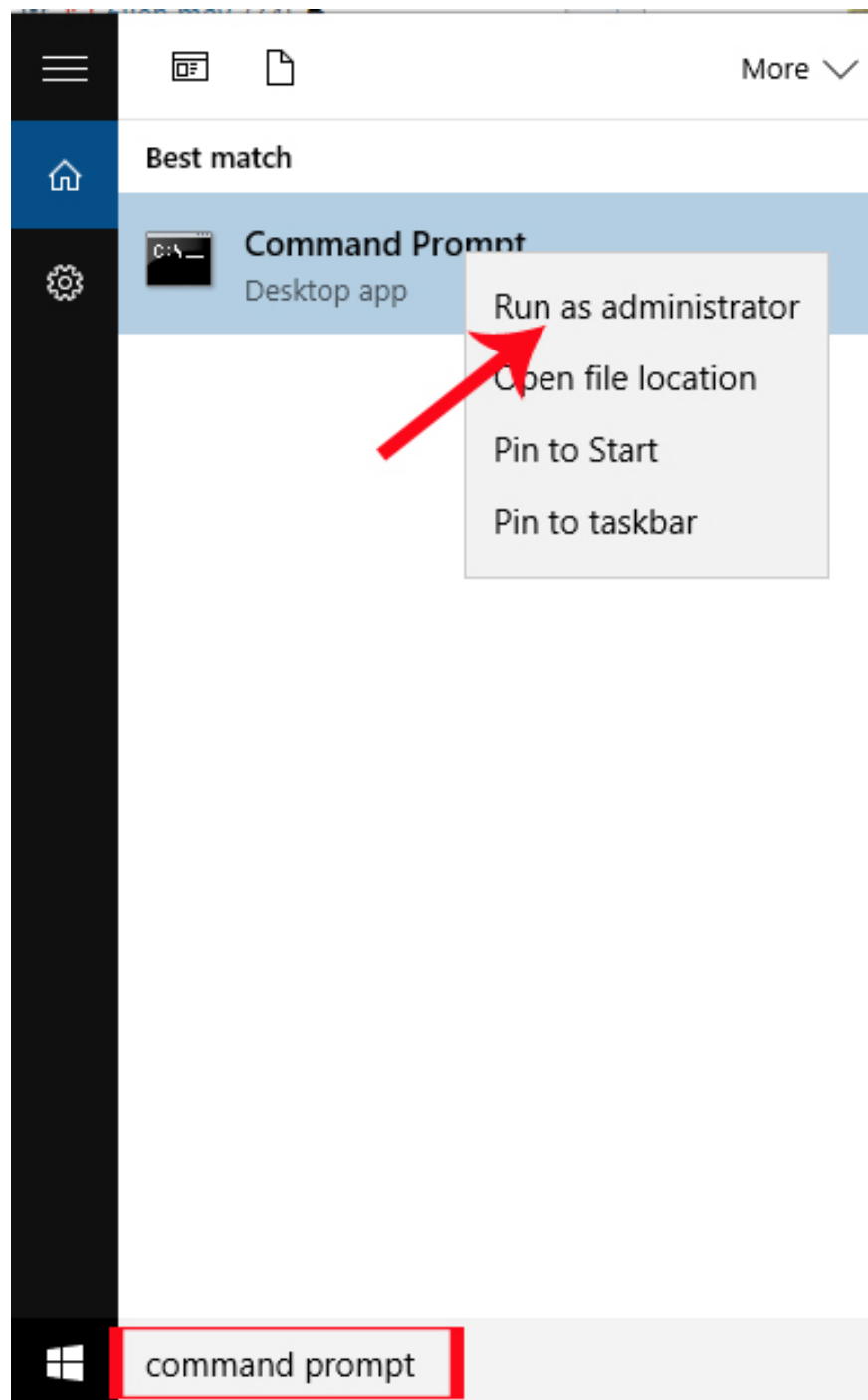
After doing 5 ways, restart your computer, turn on **Task Manager** and check if you still have Full 100% Disk.



**Note:** Some software or 100% Disk currently does the steps because the software may be viurs, then the software scans the system so 100% is not worrying, waiting for the scan is finished .

## 6. Full Disk error on the latest Windows 10 version (KB3201845):

First of all in the search bar on Windows, we type the keyword **command prompt** , then right click command prompt select **Run as admin** , type **WPR-cancel** . Finally press **Enter** to finish.



*Good luck!*

You finished reading the article "**5 steps to fix 100% Full Disk error on Windows**" edited by the [TipsMake](#) team. We hope this article has provided you with many useful tech tips and tricks. You can search for similar articles on tips and guides. Thank you for reading and for following us regularly.

