

5 solutions to fix 'DNS_Probe_Finished_Bad_Config' error in Chrome browser

DNS_Probe_Finished_Bad_Config error and DNS_Probe_Finished_Nxdomain error are DNS configuration errors. If this error occurs, DNS (Domain Name System) cannot access the website you requested.

The "DNS_Probe_Finished_Bad_Config" error and "DNS_Probe_Finished_Nxdomain" error are errors related to DNS configuration. If this error occurs, DNS (Domain Name System) cannot access the website you requested.

DNS has the role of translating domain names into IP addresses. In most cases, usually in Home Network or Public Network, IP and DNS address (settings) are automatically assigned when your device (computer, computer, or mobile device, .) Connected to the Router. In the network environment settings (IP & DNS address) are manually assigned by the Admin.

If DNS settings are wrong or corrupted, then your internet browser cannot access the Internet. The reason is because DNS cannot compile a domain name (domain) into an IP address (can't find the physical IP address of the website you want to access). And if you try to access the website again, on the screen you will get an error message, depending on the browser you use:

1. On Chrome browser: " *This webpage is not available. DNS_PROBE_FINISHED_BAD_CONFIG* " or " *DNS_PROBE_FINISHED_NXDOMAIN* ".
2. On Firefox browser: "The *server not found. Firefox can't find the server at www.example.com* ".
3. On Internet Explorer: " *This page can't be displayed* "

In the following article, Network Administrator will introduce you to **5 solutions to fix** " *dns_probe_finished_bad_config* " error and " *dns_probe_finished_nxdomain* " error on Chrome browser.



This webpage is not available

www.wintips.org

DNS_PROBE_FINISHED_BAD_CONFIG

Reload

[Details](#)

Fix "dns_probe_finished_bad_config" error and "dns_probe_finished_nxdomain" error:

1. Scan the computer for viruses

Viruses or malicious programs can cause Network & Internet connection errors. So before you proceed to the next solution to fix connection errors, try **using antivirus programs** to scan and remove viruses and other malicious programs on your computer.

Readers can refer to some of the most effective antivirus software for Windows computers here.

2. Restart the Router

1. **Unplug the power cord** from the Router and leave for about 30 seconds.
2. **Plug in the Router power cord** again and **restart** your computer.
3. Try reopening the page you want to access to see the error.

3. Reset TCP / IP Protocol

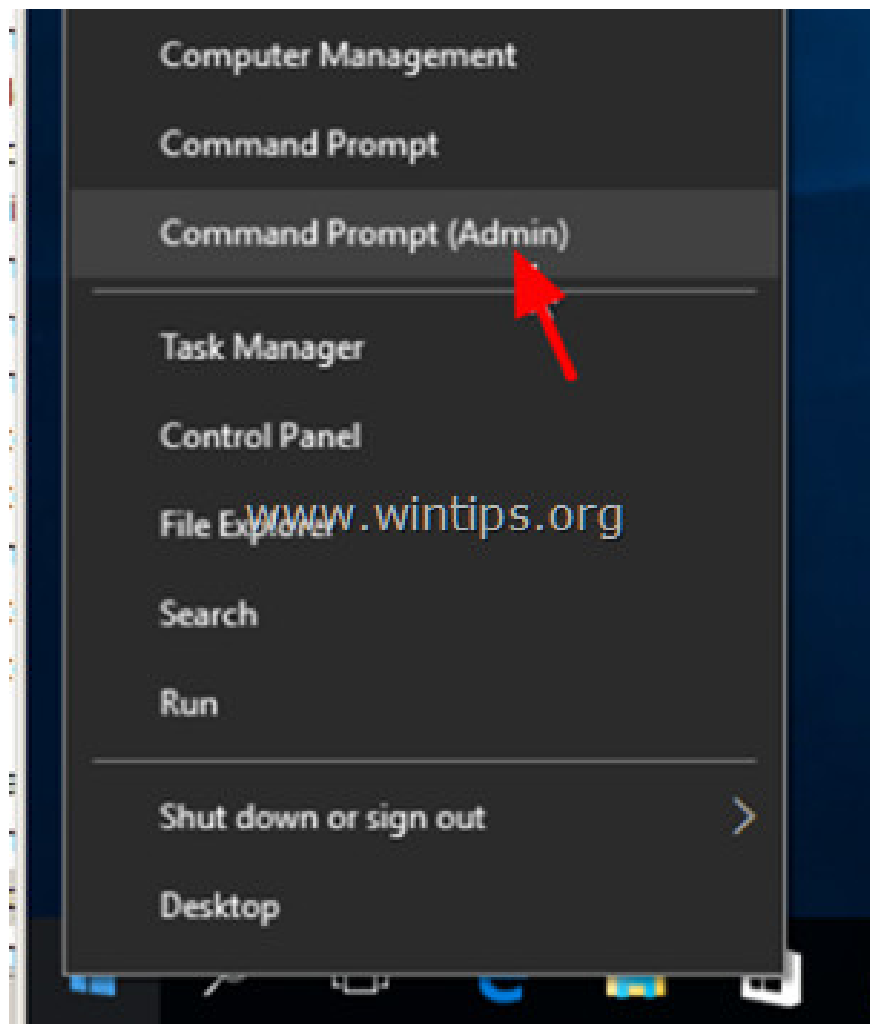
To reset TCP / IP Protocol, follow the steps below:

1. First open the Command Prompt under Admin:

- On Windows 7 and Windows Vista:

Go to Start => All Programs => Accessories .

Right- click **Command Prompt** and select **Run as administrator** .

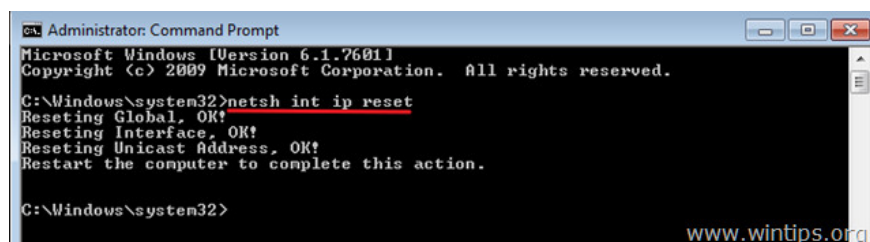


- On Windows 10, 8 and Windows 8.1:

Right-click the Start button in the left corner of the Taskbar to open Power User Menu, here you select **Command Prompt (Admin)**.

2. On the Command Prompt window, enter the following command and press **Enter** :

netsh int ip reset



3. Finally close the Command Prompt window and **restart** your computer and check if the error is still present.

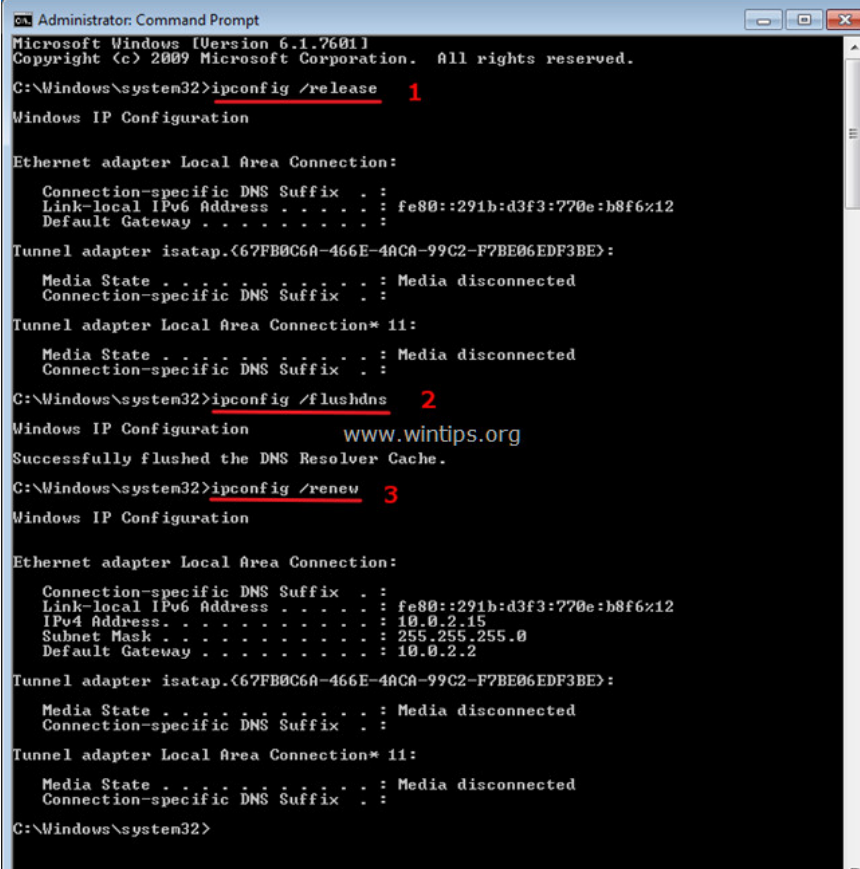
4. Refresh IP address and reset DNS address settings

1. First open the Command Prompt under Admin (follow the instructions above).
2. On the Command Prompt window, enter each of the statements below, after each statement press **Enter** :

ipconfig / release

ipconfig / flushdns

ipconfig / renew



```
Administrator: Command Prompt
Microsoft Windows [Version 6.1.7601]
Copyright (c) 2009 Microsoft Corporation. All rights reserved.

C:\Windows\system32>ipconfig /release 1
Windows IP Configuration

Ethernet adapter Local Area Connection:

    Connection-specific DNS Suffix  . : 
    Link-local IPv6 Address . . . . . : fe80::291b:d3f3:770e:b8f6%12
    Default Gateway . . . . . : 

Tunnel adapter isatap.{67FB0C6A-466E-4AC8-99C2-F7BE06EDF3BE}:

    Media State . . . . . : Media disconnected
    Connection-specific DNS Suffix  . : 

Tunnel adapter Local Area Connection* 11:

    Media State . . . . . : Media disconnected
    Connection-specific DNS Suffix  . : 

C:\Windows\system32>ipconfig /flushdns 2
Windows IP Configuration           www.wintips.org
Successfully flushed the DNS Resolver Cache.

C:\Windows\system32>ipconfig /renew 3
Windows IP Configuration

Ethernet adapter Local Area Connection:

    Connection-specific DNS Suffix  . : 
    Link-local IPv6 Address . . . . . : fe80::291b:d3f3:770e:b8f6%12
    IPv4 Address. . . . . : 10.0.2.15
    Subnet Mask . . . . . : 255.255.255.0
    Default Gateway . . . . . : 10.0.2.2

Tunnel adapter isatap.{67FB0C6A-466E-4AC8-99C2-F7BE06EDF3BE}:

    Media State . . . . . : Media disconnected
    Connection-specific DNS Suffix  . : 

Tunnel adapter Local Area Connection* 11:

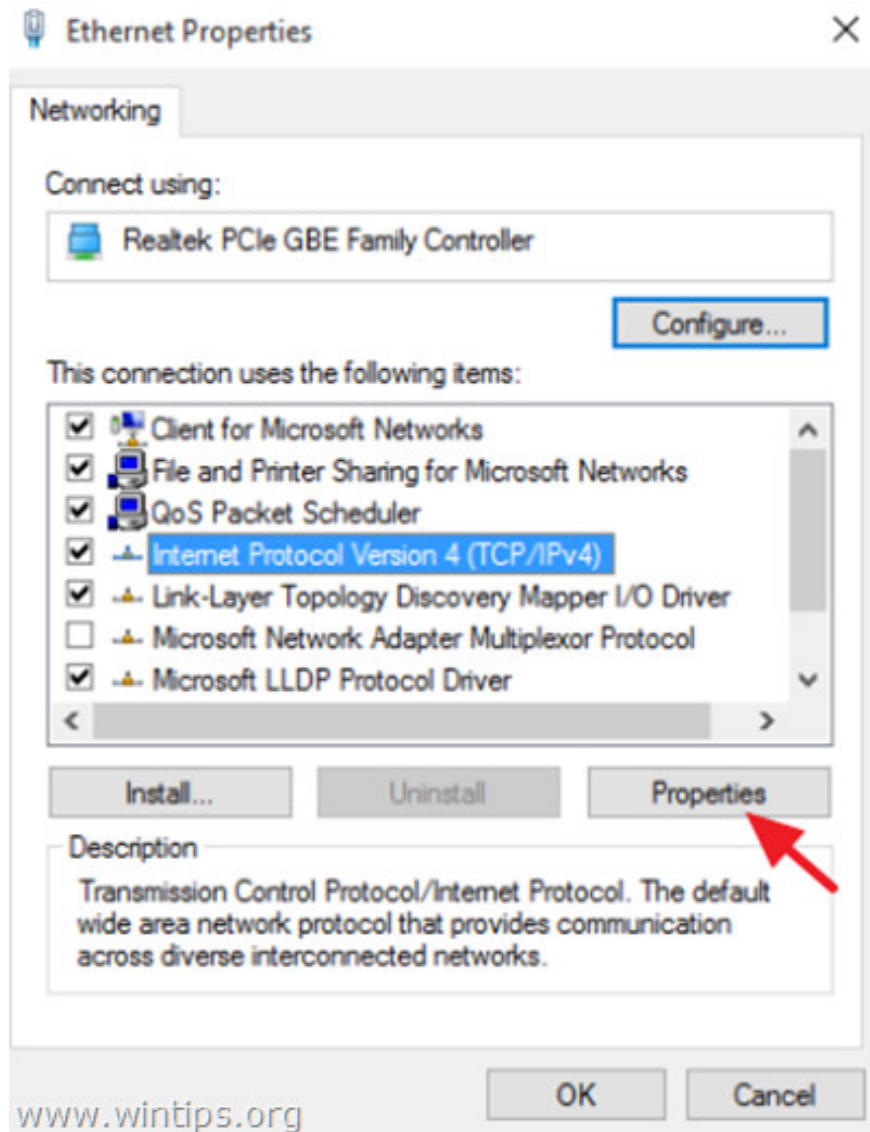
    Media State . . . . . : Media disconnected
    Connection-specific DNS Suffix  . : 

C:\Windows\system32>
```

3. Finally close the Command Prompt window and **restart** your computer and check if the error is still present.

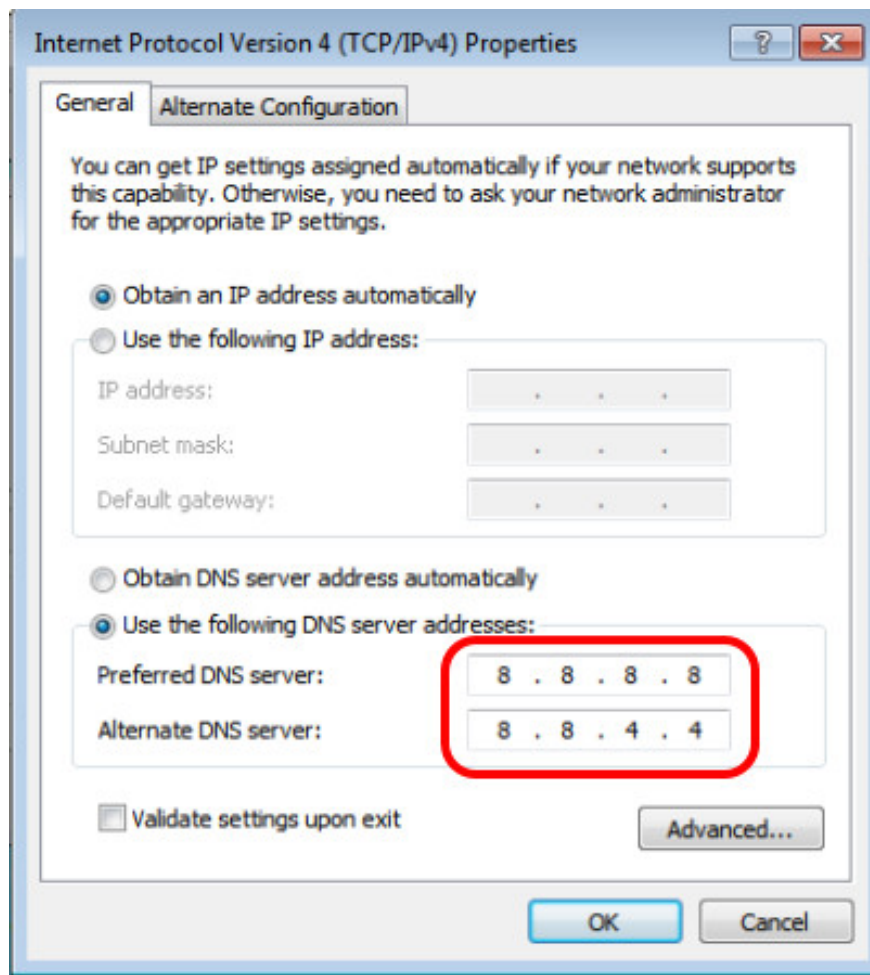
5. Change DNS settings

1. Access **Control Panel => Network and Sharing Center** .
2. In the Network and Sharing Center window, click **Adapter Settings** in the left pane.
3. Double-click the Network Connection you are connecting to (such as Local Area Connection).
4. Select **Internet Protocol Version 4 (TCP / IPv4)** and then click **Properties** .



5. Select **Use the following DNS server addresses** and enter the Google DNS Server address:

1. 8.8.8.8
2. 8.8.4.4



6. Click **OK** twice to close the Network Properties dialog window.

7. **Restart** your computer and try checking to see if the error is still there.

Refer to some of the following articles:

1. When the network speed is slow, turn this feature off to browse the Web on browsers faster
1. Fix Err-Connection-Refused and Err_Connection_Closed errors on Chrome browser
1. Instructions to remove Social Search toolbar in Chrome, Firefox and Internet Explorer browsers

Good luck!

You finished reading the article "**5 solutions to fix 'DNS_Probe_Finished_Bad_Config' error in Chrome browser**" edited by the [TipsMake](#) team. We hope this article has provided you with many useful tech tips and tricks. You can search for similar articles on tips and guides. Thank you for reading and for following us regularly.