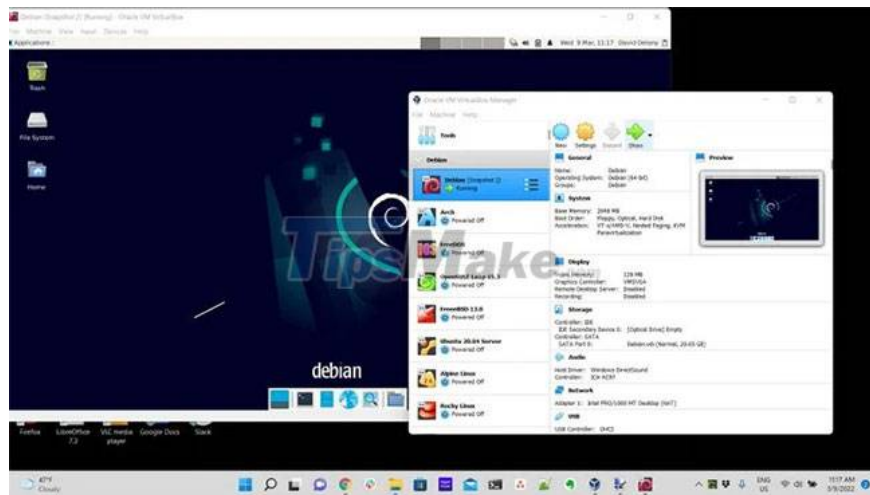


# 5 reasons to use Linux desktop instead of WSL

While WSL has made it easier for people who need to use both Windows and Linux on the same machine, there may still be reasons to use a real Linux desktop on your computer.

In this article, TipsMake will discuss why to use Linux desktop instead of WSL.

## 1. It is still possible to use Windows and Linux on the same machine



With a full Linux desktop, you don't have to give up your Windows programs. Linux has supported various ways to run Windows alongside Linux since the beginning.

The classic option is dual boot, which uses the bootloader to choose between the two systems at boot time. You can also run a Windows or Linux desktop in a virtual machine, depending on which system you use less often. If you want to run Windows programs, but are still determined to use Linux, you can use Wine or Proton.

You have many options when you want to run Windows and Linux applications. You can keep Windows for the games and other programs you need, while using Linux to learn more about computers, programming, system administration, or the operating system in general. It's a great division of labor.

## 2. Use Linux that supports free and open source software

The biggest reason to use Linux on the desktop is its support for free and open source software. Even if Microsoft is supporting Linux and contributing to open source software, Windows itself is still proprietary.



The development of Linux desktop has encountered a problem. There isn't much support from hardware developers, so the average user doesn't use the Linux desktop, which in turn means fewer developers support it. This makes sites like the Linux Hardware Database important for many Linux users to check for compatibility before installing.

With growing interest in Linux gaming, this could change. If there is more support for gaming hardware, especially graphics cards, this could make the Linux desktop a formidable competitor to Windows, which has long dominated PC gaming.

While WSL is a good product, there are situations where it would be better to run a full Linux distribution on the desktop.

You finished reading the article "**5 reasons to use Linux desktop instead of WSL**" edited by the [TipsMake](#) team. We hope this article has provided you with many useful tech tips and tricks. You can search for similar articles on tips and guides. Thank you for reading and for following us regularly.