

5 distributions based on the best Arch Linux

Arch Linux is one of the most popular Linux distributions. But using Arch Linux is also a difficult challenge, making experienced Linux users flinch.

Arch Linux is one of the most popular Linux distributions. But using Arch Linux is also a difficult challenge, making experienced Linux users flinch. If you're looking to build your operating system from scratch, Arch Linux is a powerful option.

If you want to harness the power of Arch Linux but don't want to build everything from scratch, the good news is there are many Arch-based Linux distributions. Installing these distributions based on GUI is quite simple and each option offers its own unique features.

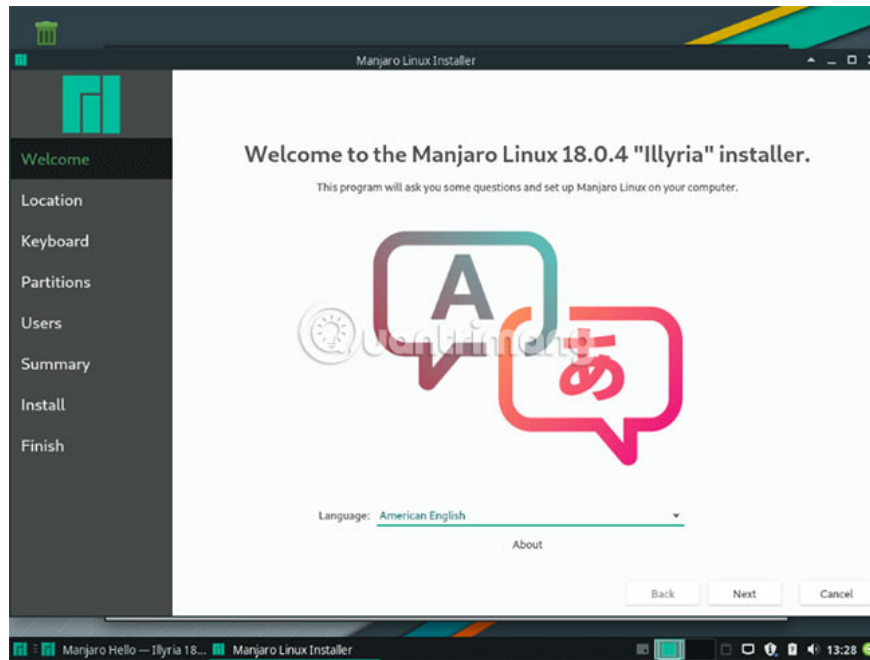
Here are 5 Arch-based Linux distributions that you can try.

Top 5 Arch Linux-based distros most suitable for beginners

1. Manjaro
2. Chakra
3. ArcoLinux
4. Velt / OS
5. ArchBang

1. Manjaro

Manjaro has all the benefits of Arch Linux but in a user-friendly package. There is a graphical installer. Simple enough to use, even for new Linux users.



Manjaro uses the same packages found in Arch Linux, but the package inspection process takes about two weeks longer than Arch. Packages are provided only if they have no compatibility or stability issues. Manjaro is not as good as Arch Linux, but you will find it more stable.

In addition, there is an option to select from a variety of desktop environments. There are 4 official options - Xfce, KDE, Architect and Gnome. The community has created more desktop environments, including MATE, Cinnamon and Deepin. Manjaro also comes with 32 bit version, which is no longer provided by Arch Linux - perfect for older computers.

2. Chakra

If KDE is the desktop environment you are using, then Chakra is another good Arch-based distribution worth considering. KDE's Chakra uses Plasma, using widgets to help create a highly configurable and efficient desktop environment. The installation is also simple, with the graphical installer as well as the hardware detection feature.

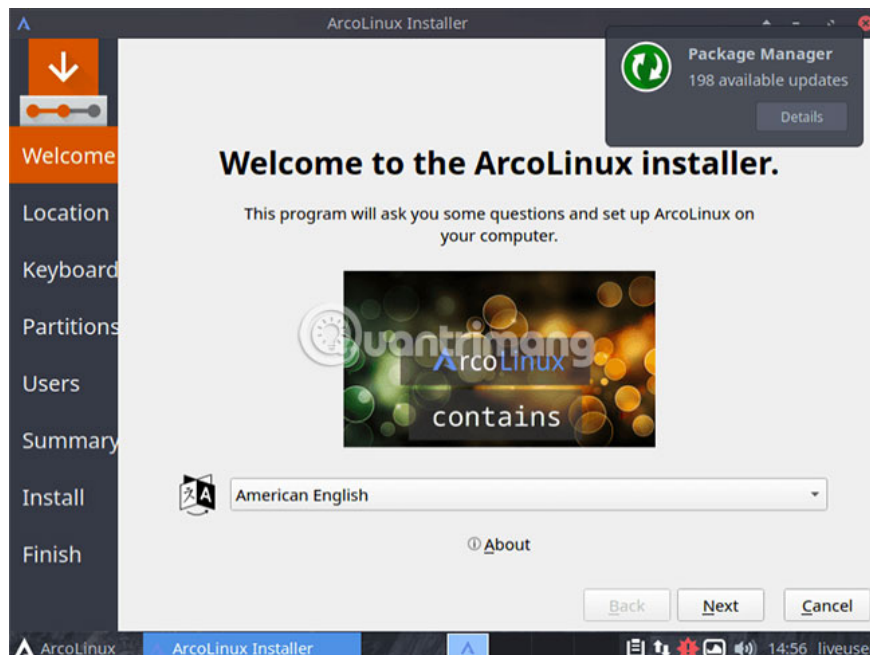


Chakra uses half-rolling release - applications that take advantage of rolling update updates, while the core is updated more slowly, periodically. This means you can own the latest versions of your favorite apps, but the core Arch operating system remains stable.

Chakra comes with KDE, so if you like another desktop environment, you'll need to find another option.

3. ArcoLinux

ArcoLinux is made up of 3 large projects, each targeting different user groups. The first variant, named ArcoLinux, comes with a lot of software and options for Xfce, Openbox and i3 desktops.



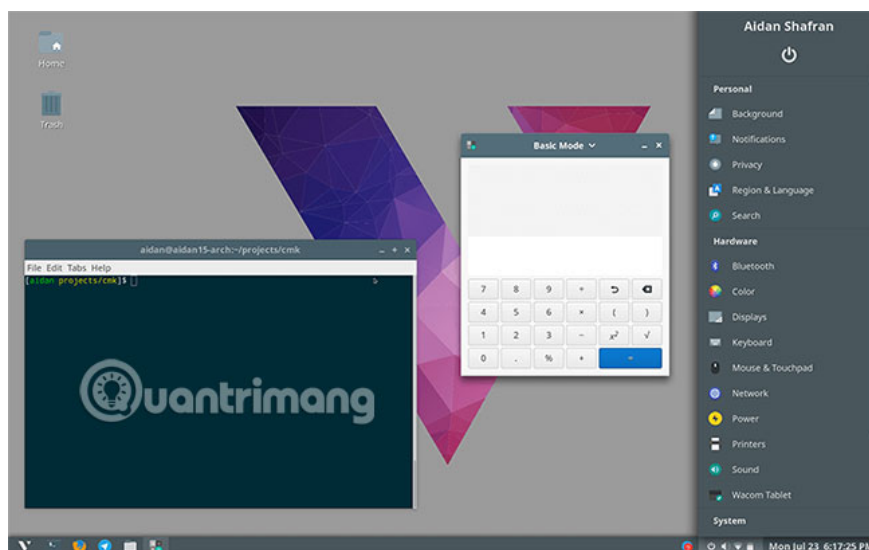
ArcoLinuxD requires you to install the desktop environment from the terminal, along with any applications you need. For new users, the lack of a graphical installer may not be suitable.

ArcoLinuxB allows you to build your own custom distribution. Another option is to take advantage of the community-built and configured distributions available with desktops like Gnome, Cinnamon, MATE, Budge and Plasma.

Although ArcoLinuxD and ArcoLinuxB offer more challenges, video tutorials are available to assist you throughout the process. If you can't find what you need, you can contact ArcoLinux via social networks and they will create a new tutorial video for you.

4. Velt / OS

The Velt / OS starts with the intention of becoming a user-designed operating system - the community will vote on proposed features and shape the development of the distribution. This idea turned out to make development extremely slow, so in the end, it was eliminated.



Instead, developers focused on creating a desktop environment developed for easy installation, using Arch Linux as a basis. The desktop environment is based on Google's Material Design approach - so Google users will find this familiar.

Velt / OS comes with an easy-to-use graphical installation tool - just download the Arch-based ISO or you can switch to Velt / OS from the existing Arch installation if you wish.

5. ArchBang

ArchBang is another lightweight distribution based on Arch Linux, designed to be as simple as possible for users. The distribution itself is fast, stable and uses a highly configurable Openbox window manager to provide you with a neat environment (if the GUI is what you want).



The initial installation comes with very few built-in applications, maintaining Arch's features of choosing what you need. There is a text editor, file manager, music player and Firefox for web browsing.

You can install any additional applications you need from the Arch User Repository database. If you are looking for a lightweight Arch distribution to run on old PCs or have low resources, ArchBang is a great option.

Any of these distributions will allow you to harness the power of Arch Linux without having to build everything from scratch. After that, you can spend more time learning how to install Arch from scratch.

Hope you are successful.

You finished reading the article "**5 distributions based on the best Arch Linux**" edited by the [TipsMake](#) team. We hope this article has provided you with many useful tech tips and tricks. You can search for similar articles on tips and guides. Thank you for reading and for following us regularly.