

# 49 smart Photoshop tips you need to know (Part 2)

Continue with simple but extremely effective Photoshop tips to create impressive products.

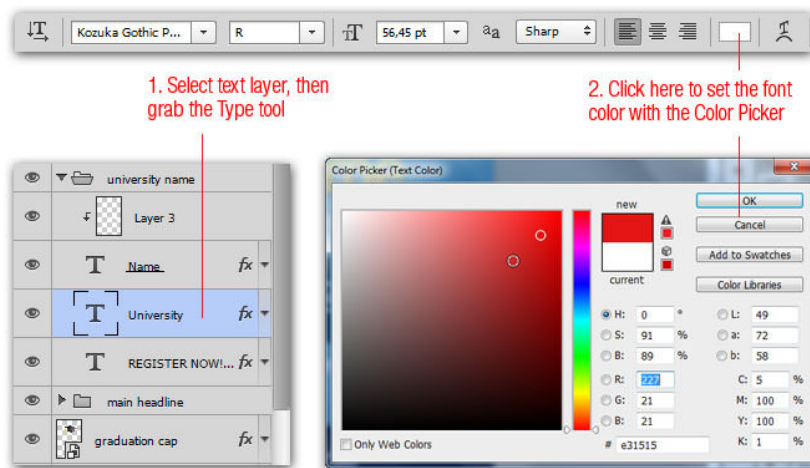
In the previous article, **TipsMake.com** introduced you to the first 15 tips in a collection of **49 clever Photoshop tips** to simplify the process of work and today, let's explore with us. More interesting tricks.

*Note : In this article, the main document is a blank page that can be opened by holding down Ctrl + N and the main file is the data that is included in Photoshop for processing.*

## 15. How to change text colors without highlighting

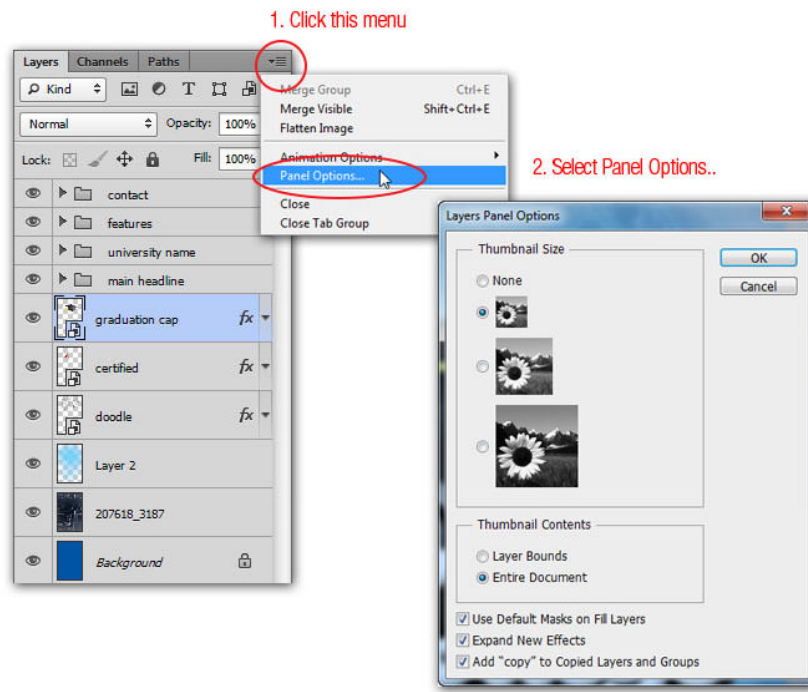
Beginners using Photoshop often change the text color by highlighting (highlighting / selecting) the text and then selecting a new color by double-clicking the foreground color (Foreground). However, you will not be able to track the color change of the text when it is selected.

A simpler way is to select the layer, then select the **Type Tool** and click on the color square in the options bar ( **Options Bar** ). This way, you can both change the color of the text and see the changes without highlighting.



## 16. How to access a hidden option

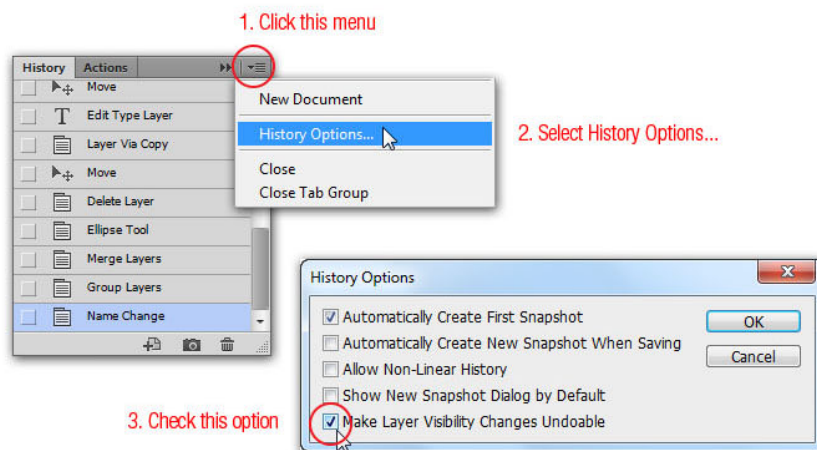
Did you know that in the upper right corner of every panel on Photoshop there is a hidden little icon containing a flyout menu with "secret" options. You can open them by clicking on this menu, selecting **Panel Options** and starting to use the features in it.



## 17. How to keep the eye icon unchanged

Occasionally, you make a mistake and try to fix it by checking the eye icon on each layer. When you've made a lot of changes, if you want to restore the previous action, you often think of pressing **Ctrl + Z**. The problem here is that the eye icon has disappeared.

To avoid this, tick the **Make Layer Visibility Changes Undoable** option from the **History Options** dialog box. Once activated, you can use the **Cmd / Ctrl + Alt + Z** command to review the history as needed and you will see the eye changes of the layer now saved as well.

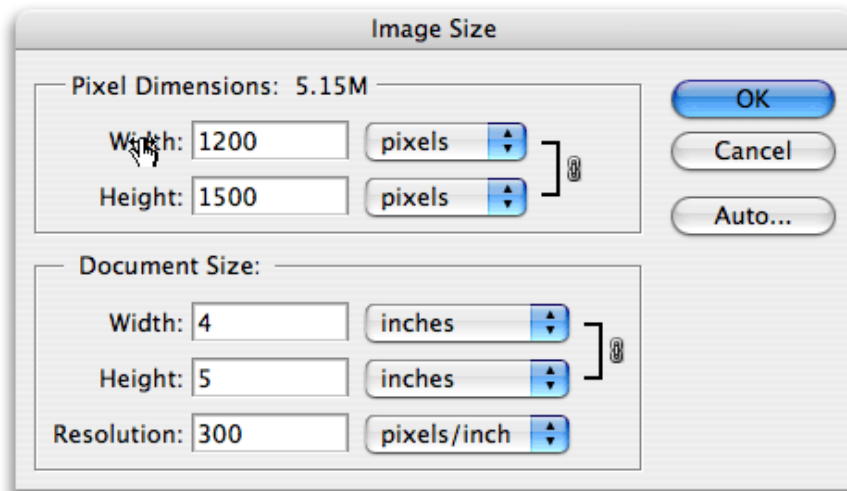
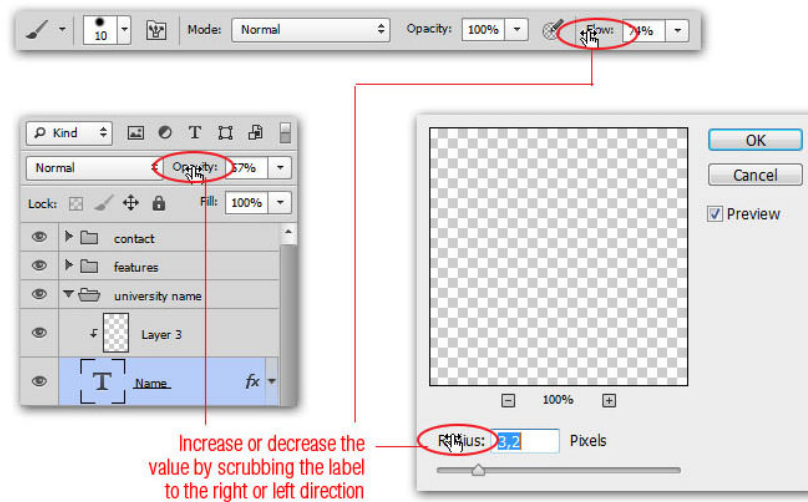


## 18. Quickly hide palettes, toolboxes and options bar

We can hide the palette, toolbox and options bar in Photoshop by pressing the **Tab** key or selecting **Shift + Tab** if you only want to hide the palette. This trick is especially useful when you want to focus on observing images on Artboard. If you want to display them again, press the Tab key again.

## 19. How to change the value by dragging the mouse

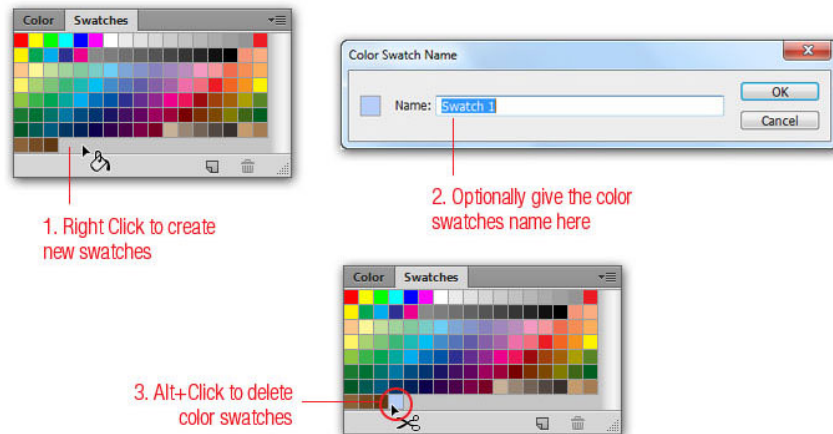
From **Photoshop CS4**, users can drag to change the input value. For example, if you want to change the opacity of a layer instead of having to enter a value in the "Opacity" box on the Layers panel, just hover your mouse over the value on this cell, then drag the mouse. Left to reduce opacity and drag the mouse to the right to increase the value. This is one of Photoshop's most time-saving features.



## 20. Ways to add new colors to the Swatch Palette quickly

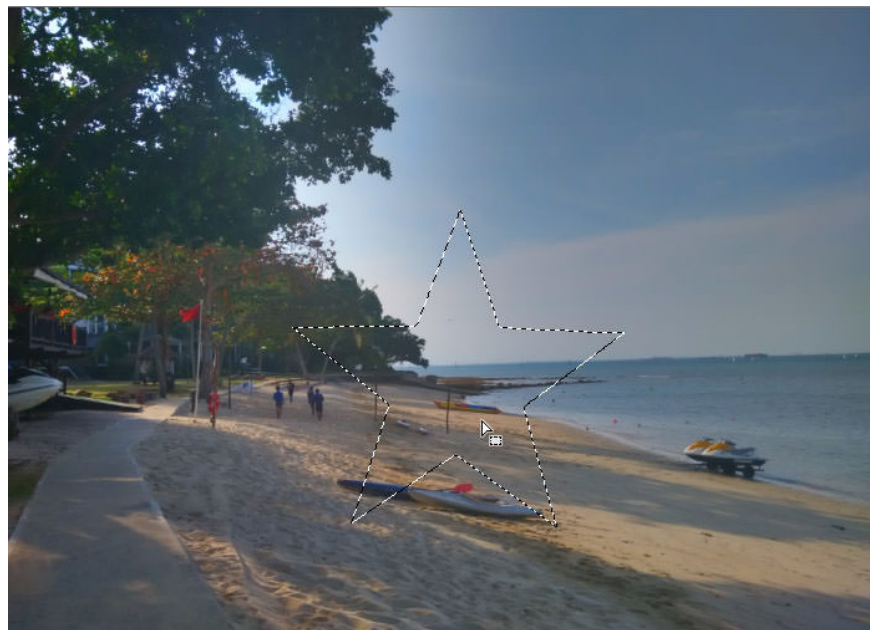
Photoshop allows users to add new colors to the **Swatch Palette**, but instead of selecting a color and clicking the **Add to swatches** button, there is another simpler way. From the Swatches Palette, right-click to add new colors quickly. In case you add the wrong color, delete it by holding down the **Alt** key and dragging the mouse to the

color you want to delete. At this point, the mouse pointer will turn into a scissors and you just need to click the mouse and delete that color immediately.



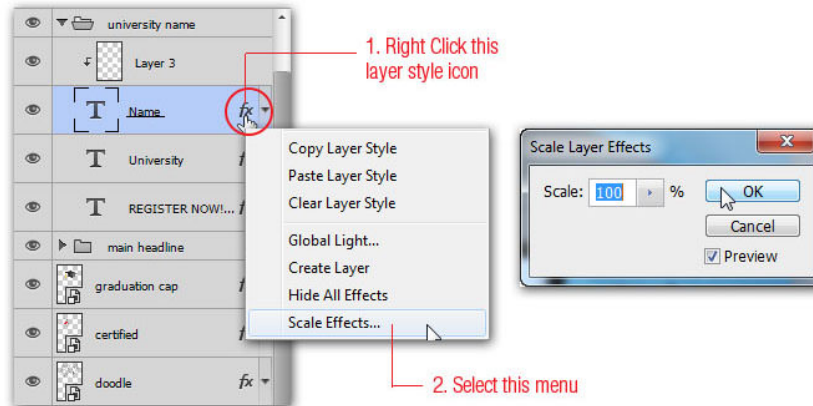
## 21. How to move and Transform the selection

After you have selected a region using the **Marquee** or **Lasso** tool, if you want to move the selection, simply hold down the spacebar and use the selection tool to move the selection (alter the image). In addition, you can also edit a selection by going to Select => Select Transform Selection (this way does not change the image).



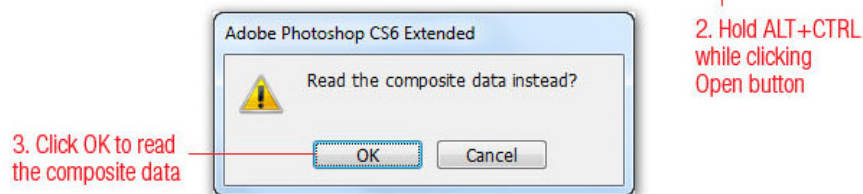
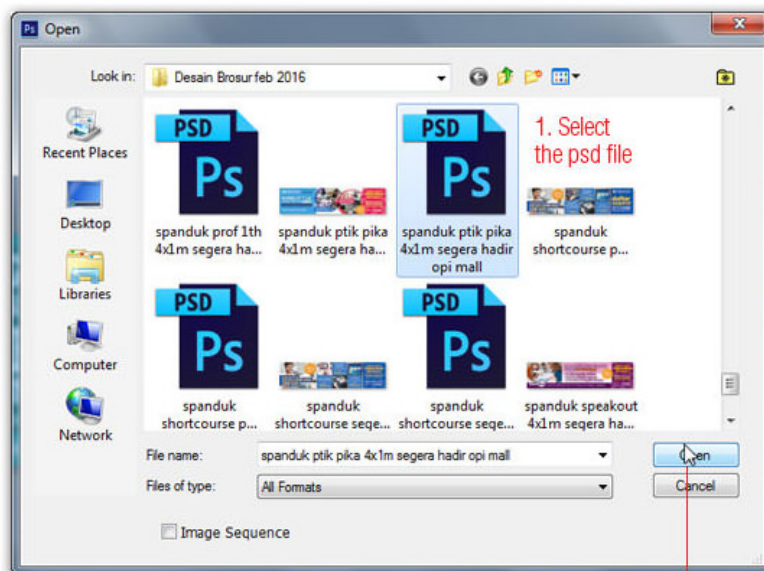
## 22. How to enlarge Layer Style / effects

If you want to add a Layer Style to an object, you can easily increase the "Area" Layer Style applied by right-clicking on the **fx** icon, selecting **Scale Effect** and adjusting the parameters on the next dialog box. open.



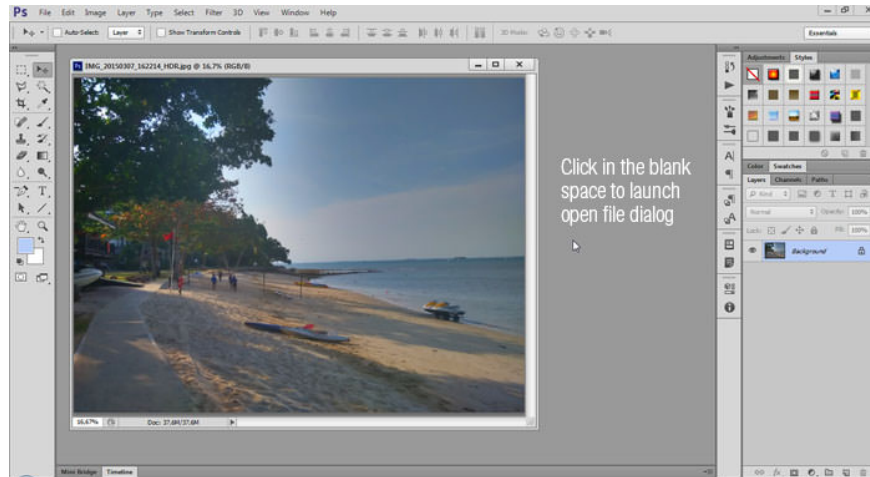
## 23. How to open a file containing multiple layers as a Flatten Image

If the file contains multiple layers, it will take a long time to load all those layers. A faster way is to open "Flatten" (the file becomes a "flat" image with absolutely no layers because all layers have been merged into the background image) by going to **File => Open**, searching for the desired file. Open, press and hold **Shift + Alt** key combination before clicking the **Open** button. When the next dialog box appears, select **Yes**.



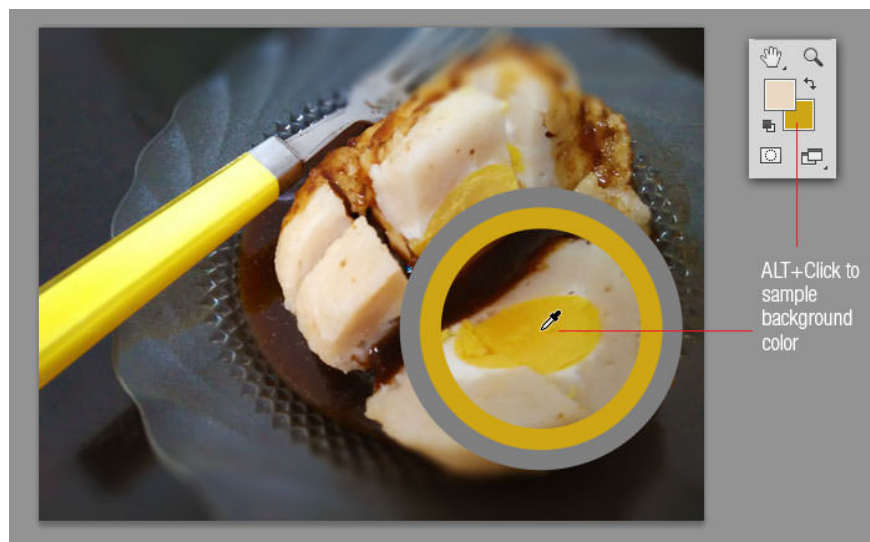
## 24. How to open files quickly

There are two common ways to open a file in Photoshop: **File** => **Open** and use **Ctrl + O**. Alternatively, you can also double-click an empty area outside the working image (the outer part of the canvas) to open the **Open** dialog box faster.



## 25. How to apply background colors quickly

A quick way to change the foreground color is to click on **Sample Color** using the **Eyedropper** tool . If you hold down the **Alt** key while clicking **Sample Color** , the background color will also change.



## 26. How to recover a selection

If you lose a selected selection, you can press **Ctrl + Shift + D** ( **Cmd + Shift + D** on the Mac) to retrieve that selection.



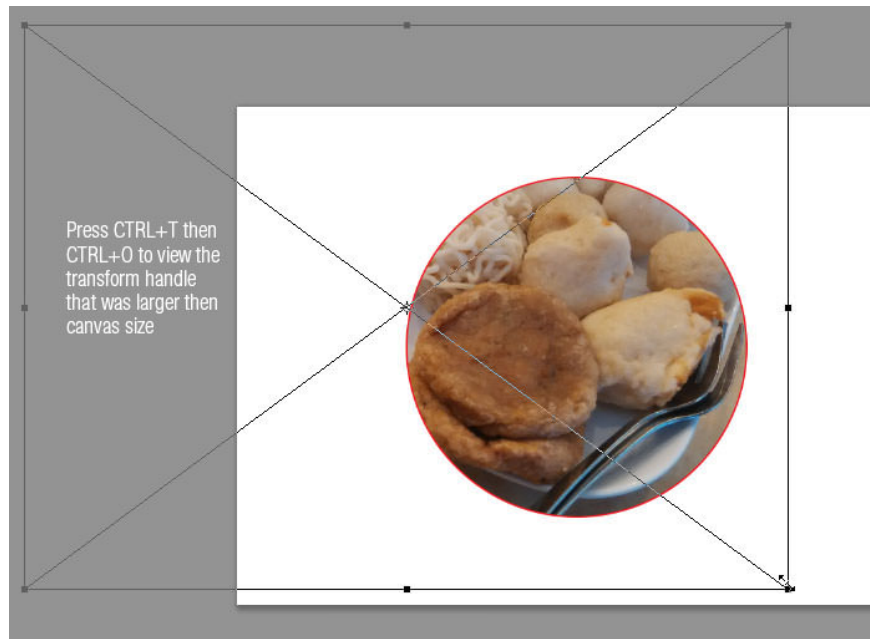
## 27. How to hide the selection but not disappear completely

If the blinking effect of the selection causes you to be scattered when working, hide it using the **Ctrl + H** key combination ( **Cmd + H** on the Mac). The selection will be hidden but will not disappear. If you want to recover, just press **Ctrl + H**.



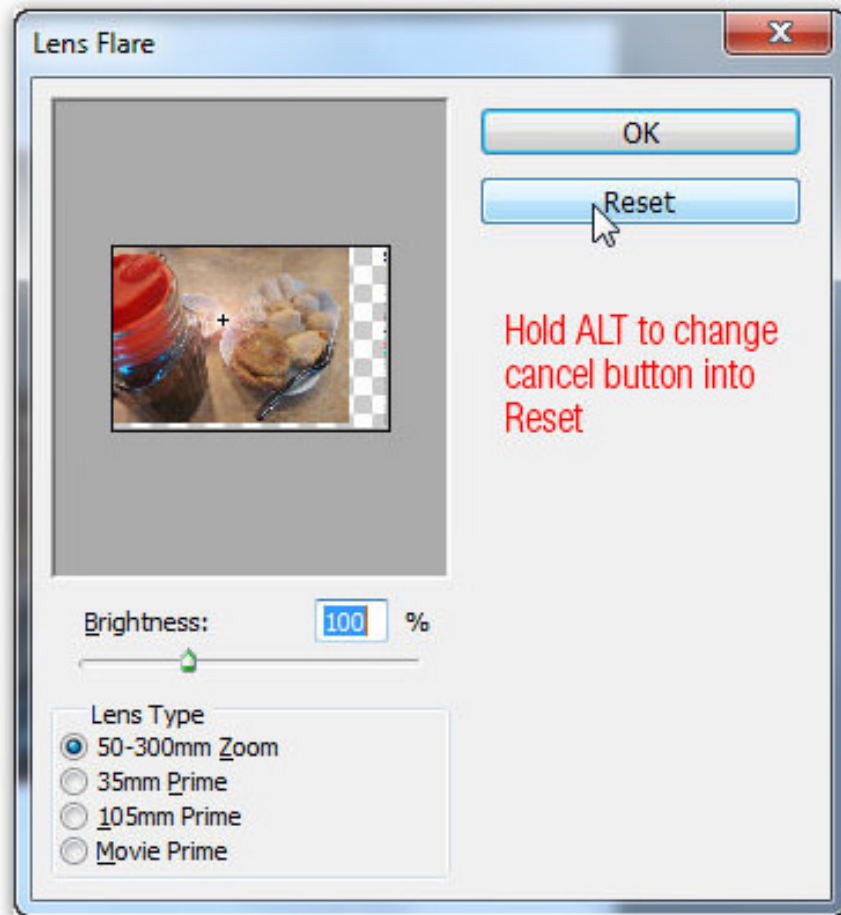
## 28. How to see hidden changes

When you drag a large layer from one file to another, if the receiving file has a small canvas interface, you won't be able to see the changes when pressing **Ctrl + T**. To view them, press **Ctrl + 0** (or **Cmd + 0** on the Mac) to shrink the image and you can see the changes easily.



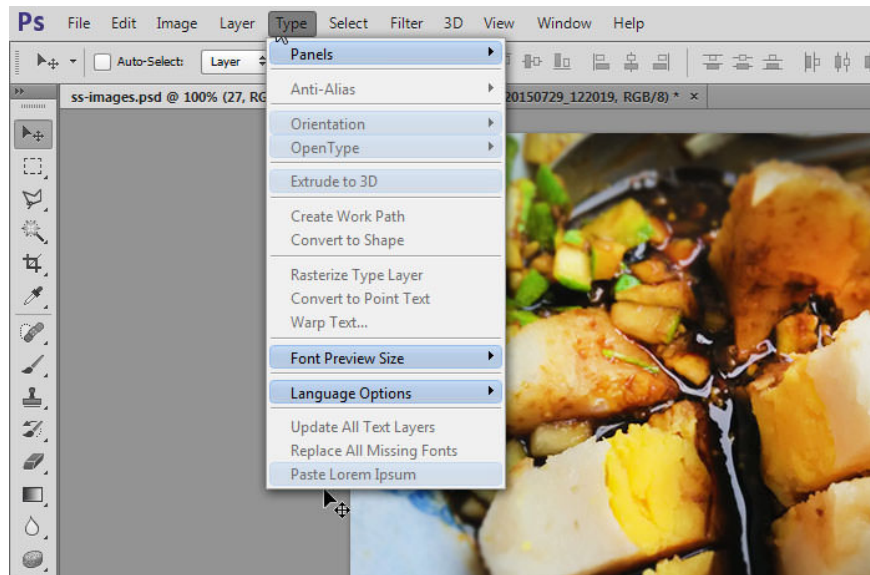
## 29. Move the Cancel button to Reset to easily restore the operation

Most dialogs in Photoshop have only a few OK / Apply and Cancel buttons. Occasionally, we need to cancel (Cancel) and then reopen the dialog. You can reset all or at least some of the pop-ups to the default settings by holding down the **Alt** key (or **Option** on the Mac) when you are opening a dialog box. At this time, the **Cancel** button will be changed to the **Reset** button .



## 30. How to access all new features in the updated version

You've just upgraded Photoshop to the latest version and probably want to get all of its new features. Simply go to **Windows => Workspace => New** in Photoshop CS6. At this point, the software will close all the control panels and replace them with a table showing all the updated features. Also, if you go back to the Window menu, you can also see a lot of features that are clearly highlighted.



You finished reading the article "**49 smart Photoshop tips you need to know (Part 2)**" edited by the [TipsMake](#) team. We hope this article has provided you with many useful tech tips and tricks. You can search for similar articles on tips and guides. Thank you for reading and for following us regularly.

---