

4 ways to check BitLocker status in Windows 10

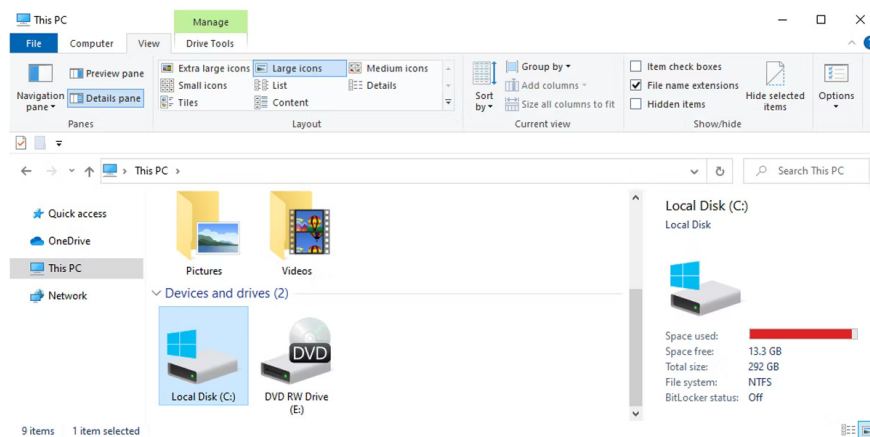
BitLocker encrypts hard drives and protects files from remote hacking or physical theft. Here are 4 easy methods to check BitLocker status on Windows 10 devices.

BitLocker encrypts hard drives and protects files from remote hacking or physical theft. Here are 4 easy methods to check BitLocker status on Windows 10 devices.

1. Check BitLocker status using File Explorer

The easiest way to check if a file is encrypted with BitLocker is to use File Explorer:

1. Press **Win + E** to open File Explorer.
2. Click **This PC** from the left menu, then select the drive you want to check. For example, we will check the Local Disk drive (C:).
3. Click the **View** tab in the upper left corner then select **Details pane**.

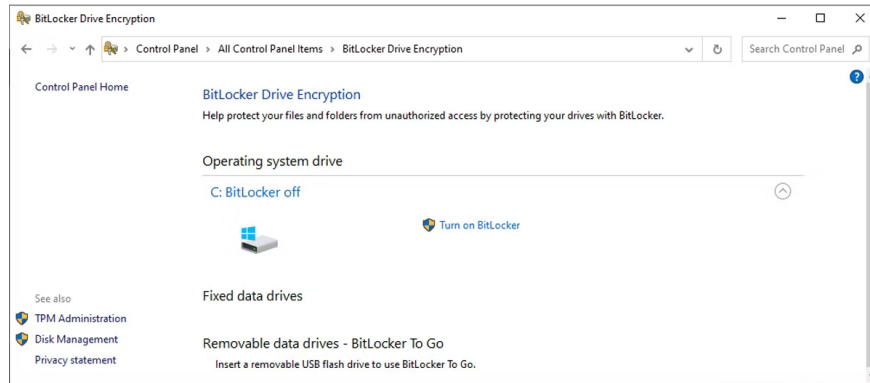


From there, you will see the BitLocker status in the lower right corner of the screen.

2. Check BitLocker status using Control Panel

Control Panel is another tool that helps you check BitLocker status quickly and easily.

1. Click the search bar in the Start menu, type **Control Panel**, then select "Control Panel" when it appears.
2. Click the **View By** drop-down menu in the upper right corner and select **Large Icons** or **Small Icons**.
3. Select **BitLocker Drive Encryption** from the menu. In the next window, the BitLocker status will be displayed above the hard drive icon.



3. Check BitLocker status using Command Prompt

If the first two methods don't work for any reason, applying a technical approach like using Command Prompt can be helpful.

Warning : Be cautious when using Command Prompt or PowerShell, especially when running commands with admin rights. Incorrect commands may change system settings or affect PC functionality. Always make sure you are entering the correct command syntax to check BitLocker status to avoid unforeseen consequences.

To check BitLocker status using Command Prompt:

1. Click the search bar in the Start menu, type **Command Prompt** , then select **Run as administrator** .
2. Enter the following command and press **Enter** to check the BitLocker status of all drives on the device.

```
manage-bde -status
```



In the results, you will know whether BitLocker is enabled or not under "Protection Status".

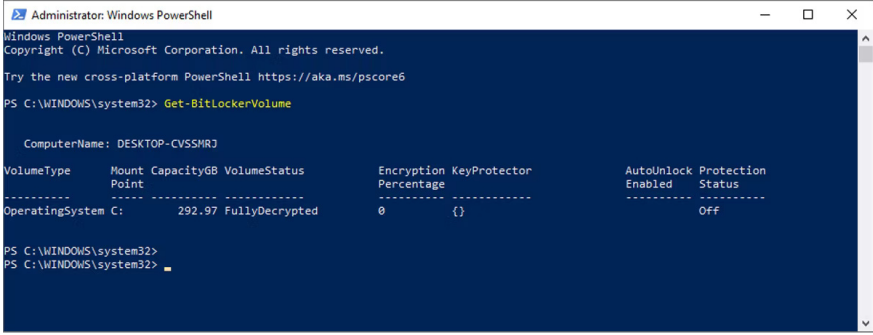
If you want to check the BitLocker status of a specific drive, enter **manage-bde -status** : in Command Prompt. So, if you want to check the status of your drive (C:), type **manage-bde -status C:** in Command Prompt and press **Enter**.

4. Check BitLocker status using PowerShell

You can also use Windows PowerShell to check BitLocker status:

1. Click the search bar in the Start menu, type **PowerShell** and then select the **Run as administrator** option
2. Type the following command and press **Enter** to check the BitLocker status of all drives on your PC.

`Get-BitLockerVolume`



```
Administrator: Windows PowerShell
Windows PowerShell
Copyright (C) Microsoft Corporation. All rights reserved.

Try the new cross-platform PowerShell https://aka.ms/pscore6

PS C:\WINDOWS\system32> Get-BitLockerVolume

ComputerName: DESKTOP-CVSSMRJ

VolumeType      Mount Point CapacityGB VolumeStatus Encryption Percentage KeyProtector AutoUnlock Protection
-----
OperatingSystem C:          292.97 FullyDecrypted 0 (%) {} Off
```

Check the results in "Protection Status" to see if BitLocker is enabled or not.

To check the BitLocker status of a specific volume, enter **Get-BitLockerVolume -MountPoint :** . For example, to view the status of drive (C:), type **Get-BitLockerVolume -MountPoint C:** and press **Enter**.

You finished reading the article "**4 ways to check BitLocker status in Windows 10**" edited by the [TipsMake](#) team. We hope this article has provided you with many useful tech tips and tricks. You can search for similar articles on tips and guides. Thank you for reading and for following us regularly.