

4 ways to automatically lock your Windows 11 computer

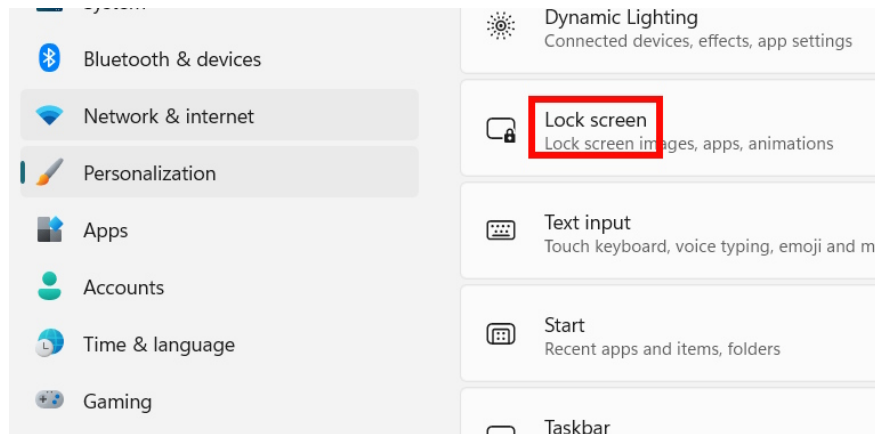
If you care about privacy and don't want anyone prying into your computer, you can set it to automatically lock after inactivity.

The Win + L key combination is convenient for quickly locking your computer screen , but it's easy to forget when you leave the computer. If you care about privacy and don't want anyone prying, you can set your computer to automatically lock after inactivity. Below are several ways to automatically lock your Windows computer.

Using the Lock Screen on Windows

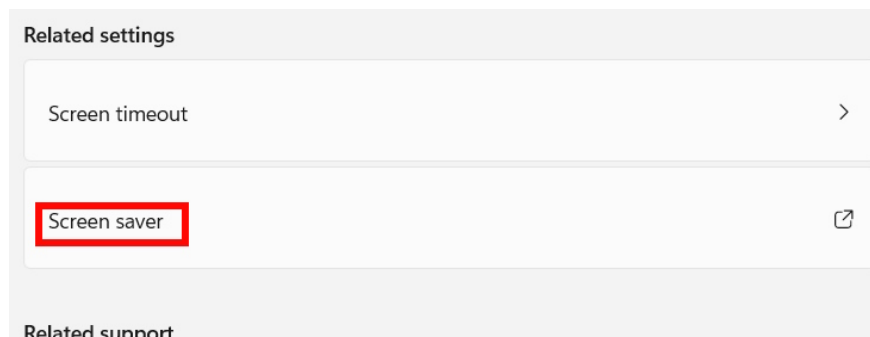
Step 1:

We need to open Settings, then tap on **Personalization** , and on the side, **tap on Lock screen** .



Step 2:

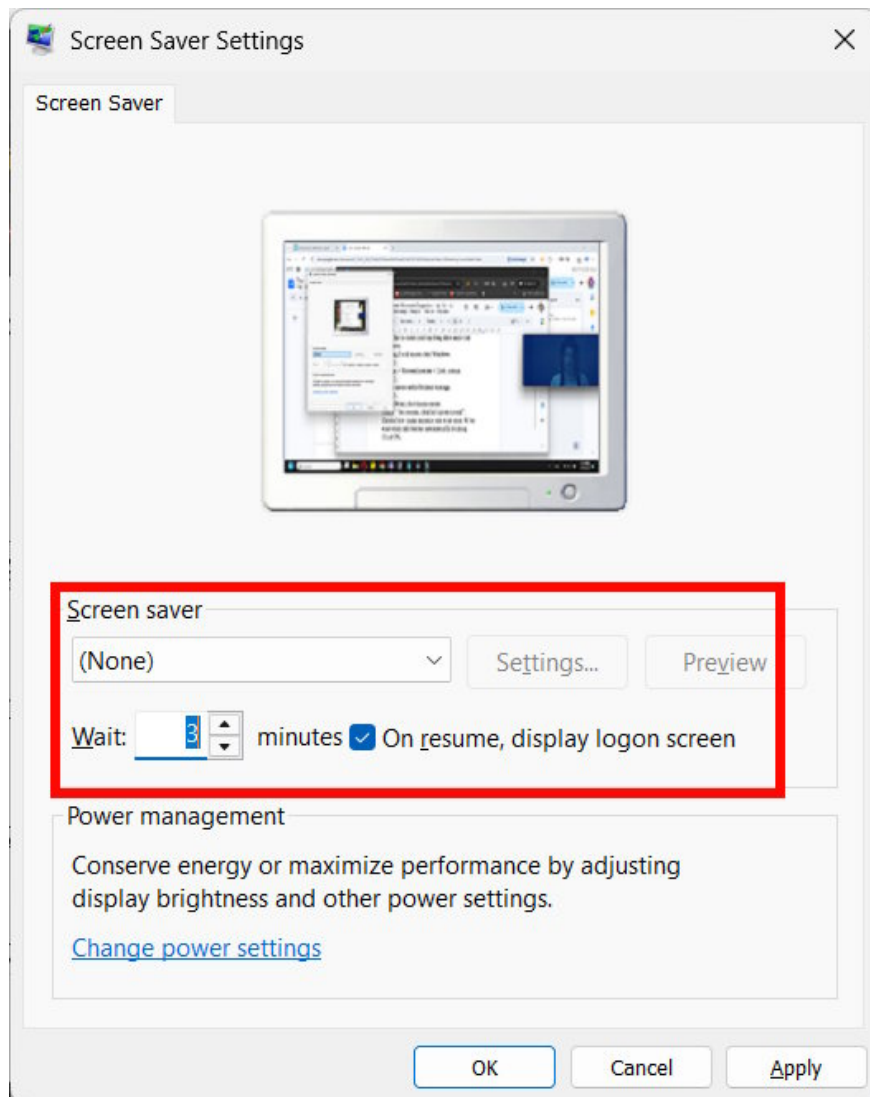
On the new interface, tap on **the Screen saver** settings under the Related settings section.



Step 3:

A new interface will appear; here, **check the box next to "None,"** then **click "On resume, display log-on screen."** You will then select the time in minutes for the computer to automatically lock.

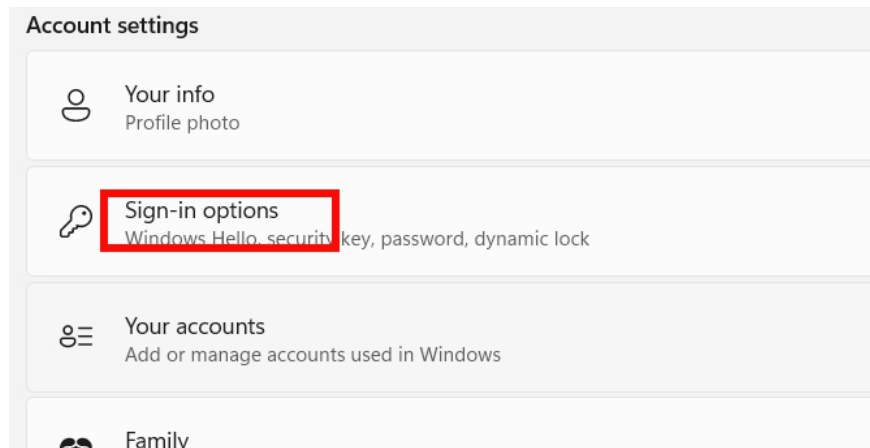
To disable automatic device locking, simply uncheck the "On resume, display log-on screen" setting.



Method 2: Using Dynamic Lock

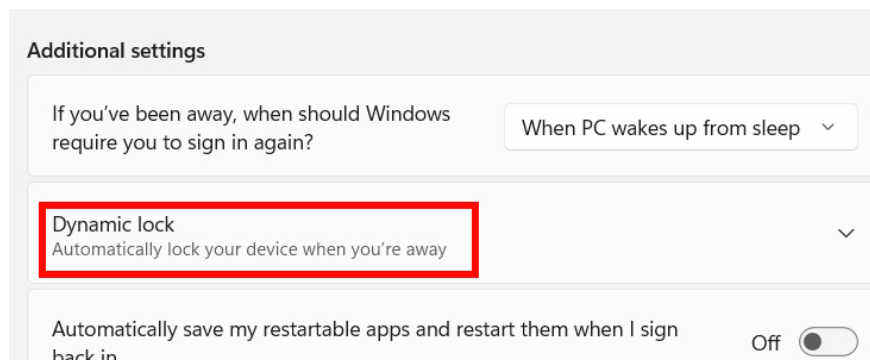
Step 1:

We also open Settings, then tap on **Accounts** , look to the right and select **Sign-in options** .



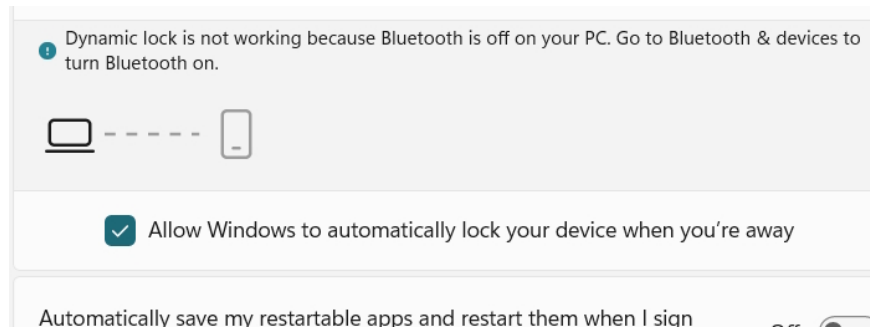
Step 2:

On the new interface, check the box next to **Dynamic lock** under Additional settings.



Step 3:

Here you need to check the box next to "**Allow Windows to automatically lock your device when you're away**".



However, for this feature to work, you must first add your phone to the list of paired devices in Bluetooth & devices and keep Bluetooth turned on on your phone. If you turn off Bluetooth, Dynamic Lock will assume you are absent and turn off the screen.

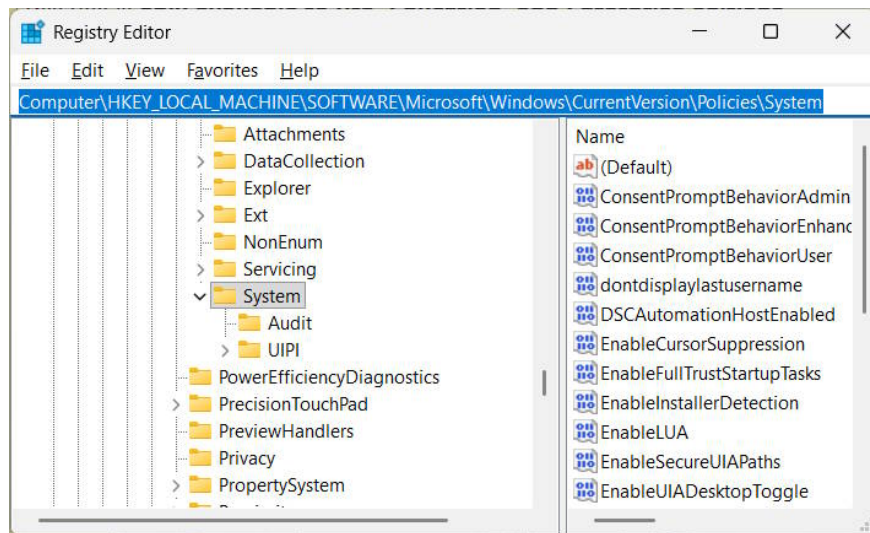
Method 3: Using Registry Editor

Step 1:

Type **regedit** into the Windows search box and click **Run as administrator**.

Then access the link below.

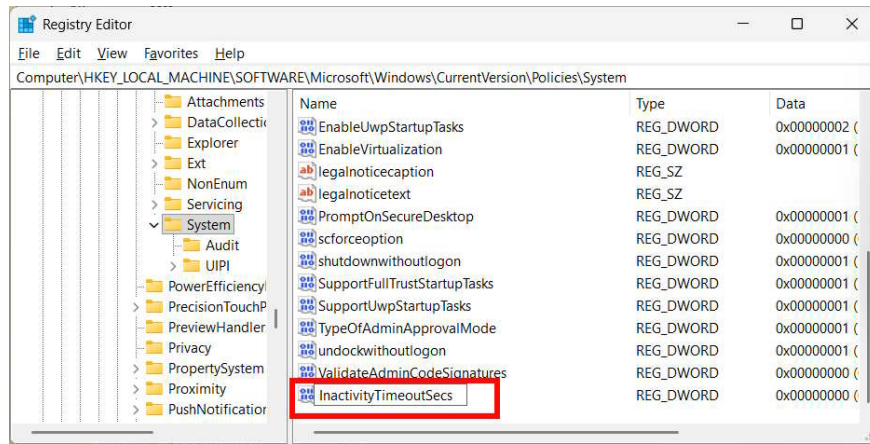
Computer\HKEY_LOCAL_MACHINE\SOFTWARE\Microsoft\Windows\CurrentVersion\Policies\System



Step 2:

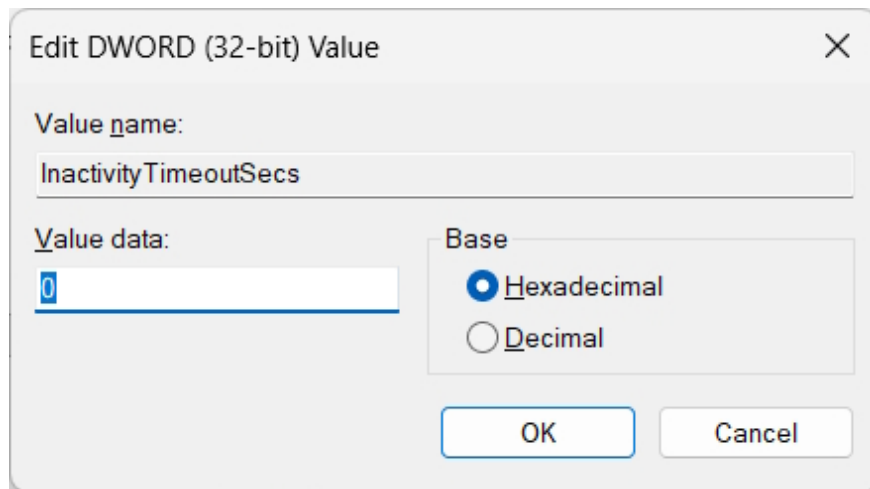
Double-click on **InactivityTimeoutSecs** if it appears.

If you can't find it, right-click on an empty space, select **New > DWORD (32-bit) Value**. Name it **InactivityTimeoutSecs** and double-click on it.



Step 3:

Select decimal format and enter a number from 0 to 599940 to represent the inactivity time (in seconds). Your computer will automatically lock after the specified period.

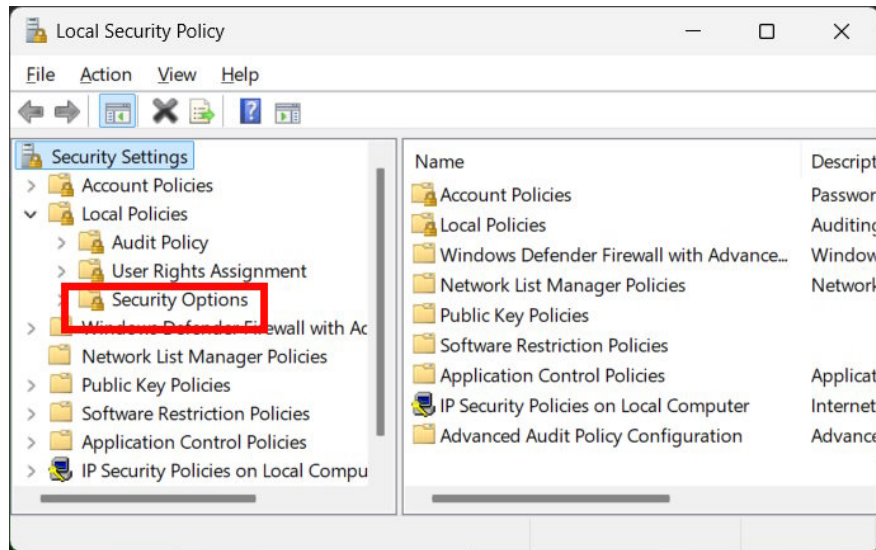


Method 4: Using Local Security Policy

Applies to Pro, Education, and Enterprise accounts.

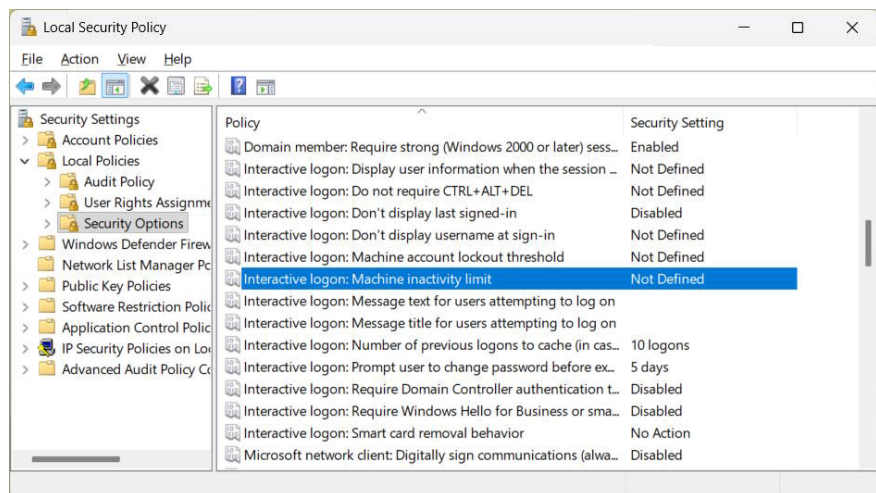
Step 1:

Type **secpol.msc** into the **Run dialog box** and select **Local Policies > Security Options** .

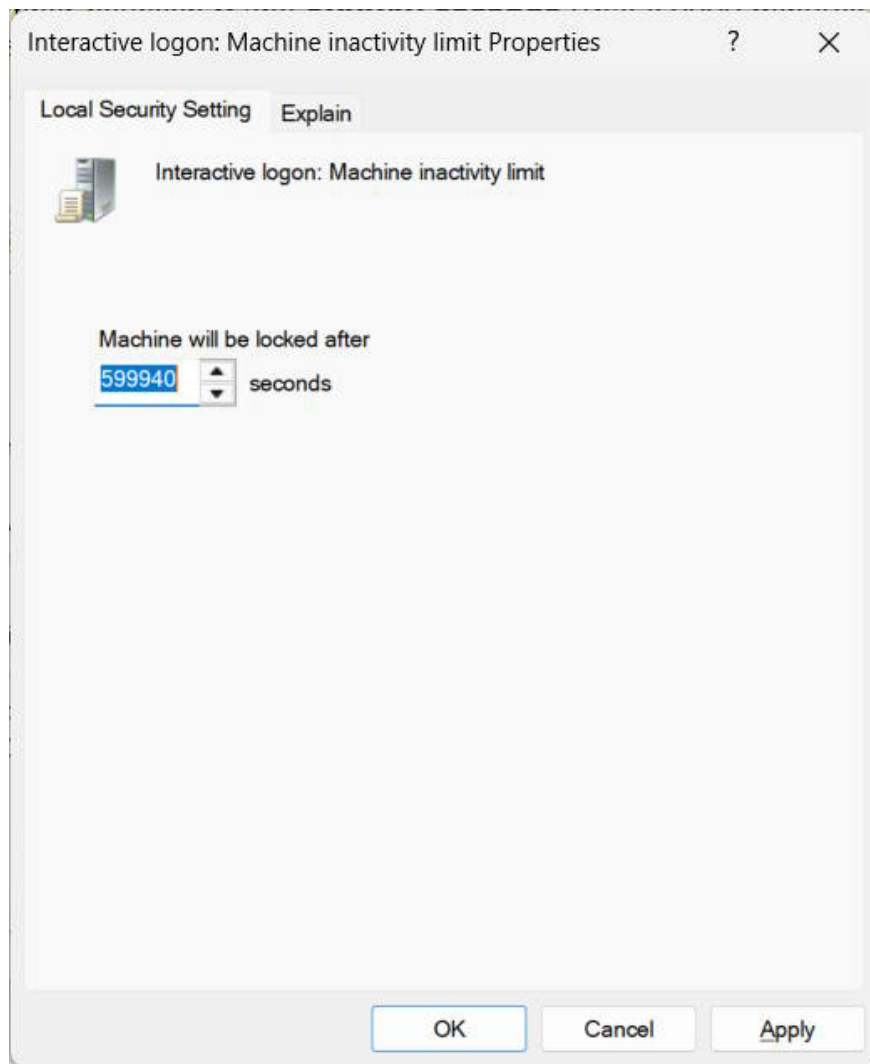


Step 2:

Look to the side and click on the Interactive logon: Machine inactivity limit option.



Here you also need to enter the time in seconds for the computer to lock when no activity is taking place.



You finished reading the article "**4 ways to automatically lock your Windows 11 computer**" edited by the [TipsMake](#) team. We hope this article has provided you with many useful tech tips and tricks. You can search for similar articles on tips and guides. Thank you for reading and for following us regularly.
