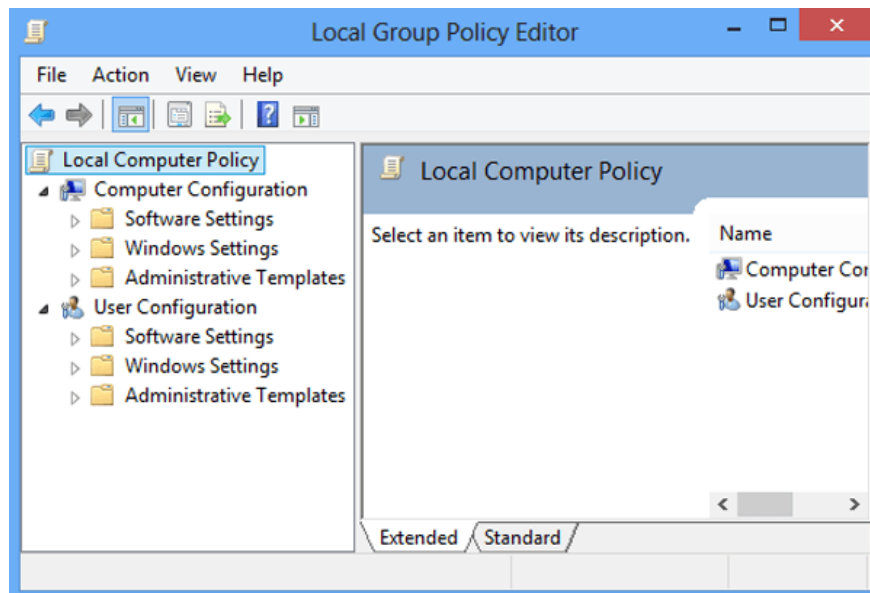


4 tips to open Local Group Policy Editor on Windows 8 / 8.1

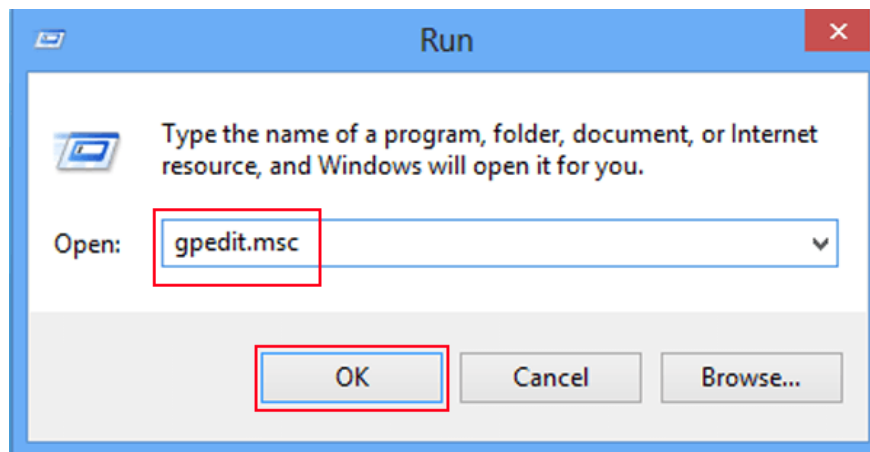
In the Local Group Policy Editor, you can set the deletion of the notification history, set up the account lock to limit the number of logins, etc. In the article below, Network Administrator will show you 4 ways to open. Local Group Policy Editor on Windows 8 and Windows 8.1.

In the Local Group Policy Editor, you can set the deletion of the notification history, set up the account lock to limit the number of logins, etc. In the article below, Network Administrator will show you 4 ways to open. Local Group Policy Editor on Windows 8 and Windows 8.1.



Here are 4 ways to open Local Group Policy Editor on Windows 8:

1. Open Local Group Policy Editor by running the command



First, press **Windows + R** key combination to open the Run dialog box, then enter **gpedit.msc** in the Run window and select **OK** .

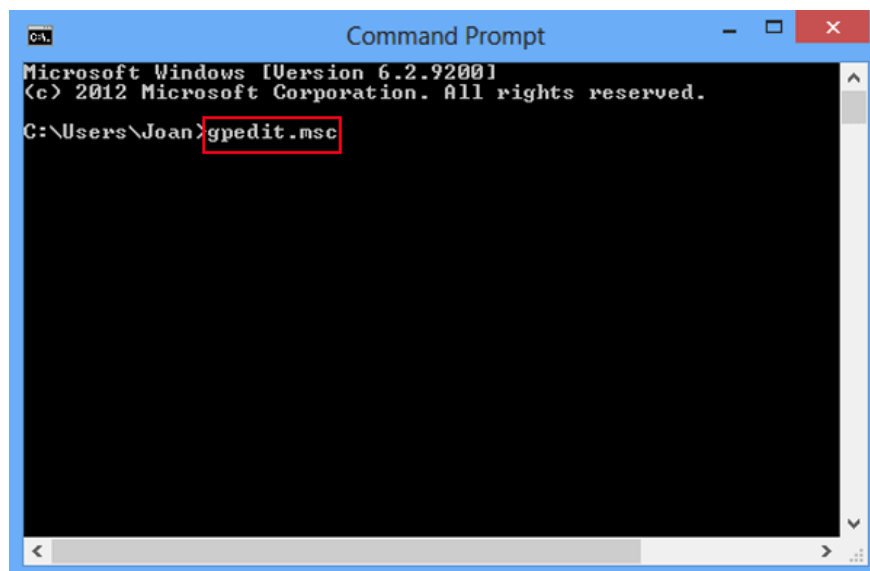
2. Open Local Group Policy Editor via Command Prompt

Step 1:

Open Command Prompt:

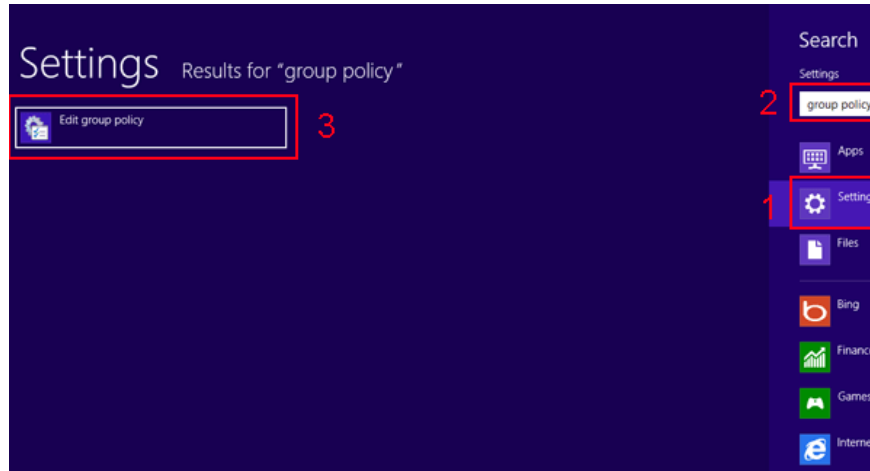
Press **Win + R** key combination to open the Run dialog box, then type **cmd** in the Run dialog window and click **OK** to open the Command Prompt.

Step 2:



At this time, the Command Prompt window will appear, enter **gpedit.msc** into the Command Prompt window and select **OK**.

3. Open the Group Policy Editor on the Search pane



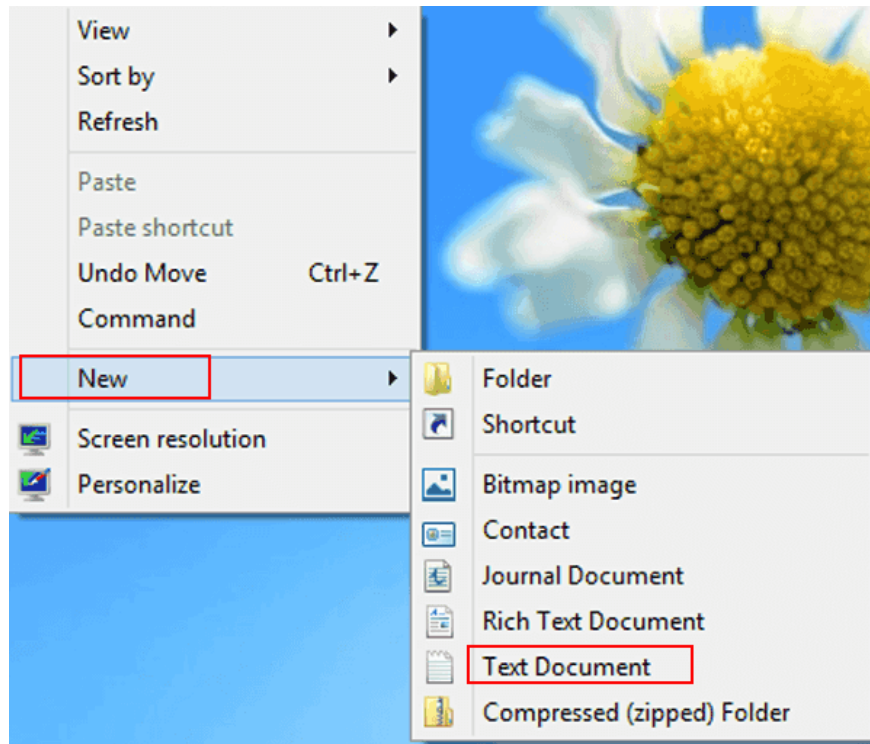
Press **Windows + F** key combination to open Search, then select **Setting** and then type **Group Policy** in the Search frame and then select **Edit Group Policy**.

4. Use the Group Policy shortcut

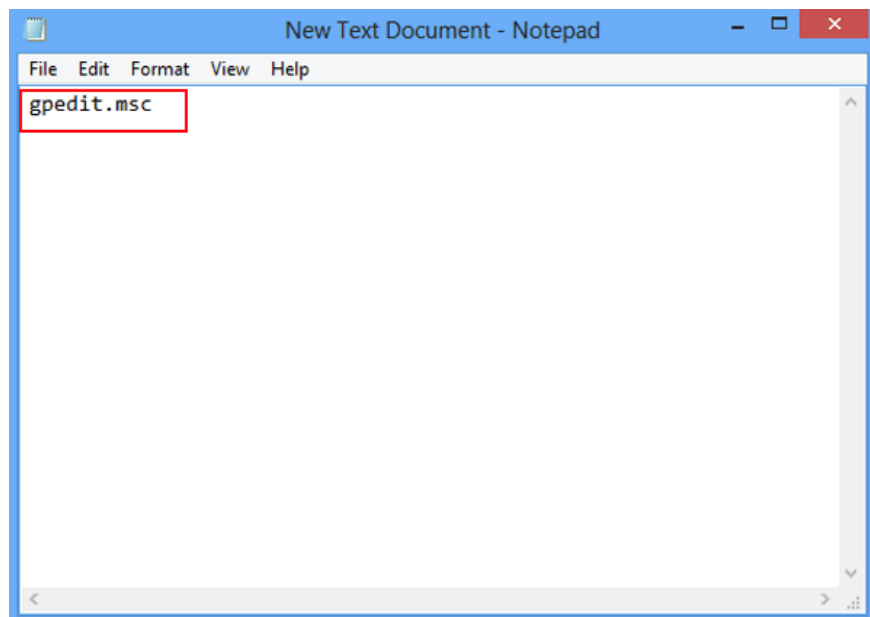
Step 1:

Create a Group Policy shortcut on the Desktop:

1. On the Desktop, right-click any space and select **New => Text Document** .

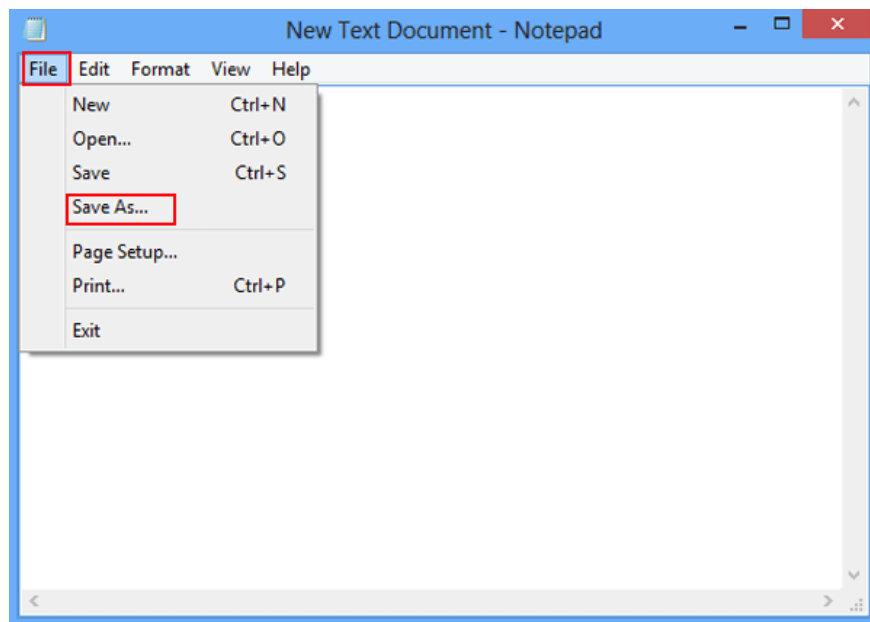


2. On the Text document, type **gpedit.msc**.

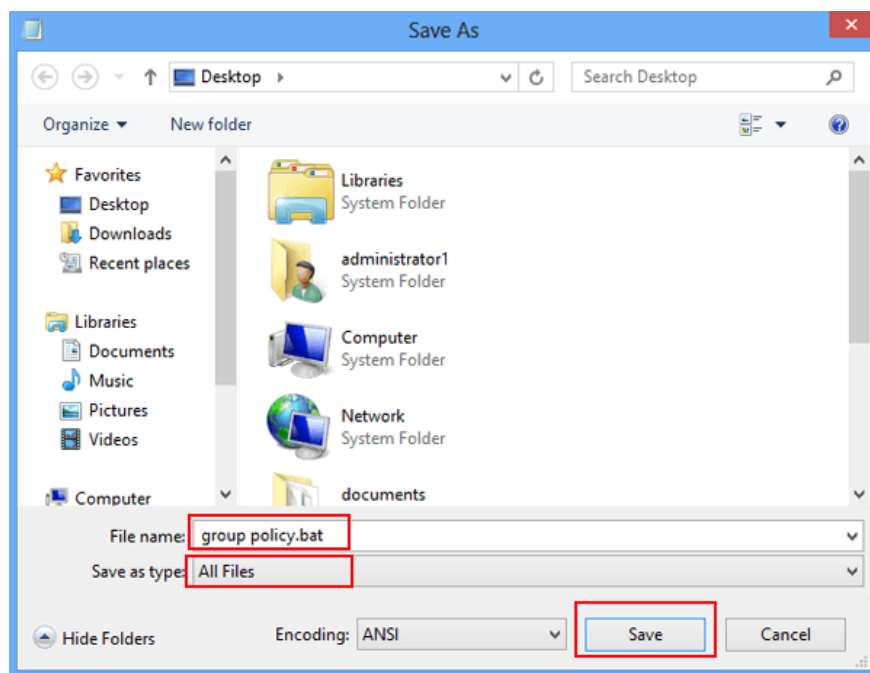


3. Save Text document:

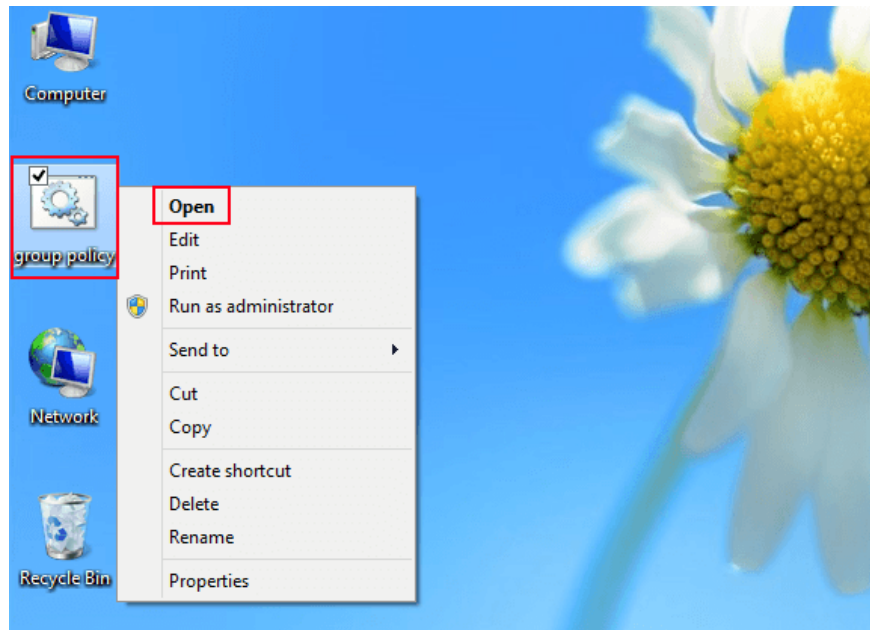
- Click **File** select **Save As** .



- On the Save As window, name the file " **group policy.bat** ", in Save as type, select **All files** and select **Save** to save the file.



Step 2:



Right-click the shortcut you just created, select **Open**.

You can refer to some of the following articles:

1. **5 ways to speed up Windows 8**
2. **Instructions for accessing BIOS on Windows 8**
3. **Use wireless network in Windows 8**

Good luck!

You finished reading the article "**4 tips to open Local Group Policy Editor on Windows 8 / 8.1**" edited by the [TipsMake](#) team. We hope this article has provided you with many useful tech tips and tricks. You can search for similar articles on tips and guides. Thank you for reading and for following us regularly.