

# 4 common actions users perform when using Ultraviewer

Similar to TeamViewer, UltraViewer is also a remote computer control software that is currently chosen by many people, allowing them to work from anywhere. To use UltraViewer easily, you can refer to the 4 user-friendly operations below.

Have you ever wondered how people use software, or which features users are most interested in? The following **four actions commonly performed by Ultraviewer users** will show you which features they are most interested in and use most frequently.



## How to use UltraViewer on a phone, Can UltraViewer be used with the screen off?

Ultraviewer offers many features that users can explore during use. Of course, the most basic feature, remote computer control, is something everyone who installs this software will use. So, you might be wondering if there are any other questions users might have about remote computer control using Ultraviewer? Or are there any features of Ultraviewer that users might have questions about during use? The following four steps for using Ultraviewer will explain them to you.

### Article contents:

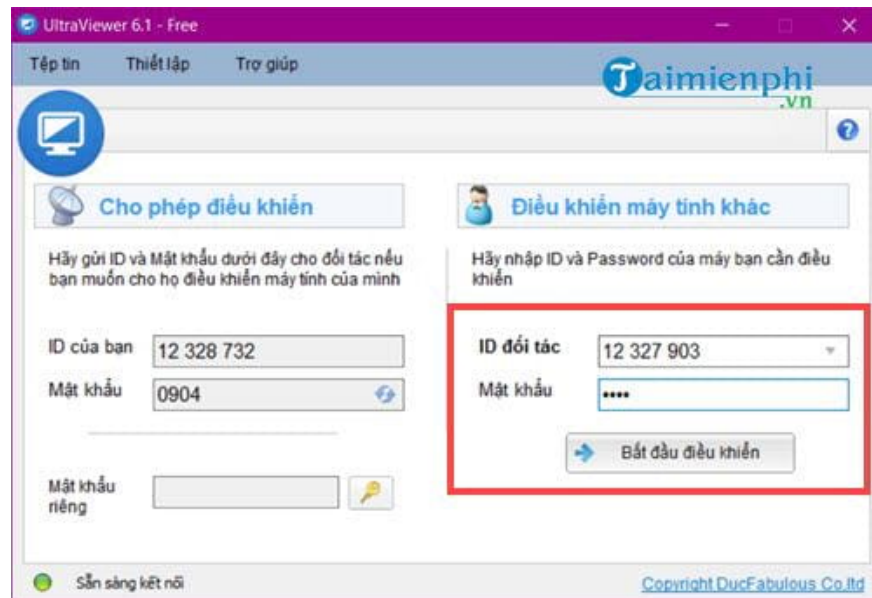
1. Controlling another computer on Ultraviewer.
2. How can someone else control me?
3. How to chat with each other on Ultraviewer?
4. Stopping someone from controlling your computer using Ultraviewer.

## 4. User operations when using Ultraviewer

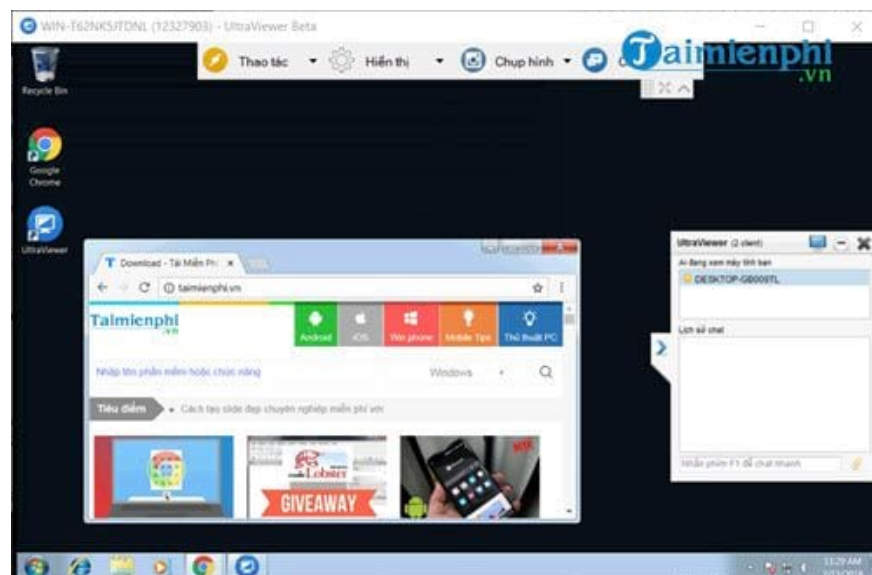
## 1. Control another computer on Ultraviewer

This is the most popular feature used by Ultraviewer users, and of course, the main purpose of using Ultraviewer is to control another person's computer from your own. This is also a basic question that many readers often ask when they want to understand how Ultraviewer works.

To control another person's computer using Ultraviewer, users need to **know the partner's ID and password** and enter them. These two details are available on **the left side of the software interface**. Then, click "Start Control".

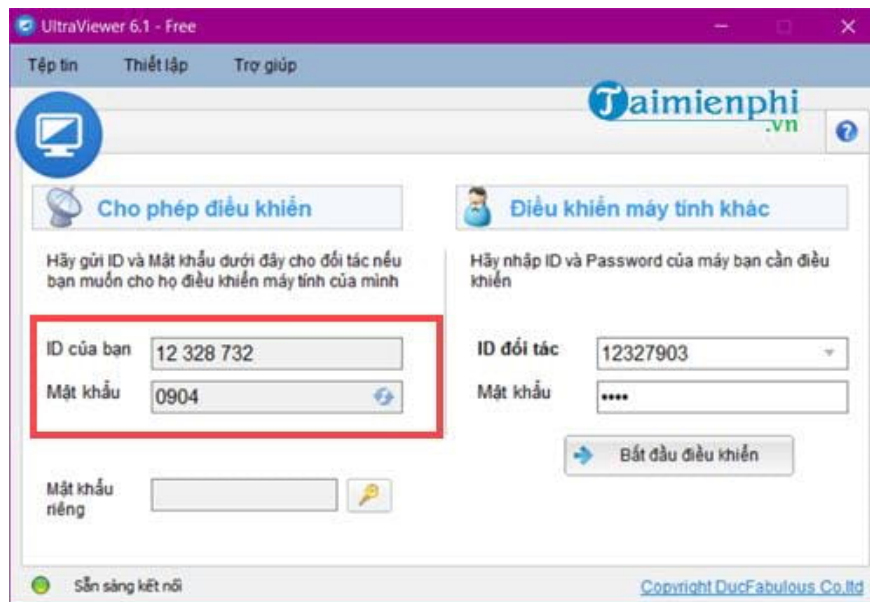


So, you can now control someone else's computer with just one step.

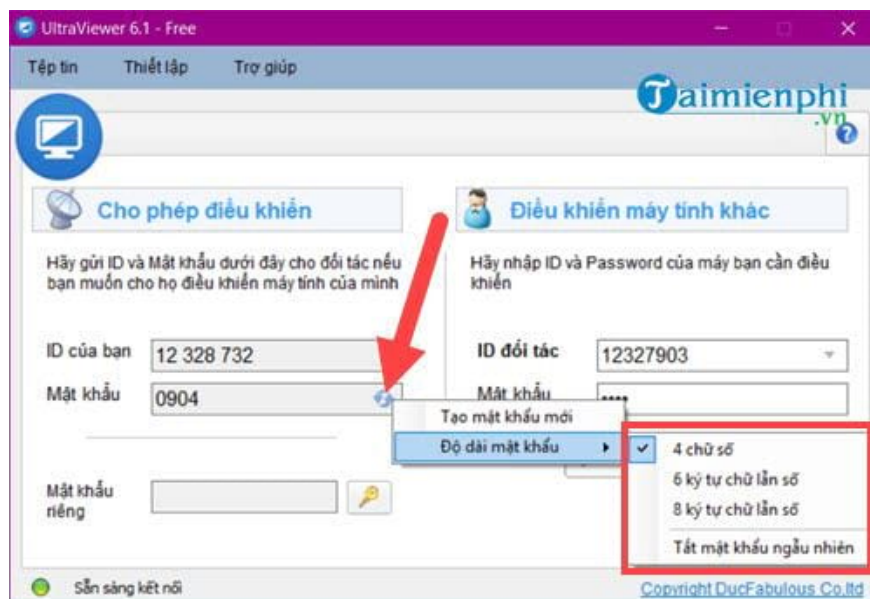


## 2. How do others control me?

Similar to the section above, when you open the Ultraviewer software, **your ID and password** will appear . Copy both of these details and give them to the person who needs to control your computer so they can access it.

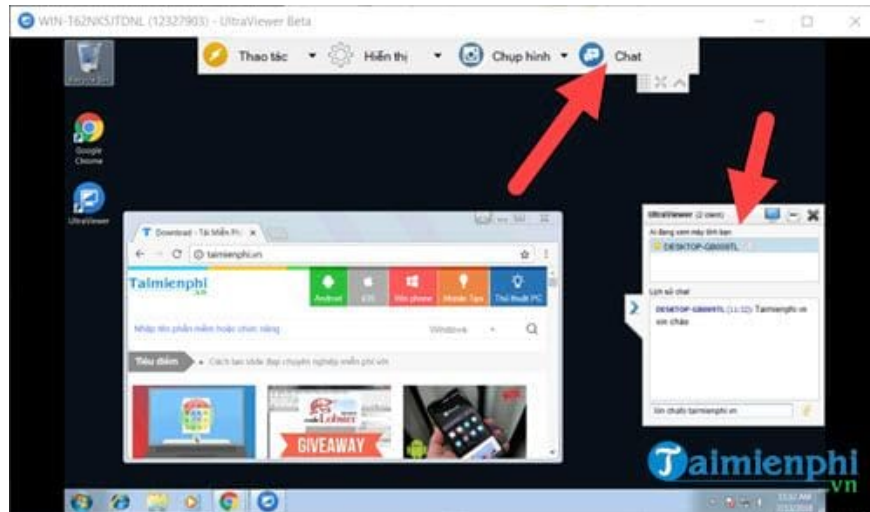


Also, don't worry because **passwords change constantly** , and you can change the password length if you want, or remove the password altogether if it's for someone close to you or yourself.



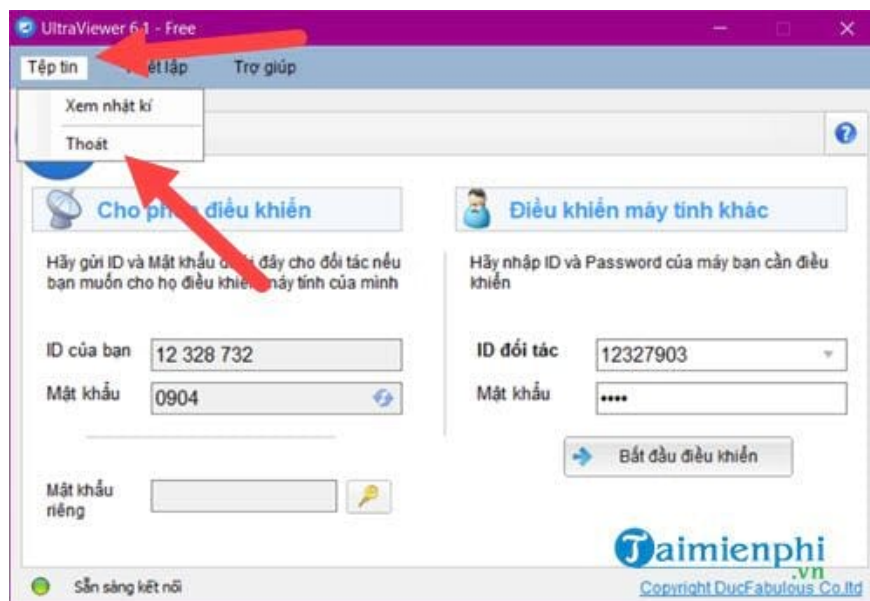
## 3. How do I chat with someone in Ultraviewer?

How to open the Ultraviewer chat window? While controlling a computer using Ultraviewer, one common user action is chatting. By default, this window appears in the bottom right corner of the screen on both sides. If it doesn't appear, press F1 or click the "Chat with client" icon .



#### 4. Stop allowing someone to control your computer using Ultraviewer.

To stop controlling another computer from another computer using Ultraviewer, users simply need to **close the Ultraviewer software** .



The control panel will then report a connection loss, wait 60 seconds, and then shut down automatically, or the Ultraviewer software will also shut down.



Above are 4 common actions users perform with Ultraviewer. Do you know all of these Ultraviewer features? Refer to and update your software knowledge from TipsMake's articles.

From the article above, you will see that using Ultraviewer is completely simple with all its functions. Ultraviewer is in no way inferior to Teamviewer, and if you have the opportunity, try both software and compare them.

You finished reading the article "**4 common actions users perform when using Ultraviewer**" edited by the [TipsMake](#) team. We hope this article has provided you with many useful tech tips and tricks. You can search for similar articles on tips and guides. Thank you for reading and for following us regularly.