

4 basic difference between Windows Server and Windows Desktop

Windows Server is the operating system for servers, servers, so it will have differences compared to the Windows Desktop version we still see everyday. Keep these in mind when you need to choose to install Windows Server or Windows Desktop. They are also important when you need to restore, repair installation.

Windows Server is the operating system for servers - servers, so it will have differences compared to the Windows Desktop version we still see every day. Keep these in mind when you need to choose to install Windows Server or Windows Desktop. They are also important when you need to restore or repair the Windows installation.

In the comparison process, we will take the example of Windows 10 and Windows Server 2016, two versions that look at each other do not look different from each other, but actually not.

Features are different even if the basic code is the same

Common Windows versions and Windows Server that were born near that time will often be shared with kernels, such as Windows Server 2012 and Windows 8 or most recently Windows Server 2016 and Windows 10. They are similar to desktops, generally looks , you can even install and run the same software as Chrome, Office. But the similarity just stops there.

Windows Server features that Windows does not have:

Windows is often designed to perform computing tasks for the needs of ordinary users, while Windows Server manages many computers, data, and services that people access over the network. On Windows Server, there are many server software, advanced features and services such as Windows Deployment Services, DHCP, DNS, Active Directory Domain Services, File Server Resource Manager, HTTP print, SMB Direct, . Integration available security tool.

Windows Server is locked down (locked) to block the normal browsing. You cannot find Cortana, Microsoft Store, Timeline on Windows Server, unable to log in to Microsoft account, unable to synchronize Windows Server settings between devices, .

Features that Windows Server Windows with no or limited:

On Windows 10 you get quick and more frequent updates, with Timeline, with Cortana, with Your Phone, PWA, Windows Subsystem for Linux, Microsoft Store.

In addition, although Windows Server also has a desktop, Microsoft recommends installing Windows Server without a GUI (or deleting it), leaving only the command-line interface, reducing the cost of running the server.

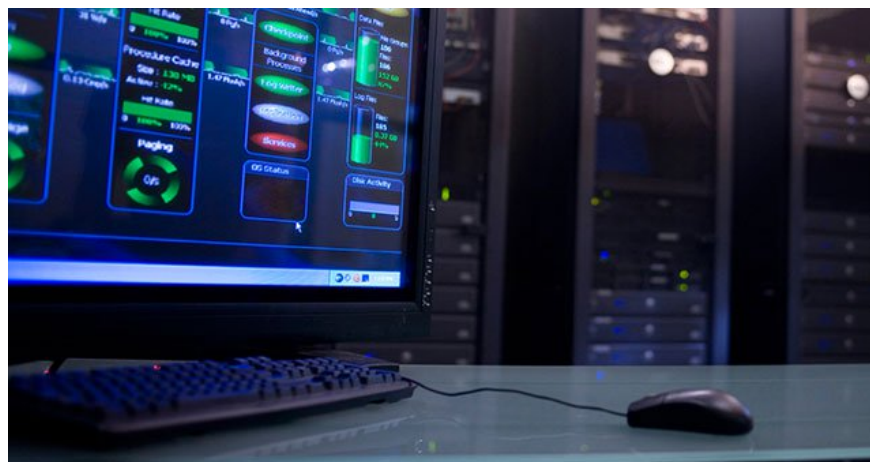
Windows Server supports advanced hardware

Windows server supports more memory

The basic difference between Windows Server and Windows is usually the amount of memory supported. The desktop version running Windows 10 Enterprise has a maximum memory of 4GB on x86 and 2TB on x64, Windows Server supports 24TB RAM. These numbers also vary depending on the version. Ordinary Windows users will not need such a large amount of RAM, but the server is different, they will take advantage of that huge amount of RAM to manage many users, computers and other virtual machines.

Windows Server supports more CPUs

Windows Server also uses hardware than Windows normally effective, especially the CPU. Windows will usually have less CPU than Windows Server. For example, Windows 10 Home only supports 1 physical CPU, Windows 10 Pro supports 2 CPUs while Windows Server 2016 supports 64 CPU sockets. Windows 10 32bit only supports 32 cores, 64bit supports 256 cores, but Windows Server does not limit the number of cores.



Consider choosing the Windows OS version you need

Windows Server allows more network connections

On Windows Desktop, network connections are limited to 10 to 20 connections. But Windows Server does not, it can support more, depending on the capabilities of the hardware.

Server OS is configured for tasks in the background

By default, Windows Server versions prioritize running tasks and services in the background. While the desktop version to focus on the task directly (foreground). Although this priority may change, the Desktop version will not be as efficient as the Server version.

Finally, Windows Server is more expensive

If you have Windows 7, 8, 8.1 keys, you can install Windows 10 for free. But Windows Server 2016 is not easy to buy (it's aimed at businesses) and is very expensive. Windows Server 2016 licenses can range from \$ 500 to \$ 6,200 depending on the size of the business.

With the information above, you have a basic view of Windows and Windows Server and know the difference between them. If you intend to install Win for your home computer to play the game, every Windows 10 and Windows 7 will whip. As for Windows Server, you know where to install it, unless you intend to learn, study, be a network administrator, otherwise you don't need to care about it.

You finished reading the article "**4 basic difference between Windows Server and Windows Desktop**" edited by the [TipsMake](#) team. We hope this article has provided you with many useful tech tips and tricks. You can search for similar articles on tips and guides. Thank you for reading and for following us regularly.