

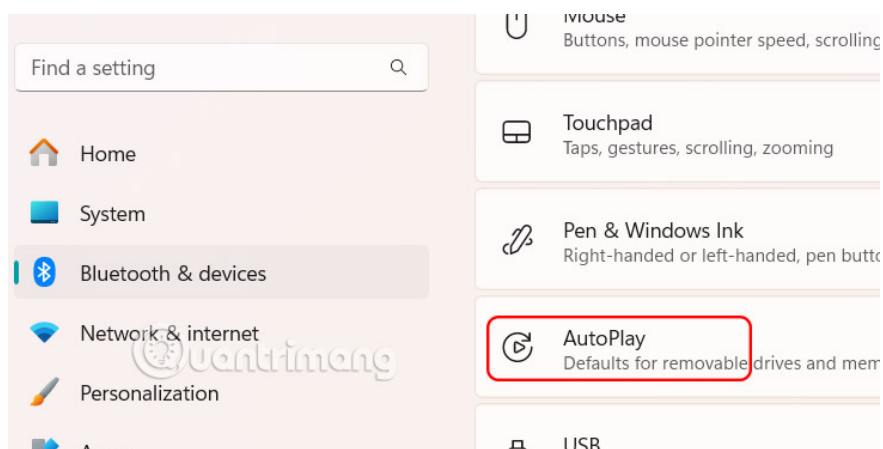
3 Ways to Enable and Disable Windows 11 AutoPlay

Although it is quite convenient, many people do not like AutoPlay because of security issues. In this guide, you will learn some ways to enable or disable AutoPlay Windows 11.

AutoPlay is a useful feature of Windows that automatically executes when you connect external media or devices such as USB drives, memory cards, or DVDs. Depending on the type of content detected, AutoPlay can open File Explorer, launch a media player, or prompt an input dialog. Although it is quite convenient, many people do not like AutoPlay because of security concerns. In this guide, you will learn a few ways to enable or disable AutoPlay in Windows 11.

Enable or disable Windows 11 AutoPlay via Settings

Open Settings on your computer, then click on **Bluetooth & devices** and then click on **AutoPlay** next to it.



Then turn off AutoPlay at Use AutoPlay for all media and devices .

Bluetooth & devices > AutoPlay

Use AutoPlay for all media and devices

Off

Choose AutoPlay defaults

Removable drive

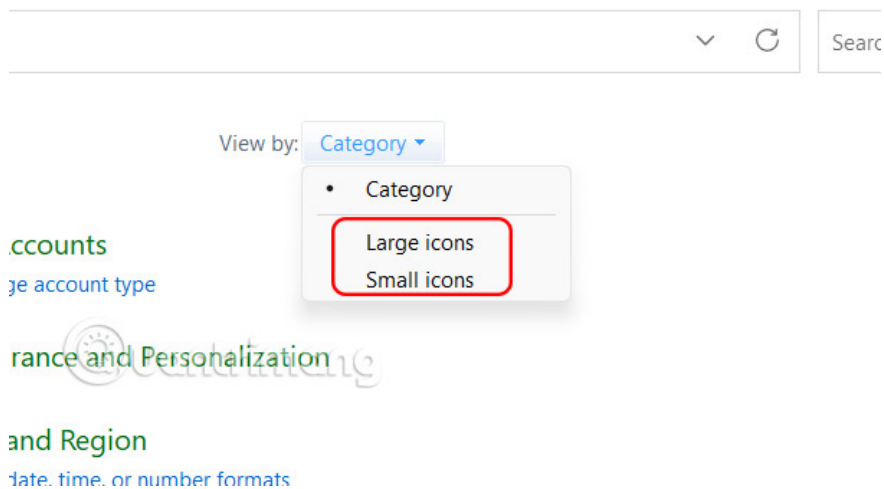
Choose a default

Memory card

Choose a default

Apple iPhone

In the **Choose AutoPlay defaults** section , select actions for **Removable drive** and **Memory card** .

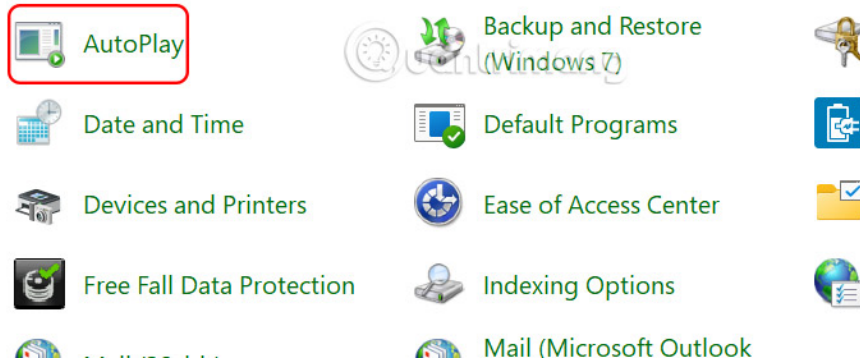


Turn on, turn off AutoPlay Windows 11 via Control Panel

Step 1:

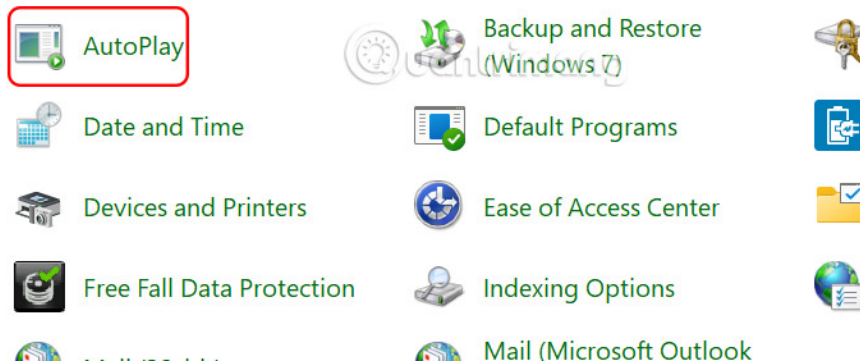
Open **Control Panel** on your computer and **click on Small icons or Large icons** .

Adjust your computer's settings



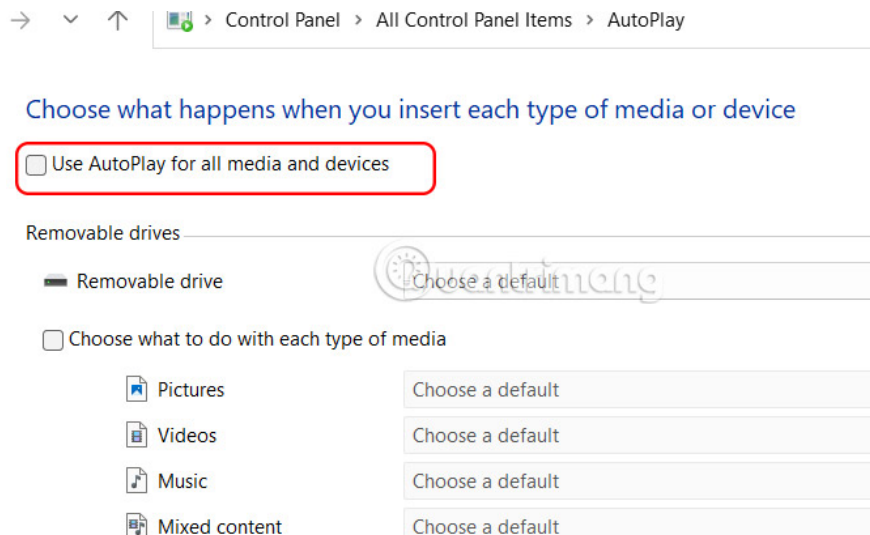
Now you **click on AutoPlay** to adjust this mode on the computer.

Adjust your computer's settings



Step 2:

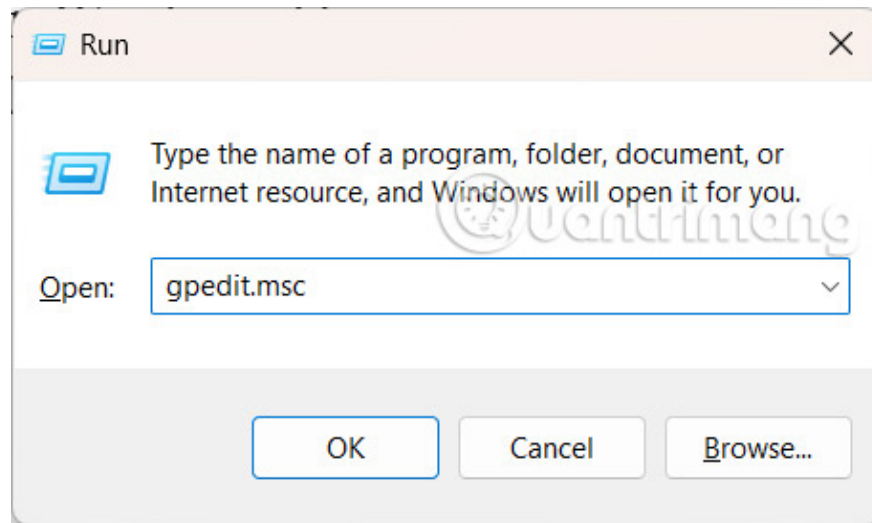
Switch to the new interface and **turn off Use AutoPlay for all media and devices** if you don't want to use AutoPlay on Windows 11.



How to enable and disable AutoPlay via Group Policy

Step 1:

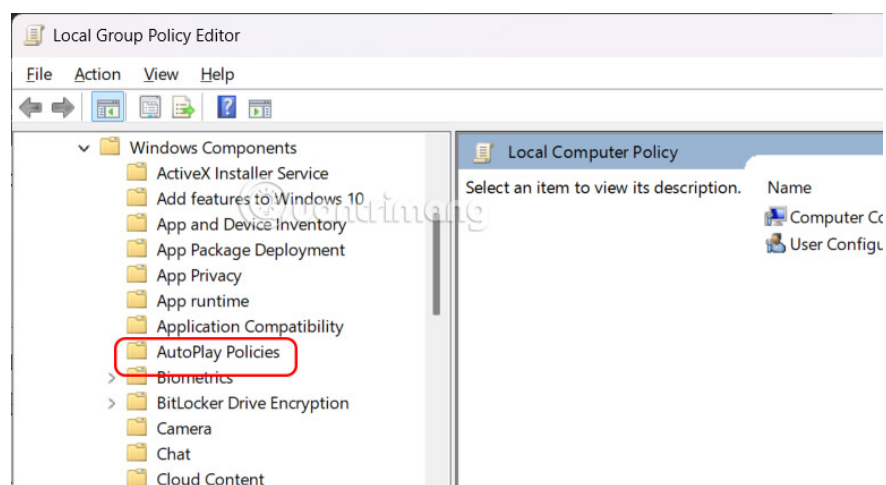
Open the **Run dialog box** and click **gpedit.msc** to access Group Policy.



Step 2:

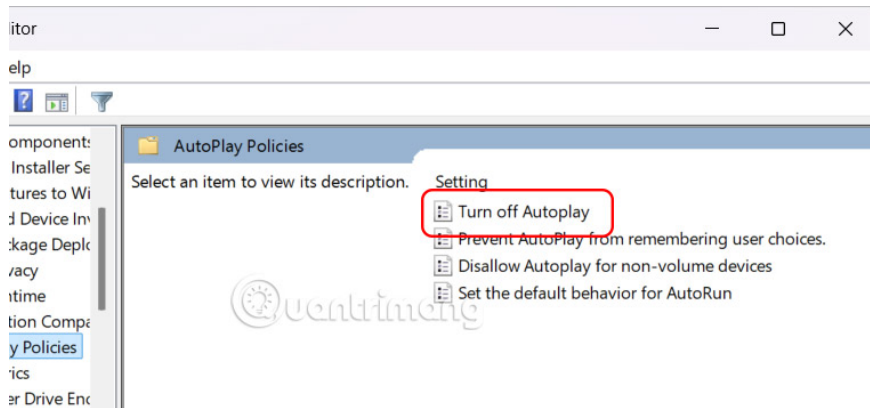
Now you access the link below.

Computer Configuration > Administrative Templates > Windows Components > AutoPlay Policies

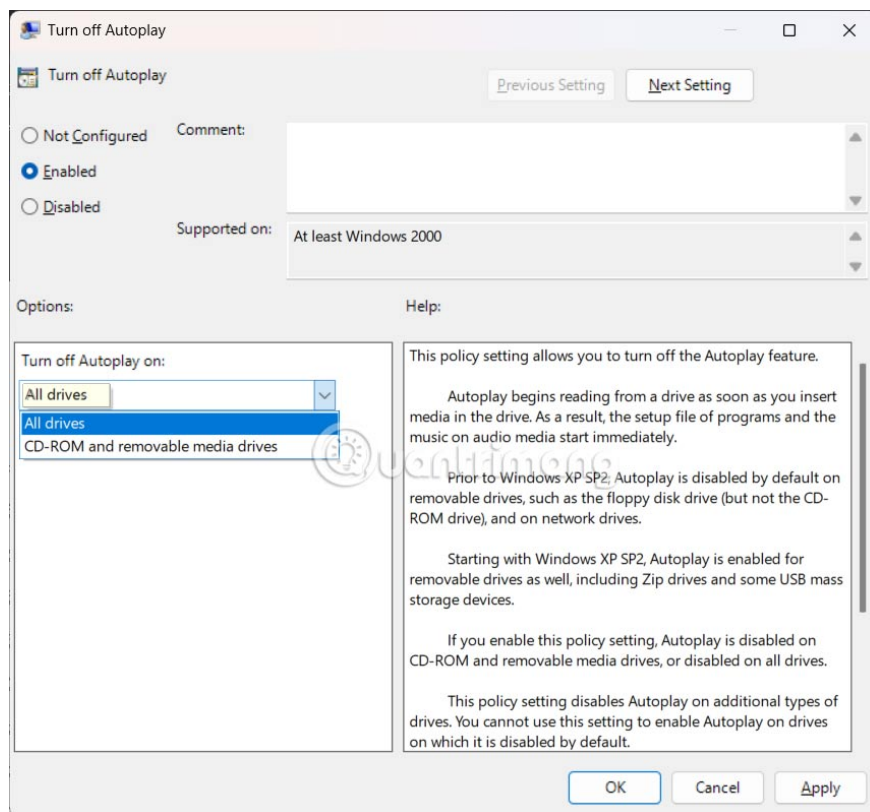


Step 3:

Look to the side and **double click on the Turn off AutoPlay value** .



To display the new interface, **select Enabled** and then **click All drives** at Turn off AutoPlay on to turn off autoplay on all drives or select CD-ROM and removable media drives to turn off autoplay on these media.



You finished reading the article "**3 Ways to Enable and Disable Windows 11 AutoPlay**" edited by the [TipsMake](#) team. We hope this article has provided you with many useful tech tips and tricks. You can search for similar articles on tips and guides. Thank you for reading and for following us regularly.