

3 ways to limit Windows Defender CPU usage in Windows 10

To prevent Windows Defender from using your CPU too much, you can use the following methods to limit the use of Windows Defender CPU in Windows 10.

Is the Windows Defender Service using high CPU at all times?

If you have real-time protection turned on, Windows Defender will perform a background scan and this can cause high CPU usage.

To prevent Windows Defender from using your CPU too much, you can use the following methods to limit the use of Windows Defender CPU in Windows 10.

Restrict Windows Defender CPU usage through PowerShell

1. Open Windows PowerShell as an administrator and issue the following command. It will display the current maximum CPU usage limit for Windows Defender.

```
Get-MpPreference | select ScanAvgCPULoadFactor
```

2. When you need to reduce CPU usage, type the following command and press Enter. Windows Defender will not use more than 30% of the CPU.

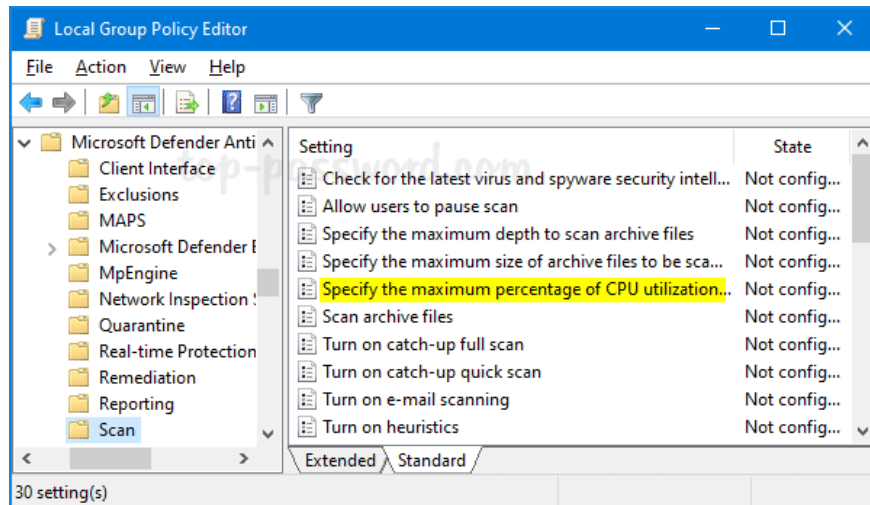
```
Set-MpPreference -ScanAvgCPULoadFactor 30
```

Limit Windows Defender CPU usage through Group Policy

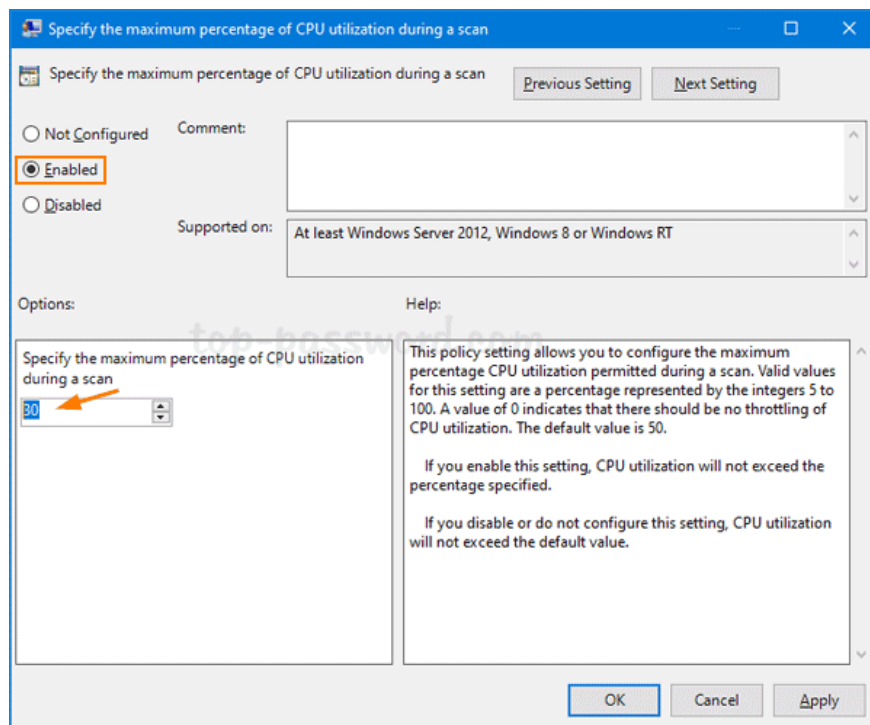
1. Open Local Group Policy Editor and browse to:

Computer Configuration > Administrative Templates > Windows Components > Microsoft Defender

On the right, double-click the policy **Specify the maximum percentage of CPU utilization during a scan**.



Double click the policy Specify the maximum percentage of CPU utilization during a scan
 2. Select the **Enabled** option and limit the Windows Defender's CPU usage to 30% or whatever percentage you prefer. Click **Apply** and then click **OK**.



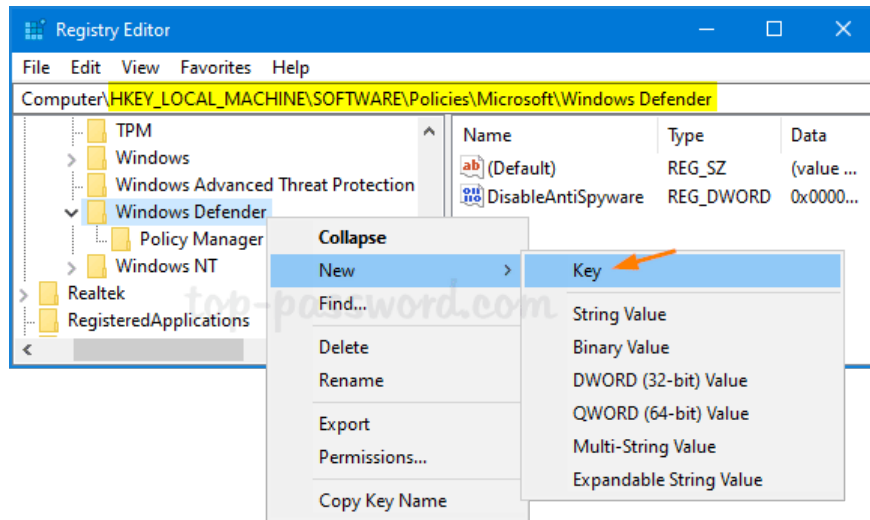
Select the Enabled option and limit the CPU usage of Windows Defender
 3. Restart the computer to apply the changes.

Restrict Windows Defender CPU usage through Registry Editor

1. Open Registry Editor and navigate to:

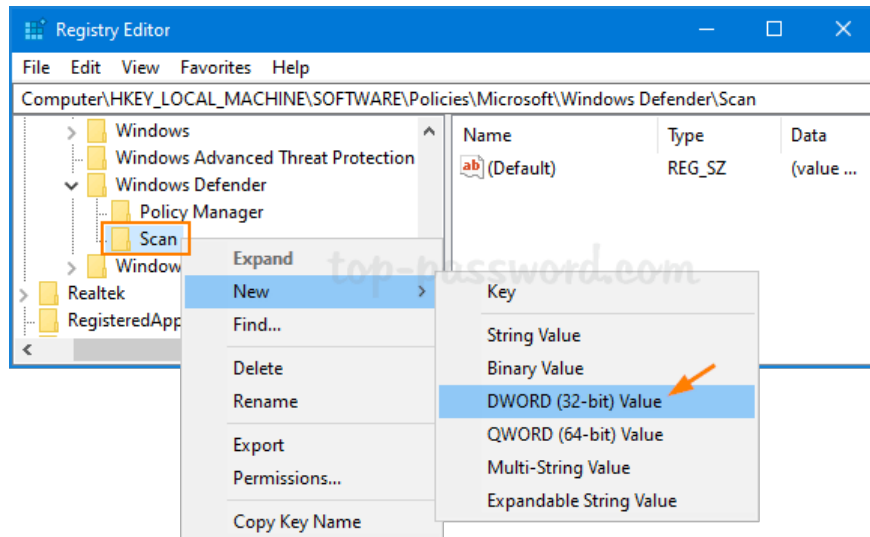
HKEY_LOCAL_MACHINE\SOFTWARE\Policies\Microsoft\Windows Defender

Right-click on the **Windows Defender** key and select **New > Key** . Name it **Scan**.



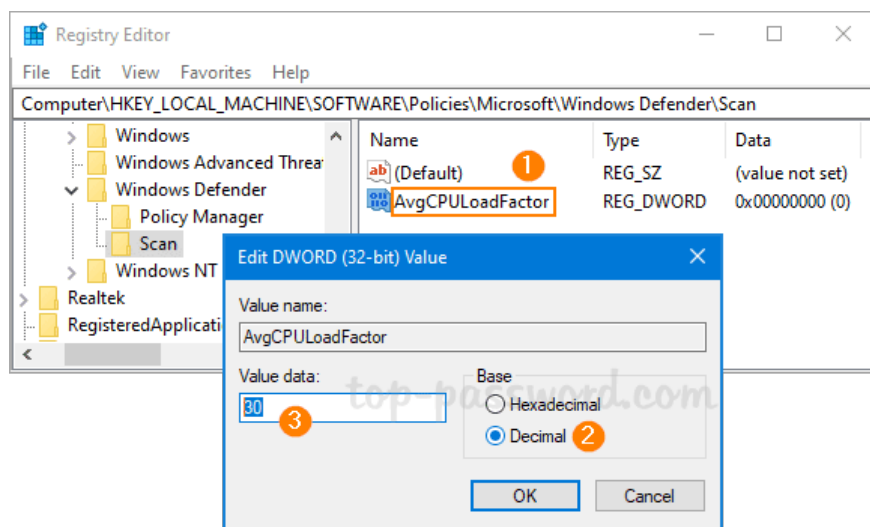
Create a new key and name it Scan

2. Next, right-click the newly created **Scan** sub-key and select **New> DWORD (32-bit) Value** .



Select New> DWORD (32-bit) Value

3. Name DWORD **AvgCPULoadFactor**, then double-click it to specify the maximum CPU percentage for Windows Defender.



Name DWORD as AvgCPULoadFactor

4. Close Registry Editor. Restart the computer and check if Windows Defender is still using the CPU at a high level.

You finished reading the article "**3 ways to limit Windows Defender CPU usage in Windows 10**" edited by the [TipsMake](#) team. We hope this article has provided you with many useful tech tips and tricks. You can search for similar articles on tips and guides. Thank you for reading and for following us regularly.