

3 ways to hide recovery partition (Recovery) on Windows 10 / 8.1 / 7

On most computers, manufacturers have built a recovery partition (Recovery) so that users can restore Windows to a new production state. By default, this partition is hidden or does not appear in File Explorer (Windows Explorer). When opening Disk Management, you can clearly see this partition.

On most computers, manufacturers have built a recovery partition (Recovery) so that users can restore Windows to a new production state. By default, this partition is hidden or does not appear in File Explorer (Windows Explorer). When opening Disk Management, you can clearly see this partition.

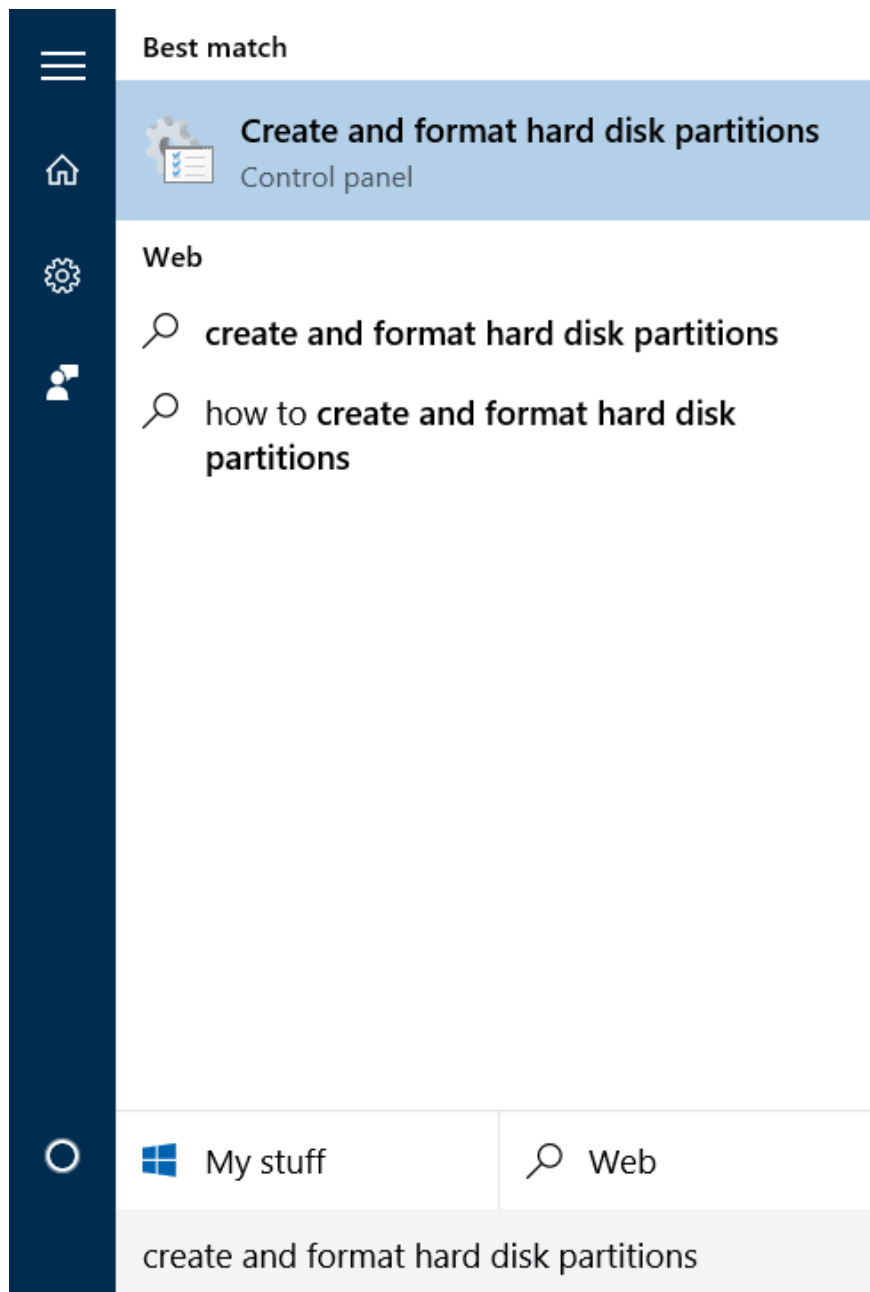
Recovery partition contains a lot of important data to restore Windows operating system, so you should hide it to prevent you from accidentally deleting the files in it or seriously rather than the whole partition.

Here are 3 ways to hide Windows 10 / 8.1 / 7 Recovery partition that Network Administrator wants to introduce to you.

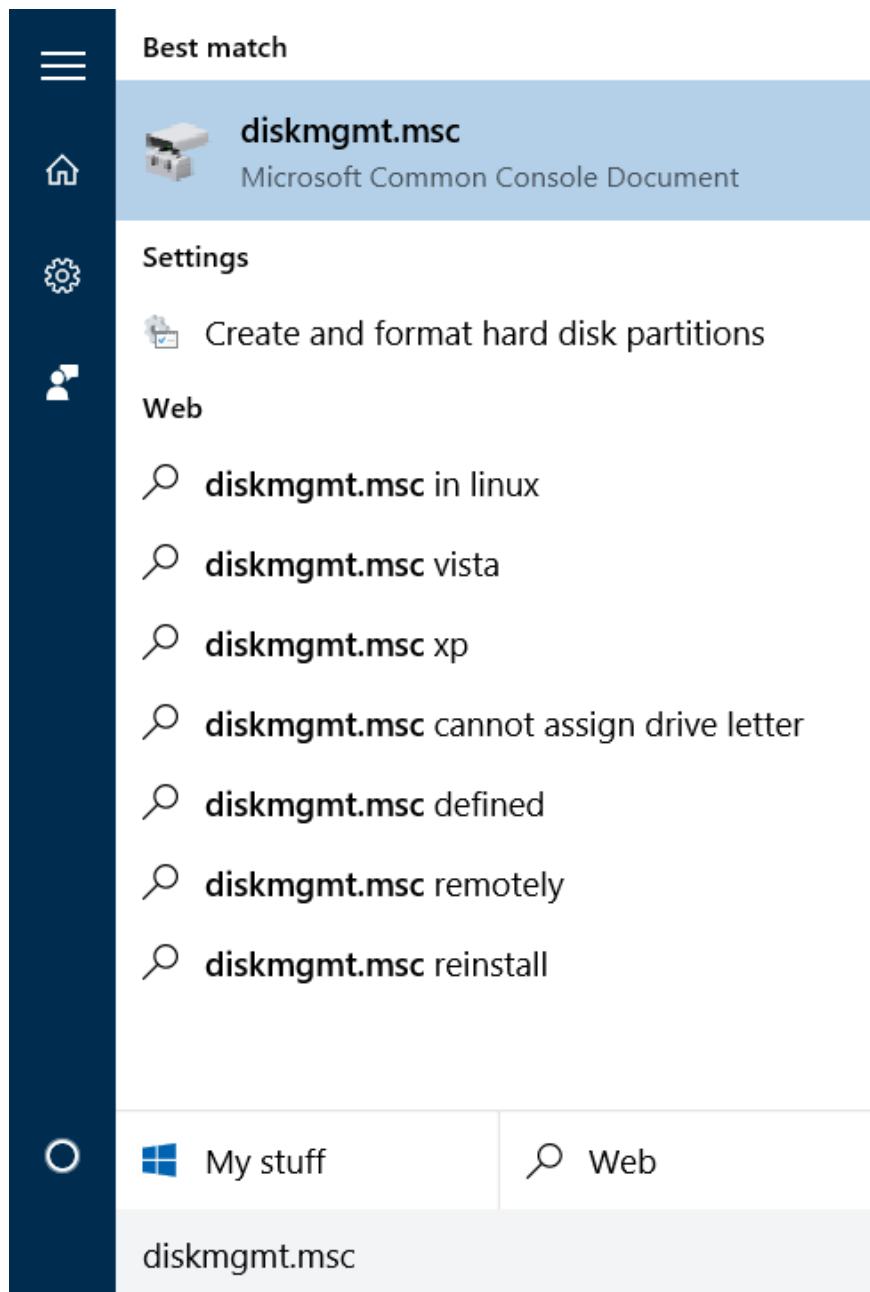
1. Use Disk Management

Step 1: Open Disk Management

To open Disk Management, enter **create and format hard disk partitions** into the Search box on the Start Menu and press **Enter** .

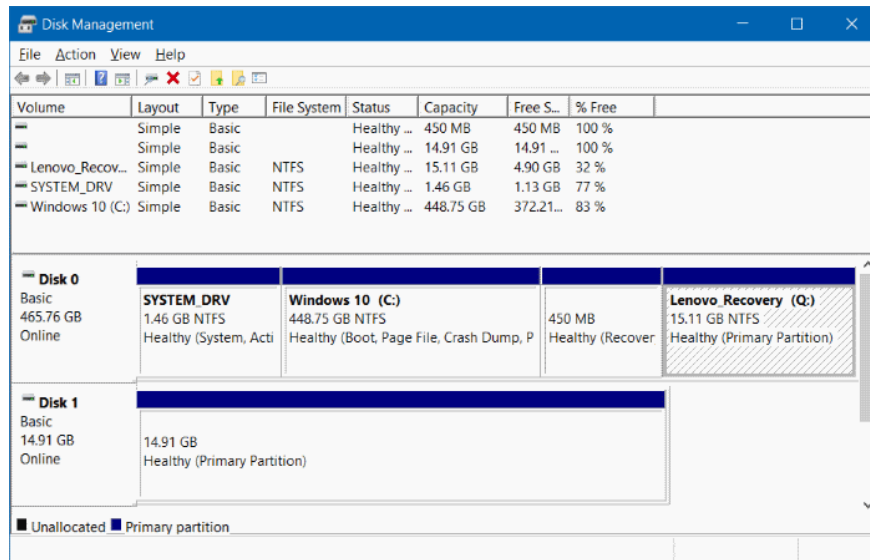


Alternatively, you can enter **Diskmgmt.msc** in Search box on Start Menu or Run command window and press **Enter** .



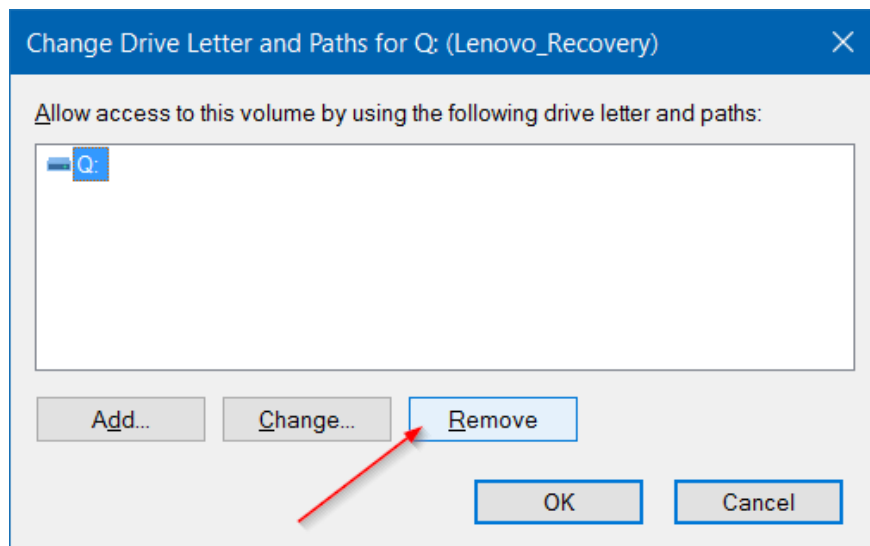
Step 2:

In the Disk Management window, right-click the Recovery partition you want to hide and select **Change Partition Letter and Paths**.

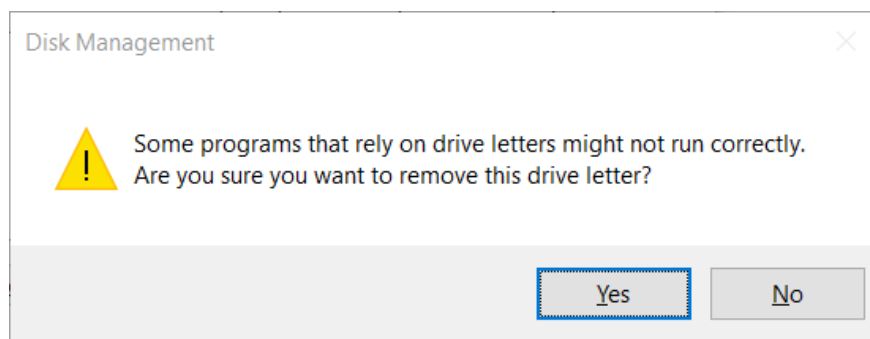


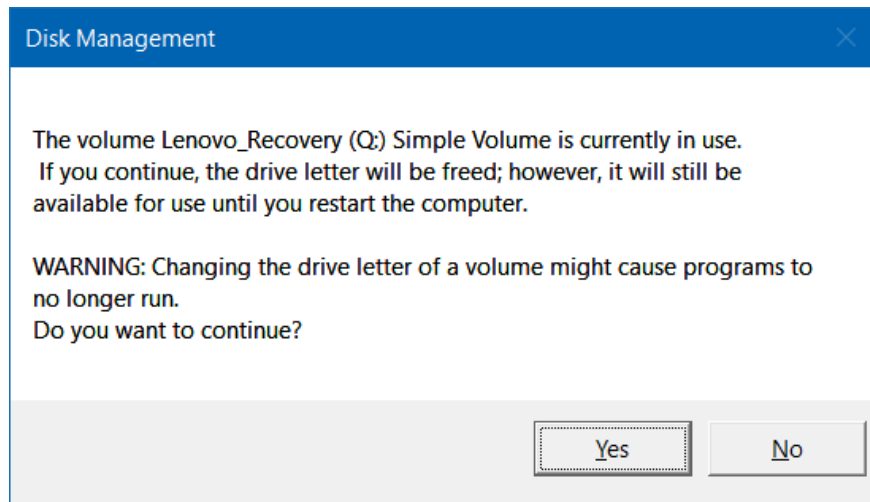
Step 3:

Now, the **Change Partition Letter and Paths** dialog box appears, and select **Remove**.



Then select **Yes** when the dialog box 'Some programs that depend on the letter partition can not run correctly. B?n có ch?c mu?n g? b? th? m?c th? này?' appear.





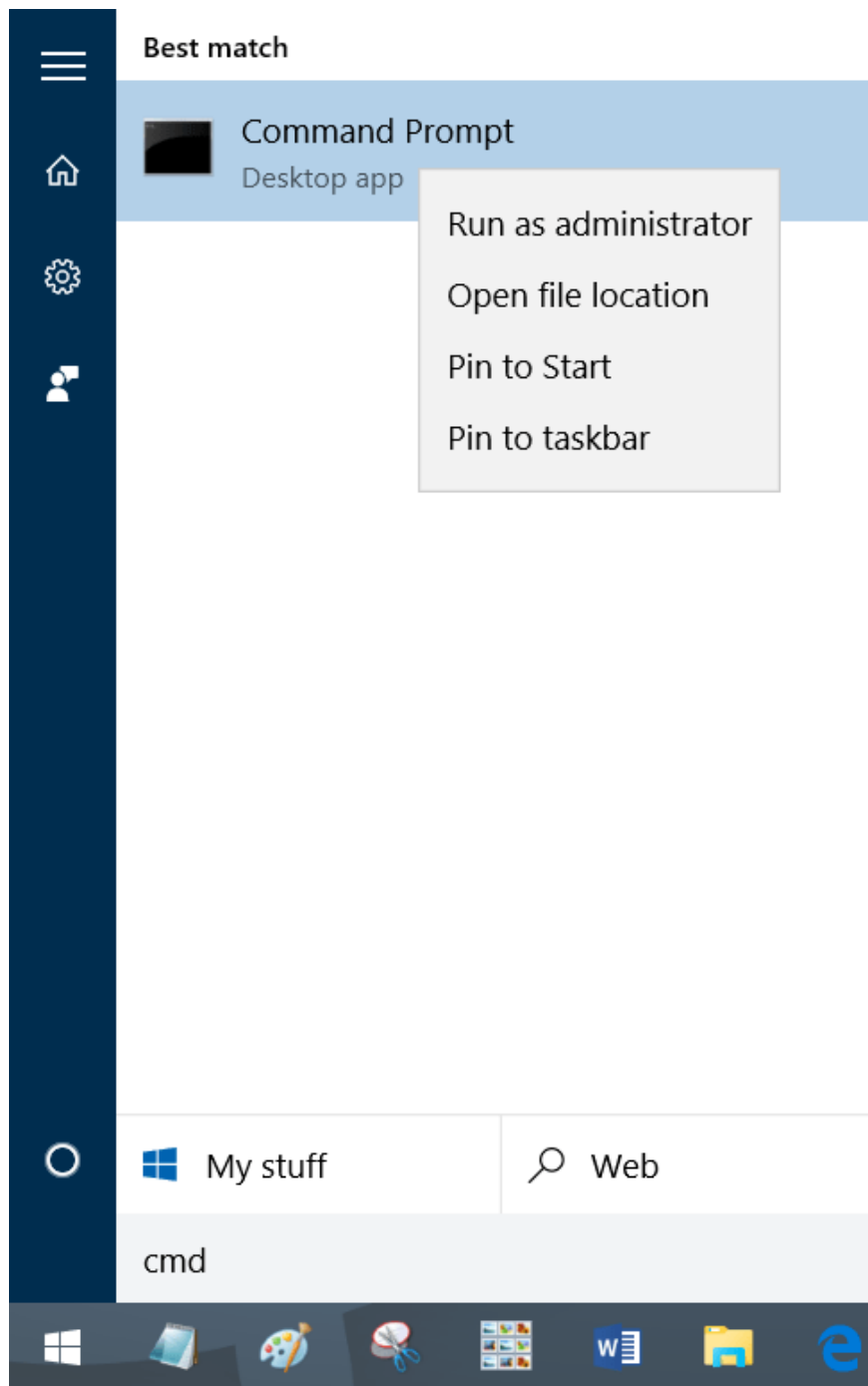
So you are done hiding the recovery partition (Recovery).

If you want to display the recovery partition (Recovery) on File Explorer, open Disk Management, then right-click on the recovery **partition** select **Change Partition Letter and Paths** , click on **Add** and then select the partition identifier.

2. Use Command Prompt

Step 1: Open Command Propmt under Admin

To open the Command Prompt under Admin, enter **CMD** into the Search box on the Start Menu, then right-click the Command Prompt and select **Run As Administrator** .



Step 2:

On the Command Prompt window, enter each of the commands below and press Enter to see all the partitions:

Diskpart

Volume list

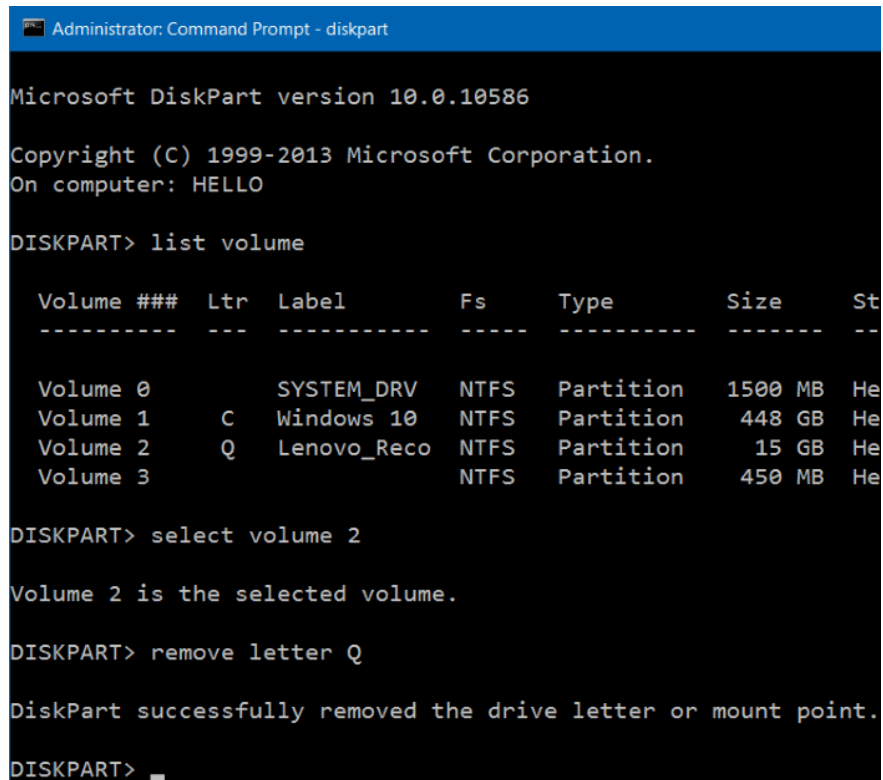
Step 3:

Next select the partition you want to hide.

To select a partition, use the following command:

Ch?n kích c? X

Where X is the number of partitions you find in the previous step.



```
Administrator: Command Prompt - diskpart
Microsoft DiskPart version 10.0.10586
Copyright (C) 1999-2013 Microsoft Corporation.
On computer: HELLO

DISKPART> list volume

Volume ###  Ltr  Label          Fs   Type   Size  St
-----  ---  -
Volume 0             SYSTEM_DRV  NTFS  Partition  1500 MB  He
Volume 1      C   Windows 10  NTFS  Partition  448 GB  He
Volume 2      Q   Lenovo_Reco NTFS  Partition   15 GB  He
Volume 3             NTFS  Partition   450 MB  He

DISKPART> select volume 2

Volume 2 is the selected volume.

DISKPART> remove letter Q

DiskPart successfully removed the drive letter or mount point.

DISKPART> 
```

Step 4:

Finally enter the following command into the Command Prompt window to delete the partition identifier (delete the hidden partition identifier automatically on File Explorer).

Remove letter X

Where X is the drive letter of the partition.

To add characters and display partitions on File Explorer, follow the steps below:

Step 1:

Perform step 1,2,3 as above.

Step 2:

Enter the following command to select the partition:

Select volume X (X is the volume number)

Step 3:

To access the selected partition identifier, use the following command:

Assign letter X (X is the character that identifies the drive you want to access).

```
Administrator: Command Prompt - diskpart
C:\WINDOWS\system32>diskpart

Microsoft DiskPart version 10.0.10586

Copyright (C) 1999-2013 Microsoft Corporation.
On computer: HELLO

DISKPART> list volume

   Volume ###  Ltr  Label           Fs          Type        Size
   -----  ---  -----
   Volume 0                                NTFS        Partition  1500
   Volume 1     C   Windows 10     NTFS        Partition   448
   Volume 2                                NTFS        Partition    15
   Volume 3                                NTFS        Partition   450

DISKPART> select volume 2

Volume 2 is the selected volume.

DISKPART> assign letter Q

DiskPart successfully assigned the drive letter or mount
```

3. Using the 3rd software



Windows Drive Hider is a free utility for Windows. The main feature of the utility is to hide any partition in the drive that the user desires. Using is quite simple, just download this tool, unzip.

Start Windows Drive Hider then select the partition you want to hide and then select **Hide Partition** .

You can refer to more:

1. **Collapse the system partition in Windows 7**
2. **Create partition during Windows 7 installation process**
3. **Create Linux installation partition on USB or SD memory card**

Good luck!

You finished reading the article "**3 ways to hide recovery partition (Recovery) on Windows 10 / 8.1 / 7**" edited by the [TipsMake](#) team. We hope this article has provided you with many useful tech tips and tricks. You can search for similar articles on tips and guides. Thank you for reading and for following us regularly.