

3 ways to fix the error of not receiving USB USB after installing Windows

The article introduces 3 ways to fix the error of the computer not recognizing the usb after installing Win is extremely simple. If you get this error, please click to see details!

USB is a tool to support storage and sharing of data effectively for computer users, laptops . However, sometimes the computer device and the USB will not be compatible due to certain errors, including the case when the computer does not recognize the USB after installing a new Windows . Here are ways to fix this.

1. Try plugging in USB on multiple ports

With the error that the computer does not recognize the USB after installing Windows, it may not be due to the software, but because you accidentally plugged the USB into the faulty or broken connection port only. So try the easiest way is to attach it to other USB ports on the computer . If the port is different from the computer receiving the USB, the error is in the original connection port. Also in the case if the USB port does not recognize while you plug in the mouse and the keyboard is still normal, there is a high possibility that the USB is having problems.



2. Clean the USB slot and reinforce the connector cable

If the USB cannot be recognized on any other device, chances are your USB has a hardware failure - usually the chip inside. Another common reason is that the USB slot on the computer is being covered with dust. This prevents it from connecting to your USB drive when plugged in.



However, if the problem is only on your computer then use a soft brush to wipe dust inside the USB slot and fix the USB cable connected from the USB port to the board on the computer.

3. Check the USB port in the BIOS

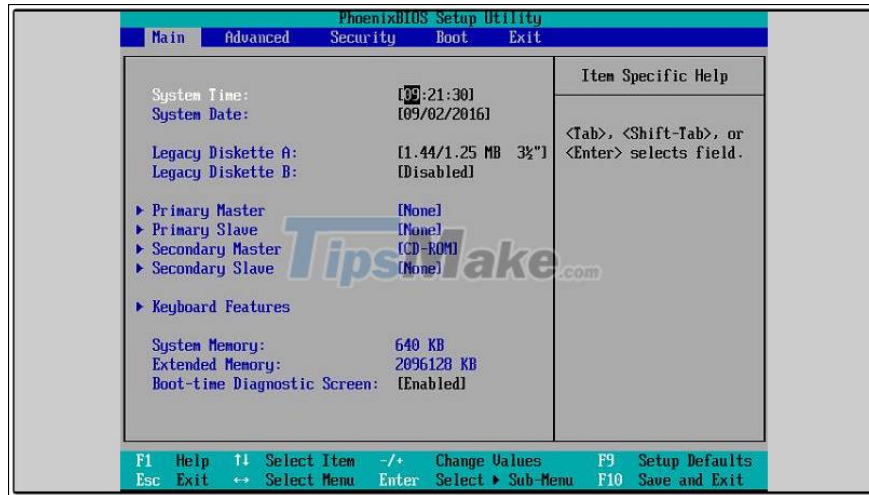
If you have tried the two above methods, but the computer does not recognize the USB after Windows installation is still continuing, please check if the USB ports are opened to support in the BIOS or not.

Step 1 : Plug the **USB** into the connection port on the computer.



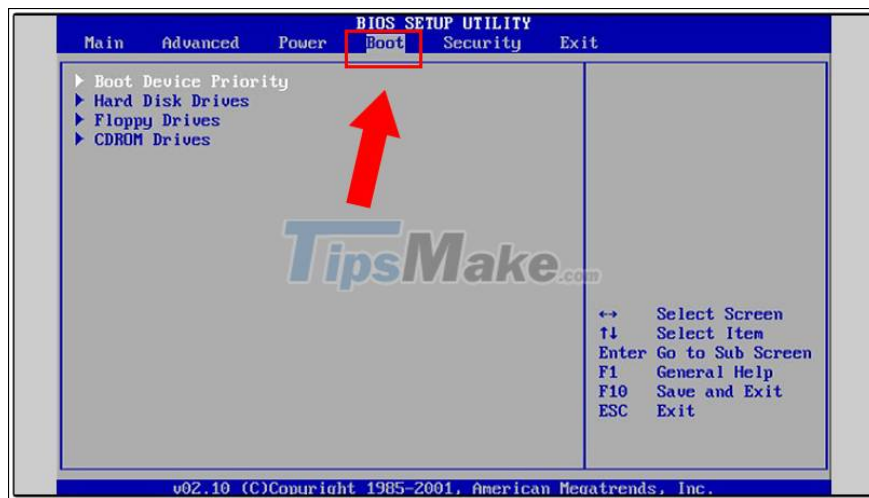
Step 2 : You enter the **BIOS** , depending on the computer model, there will be different ways to log in. Here are the BIOS entry instructions for some models:

1. **Laptop HP - COMPAQ:** For some HP models, you must press Esc - the Escape button to enter the BIOS. To get into the BIOS when the computer reboots, press and hold the F10 key.
2. **Acer Laptop:** To enter the BIOS when the computer reboots, press and hold the F2 key.
3. **Asus Laptop:** To enter the BIOS when the computer reboots, press and hold the ESC key.
4. **Lenovo Thinkpad Laptop:** To get into BIOS when restarting the computer, press and hold F1.
5. **Dell Laptop:** To enter the BIOS when the computer reboots, press and hold the F2 key.

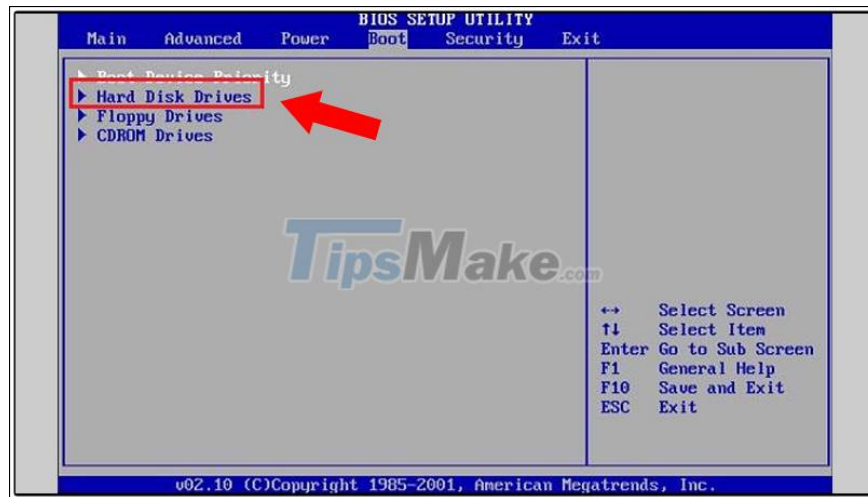


Step 3 : When a new window appears, in the **Main** section, if you do not see the USB key, move to the **Boot** section .

Note : The navigation in the BIOS is entirely using the up, down, left, and right navigation keys, but you cannot use the mouse.



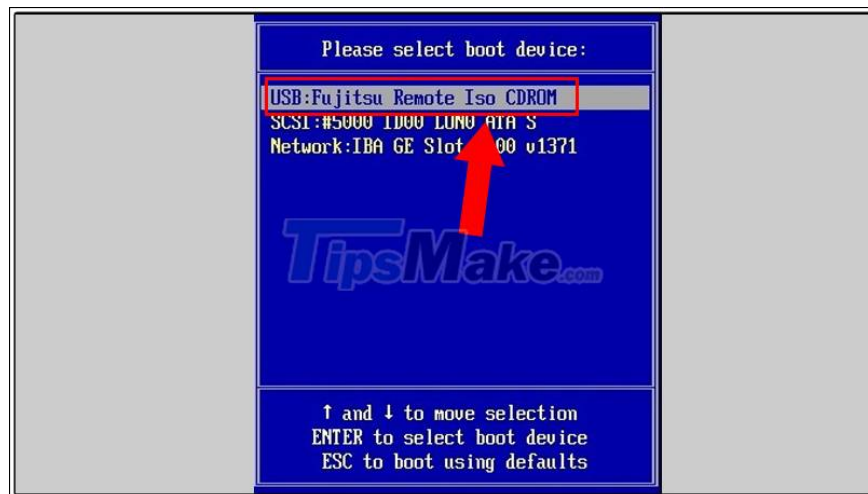
Step 4 : Select **Hard Disk Drives** , where it will display the name of the USB that you plugged into the computer (as for example, HP v165w).



Step 5 : Exit Hard Disk Drives, select **Security** and then save it by clicking **OK** . Wait a moment your computer will be restarted.

Step 6 : When the screen displays the **Boot Menu** , press **the F8 key** .

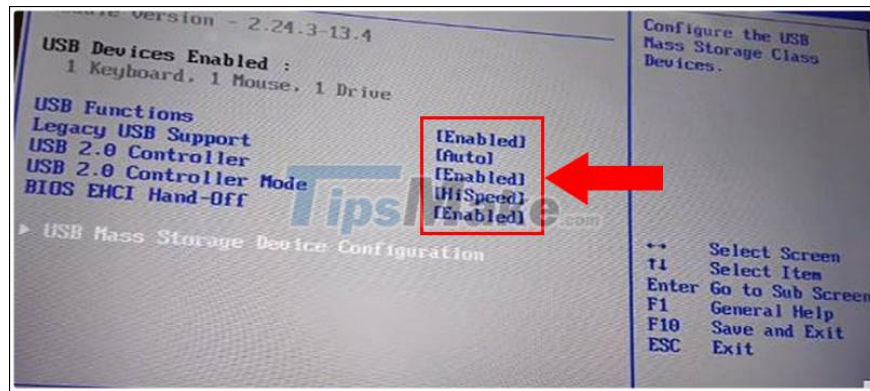
Step 7 : Next, a new window will appear, select the USB line and press **Enter** .



Step 8 : Unplug and try to plug the **USB** back in when the screen shows the Windows installer. If still does not recognize, you must change the port or restart the computer.

Step 9 : Re-enter the BIOS by pressing **the F8 key** , next in turn, search and click on the line containing the word USB.

Step 10 : Check the USB's Enabled. If **Enabled** your USB is already supported in BIOS.



Step 11 : On the window displaying the **USB Mass Storage Device Configuration line** , click to select. If the USB name is displayed, the computer has already recognized it.

Finally, **restart** the computer and turn on the menu to select the USB line again.

Above are 3 ways to help you fix the error of the computer not receiving USB. Wish you a good day!

You finished reading the article "**3 ways to fix the error of not receiving USB USB after installing Windows**" edited by the [TipsMake](#) team. We hope this article has provided you with many useful tech tips and tricks. You can search for similar articles on tips and guides. Thank you for reading and for following us regularly.