

# 3 ways to disable USB Selective Suspend in Windows 11

Windows' USB Selective Suspend feature puts USB devices in a low-power state when not in use. While this can improve battery life, it can cause problems with peripherals that need uninterruptible power.

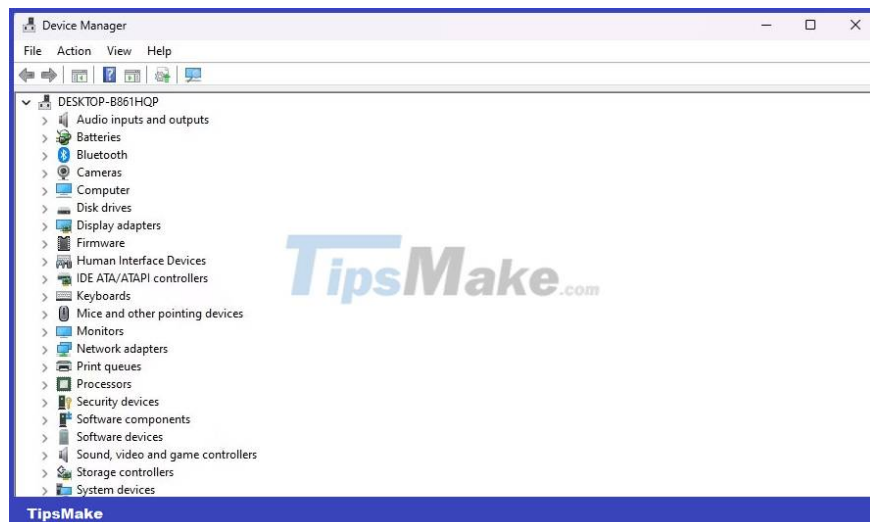
If you're having issues with USB devices on your Windows 11 computer, consider disabling USB Selective Suspend. Here's how to do this on Windows 11.

## 1. Using Device Manager

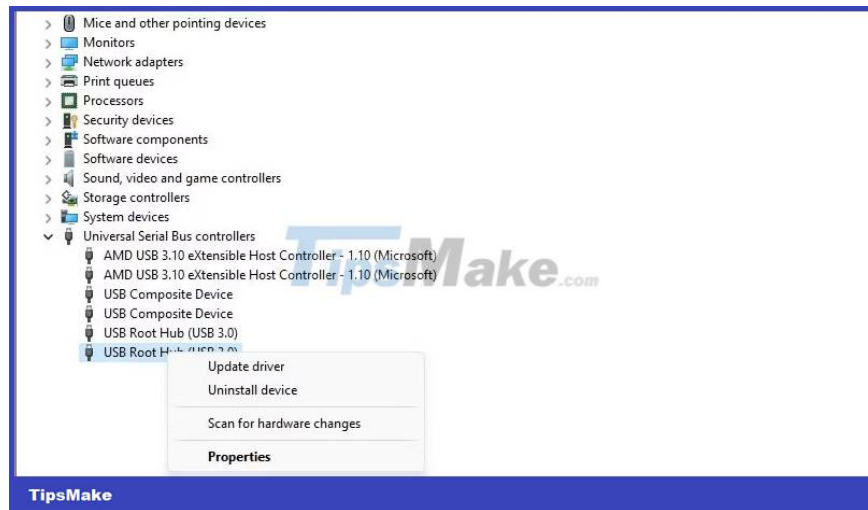
Device Manager on Windows is the perfect place to manage USB devices connected to your system. You can use it to update outdated drivers, uninstall devices, etc. It can also help you disable USB Selective Suspend feature.

Follow these steps to disable USB Selective Suspend through Device Manager:

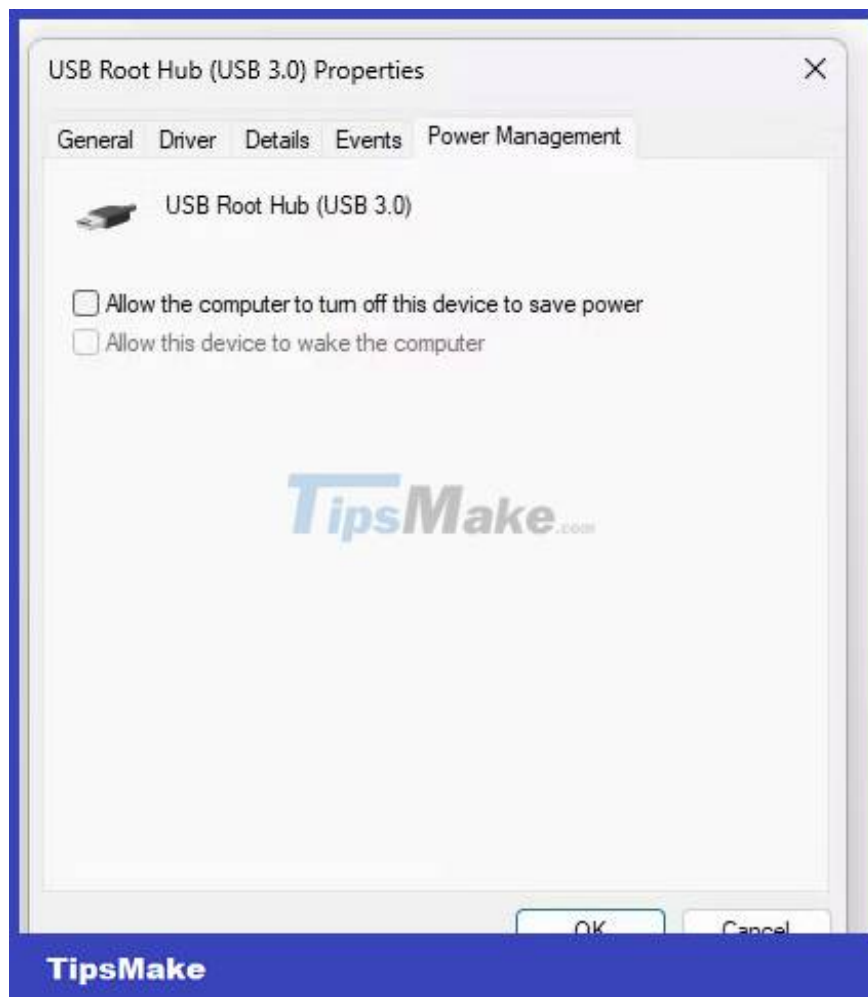
1. Press Win + X and select Device Manager from the context menu.
2. Double-click the Universal Serial Bus controllers node .



3. Right click on any Generic USB Hub or USB Root Hub driver and select Properties .



4. Switch to the Power Management tab and uncheck the option Allow the computer to turn off this device to save power . Then, click OK to save the changes.



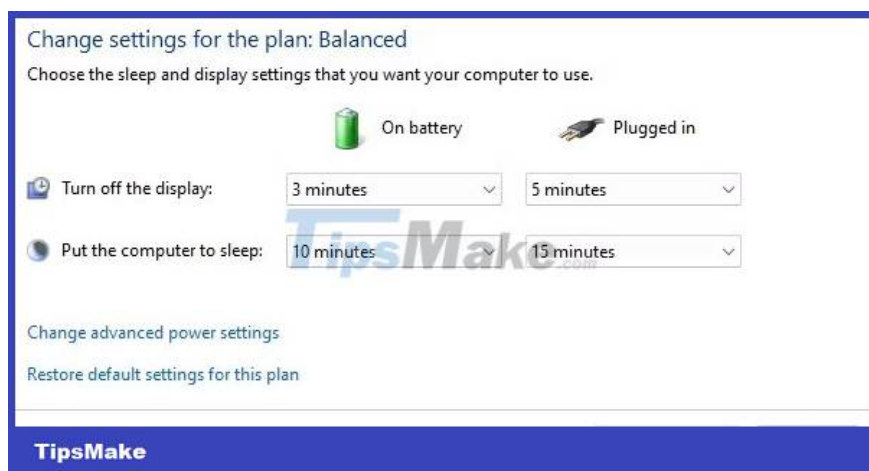
Now, repeat the above steps for all the USB drivers for which you want to disable USB Selective Suspend.

## 2. Using the Control Panel

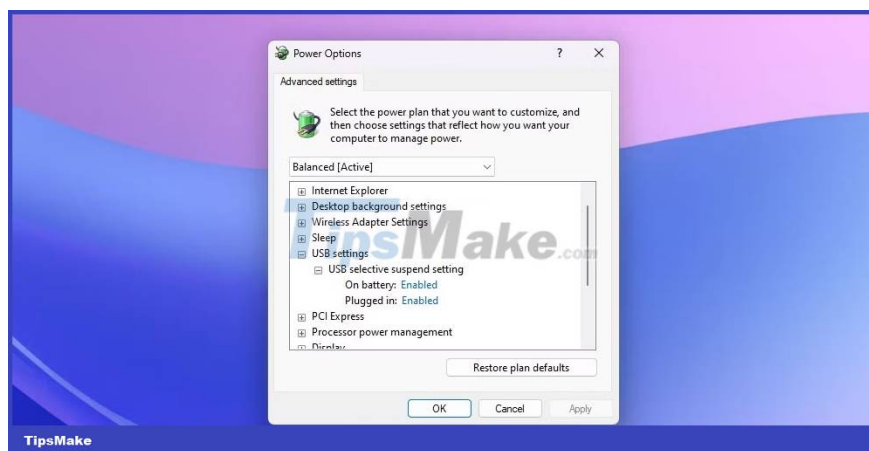
The Control Panel serves as the central hub of the Windows operating system, allowing users to perform a variety of tasks. From simple tasks like changing the desktop wallpaper to more complex operations like managing user accounts, you can do it by accessing the Control Panel.

Follow these steps to disable USB Selective Suspend via Control Panel:

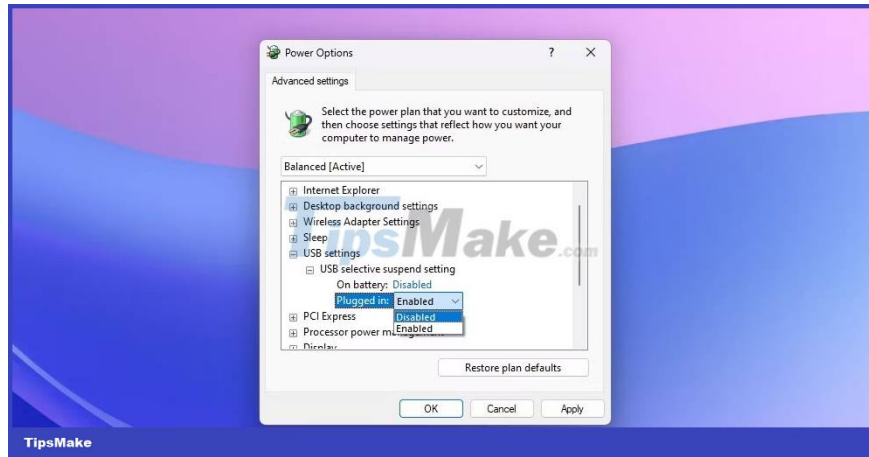
1. Press the Win key to open the Start menu, type Control Panel in the search bar and press Enter.
2. Navigate to System and Security > Power Options > Change plan settings .
3. Click the Change advanced power settings option .



4. Double-click the USB settings option and then expand USB selective suspend setting .



5. Select Disabled for both the On battery and Plugged in options .



6. Click Apply > OK to save the changes.

The USB Selective Suspend feature is now disabled. Let's look at another way to do so.

### 3. Using Command Prompt

Follow these steps to disable USB Selective Suspend via Command Prompt:

1. Open the Start menu, type Command Prompt in the search bar and select Run as administrator .
2. Type the following command into the Command Prompt window with admin rights and press Enter.

```
powercfg /SETACVALUEINDEX SCHEME_CURRENT 2a737441-1930-4402-8d77-b2beba308a3 48e6b7a6-50f5-4782-a5d4-53bb8f07a226 0
```



Everything is done! The USB Selective Suspend feature is now disabled on your Windows computer. If desired, you can easily turn it back on using the same navigation as shown above.

You finished reading the article "**3 ways to disable USB Selective Suspend in Windows 11**" edited by the [TipsMake](#) team. We hope this article has provided you with many useful tech tips and tricks. You can search for similar articles on tips and guides. Thank you for reading and for following us regularly.