

# 3 Ways to Check the Operating Status of Your Hard Drive Most Accurately

The hard drive is a crucial component for storing data on a computer. Over time, hard drives can experience problems such as bad sectors, slow speeds, or even complete failure. To avoid sudden data loss, you should check its condition regularly.

Checking your hard drive helps detect errors early, protect data, and extend the lifespan of your device. You can use software, CMD commands, or perform a direct check on Windows to diagnose the condition of your HDD/SSD.

**Table of Contents:** 1. Using CrystalDiskInfo. 2. Using CMD commands. 3. Checking files.

## *3 Ways to Check the Operating Status of Your Hard Drive*

### *1. Use specialized software.*

There are many software programs available online that help you check the health of your hard drive, such as Active Hard Disk Monitor, Ariolic Disk Scanner, Active SMART, etc. And CrystalDiskInfo is one of them.

CrystalDiskInfo 8.9.0 x64

File Edit Function Theme Disk Help Language

Caution  
46 °C  
C: E:

**WDC WD5000AAKX-221CA1 500.1 GB**

Health Status **Caution**

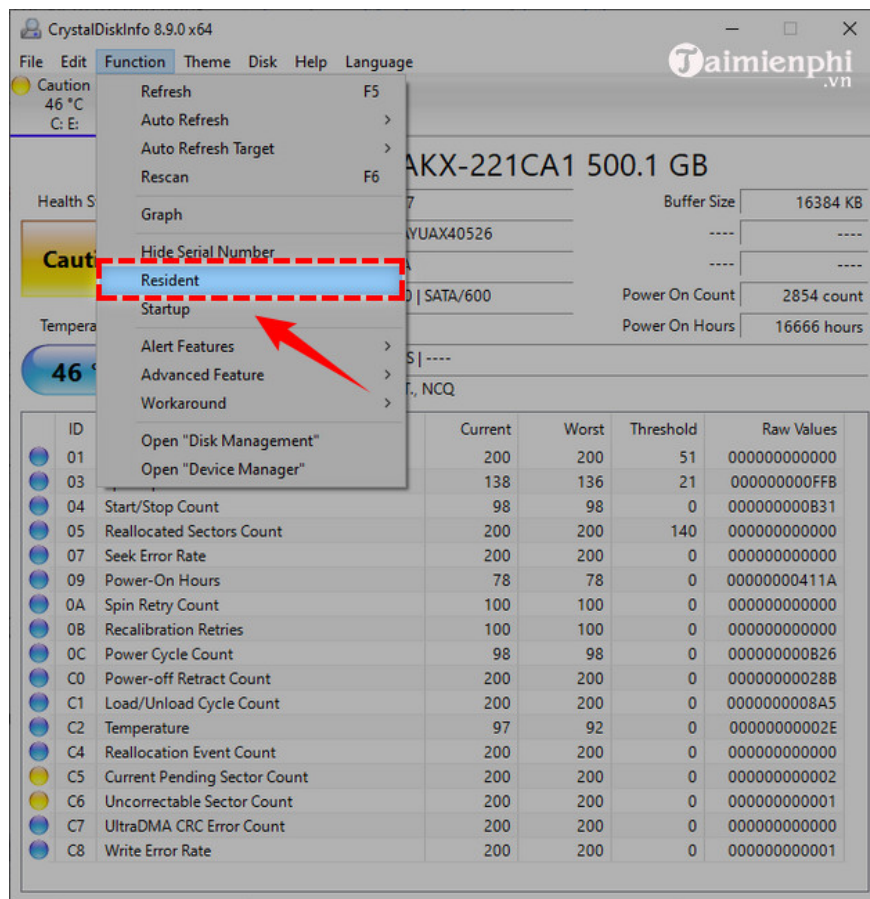
Temperature **46 °C**

Firmware: 17.01H17  
Serial Number: WD-WCAVUAX40526  
Interface: Serial ATA  
Transfer Mode: SATA/300 | SATA/600  
Drive Letter: C: E:  
Standard: ATA8-ACS | ----  
Features: S.M.A.R.T., NCQ

Buffer Size: 16384 KB  
Power On Count: 2854 count  
Power On Hours: 16666 hours

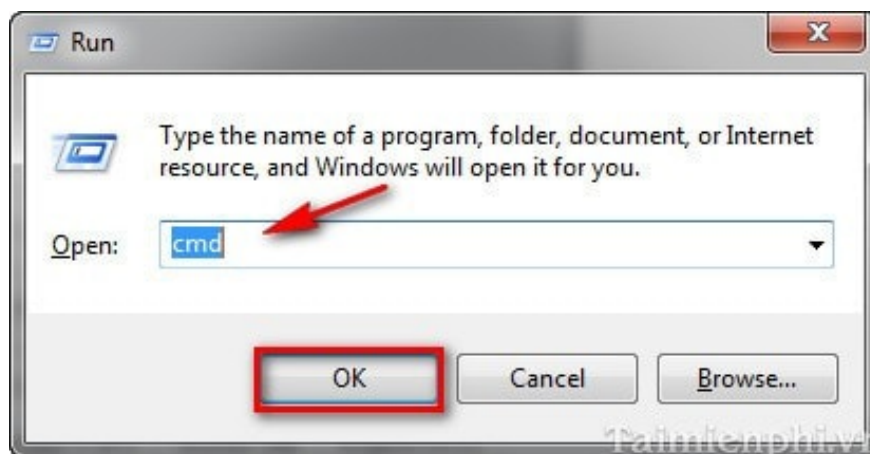
ID	Attribute Name	Current	Worst	Threshold	Raw Values
01	Read Error Rate	200	200	51	000000000000
03	Spin-Up Time	138	136	21	00000000FFB
04	Start/Stop Count	98	98	0	00000000B31
05	Reallocated Sectors Count	200	200	140	000000000000
07	Seek Error Rate	200	200	0	000000000000
09	Power-On Hours	78	78	0	0000000411A
0A	Spin Retry Count	100	100	0	000000000000
0B	Recalibration Retries	100	100	0	000000000000
0C	Power Cycle Count	98	98	0	00000000826
C0	Power-off Retract Count	200	200	0	0000000028B
C1	Load/Unload Cycle Count	200	200	0	000000008A5
C2	Temperature	97	92	0	0000000002E
C4	Reallocation Event Count	200	200	0	000000000000
C5	Current Pending Sector Count	200	200	0	000000000002
C6	Uncorrectable Sector Count	200	200	0	000000000001
C7	UltraDMA CRC Error Count	200	200	0	000000000000
C8	Write Error Rate	200	200	0	000000000001

To keep the software running in the background, go to **Function** -> **Resident**, and to start Windows, go to **Function** -> **Startup**. Both processes will appear and immediately alert you if the hard drive encounters any problems.

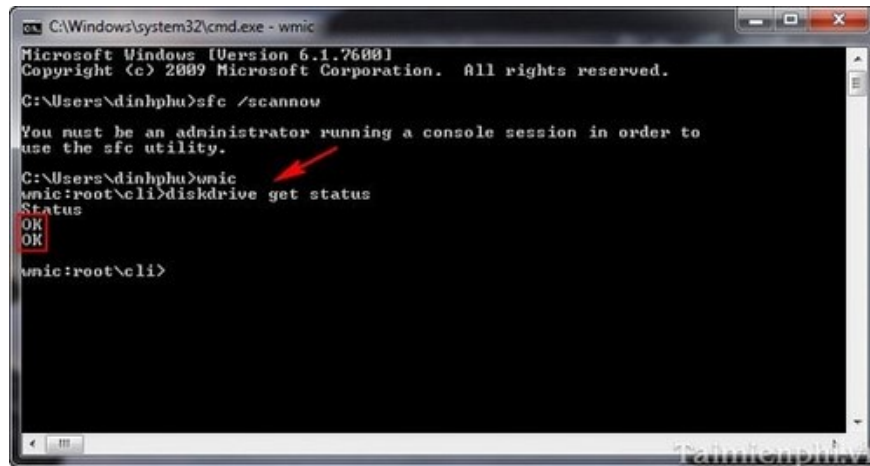


## 2. Use CMD commands.

First, you need to open the **Command Prompt** window by going to **Run** , typing **CMD** , and pressing Enter.



**In the Command Prompt** window , type the command `wmic`` and press Enter. Then type the command `diskdrive get status`` and press Enter.



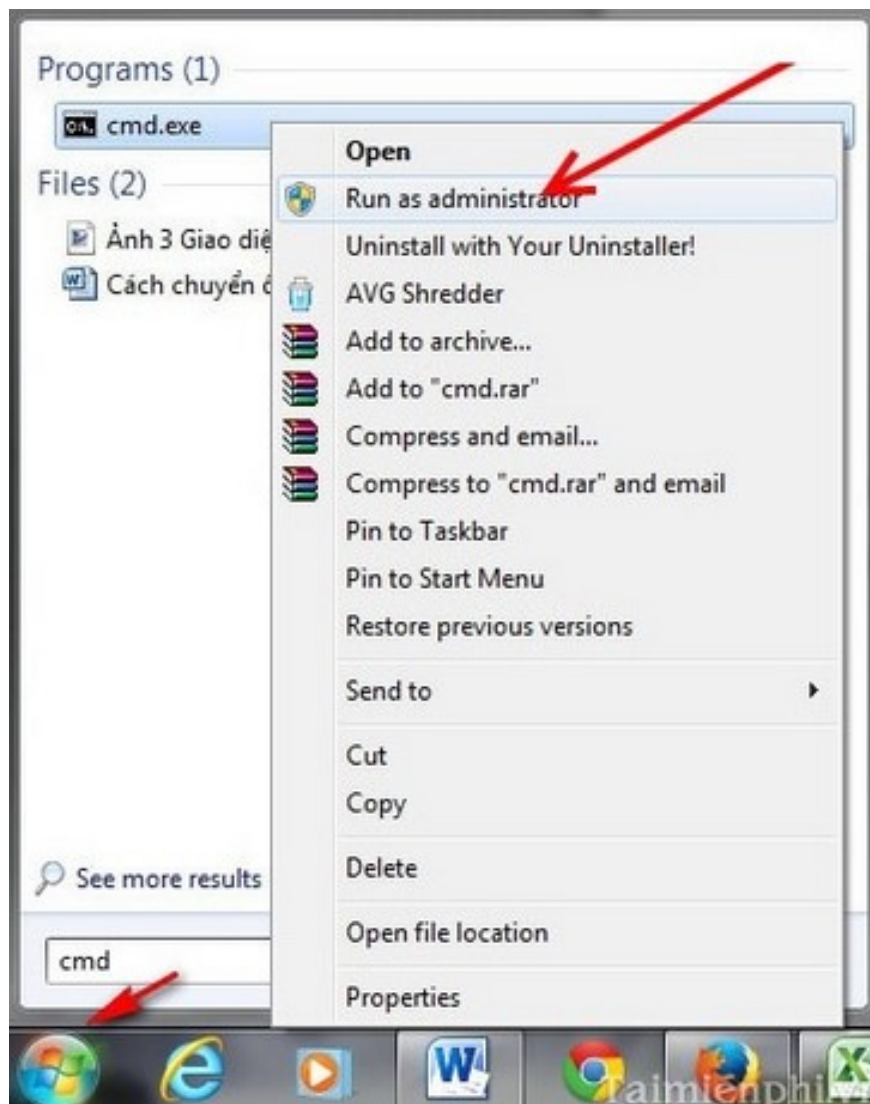
```
C:\Windows\system32\cmd.exe - wmic
Microsoft Windows [Version 6.1.7600]
Copyright (c) 2009 Microsoft Corporation. All rights reserved.

C:\Users\dinhphu>sfc /scannow
You must be an administrator running a console session in order to
use the sfc utility.
C:\Users\dinhphu>wmic
wmic:root\cli>diskdrive get status
Status
OK
OK
wmic:root\cli>
```

If your hard drive is working properly, you'll see the word "OK" displayed. If it's not, you should consider getting it repaired.

### ***3. Check the files to determine the quality of your hard drive.***

- Go to **Start** , type **cmd** --> right-click and select **Run as Administrator**



- In the Command Prompt window , type the command `sfc /scannow` --> Press Enter to execute the command.



After the system scan is complete, it will show you the status of all files on the system in detail. From this, you will know the storage status of your system.

Checking your hard drive's operating condition helps detect errors early that could lead to data loss and affect computer performance. If you notice any unusual signs such as slow access speeds, read/write errors, or high temperatures, consider using hard drive health check software for a detailed assessment. Additionally, you should back up important data and perform regular checks to ensure your hard drive is always functioning properly.

You finished reading the article "**3 Ways to Check the Operating Status of Your Hard Drive Most Accurately**" edited by the [TipsMake](#) team. We hope this article has provided you with many useful tech tips and tricks. You can search for similar articles on tips and guides. Thank you for reading and for following us regularly.