

3 ways to change IP address in Windows 10

Have you ever wondered how to change IP address in Windows 10? Want to learn how to do that from the Settings app or Windows 10 Control Panel?

Have you ever wondered how to change IP address in Windows 10? Want to learn how to do that from the Settings app or Windows 10 Control Panel? Maybe you're a fan of the command line and want to learn how to change IP address in Windows 10 using CMD (Command Prompt) or PowerShell? Read on and find out how all of this is done in Windows 10.

NOTE : To be able to change the IP address in Windows 10, you must log in to Windows 10 with an admin account. In addition, before learning how to change the IP address, it is best to know what the IP address and subnet mask are, how to find your computer's IP and the router's IP address.

Why change IP address?

Most people will rarely need to change their IP address. It's a normal part of computer setup, and websites require looking at IP addresses dozens (if not hundreds) of times a day.

Even so, there may be reasons to occasionally need to change your public or local IP address. The most common reasons include:

Protect security and privacy

Although abuse is rare, a public IP address allows others to find your general location. So, if you have a reason to stay anonymous, changing your IP address can make your computer look like a different one.

Regularly changing your external or public IP address can help you improve your overall security and privacy when browsing the web.

Change physical location

Your public IP address reveals your general geographic location, and changing your IP address can allow you to access geo-locked content, such as content from international streaming services. .

Avoid bans and blocks

If it knows your IP address, an entity could block you from accessing a particular website (this is sometimes called an "IP ban") or disable your access to the Internet using an attack. Denial of Service (DoS). Changing the IP is a good way to avoid this.

If you want to access a country's catalog of online media services when you are outside that country for any reason, changing your IP to an IP located in the appropriate country may help. you get the category you are looking for.

Likewise, if you are a gamer looking to reduce your latency, changing your IP through a gaming proxy server can help improve performance. A great tech trick for second language learners is to use an IP address in another country to generate search results and local publications written in the native language.

Troubleshoot

You may want to change your local IP address for technical troubleshooting purposes. For example, in rare cases, you may need to change your local IP address to avoid conflicts with other devices on your network.

If you just installed a new home router, you may need to reconfigure your network by changing your IP on the fly. A common problem among home routers is that they sometimes give devices the wrong IP address, so changing the IP manually can resolve such glitches.



Is changing IP address illegal?

No, changing your IP address is not illegal. People change their IP addresses frequently when faced with direct attacks on online security, when testing a website before it goes live, or when they just want to protect their privacy. .

But if you've changed your IP to impersonate an individual or a business - commonly known as IP spoofing - you're breaking the law. You can also get into trouble if you change your IP address to access a website that you are banned from. IP spoofing is also a tool used by some cybercriminals to carry out a number of high-profile attacks, most commonly those involving identity theft and denial of service attacks. The purpose is to cripple the website.

1. How to change IP address in Windows 10 using the Settings application

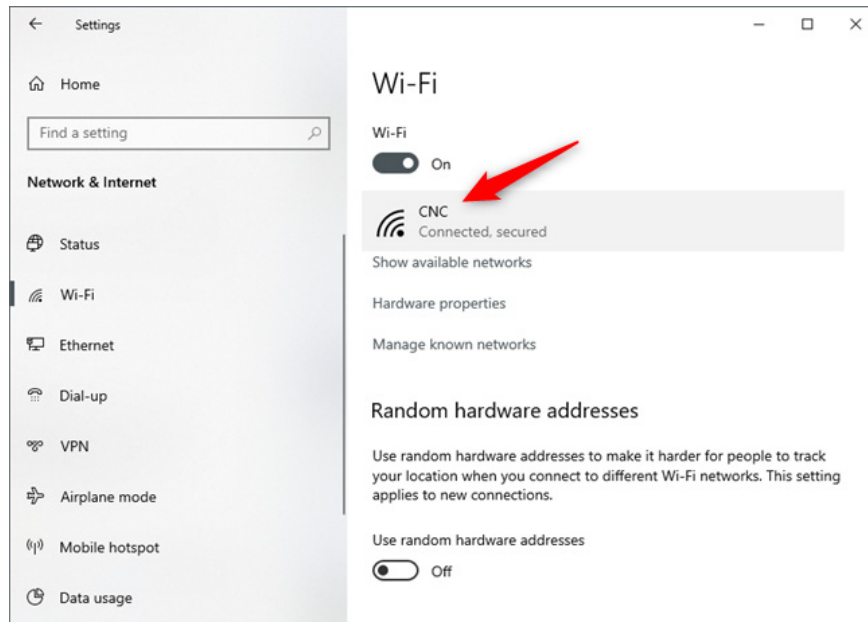
Because it relies on the operating system's intuitive interface, this is probably the easiest method to change the IP address of a Windows 10 computer or device. Here's what you need to do:

Step 1: Open the Settings application.

Step 2: In the Settings app , open the **Network & Internet** category .

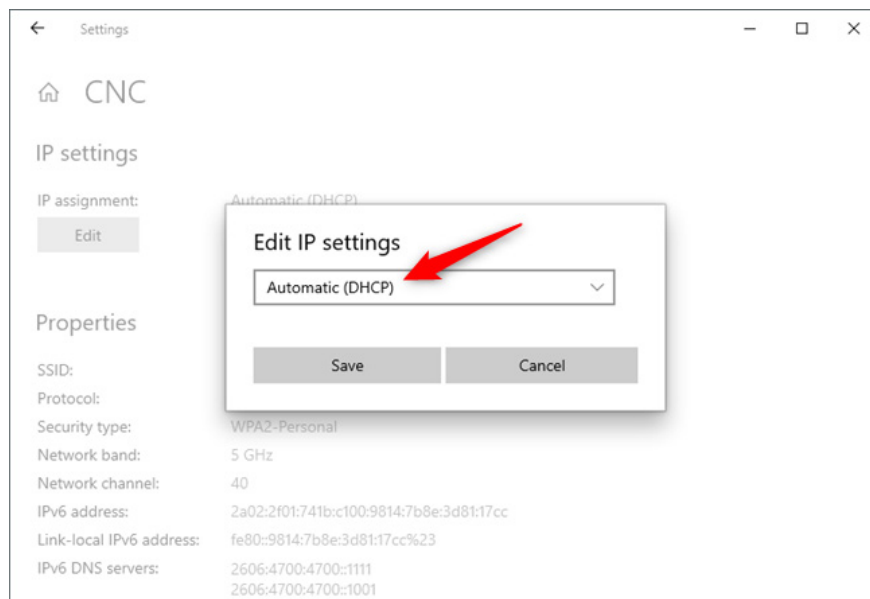
Step 3: On the left sidebar, select your network type. If you connect to the Internet (or local network) using a wireless card, select **WiFi**. If you are accessing the Internet (or LAN) using a wired connection, click **Ethernet**.

Step 4: On the right side of the window, click the network connection name.



Step 5: Scroll down on the network connection details page until you find the section called **IP settings**. Then, click **Edit** , under **IP assignment**.

Step 6: The Settings application now displays the **Edit IP settings** dialog box . This is where you can change the IP address of your computer or device. If you want the router to assign the IP address of your Windows 10 PC automatically, select **Automatic (DHCP)** . This is also known as dynamic IP address.



Step 7: If you want to set your own static IP address, select **Manual** and then turn on the **IPv4** and/or **IPv6** toggle switch , depending on the Internet protocol you want to use.

Note that each of these options has a separate IP address, so you must enter the required details for both IPv4 and IPv6 if you choose to enable both.

Step 8: To change the IP address to a static address, regardless of whether you set it for IPv4 or IPv6 protocol, you must enter the following details:

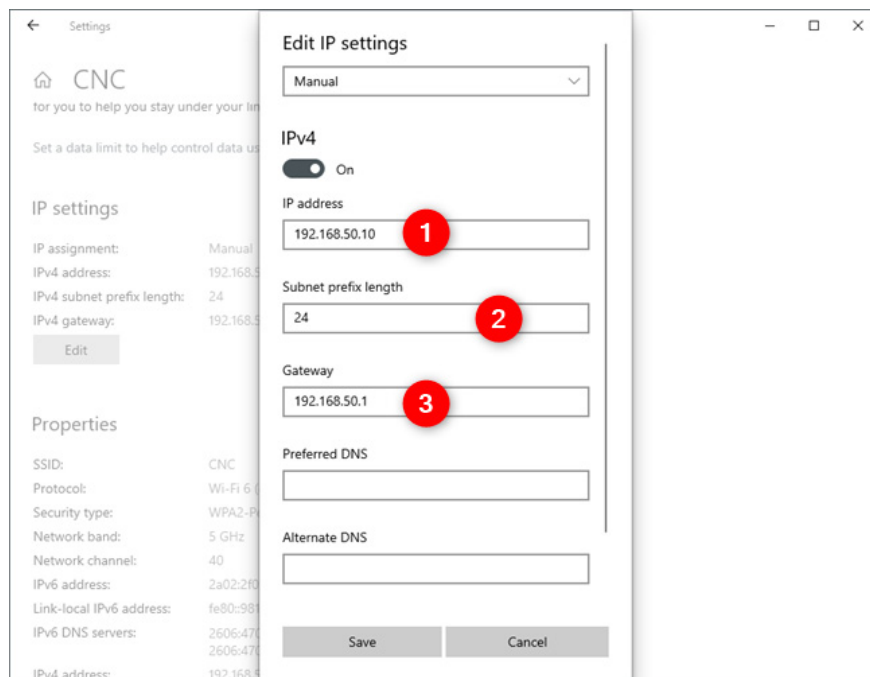
- **IP address** : Enter the static IP address you want to use. For example, you want to change the IP address (IPv4) of your Windows 10 PC to **192.168.50.10**.

- **Subnet prefix length** : Enter the prefix length that determines the size of the subnet. For example, the article has configured the router to use a subnet mask of **255.255.255.0** , which means entering "**Subnet prefix length**" is **24**. If the subnet mask is **255.255.0.0**, the prefix length will be **16**, etc.

- **Gateway**: Enter the router's IP address. In the case of the example, it is **192.168.50.1**.

- **Preferred DNS** and **Alternate DNS** settings are not required. If you leave them blank, they will be automatically assigned by the router. However, if you also want to change them, you can do so.

Once you have entered all the details, click **Save** to have the IP address changed by Windows 10.



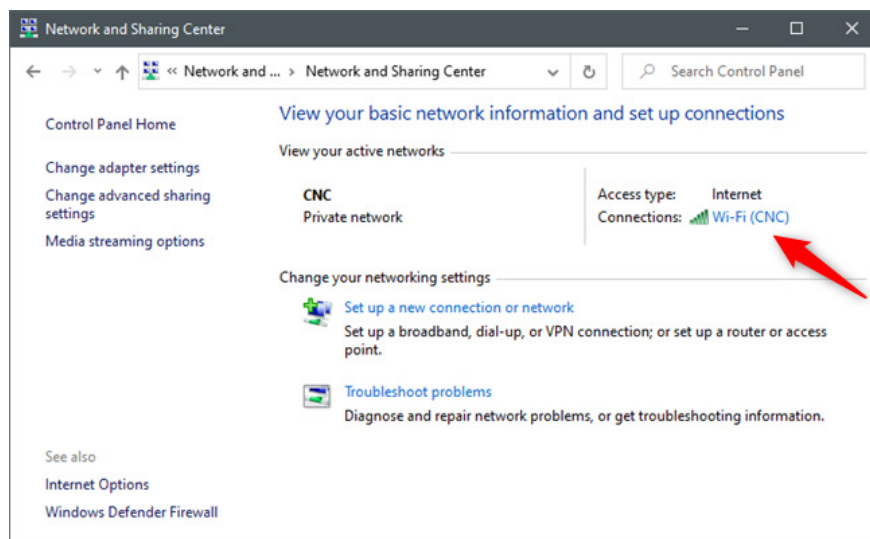
NOTE : If you choose to use a static IP address, make sure that all the details you enter are correct; otherwise, your Windows 10 PC will lose its Internet connection. If that happens, change your IP address back to **Automatic (DHCP)** so the router can change it to a working address.

2. How to change IP address in Windows 10 using Control Panel

In Windows 10, you can also change your IP address from Control Panel.

Step 1: Open Control Panel and click **View network status and tasks** under **Network and Internet** .

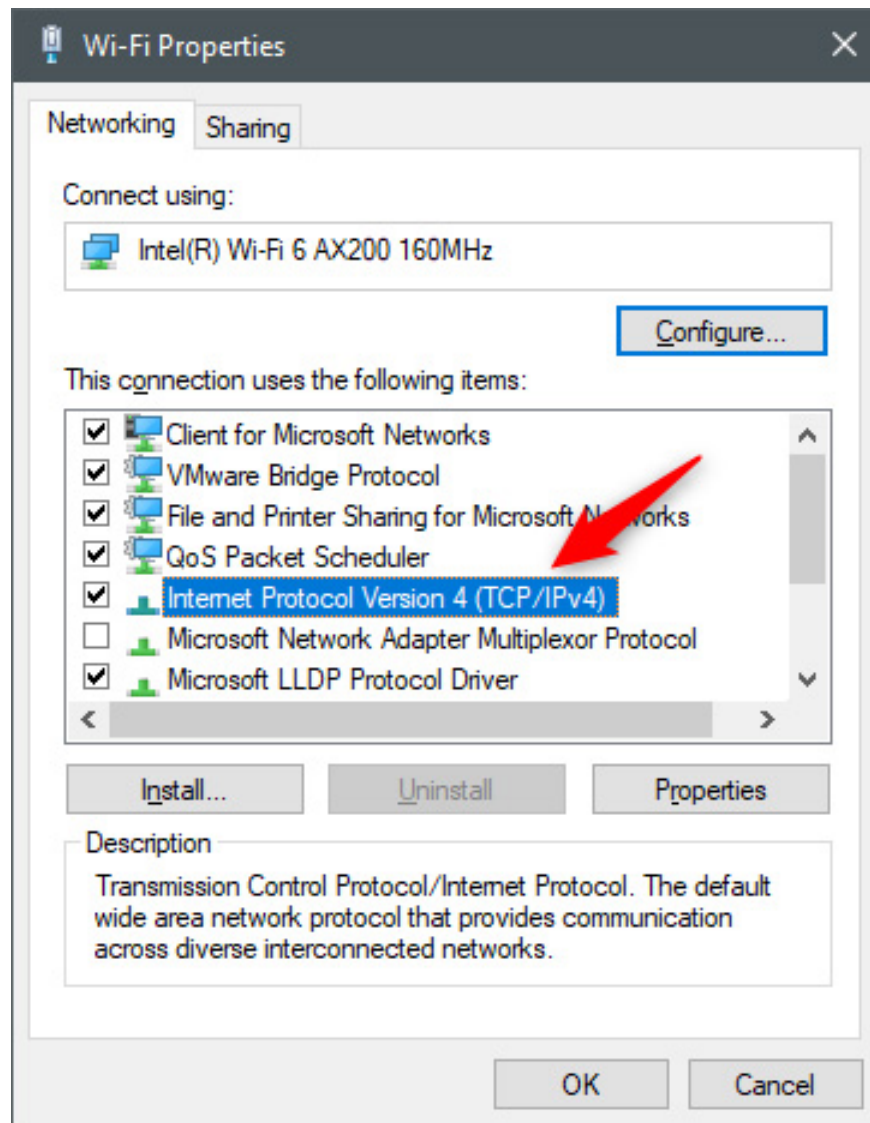
Step 2: In **Network and Sharing Center** , click on your Internet connection from the "**View your active networks**" area .



Step 3: In the Network Connection **Status** window , click **Properties**.

Step 4: In the **Properties** window, select **Internet Protocol Version 4 (TCP/IPv4)** or **Internet Protocol Version 6 (TCP/IPv6)**, depending on the IP address you want to change. If you want to change both, repeat the next steps for each option.

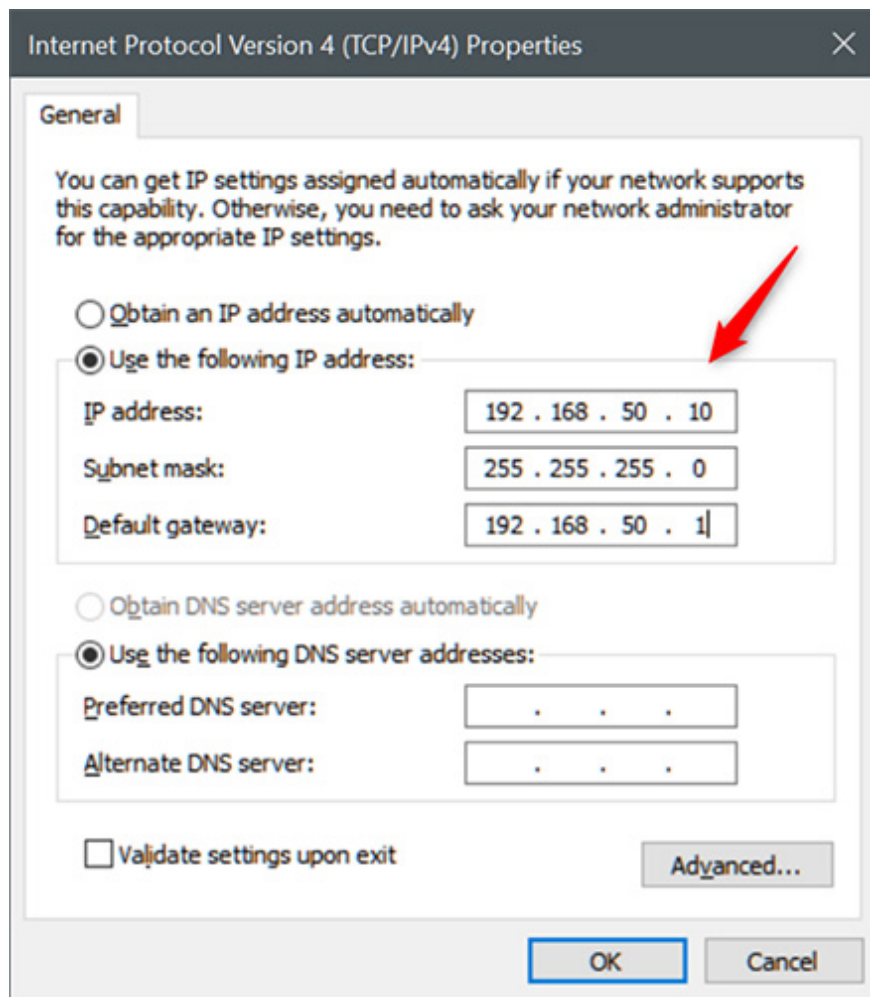
Step 5: Click **Properties**.



Step 6: The previous operation will open a window called **Internet Protocol Version 4 (TCP/IPv4) Properties** or **Internet Protocol Version 6 (TCP/IPv6) Properties**, depending on what you selected previously. Here's where you can change your IP address:

- If you want to use the dynamic IP address automatically assigned by the router to your Windows 10 PC, select **Obtain an IP address automatically**. Then, click **OK** and close all the windows you have open.

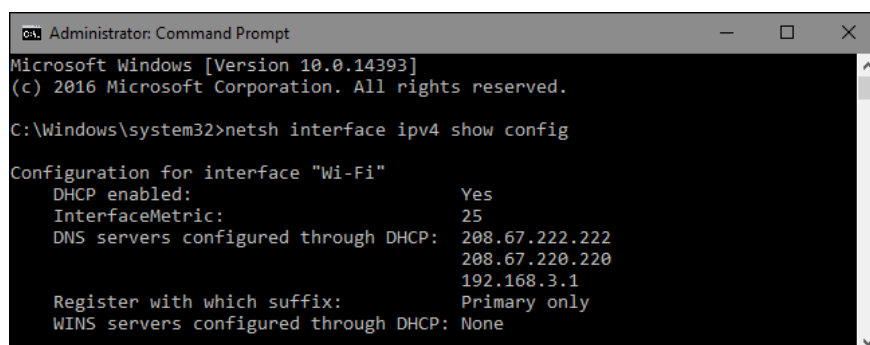
- If you want to set a static IP address for your network adapter, select **Use the following IP address**. Then, enter the required details manually: **IP address**, **Subnet mask** and **Default gateway**, just like in the previous section.



Step 7: Save the new IP address settings by clicking **OK** , then close all windows you opened during the process.

3. How to change IP address in Windows 10 using PowerShell or Command Prompt (cmd)

To change the IP address on your computer is not difficult, you can use Control Panel or Settings as mentioned above. However, you may not know that using Command Prompt can also change the IP address. In particular, using Command Prompt to change the IP address will be much faster than using Control Panel.



The netsh command allows you to configure some network connection settings on Windows operating systems. However, this process requires Command Prompt under Admin.

To open Command Prompt under Admin:

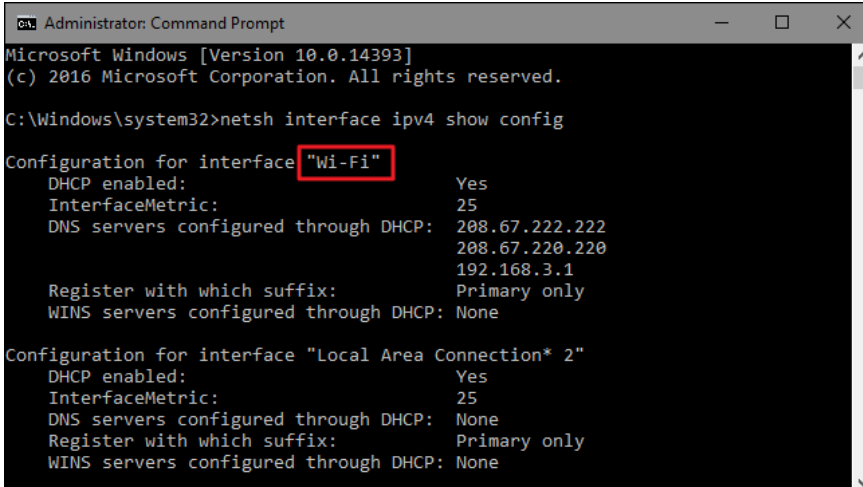
On Windows 10 or Windows 8.1, right-click the Start button on the Taskbar or press the **Windows + X** key combination to open the Power User Menu, where you click **Command Prompt (Admin)**.

On previous versions, you enter **command prompt** into the Search box on the Start Menu, then on the search results list, right-click **Command Prompt** and select **Run as Administrator**.

View network connection information

Before changing the IP address and related information, you need to find the full name of the network connection you want to change. To do this, use the command:

```
netsh interface ipv4 show config
```



```
Administrator: Command Prompt
Microsoft Windows [Version 10.0.14393]
(c) 2016 Microsoft Corporation. All rights reserved.

C:\Windows\system32>netsh interface ipv4 show config

Configuration for interface "Wi-Fi"
    DHCP enabled:                Yes
    InterfaceMetric:              25
    DNS servers configured through DHCP: 208.67.222.222
                                         208.67.220.220
                                         192.168.3.1
    Register with which suffix:    Primary only
    WINS servers configured through DHCP: None

Configuration for interface "Local Area Connection* 2"
    DHCP enabled:                Yes
    InterfaceMetric:              25
    DNS servers configured through DHCP: None
    Register with which suffix:    Primary only
    WINS servers configured through DHCP: None
```

Scroll down until you find the interface you want to find. In the example above, the Network Administrator edits the Wifi interface, so we proceed to find Wifi. You can also see other default names that Windows assigns to the interface, such as Local Area Connection, Local Area Connections* 2 and Ethernet.

Just find the exact network connection name and copy and paste it into Notepad to use in the next steps.

Change IP address, Subnet Mask and Default Gateway

To change **the IP address, Subnet Mask and Default Gateway** , use the command:

```
netsh interface ipv4 set address name="YOUR INTERFACE NAME" static IP_ADDRESS
SUBNET_MASK GATEWAY
```

Suppose you enter the command as:

```
netsh interface ipv4 set address name="Wi-Fi" static 192.168.3.8 255.255.255.0 192.168.3.1
```

In the command in the example above, replace the following information:

- Interface name is Wifi
- Set IP address to 192.168.3.1
- Set Subnet mask to 255.255.255.0
- Set Default Gateway to 192.168.3.1

And if you use a static IP address but you want to switch to using an IP address automatically assigned by a DHCP server, such as a router, you can use the command below:

```
netsh interface ip4 set address name='YOUR INTERFACE NAME' source=dhcp
```

Change DNS Settings

Additionally, you can use the **netsh** command to change DNS servers. Third-party DNS Server applications such as Google Public DNS and OpenDNS can support faster and more reliable DNS servers provided by ISPs.

Whatever your purpose of changing DNS server is, you can do it on the router. If you want to change a computer's DNS server, you can easily do it with the netsh command.

You will have to use 2 commands: one command is to set up **the primary DNS server** and one command is to set up **the secondary DNS server** or **backup DNS server** .

To set up **primary DNS server** , use the command:

```
netsh interface ipv4 set dns name="YOUR INTERFACE NAME" static DNS_SERVER
```

Suppose if you set up Google's primary public DNS server, 8.8.8.8, you use the command:

```
netsh interface ipv4 set dns name="Wi-Fi" static 8.8.8.8
```

To set up **Secondary DNS Server** , use the command:

```
netsh interface ipv4 set dns name="YOUR INTERFACE NAME" static DNS_SERVER index=2
```

Suppose if you want to set the secondary DNS of Google Public DNS secondary server to 8.8.4.4, use the command:

```
netsh interface ipv4 set dns name="Wi-Fi" static 8.8.4.4 index=2
```

With the IP address, you can change it to set up automatic DNS. Use command:

```
netsh interface ipv4 set dnsservers name"YOUR INTERFACE NAME" source=dhcp
```

Refer to some more articles below:

Good luck!

You finished reading the article "**3 ways to change IP address in Windows 10**" edited by the [TipsMake](#) team. We hope this article has provided you with many useful tech tips and tricks. You can search for similar articles on tips and guides. Thank you for reading and for following us regularly.
