

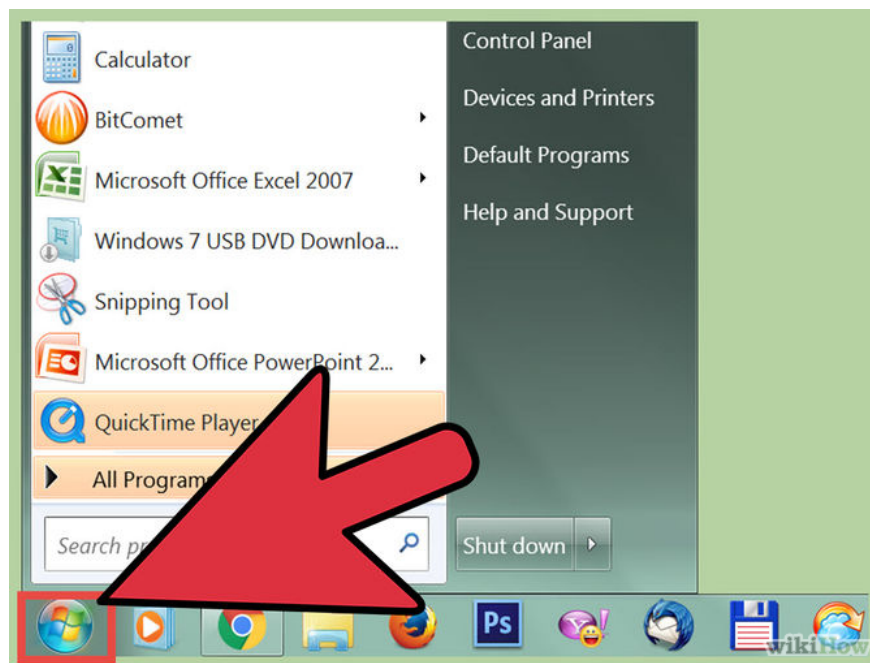
3 simple ways to install additional audio devices on your computer

You can connect and install audio devices like music mixers, audio recorders and speakers via wireless standards. However, some devices work via Bluetooth.

Computers and laptops use sound cards - sound cards to connect audio devices such as music mixers, recorders, and speakers. You can connect and install those devices via wireless standards. However, some devices work via Bluetooth standard (requires distance of operation near the computer)

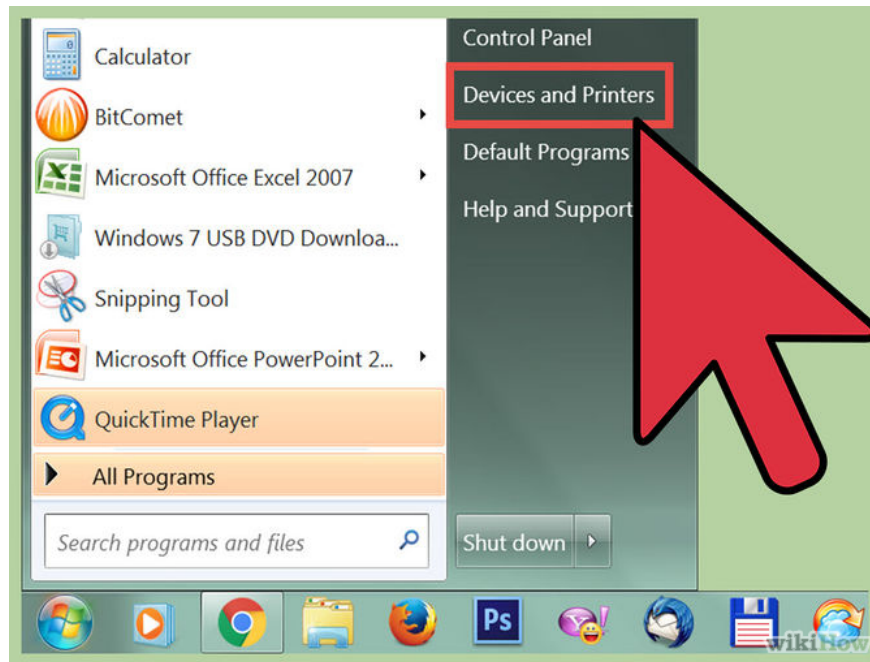
Method 1: Connect to Bluetooth

Step 1: Go to Start Menu



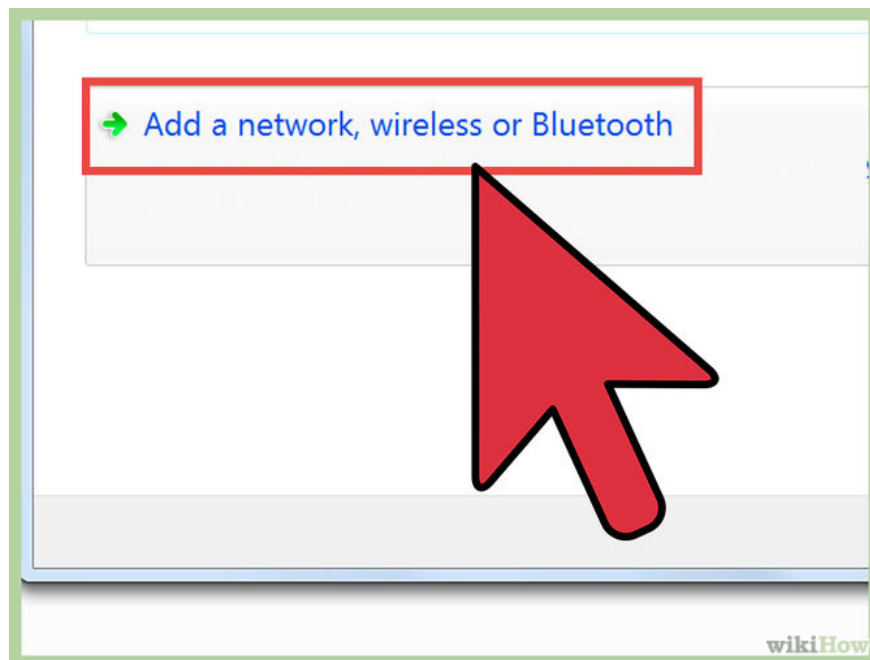
Move the mouse and click **Start Menu** at the bottom left corner of **Desktop** . Click on the **Settings** option on the right hand side.

Step 2: Click on "Devices"



This is the second option in the menu. Below you will find a selection list "Bluetooth, Printers (printer), Mouse (mouse)".

Step 3: On the left hand side Menu select "Bluetooth"



Click and then turn on **Bluetooth** on your computer by clicking the button next to the "Off" button . If available, you can skip this step.

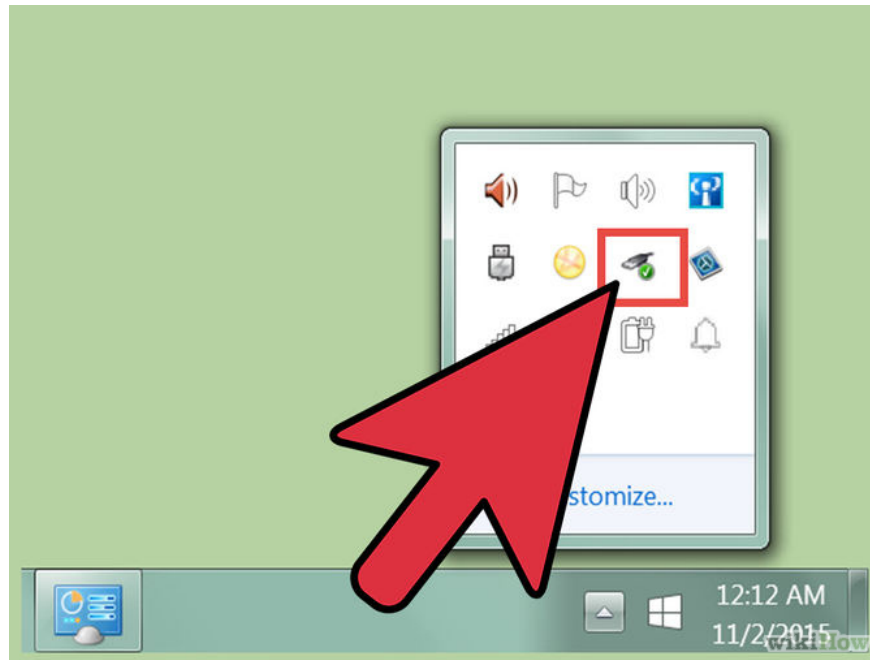
Step 4: Wait until the device is detected

If your device is opened and within range, it will appear on the screen. Simply click to activate **Bluetooth** .

If your computer has trouble detecting the device, turn off **Bluetooth** on the device and then turn it back on.

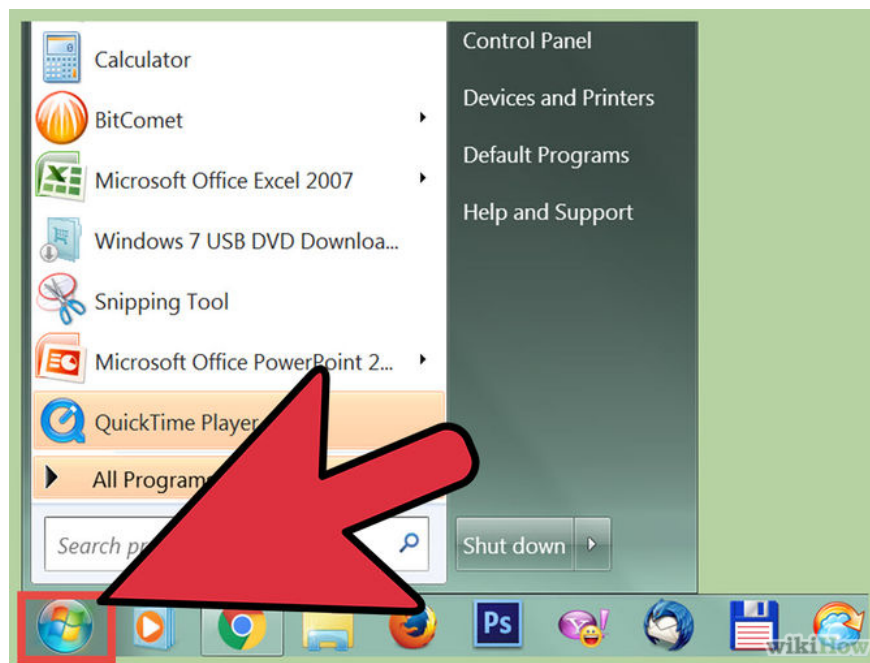
Method 2: Install additional audio devices without Bluetooth

Step 1: Open your devices



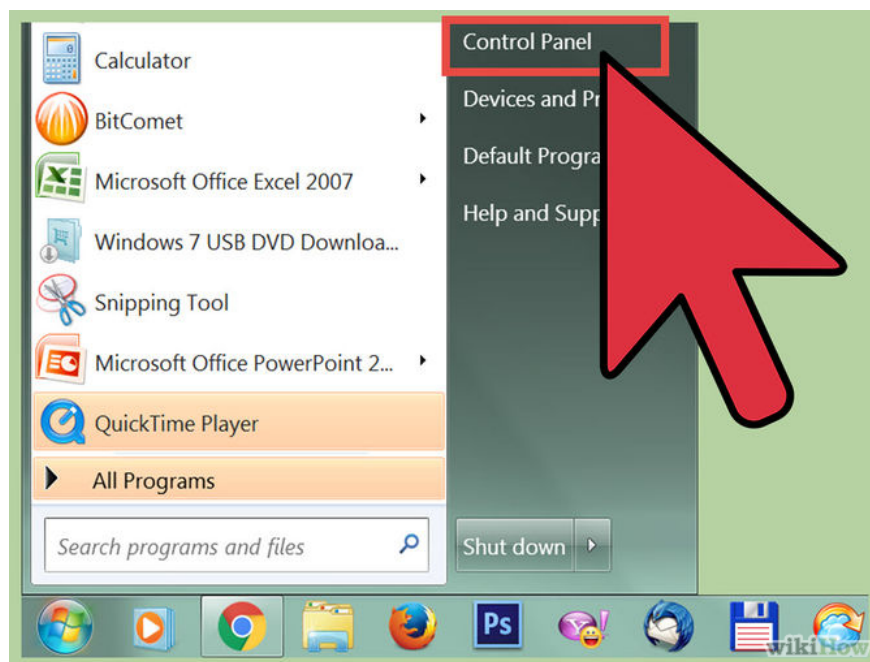
Open your devices so that these devices will display on the new Menu. You need to use a **USB port** directly connected to the computer or an audio cable plugged directly into the headphone jack.

Step 2: Go to Start Menu



Click on the **Start Menu** at the bottom left of your **Desktop** screen. This is the Browser Menu that allows you to open any application on your computer.

Step 3: Select Control Panel

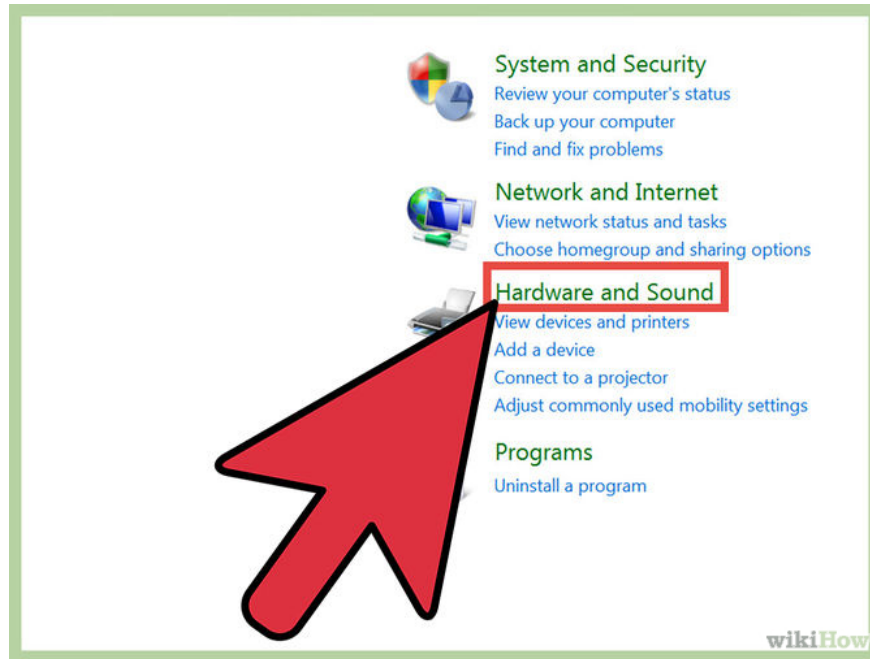


Go to Start Menu , then select **Control Panel** . With **Windows 8**, **Control Panel** is located above the right corner of the screen. For **Windows 10** , **Control Panel** is a green square on the **Desktop** screen.

If unfortunately you turn off the **Control Panel** window on the computer screen, you can click on the **Settings menu** on the **Start Menu** .

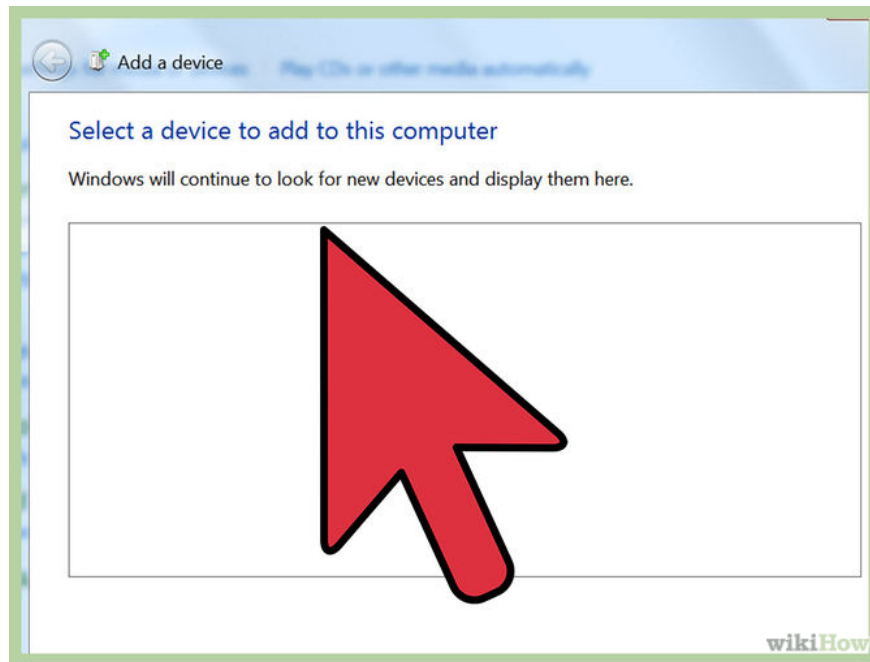
Go to the **Setting Menu** , click "**Devices** ". This is the second option in the **Menu** . The next step is to select "**Connected devices**" on the left side of your screen. Finally, scroll down and click on '**Devices and printers**' . If you find the device following these steps, skip the next steps.

Step 4: Select "Hardware and Sound"



In the **Menu** item that you just opened, the "**Hardware and Sound**" option appears . On the side is the printer icon and the speaker (Speaker).

Step 5: Click on "Add a device"



"**Add a device**" is the blue text on the upper left corner of the **Menu** . When you click here, a new screen will appear. This screen will display all the devices found in your computer after it has been scanned.

If you can't find any devices, try turning them off and then on again. Then scan again. In other words, do whatever it takes to get your device "detected".

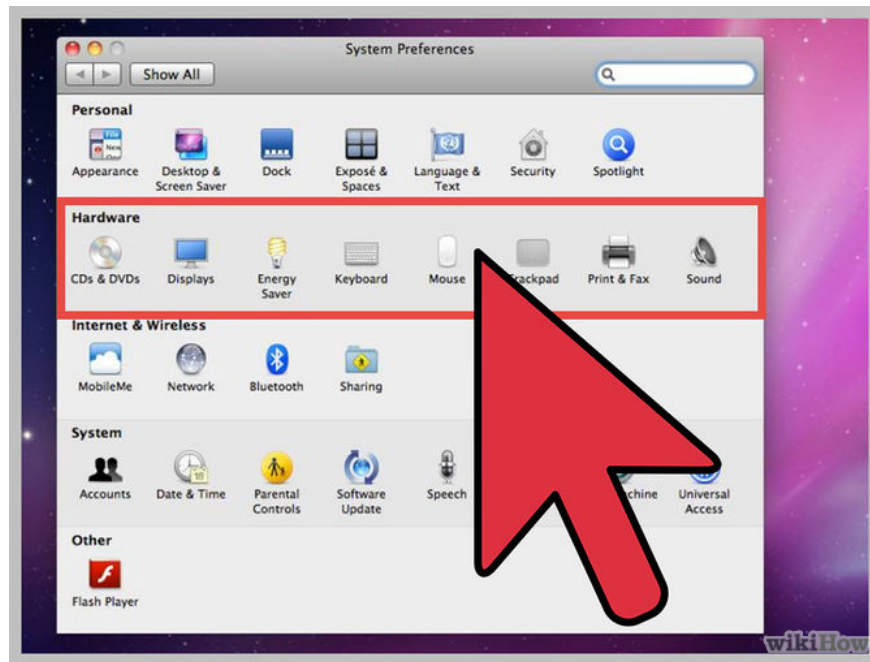
Step 6: Enter the WPS PIN code

A window will appear asking for a PIN. If you do not enter a PIN, you will not be able to follow the next steps. This PIN is the accompanying information when you purchase the device. Usually PINs usually include letters and numbers to make it difficult for strangers to detect. However, some audio devices do not require this PIN. After you have entered the PIN code, your device will connect to the computer.

If in case your computer has no sound, please refer to this article

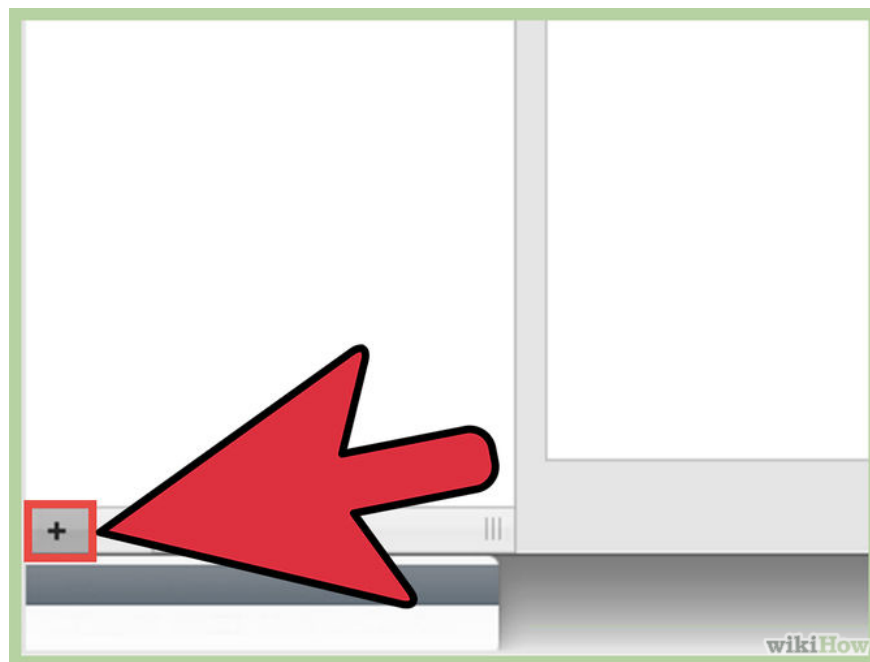
Method 3: For Mac operating system

Step 1: Open the AudioMIDI application installation



To do this step, move the mouse to the **Menu** . This is the 5th option above the right corner of the toolbar. When the application is finished, scroll down to '**Utilities**' . This is the 10th option. Once the **menu** is done, two list tables will appear. **AudioMIDI** will appear on the left hand side.

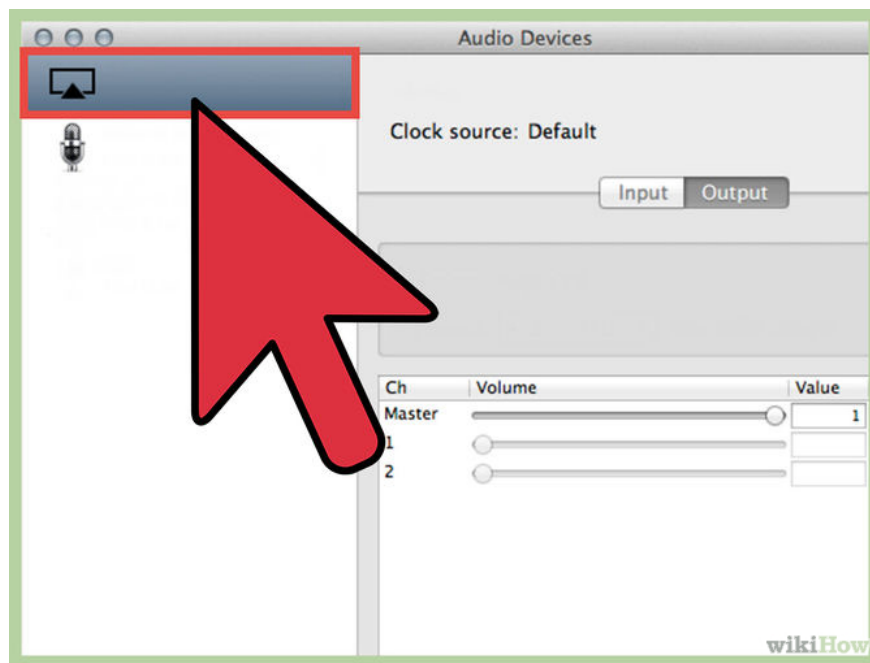
Step 2: Click on (+)



This is the **Add** button. On the screen you can see it is located in the lower left corner of **Audio Devices** . After Click, a new **Menu** will appear. On this **menu** , there are 2 options to choose from. You click on the first option, '**Create Aggregate Device**' .

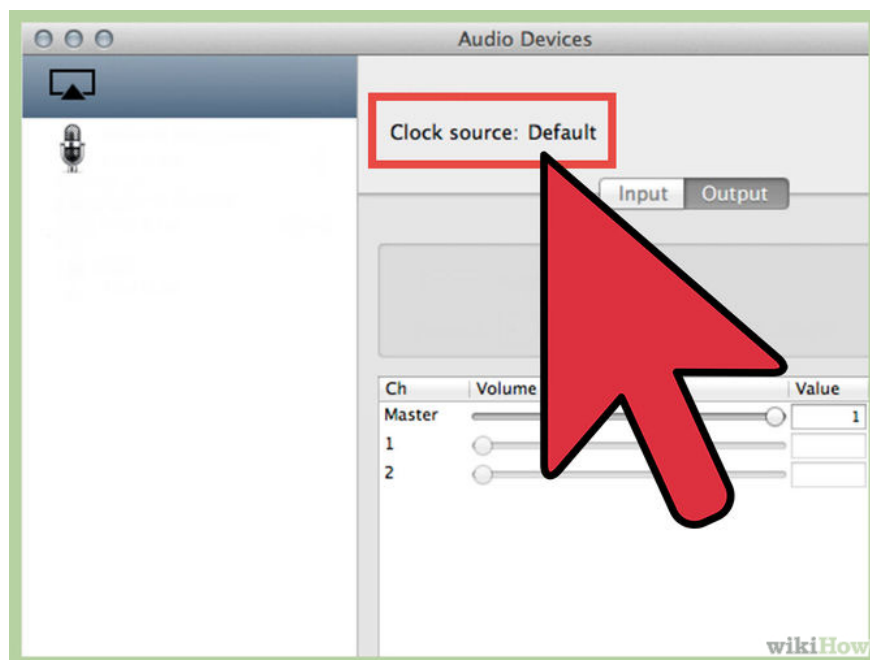
General devices including virtual audio interface work with your system. These devices help you connect the input and output elements of one or several audio tools connected to your Macbook.

Step 3: Click on your device



The new synthetic device will appear on the left side of the screen when you click to select this option. If you want to change the name, you can simply double-click it, it will allow you to edit the name.

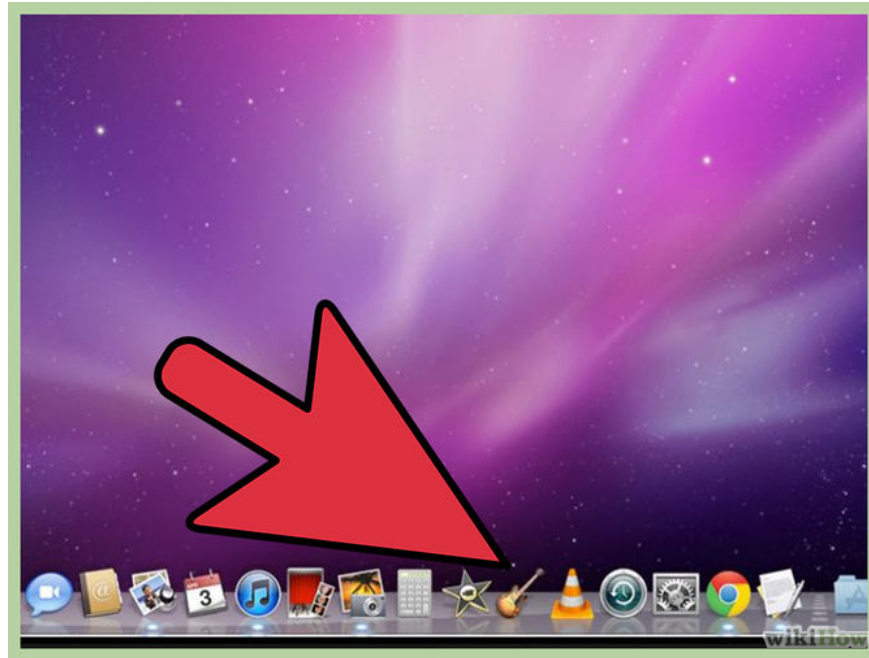
Step 4: Activate the 'Use' feature (use)



For newly selected devices and set the correct name, after being activated, check the **Use** feature. This option is located in the left corner of your window.

Check multiple boxes if you want to activate multiple synthetic devices. The order of the devices you just checked is the order of input and output devices in your **Menu** application.

Step 5: Connect Clock



Set the clock for your synthetic devices to save the time the programs work. At the top of the screen you will see an '**Clock Source**' option . Click on that option if you want to set an overall clock for the device. If you want to know how each device works, you can set each clock for your own devices.

Step 6: Use the device

After you have completed the steps, go back to the **Audio MIDI** folder and press the right mouse button (**or Ctrl + click**) on the device you want to use. A new Menu will be turned on and you can choose to use this device for input or output.

You finished reading the article "**3 simple ways to install additional audio devices on your computer**" edited by the [TipsMake](#) team. We hope this article has provided you with many useful tech tips and tricks. You can search for similar articles on tips and guides. Thank you for reading and for following us regularly.