

3 Most Favorite Features in Photoshop 2025

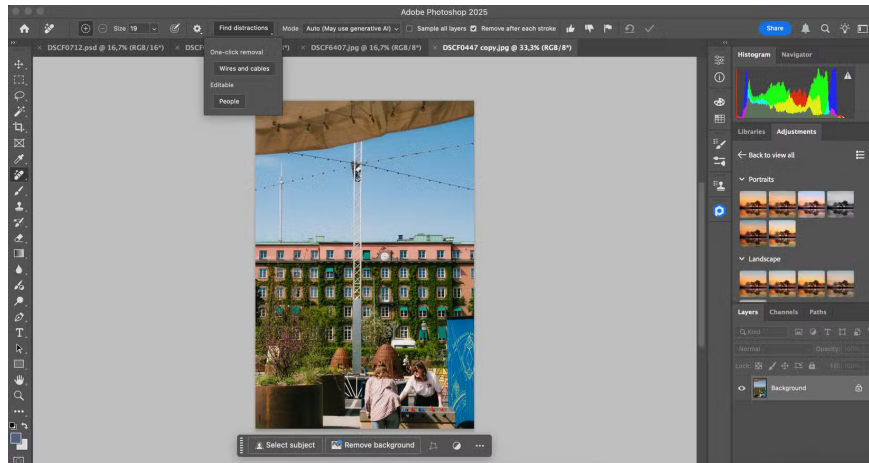
Photoshop 2025 packs new AI tools, smarter selections, and features you didn't know you needed until now.

Adobe Photoshop introduced a lot of new features with version 2025, but there are a few that stand out. Photoshop 2025 integrates new AI tools, smarter selections, and features you didn't know you needed until now.

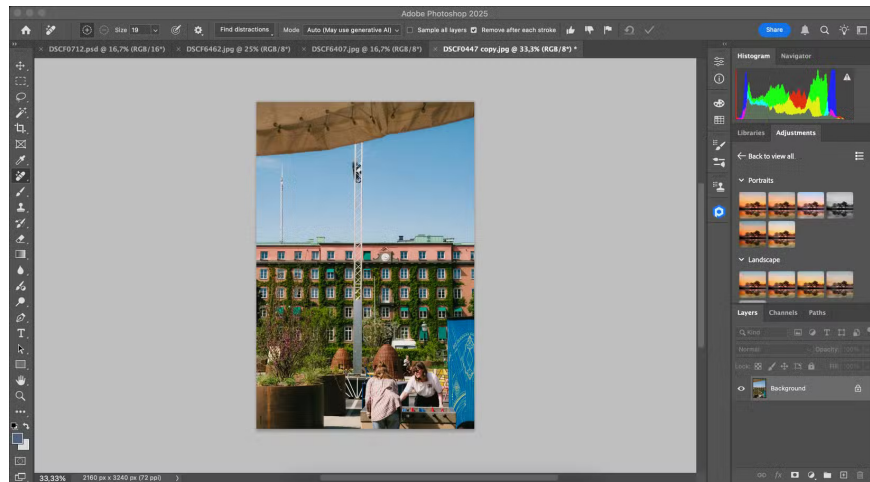
1. One-click deletion

You could already do a lot of Photoshop editing tricks before 2025. However, its one-click eraser tool makes things simpler.

After clicking **Find Distractions**, you can remove cables and wires from your photo. This feature is especially useful if you take a lot of urban photos. While these objects can be cropped out, they can sometimes obscure the main subject.



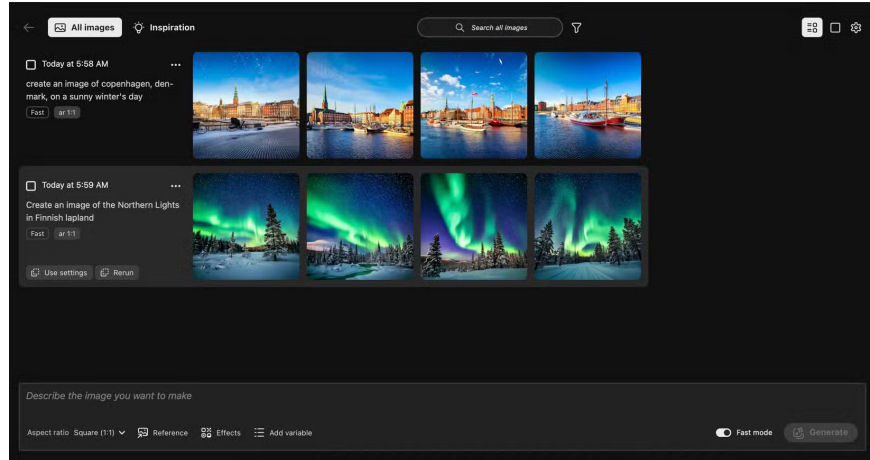
This tool is generally reliable, although sometimes you can see evidence of a wire or cable that was previously present. For example, some parts of the photo will sometimes be darker.



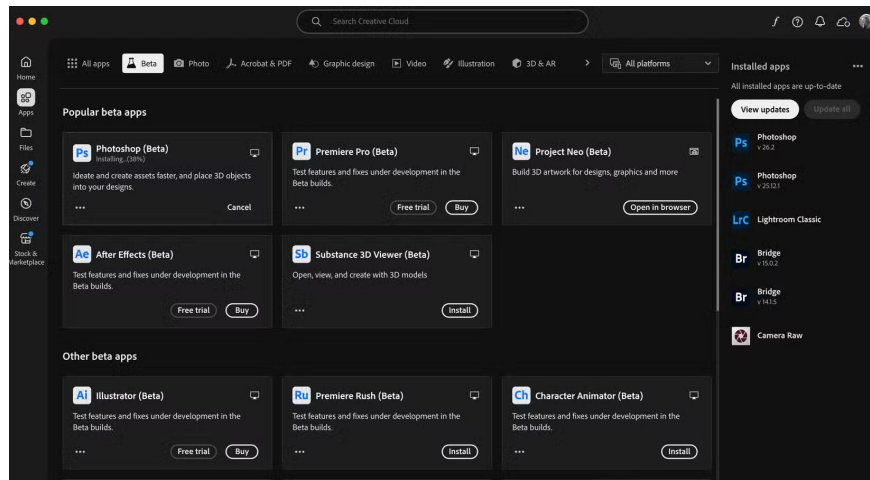
2. Generative Workspace

Adobe's AI tools are some of the best available to creatives. The company announced a number of AI features at Adobe MAX 2024, including the Generative Workspace, where you can see all the images you've created using AI in Adobe software.

Many people use the Generative Workspace to get ideas for upcoming photo shoots. The workspace allows you to add effects to your images to make them more realistic and add other elements directly in Photoshop.

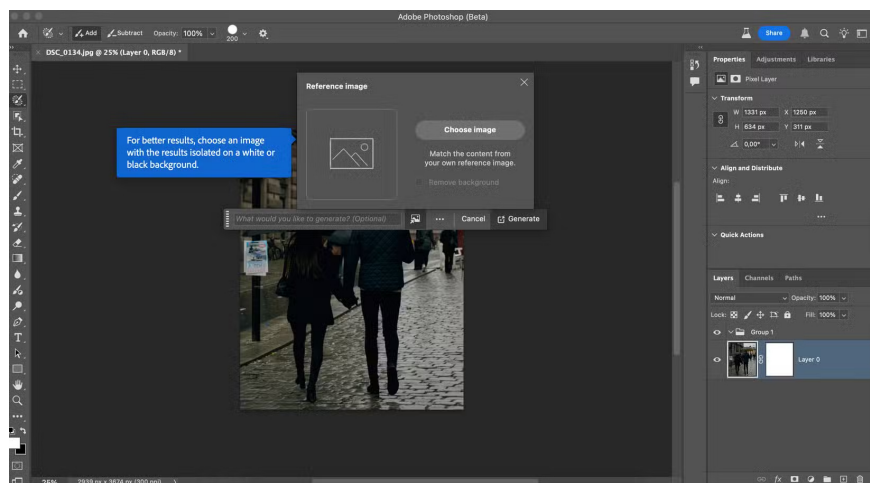


As of January 2025, you'll need a beta version of Photoshop to access the Generative Workspace. Go to the Creative Cloud app and select **Apps > Beta > Photoshop (Beta)** .



3. Reference image

While Generative Fill can improve images (when used correctly), it has also had some bad results. You often get the worst results when you're not specific enough; with the Reference Image tool, using Photoshop's Generative Fill has become easier.



Once you've selected the location in your photo you want to replace, you can upload a reference image. Now, when you type in the prompt, you'll get more accurate results. As of January 2025, this feature—like the Generative Workspace—is currently only available in Photoshop Beta.

New Photoshop features make photo editing easier. Removing distracting elements is great for cleaner edits, and you can now get more specific Generative Fill prompts. Meanwhile, the Generative Workspace is great for keeping your ideas together.

You finished reading the article "**3 Most Favorite Features in Photoshop 2025**" edited by the [TipsMake](#) team. We hope this article has provided you with many useful tech tips and tricks. You can search for similar articles on tips and guides. Thank you for reading and for following us regularly.