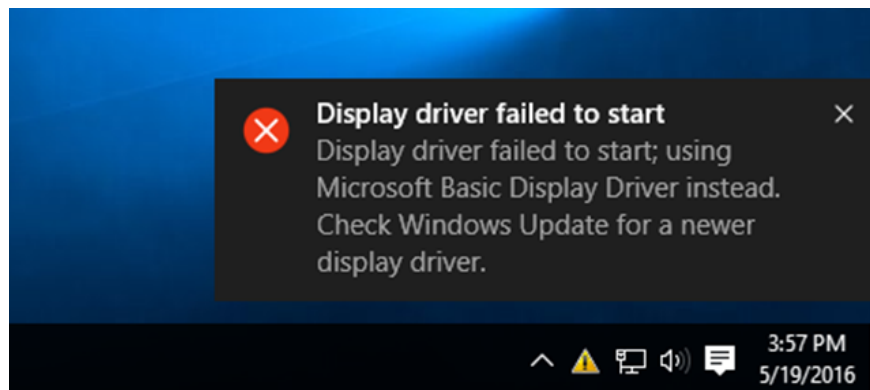


2 ways to fix Display Driver Failed To Start error on Windows 10

Learn how to fix the error when the display driver fails to start; Using Microsoft Basic Display Driver instead. Check Windows Update for a new display driver appears when the graphics card driver fails.

Error " *Display driver failed to start. Use the Microsoft Basic Display Driver instead. Check when Windows Update for a new display driver* " appears when the graphics card driver fails.

If you see this error only once, you can skip and continue using Windows 10. However, if you see this error occurs frequently, then you must find a way to fix the error.

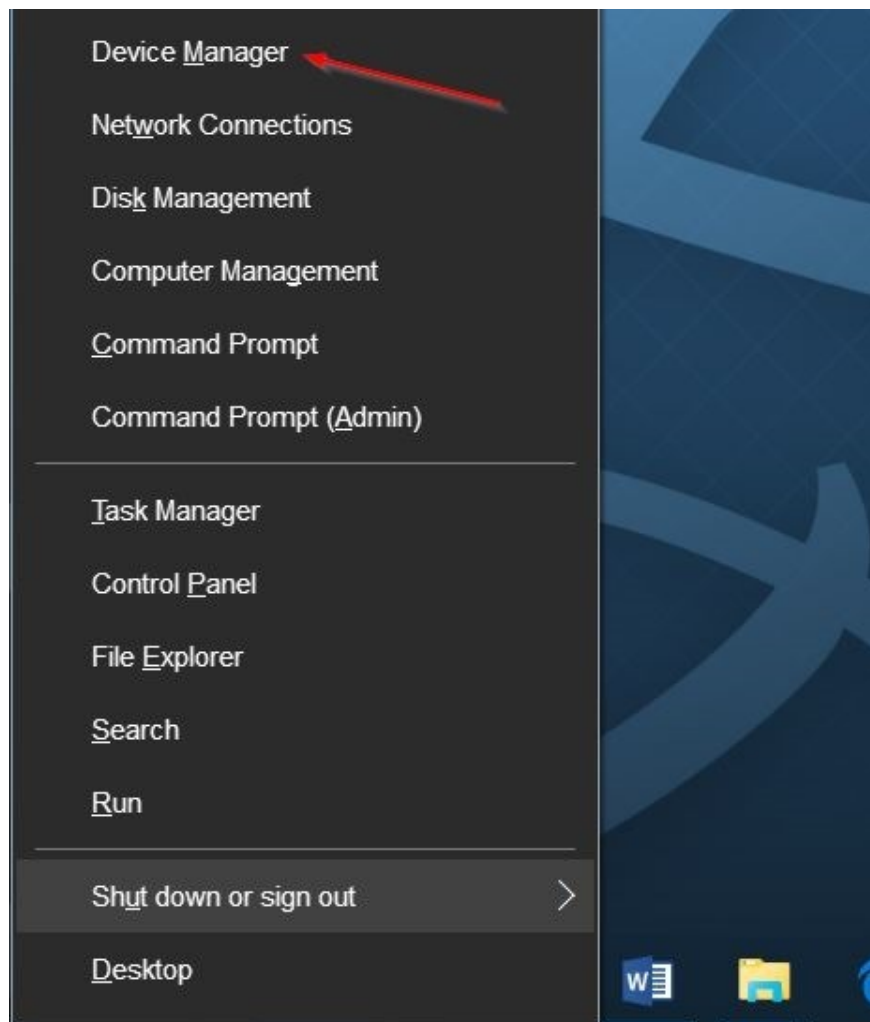


1. Update Display driver on Windows 10

See more: [5 basic ways to update, update drivers for computers](#)

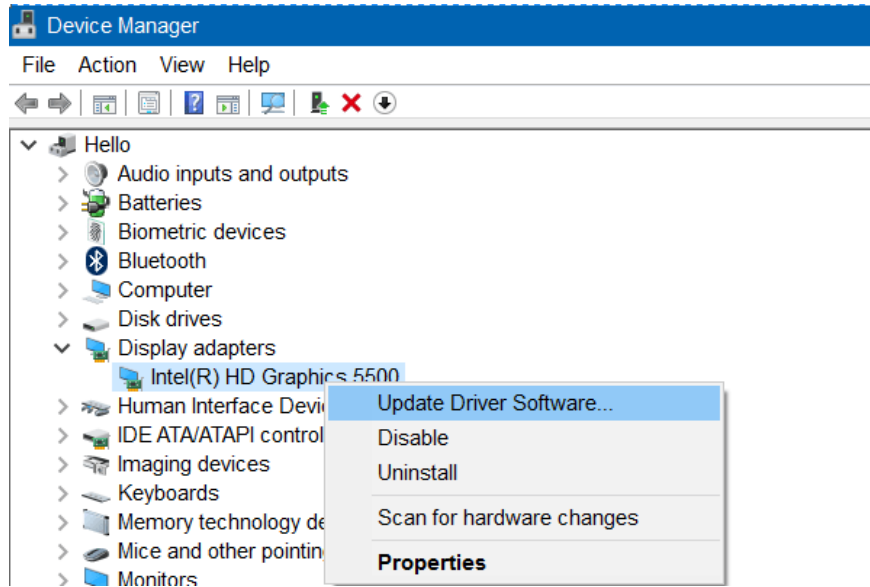
Step 1:

Open Device Manager by right-clicking on **Start Menu** and then clicking **Device Manager**.



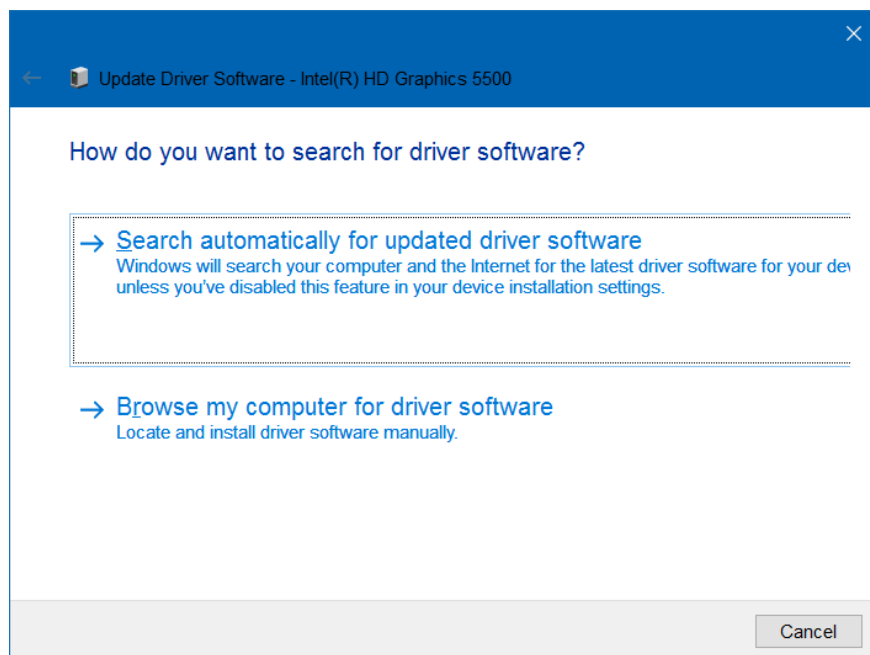
Step 2:

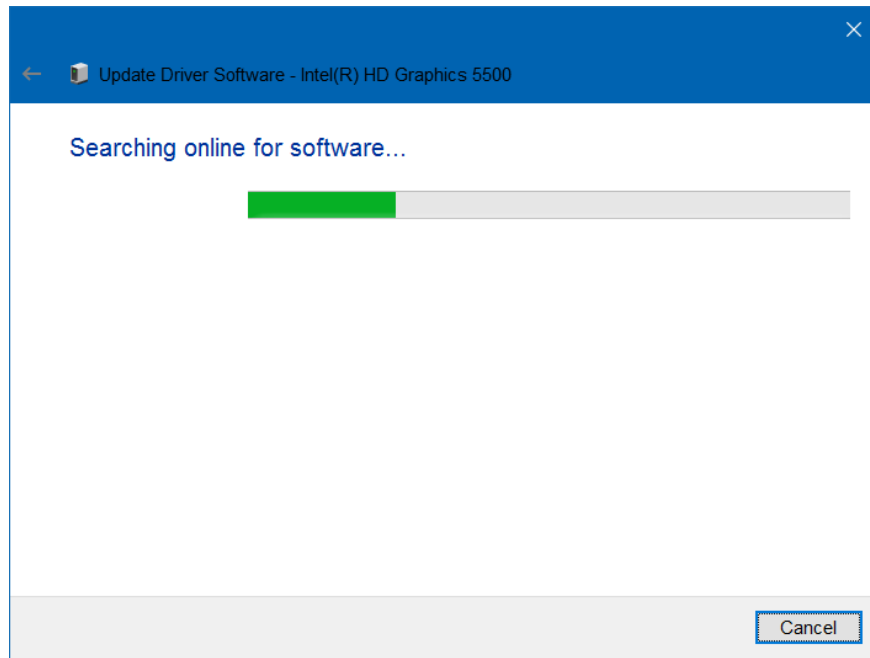
On the Device Manager window, expand the **Display Adapters** section and right-click the graphics card name and then click **Update Driver Software** to open the Update Software Wizard.



Step 3:

On the Update Software Wizard window, click the **Search automatically for updated driver software option** so that Windows 10 automatically searches, updates drivers and settings, if available.





After the installation process finishes, on the screen you will see a **Windows** message that **has successfully updated your driver software**.

If the updated version is not available you will see the message **No updates were found**.

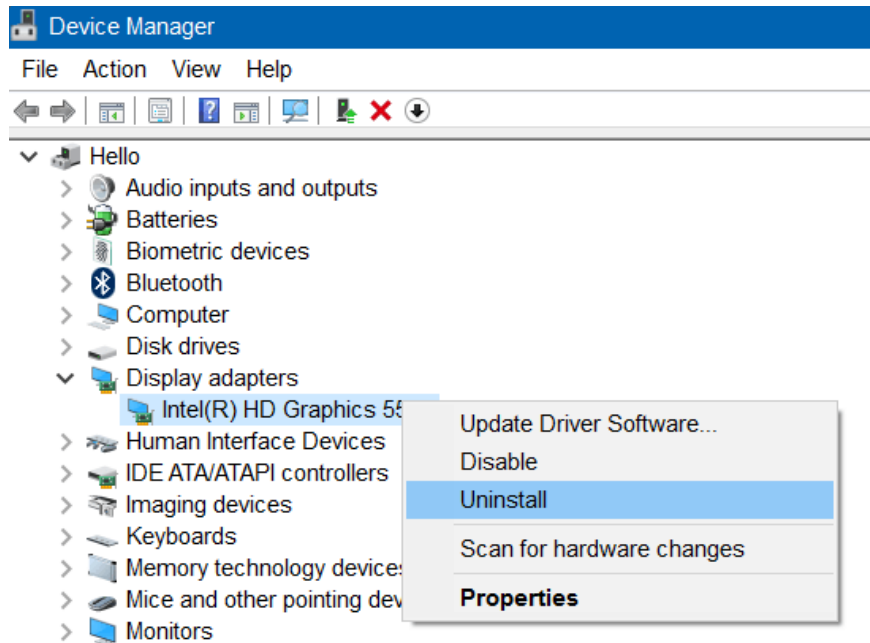
2. Reinstall the Display driver on Windows 10

If an updated version of the Display driver is not available, you can reinstall the Display driver.

Step 1:

Open Device Manager by right-clicking on **Start Menu** and then clicking **Device Manager**.

Then expand **Display Adapters** , right-click the graphics card name, then click **Uninstall** .



Step 2:

Click **OK** if the dialog box asking for confirmation is displayed.

If required to restart, restart your computer to complete the uninstall process.

Step 3:

Download the latest version of Display driver to your computer and follow the on-screen instructions to install the driver.

Refer to some of the following articles:

1. Activate Credential Guard to enhance Windows 10 security
1. Clear the Windows 10 Update Cache to free up memory space
1. Windows 10 system tray icon error, this is a fix

Good luck!

You finished reading the article "**2 ways to fix Display Driver Failed To Start error on Windows 10**" edited by the [TipsMake](#) team. We hope this article has provided you with many useful tech tips and tricks. You can search for similar articles on tips and guides. Thank you for reading and for following us regularly.