

2 steps to change Linksys wifi password

If you find that your home Wi-Fi connection is slowing down recently, even if the charges are increasing for unknown reasons, then it is possible that your home Wi-Fi network has been stolen. The only solution is to quickly change your Wifi password. In the article below, we will guide you to change Linksys wifi password. Please consult.

If you unfortunately feel that the Wi-Fi connection in your home has recently been significantly slowed down, even if the charge is increased for unknown reasons, it is possible that your home Wi-Fi network has been "stolen". The only solution is to quickly change your Wifi password. In the article below, we will guide you to change Linksys wifi password. Please consult.

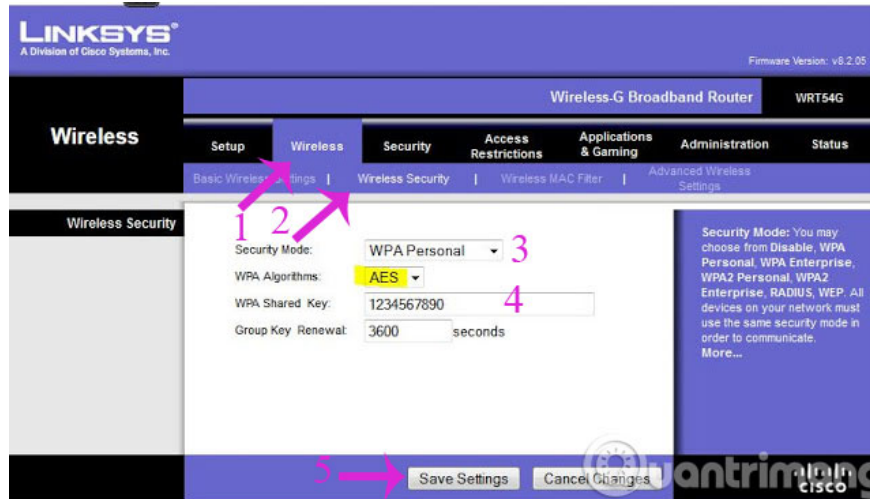
Step 1:

Visit the **Linksys** router administration page (default is **192.168.1.1**) and log in with **User** , **Password** as **admin**



Step 2:

Here, click **Wireless** > **Wireless Security** . Then, choose **WEP** or **WPA** security mode and enter the new password and then click **Save Settings** to save.



1. Instructions for installing Wifi Router Tenda W311R
2. Instructions for configuring Bullet M2HP Wifi router
3. Instructions for fixing Wifi errors with yellow exclamation

I wish you a happy new day!

You finished reading the article "**2 steps to change Linksys wifi password**" edited by the [TipsMake](#) team. We hope this article has provided you with many useful tech tips and tricks. You can search for similar articles on tips and guides. Thank you for reading and for following us regularly.